

4A0-101^{Q&As}

Alcatel-Lucent Interior Routing Protocols and High Availability

Pass Alcatel-Lucent 4A0-101 Exam with 100% Guarantee

Free Download Real Questions & Answers **PDF** and **VCE** file from:

<https://www.pass2lead.com/4a0-101.html>

100% Passing Guarantee
100% Money Back Assurance

Following Questions and Answers are all new published by Alcatel-Lucent Official Exam Center

- ⚙️ **Instant Download** After Purchase
- ⚙️ **100% Money Back** Guarantee
- ⚙️ **365 Days** Free Update
- ⚙️ **800,000+** Satisfied Customers



QUESTION 1

What is the default preference value for a static route in the Alcatel-Lucent 7750 SR router?

- A. 0
- B. 5
- C. 10
- D. 15

Correct Answer: B

QUESTION 2

A static route is created using the command "static-route 2.3.4.0/24 next-hop 1.2.3.4". What is the correct traceroute command to test this static route on an Alcatel-Lucent 7750 SR?

- A. traceroute 2.3.4.1
- B. traceroute 2.3.4.0/24 next-hop 1.2.3.4
- C. traceroute next-hop 1.2.3.4
- D. traceroute does not work on the Alcatel-Lucent 7750 SR

Correct Answer: A

QUESTION 3

Which component of the Alcatel-Lucent 7750 SR is in charge of performing the longest prefix match lookup on packets that arrive on the physical interfaces?

- A. CPM
- B. MDA
- C. Switch Fabric
- D. IOM

Correct Answer: D

QUESTION 4

What are the default Hello and Dead timer intervals for OSPF on the Alcatel-Lucent 7750 SR?

- A. 5 and 15 seconds

- B. 10 and 30 seconds
- C. 5 and 20 seconds
- D. 10 and 40 seconds

Correct Answer: D

QUESTION 5

A router is configured with the command "configure router ecmp 4". There are two best paths to a given destination with an equal cost in the IGP. Which of the following best describes the handling of traffic to this destination?

- A. The router installs two routes for the destination with two different next hops. A hashing algorithm is used to distribute traffic over the two paths.
- B. The router installs two routes for the destination with two different next hops. Traffic is evenly distributed over the two paths.
- C. The router installs four routes for the destination with four different next hops. A hashing algorithm is used to distribute traffic over the four paths.
- D. The router installs four routes for the destination with four different next hops. Traffic is evenly distributed over the four paths.
- E. The router installs one route for the destination. Traffic is evenly distributed over the two paths.

Correct Answer: A

QUESTION 6

An Alcatel-Lucent 7750 SR has a port with the MAC address of 00:03:FA:AC:77: AF. The port is bound to an interface. If IPv6 is then enabled on that interface .what will the link-local address be?

- A. FE80::203:FAFF:FEAC:77AF/64
- B. 2000::203:FAFFFEAC:77AF/64
- C. FE80::3FAFF:FEAC:77AF/64
- D. FC00::203:FAFF:FEAC:77AF/64
- E. FC00::3:FAFF:FEAC:77AF/64

Correct Answer: A

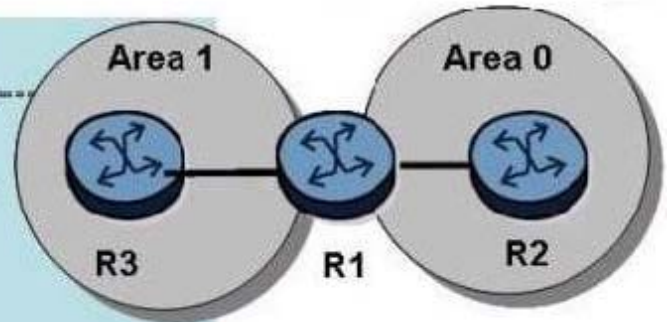
QUESTION 7

Click the exhibit button.

Exhibit 4.6.g

```
*A:R3>config>router>ospf# show router route-table
Route Table (Router: Base)
-----
Dest Prefix          Type  Proto Age      Pref
Next Hop[Interface Name]      Metric
0.0.0.0/0            Remote OSPF 00h00m23s 10
10.1.3.1             Local Local 05d10h00m 0
10.1.3.0/27         toR1
                    Local Local 0
10.10.10.3/32       Local Local 0144d08h 0
system              Local Local 0
No. of Routes: 3

*A:R2# show router route-table 192.168.0.0/16 longer
Route Table (Router: Base)
-----
Dest Prefix          Type  Proto Age      Pref
Next Hop[Interface Name]      Metric
192.168.1.0/24      Local Local 01h09m41s 0
loop1               Local Local 0
192.168.2.0/24      Local Local 01h09m41s 0
loop2               Local Local 0
192.168.3.0/24      Local Local 01h09m40s 0
loop3               Local Local 0
192.168.4.0/24      Local Local 01h09m40s 0
loop4               Local Local 0
No. of Routes: 4
```



Given the topology and the show commands, and assuming that router R2 advertises all of its loopbacks into OSPF, what is the correct router R1 configuration?

```
A. *A:R1>config>router>ospf# info
-----
area 0.0.0.0
 interface "toR2"
   interface-type point-to-point
 exit
exit
area 0.0.0.1
 nssa
  originate-default-route
  no summaries
 exit
 interface "toR3"
   interface-type point-to-point
 exit
exit
-----
*A:R1>config>router>ospf#

B. *A:R1>config>router>ospf# info
-----
area 0.0.0.0
 interface "toR2"
   interface-type point-to-point
 exit
exit
area 0.0.0.1
 nssa
  originate-default-route
 exit
 interface "toR3"
   interface-type point-to-point
 exit
exit
-----
*A:R1>config>router>ospf#

C. *A:R1>config>router>ospf# info
-----
area 0.0.0.0
 interface "toR2"
   interface-type point-to-point
 exit
exit
area 0.0.0.1
 area-range 192.168.0.0/16 advertise
 interface "toR3"
   interface-type point-to-point
 exit
exit
-----
*A:R1>config>router>ospf#

D. *A:R1>config>router>ospf# info
-----
area 0.0.0.0
 area-range 192.168.0.0/16 advertise
 interface "toR2"
   interface-type point-to-point
 exit
exit
area 0.0.0.1
 interface "toR3"
   interface-type point-to-point
 exit
exit
-----
*A:R1>config>router>ospf#
```

A. Option A

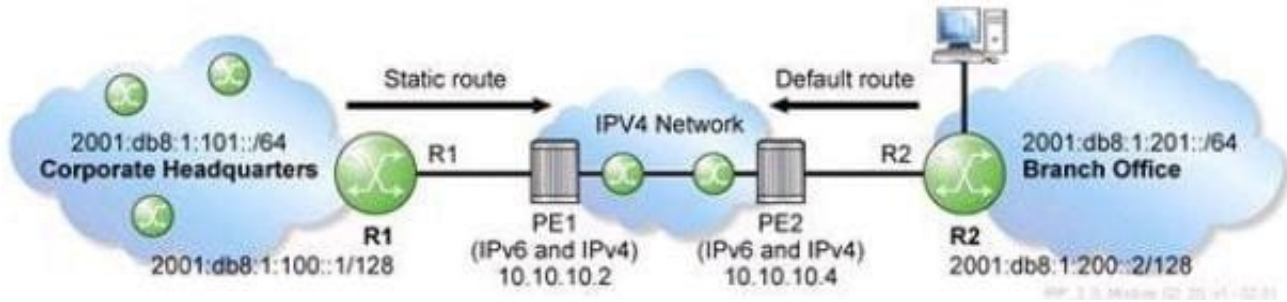
B. Option B

C. Option C

D. Option D

Correct Answer: A

QUESTION 8



A service provider is deploying a 6over4 tunnel to connect a customer's branch office IPv6 network to the corporate headquarters as shown in the exhibit. Which command is used to create a default route on PE2 for the branch office network?

- A. configure router static-route 0.0.0.0/0 indirect 10.10.10.2
- B. configure router static-route 0.0.0.0/0 indirect 2001:DB8:1:100::1
- C. configure router static-route ::/0 indirect 10.10.10.2
- D. configure router static-route ::/0 indirect 2001:DB8:1:100::1
- E. configure outer static-route ::/0 indirect 2001:DB8:1:101::1

Correct Answer: C

QUESTION 9

Which of the following are major features of OSPF? (Choose 2.)

- A. Fast reroute capability.
- B. Control traffic prioritization.
- C. Route redistribution.
- D. Traffic engineering extensions.
- E. Cut through forwarding.

Correct Answer: CD

QUESTION 10

There is an IP host with IP address 10.2.3.1. A static route is created, using the "configure router static-route 10.2.3.0/24 next-hop 10.1.2.1" command. What is the correct traceroute command to test this static route on an Alcatel-Lucent 7750 SR?

- A. traceroute 10.2.3.1
- B. traceroute 10.2.3.1 next-hop 10.1.2.1

- C. traceroute next-hop 10.1.2.1
- D. traceroute does not work on the Alcatel-Lucent 7750 SR.
- E. traceroute 10.1.2.1

Correct Answer: A

QUESTION 11

A router receives an OSPF database description packet from a neighbor that references an LSA, which is already in the router's LSDB. The sequence number in the DBD packet is lower than the sequence number of the LSA in the LSDB.

What action does the router take?

- A. The router sends a link-state update to its neighbor.
- B. The router sends a link-state acknowledgement to its neighbor.
- C. The router updates the information in its LSDB with the information received from its neighbor.
- D. The router sends a link-state request to its neighbor.
- E. The router takes no action.

Correct Answer: A

QUESTION 12

In an IS-IS network, why does the DIS create a pseudo-node?

- A. It represents a group of routers on the same non-broadcast network.
- B. It represents the topological database of the backbone network in an IS-IS network.
- C. It represents a broadcast sub-network.
- D. It represents the complete topology of an IS-IS area.

Correct Answer: C

QUESTION 13

What is the replacement for ARP in IPv6?

- A. The use of Broadcast messages in combination with Neighbor Advertisement messages.
- B. The use of Anycast addresses in combination with Neighbor Advertisement messages.
- C. The use of Solicited-node multicast addresses in combination with Neighbor Advertisement messages.

D. The use of Anycast addresses in combination with Link-Local Advertisement messages.

Correct Answer: C

QUESTION 14

An Alcatel-Lucent 7750 SR receives a route via an IS-IS LSP with internal reach ability, and receives the same route via an OSPF type 5 LSA. If all protocol preferences are default, which route will be installed in the route table?

- A. The route learned via IS-IS will be installed.
- B. The route learned via the OSPF type 5 LSA will be installed.
- C. Both routes will be installed, if ECMP is enabled.
- D. Both routes will be installed, regardless of whether ECMP is enabled.

Correct Answer: A

QUESTION 15

What acts as the tie breaker on an Alcatel-Lucent 7750 SR if the priorities are the same when IS- IS is electing a DIS?

- A. The system ID
- B. The loopback address
- C. The sequence number of the hello packet
- D. The device that first initiated communication becomes the DIS

Correct Answer: A

[4A0-101 PDF Dumps](#)

[4A0-101 VCE Dumps](#)

[4A0-101 Study Guide](#)