

# 4A0-104<sup>Q&As</sup>

Alcatel-Lucent Services Architecture

## Pass Alcatel-Lucent 4A0-104 Exam with 100% Guarantee

Free Download Real Questions & Answers **PDF** and **VCE** file from:

<https://www.pass2lead.com/4a0-104.html>

100% Passing Guarantee  
100% Money Back Assurance

Following Questions and Answers are all new published by Alcatel-Lucent Official Exam Center

- ⚙️ **Instant Download** After Purchase
- ⚙️ **100% Money Back** Guarantee
- ⚙️ **365 Days** Free Update
- ⚙️ **800,000+** Satisfied Customers



**QUESTION 1**

Which of the following about IES is FALSE?

- A. An IES has a configurable VC MTU.
- B. An IES interface has an IP address assigned to it.
- C. IES supports QoS.
- D. An IES requires a spoke SDP.

Correct Answer: D

---

**QUESTION 2**

Which of the following about VPRN route targets is FALSE?

- A. They are used to identify the VRF table for a prefix at the receiving PE.
- B. They are used by VPRNs to control the distribution of VPN routing information.
- C. They are distributed to all PEs and CEs that are part of the VPRN.
- D. They are distributed to PEs to identify the VRF table that a VPN-IPv4 prefix is associated with.

Correct Answer: C

---

**QUESTION 3**

A customer requests that their Layer 2 Ethernet service be configured to forward frames up to 9000 bytes. The service provider is using MPLS encapsulation. What is the minimum MTU setting for the network ports?

- A. 9000
- B. 9004
- C. 9008
- D. 9022
- E. 9036

Correct Answer: D

---

**QUESTION 4**

Which of the following is TRUE when a service uses a GRE transport tunnel?

- A. The service takes a route determined by the IGP.
- B. The tunnel does not use a service label.
- C. The service label is swapped at each hop in the transport network.
- D. The tunnel is bidirectional and only requires configuration at one end of the service.

Correct Answer: A

---

#### QUESTION 5

An ES service can have both MAC and IP filters applied to it.

- A. TRUE
- B. FALSE

Correct Answer: B

---

#### QUESTION 6

How many service labels must be signaled to bring up a fully-meshed VPLS among five PE routers?

- A. 1
- B. 5
- C. 10
- D. 20

Correct Answer: D

---

#### QUESTION 7

Which of the following best describes a distributed E-pipe Service?

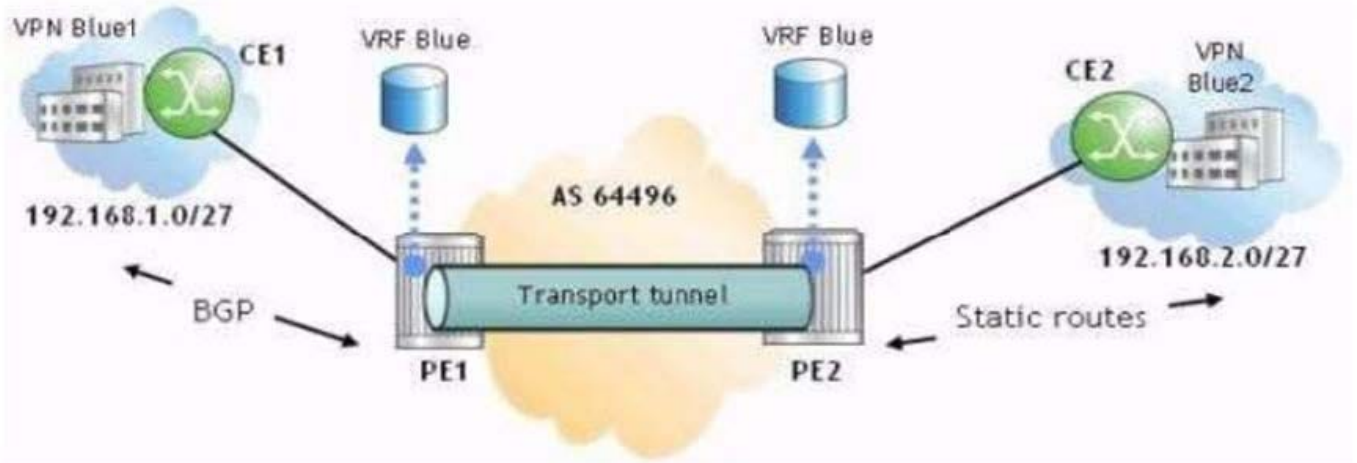
- A. An E-pipe that has 2 or more SDPs configured.
- B. An E-pipe that has 3 or more SAPs configured.
- C. An E-pipe that has 2 SAPs on the same node but no SDPs configured
- D. An E-pipe that is configured between two nodes, each having 1 SAP and 1 SDP configured.

Correct Answer: D

---

#### QUESTION 8

Click the exhibit.



Routes are exchanged between CE1 and PE1 using BGP. CE2 and PE2 use static routes to forward traffic to and from the VPRN. Which of the following is FALSE?

- A. An export policy is required on PE1 to advertise routes to CE1.
- B. An export policy is required on CE1 to advertise local routes to PE1.
- C. An export policy is required to advertise routes between the PE routers.
- D. No export policy is required on PE2 or CE2 due to the static routes.

Correct Answer: C

#### QUESTION 9

Which of the following tasks must be carried out before deleting an E-pipe service? (Choose four.)

- A. Shut down all SAPs associated with the service.
- B. Shut down all SDPs associated with the service.
- C. Delete all SAPs and SDPs associated with the service.
- D. Shut down all physical ports that are bound to a SAP.
- E. Delete the Customer ID.
- F. Shut down the service.

Correct Answer: ABCF

#### QUESTION 10

Click the exhibit.

```
R1# show router 100 fib 1
-----
FIB Display
-----
Prefix                                     Protocol
  NextHop
-----
10.1.5.0/24                                LOCAL
   10.1.5.0 (R1-R5)
10.6.4.0/24                                BGP_VPN
   10.10.10.4 (VPRN Label:131065 Transport:LDP)
10.10.10.5/32                              BGP
   10.1.5.5 Indirect (R1-R5)
10.10.10.6/32                              BGP_VPN
   10.10.10.4 (VPRN Label:131065 Transport:LDP)
192.168.10.0/24                            BGP
   10.1.5.5 Indirect (R1-R5)
192.168.20.0/24                            BGP_VPN
   10.10.10.4 (VPRN Label:131065 Transport:LDP)
-----
Total Entries : 6
```

Based on this output from PE router R1, how many other PEs are participating in the VPRN?

- A. 0
- B. 1
- C. 2
- D. 3

Correct Answer: B

**QUESTION 11**

On a Nokia 7750 SR, the OAM command `svc-ping` can be used with options `local-sdp` and `remote-sdp`. Which of the following is TRUE?

- A. `local-sdp` and `remote-sdp` indicate that all services using these SDPs are pinged.
- B. `local-sdp` and `remote-sdp` indicate that pings are initiated from both local and remote routers.
- C. Both `local-sdp` and `remote-sdp` take parameters to specify which SDPs are used for the test.
- D. `local-sdp` indicates that the ping is sent in-band, and `remote-sdp` indicates the return ping is in-band.

Correct Answer: D

**QUESTION 12**

Which of the following about route distinguishers on the Nokia 7750 SR is TRUE?

- A. Route distinguishers are appended to IPv4 prefixes to form IPv6 prefixes.
- B. CE routers use a route distinguisher to indicate which VPRN they are associated to.
- C. A route distinguisher combined with an IPv4 prefix produces a VPN-IPv4 prefix.
- D. Route distinguishers are used to determine which routes a VPRN should import.

Correct Answer: C

---

**QUESTION 13**

Which of the following about the components of a service on the Nokia 7750 SR is FALSE?

- A. An SDP can be used by more than one service and customer.
- B. A SAP can only be created on an access port.
- C. A customer can have multiple services associated to it.
- D. A customer is only created on one site of a distributed service.

Correct Answer: D

---

**QUESTION 14**

Which of the following about SDPs is TRUE?

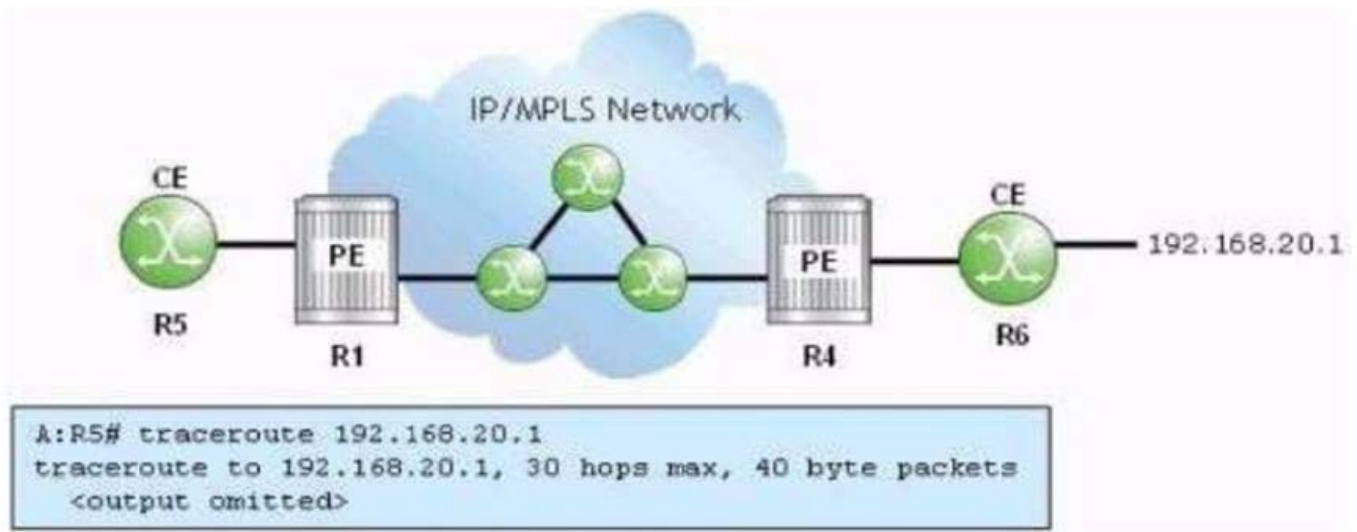
- A. SDP IDs must be locally unique.
- B. SDPs are specific to one service type.
- C. SDPs must use MPLS for their encapsulation.
- D. An SDP is required for a local service.

Correct Answer: A

---

**QUESTION 15**

Click the exhibit.



R1 and R4 are providing a VPRN for the CEs. Which of the following about the traceroute run on router R5 is TRUE?

- A. The traceroute will only show one hop: R5-R6.
- B. The traceroute will only show 2 hops; R5-R1 and R4-R6.
- C. The traceroute will only show 3 hops: R5-R1, R1-R4 and R4-R6.
- D. The traceroute will show one hop for each router in the provider core and one for each CE-PE hop.

Correct Answer: C

[4A0-104 PDF Dumps](#)

[4A0-104 VCE Dumps](#)

[4A0-104 Braindumps](#)