

4A0-105^{Q&As}

Alcatel-Lucent Virtual Private LAN Services

Pass Alcatel-Lucent 4A0-105 Exam with 100% Guarantee

Free Download Real Questions & Answers **PDF** and **VCE** file from:

<https://www.pass2lead.com/4a0-105.html>

100% Passing Guarantee
100% Money Back Assurance

Following Questions and Answers are all new published by Alcatel-Lucent Official Exam Center

- ⚙️ **Instant Download** After Purchase
- ⚙️ **100% Money Back** Guarantee
- ⚙️ **365 Days** Free Update
- ⚙️ **800,000+** Satisfied Customers



QUESTION 1

What is the SA in the Ethernet frame used for by a layer 2 switch?

- A. MAC learning
- B. SA filtering
- C. Routing table population
- D. Frame forwarding

Correct Answer: A

QUESTION 2

Click on the exhibit below.

```
A:PE-Z>config>service# show service id 9000 base
=====
Service Basic Information
=====
Service Id       : 9000                Vpn Id           : 0
Service Type     : VPLS
Customer Id      : 100
Last Status Change: 02/12/2007 13:17:11
Last Mgmt Change  : 02/12/2007 13:17:11
Admin State      : Up                  Oper State        : Up
MTU              : 1514                Def. Mesh VC Id   : 1000
SAP Count        : 0                  SDP Bind Count    : 1
Send Flush on Fail: Disabled

-----
Service Access & Destination Points
-----
Identifier                Type      AdmMTU  OprMTU  Adm    Opr
-----
=====
```

Based on the following output what will the vc-id be of any mesh-sdp bound to this service?

- A. 9000
- B. 1514
- C. 1000
- D. 100

Correct Answer: C

QUESTION 3

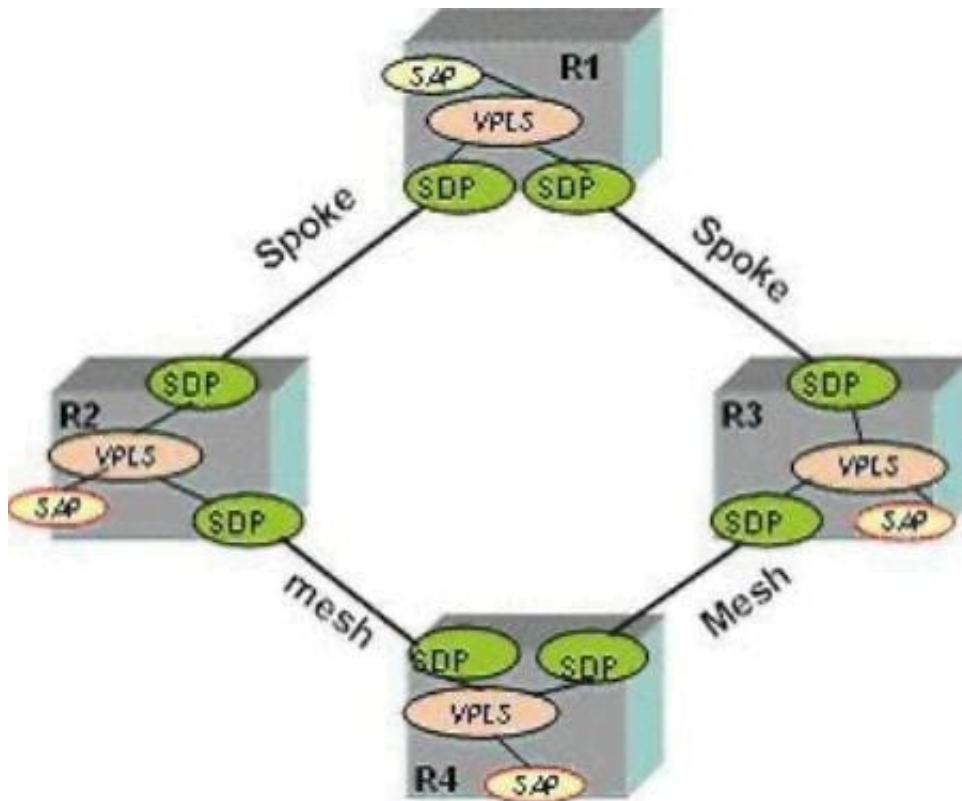
What are the advantages of running a physical ring topology with a mesh of mesh-SDPs? (Choose 2)

- A. STP can be used to break the loop.
- B. STP is not required to break the loop because of split-horizon rules.
- C. If the traffic is primarily multicast, a full mesh of SDPs is a simple and efficient design.
- D. If the traffic is primarily Unicast, a full mesh of SDPs is a simple and efficient design.

Correct Answer: BD

QUESTION 4

Click on the exhibit below.



The VPLS service MTU on R2 is 1514 bytes. What must the service MTU be on all other routers participating in the VPLS?

- A. The service MTU must be equal to or smaller than 1514 bytes.
- B. The service MTU must be 1514 bytes.
- C. The service MTU must be equal to or greater than 1514 bytes.
- D. The service MTU can be any value.

Correct Answer: B

QUESTION 5

What type of SDP cannot be configured in an I-VPLS?

- A. Mesh-sdp
- B. Spoke-sdp
- C. MPLS
- D. GRE

Correct Answer: A

QUESTION 6

How does the IEEE 802.1ag loopback function differently from the loopback feature in 802.3ah? (Choose 2)

- A. The loopback function in 802.1ag is an intrusive test that will stop customer data.
- B. The loopback function of 802.1ag is a non-intrusive "ping" sent from a MEP to a remote MEP or MIP.
- C. The loopback function in 802.3ah is an intrusive test that will loop customer data.
- D. The loopback function of 802.1ag is an intrusive test that will "loop" all customer data back to the original sender.

Correct Answer: BC

QUESTION 7

IEEE 802.3ah is similar to SONET/SDH in that it can count and report bit errors and frame errors.

- A. TRUE
- B. FALSE

Correct Answer: A

QUESTION 8

To reduce the amount of flooding between PE devices which of the following steps should be taken?

- A. Configure the local age timer to be larger.
- B. Configure the local age timer to be lower.
- C. Configure the remote age timer to be larger.

D. Configure the remote age to be lower.

Correct Answer: C

QUESTION 9

What scaling factors should a network engineer be aware of when designing VPLS networks? (Choose 3)

A. Control plane scaling.

B. Data plane scaling.

C. Network touches.

D. Route table reduction.

E. OAM tools.

Correct Answer: ABC

QUESTION 10

Which physical topology is NOT commonly deployed in today's VPLS networks?

A. Ring topologies.

B. Metro-to-metro topologies

C. H-VPLS topologies.

D. Partial-mesh topologies.

Correct Answer: D

QUESTION 11

In IEEE 802.1ag, how are loops detected?

A. Spanning-tree BPDUs are returned to the sender.

B. The MEP sees its own CFM frames returned to itself.

C. This is not a function of IEEE 802.1ag but of 802.1D

D. The record field of the CFM frame keeps track of chassis-mac addresses.

Correct Answer: B

QUESTION 12

Assuming TLDP and RSVP are both being used in an MPLS network core which of the following statements is true?

- A. TLDP is used to create the inner label, RSVP is used to create the outer label.
- B. TLDP is used to create the outer label, RSVP is used to create the inner label.
- C. TLDP and RSVP cannot be used in the same network since they both provide the same label.
- D. When RSVP is used, TLDP must be disabled and static vc labels should be used.
- E. TLDP and RSVP can be used to create either labels based on how they are configured.

Correct Answer: A

QUESTION 13

Five VPLS services have been configured between two PE routers. What is the minimum amount of SDPs that must be configured?

- A. 5-one for each service.
- B. 2-one in each direction.
- C. 10-five in each direction.
- D. None of the above.

Correct Answer: B

QUESTION 14

What needs to be configured in a VPLS in order to forward customer STP BPDUs transparently?

- A. Spanning tree must be enabled within the VPLS.
- B. Spanning tree BPDUs must be untagged.
- C. Spanning tree BPDUs must be tagged.
- D. Spanning tree must be disabled within the VPLS.

Correct Answer: D

QUESTION 15

If the max remote-age timer of a B-VPLS is reached, what happens to the remotely learned MAC addresses in the I-VPLS service?

- A. There is no effect. The MAC addresses for the I-VPLS age out independently of the aging of B-VPLS addresses.
- B. The MAC addresses for the I-VPLS will age out immediately following the remote-age out of the backbone-macs of

the B-VPLS.

C. By default, the remote-age timer of the B-VPLS is configured to 0 and addresses do not age out. The I-VPLS uses its own timer.

D. The same timer is used for B-VPLS and I-VPLS addresses on the node.

Correct Answer: B

[4A0-105 VCE Dumps](#)

[4A0-105 Exam Questions](#)

[4A0-105 Braindumps](#)