

4A0-106^{Q&As}

Alcatel-Lucent Virtual Private Routed Networks

Pass Alcatel-Lucent 4A0-106 Exam with 100% Guarantee

Free Download Real Questions & Answers **PDF** and **VCE** file from:

<https://www.pass2lead.com/4a0-106.html>

100% Passing Guarantee
100% Money Back Assurance

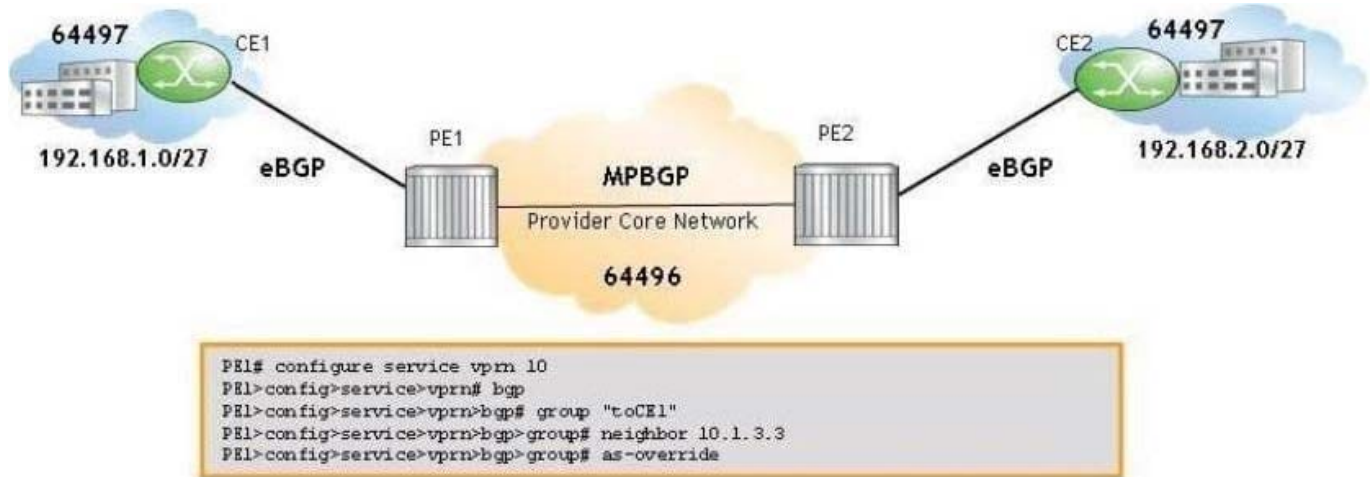
Following Questions and Answers are all new published by Alcatel-Lucent Official Exam Center

- ⚙️ **Instant Download** After Purchase
- ⚙️ **100% Money Back** Guarantee
- ⚙️ **365 Days** Free Update
- ⚙️ **800,000+** Satisfied Customers



QUESTION 1

Click the exhibit.



AS-override is configured on PE1 to eliminate the BGP loops. What is the expected AS-Path in the VPNIPv4 route 64496:10:192.168.2.0/27 received by PE1?

- A. 64496 64497
- B. 64496
- C. 64497
- D. 64497 64497

Correct Answer: C

QUESTION 2

Click the exhibit.

A.

```
PE3# configure service vprn 1
    grt-lookup
        enable-grt
            static-route 0.0.0.0/0 grt
        exit
    exit
```

B.

```
PE3# configure service vprn 1
    grt-lookup
        static-route 0.0.0.0/0
    exit
```

C.

```
PE3# configure service vprn 1
    grt-lookup
        static-route 0.0.0.0/0
    enable-grt
    exit
exit
```

D.

```
PE3# configure service vprn 1
    enable-grt
        static-route 0.0.0.0/0 grt-lookup
    exit
```

When configuring the double lookup functionality, which configuration forces the global routing table to be consulted for any packet matching the VPRN default route?

- A. A
- B. B
- C. C
- D. D

Correct Answer: A

QUESTION 3

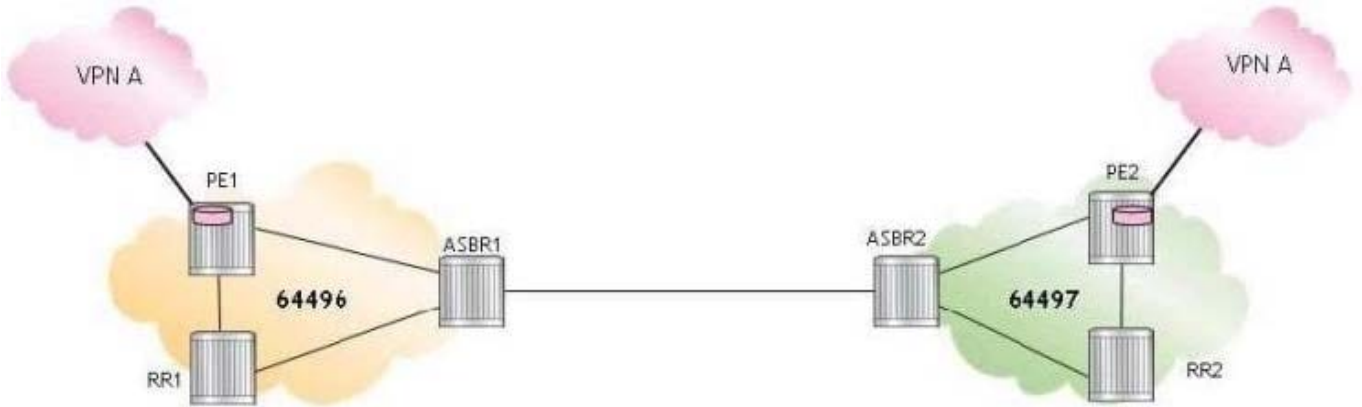
Which command may be used on an Alcatel-Lucent 7750 SR to verify the number of VRF routes allowed, based on the maximum routes value configured in the service instance?

- A. Show service id base
- B. Show router bgp routes
- C. Show service id maximum-routes
- D. Show router status

Correct Answer: A

QUESTION 4

Click the exhibit.



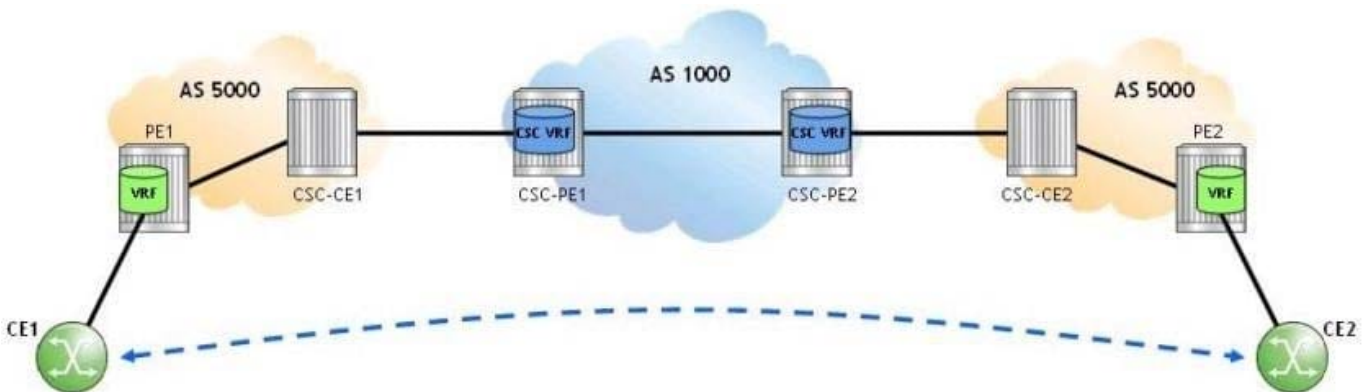
Routers RR1 and RR2 are configured as route reflectors. For the inter-AS model C VPRN, which of the following about the BGP sessions established between the routers is TRUE?

- A. ASBR2 has a total of three BGP sessions established: one with PE2, one with RR2, and one with ASBR1.
- B. RR1 has a total of three BGP sessions established: one with PE1, one with RR2, and one with ASBR1.
- C. PE2 has a total of two BGP sessions established: one with RR2 and one with ASBR2.
- D. PE1 has a total of two BGP sessions established: one with RR1 and one with PE2.

Correct Answer: B

QUESTION 5

Click the exhibit.



A Carrier Supporting Carrier (CSC) VPRN is configured on an Alcatel-Lucent 7750 SR for a customer carrier offering VPRN services. Which of the following about this configuration is FALSE?

- A. In the CSC VPRN, configure an eBGP session between CSC-PE and CSC-CE and use the "advertiselabel vpn-ipv4" CLI command to enable the advertisement of VPN-IPv4 routes.
- B. When the customer carrier uses the same autonomous system number in various sites, use the "loopdetect off" CLI command to disable the loop detection functionality on CSC-CE and PE routers.
- C. On the CSC-PE routers, use the "carrier-carrier-vpn" CLI command to configure the VPRN service as CSC.

D. Configure an iBGP session between PE1 and PE2 and use the "family vpn-ipv4" CLI command to directly exchange end-customer routes learned from CE1 and CE2.

Correct Answer: A

QUESTION 6

For Carrier Supporting Carrier (CSC) VPRN, which of the following is NOT applicable to both types of customer carriers: BGP/MPLS service providers and Internet service providers?

- A. eBGP is used for route and label exchange between CSC-CE and CSC-PE routers.
- B. Both IGP and MPLS are required within each customer carrier site.
- C. MP-iBGP is used to advertise routes between the CSC-PE routers.
- D. End-customer and Internet routes are advertised directly between the PE routers.

Correct Answer: D

QUESTION 7

Which of the following describes how a route is handled when is received at the PE from the local CE?

- A. It will be placed into the customer VRF and automatically propagated into the BGP table
- B. It will be placed into the customer VRF and then be propagated to the BGP table only if BGP is used as the PE-CE protocol
- C. It will be placed into the customer VRF and require an export policy to be propagated to the BGP table
- D. It will be placed into the customer VRF and require an export policy to be propagated to the BGP table if RIP is used as the PE-CE protocol
- E. It will be placed into the customer VRF and require an export policy to be placed into the BGP table if a protocol other than BGP is used as the PE-CE protocol

Correct Answer: A

QUESTION 8

A service provider core consists of 6 PE and 4 P routers. Assuming route reflection is not used, how many internal BGP sessions are required in the service provider network for a correct operation of VPRN services?

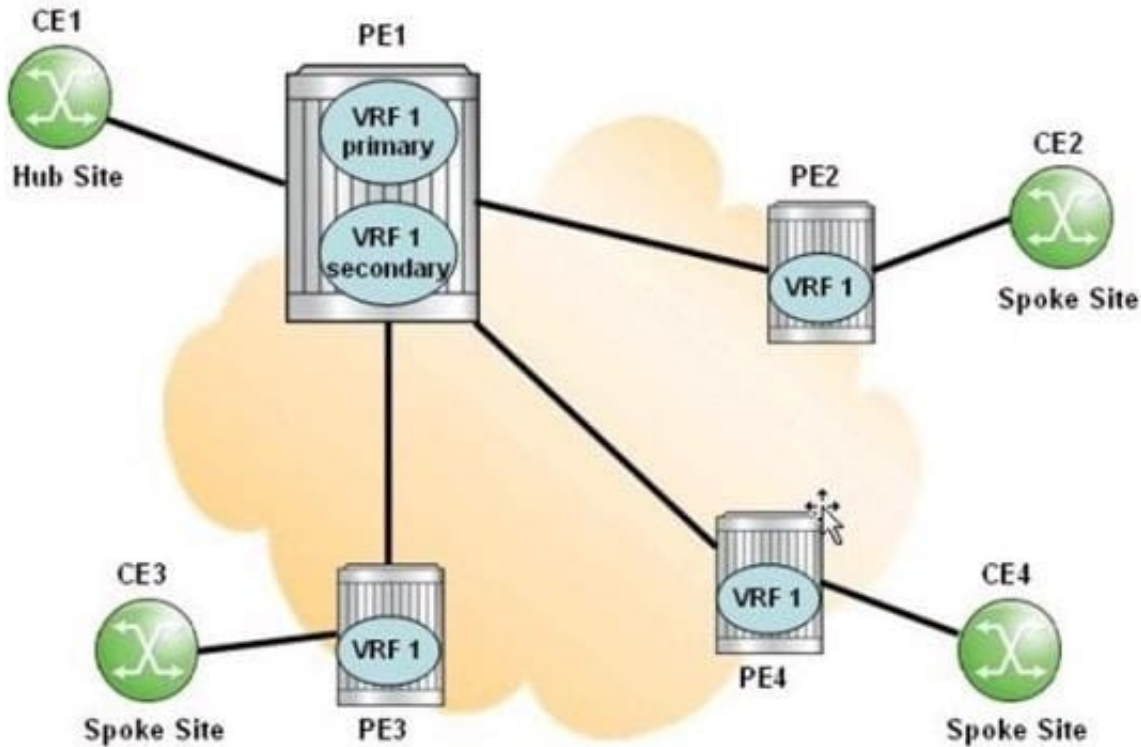
- A. 1
- B. 5
- C. 15
- D. 30

E. 45

Correct Answer: C

QUESTION 9

Click the exhibit.



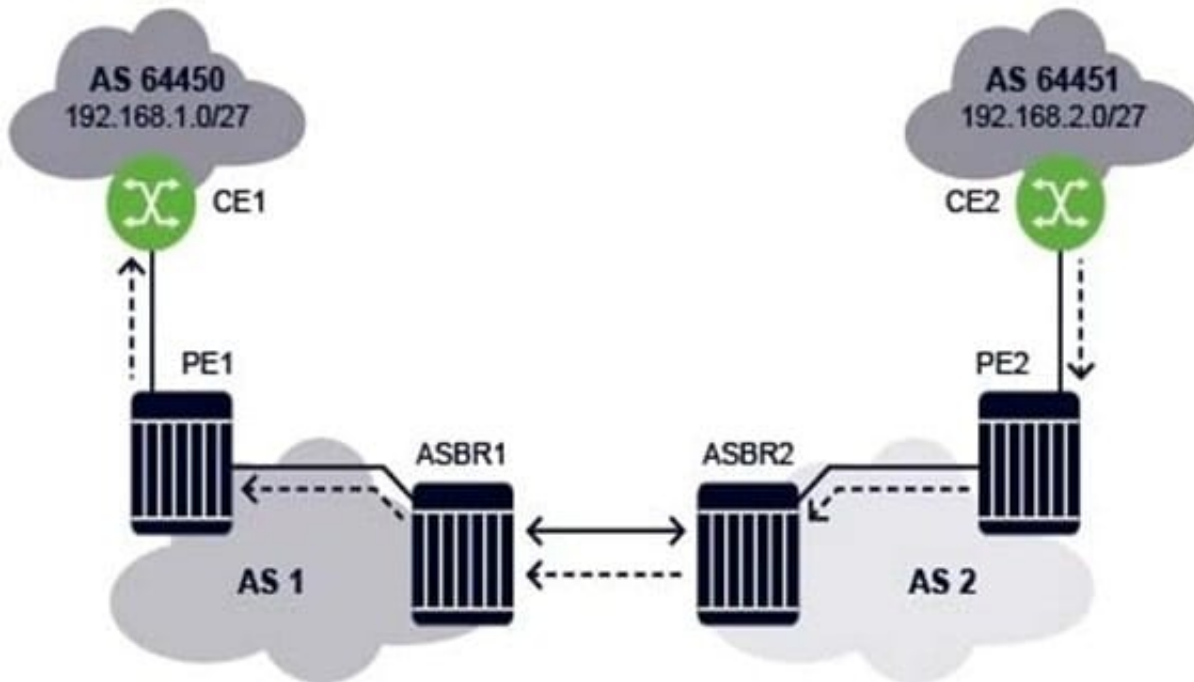
Which of the following statements about the implementation of the CE hub and spoke topology is FALSE?

- A. PE1 advertises spoke routes to CE1.
- B. The primary VRF on PE1 is used to route data packets from the hub CE to the spoke sites.
- C. The secondary VRF on PE1 contains routes learned from the spoke sites.
- D. Spoke sites do not learn routes from other spoke sites directly.

Correct Answer: C

QUESTION 10

For the Inter-AS model A VPRN, which of the following is FALSE when CE2 sends an IP packet to 192.168.1.1?

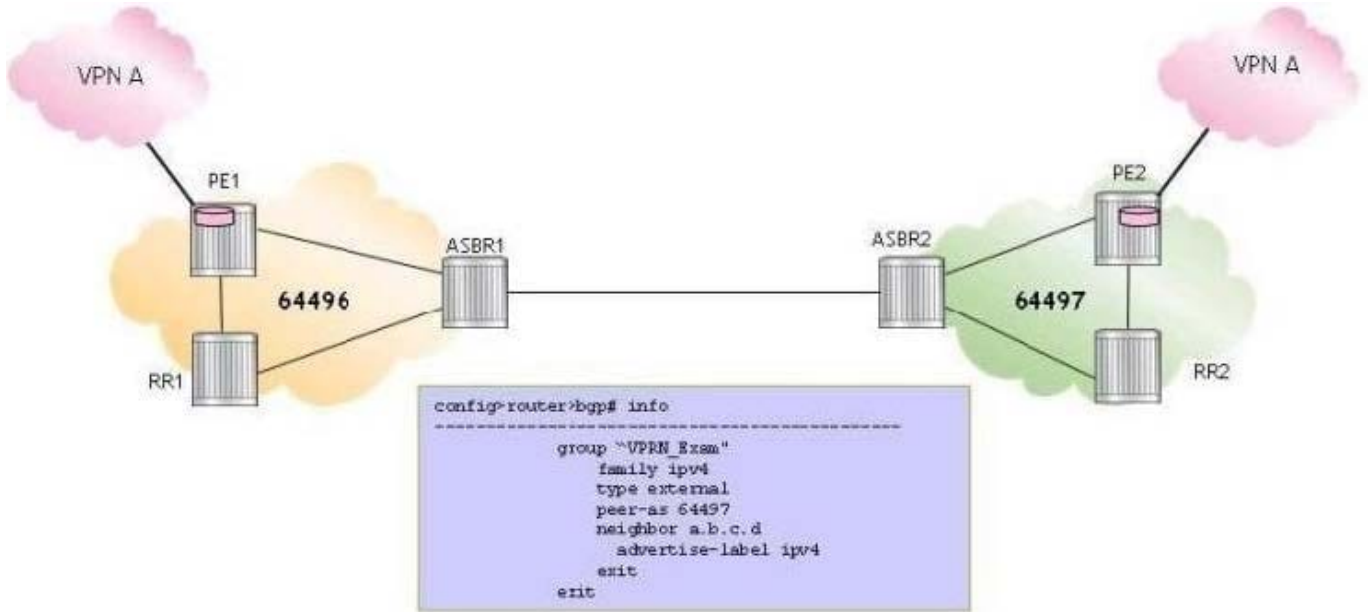


- A. CE2 forwards an unlabeled IP packet to PE2 via the VPRN interface.
- B. PE2 pushes one label on the IP packet and label-switches it to ASBR2.
- C. ASBR2 forwards an unlabeled IP packet to ASBR1.
- D. ASBR1 pushes two labels on the IP packet and label-switches the packet to PE1.

Correct Answer: B

QUESTION 11

Click the exhibit.



For the inter-AS model C VPRN, which router is configured as shown?

- A. PE1
- B. RR1
- C. ASBR1
- D. ASBR2

Correct Answer: C

QUESTION 12

Which of the following protocols are supported by the Alcatel-Lucent 7750 SR for the creation of transport tunnels within an autonomous system?

- A. MP-BGP, LDP, RSVP-TE
- B. LDP, RSVP-TE, GRE
- C. MP-BGP, RSVP-TE, GRE
- D. MP-BGP, LDP
- E. MP-BGP only

Correct Answer: B

QUESTION 13

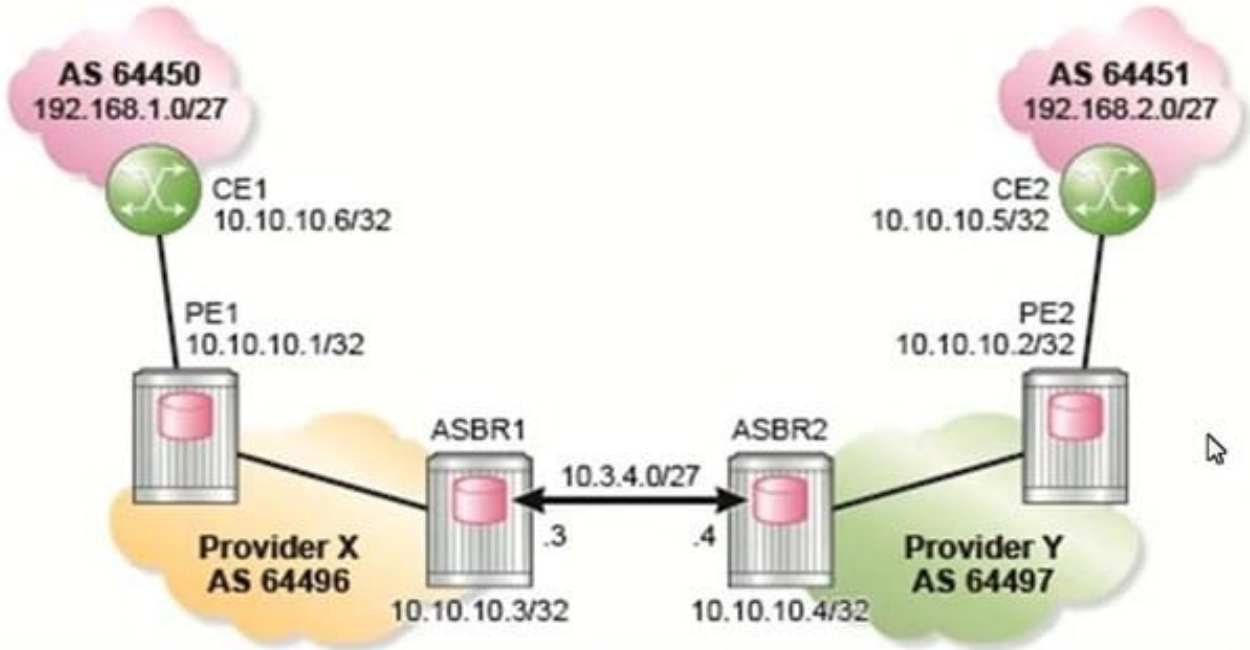
Which of the following about the control plane in Carrier Supporting Carrier (CSC) VPRN is FALSE?

- A. End-customer routes are populated in the network provider CSC VRF.
- B. The customer carrier does not learn any network provider internal routes.
- C. The network provider learns customer carrier PE system addresses.
- D. Routes exchanged between the customer carrier and the network provider are labeled.

Correct Answer: A

QUESTION 14

Which of the following commands produces the output for the inter-AS model B VPRN?



```
A:
=====
BGP Router ID:10.10.10.3      AS:64496      Local AS:64496
=====
BGP VPN-IPv4 Routes
=====
Flag  Network                               LocalPref  MED
      Nexthop (Router)                   Path-Id    Label
      As-Path
-----
*>i  64496:1:10.1.6.0/27                   100        None
      10.10.10.1                          None       131070
      No As-Path
*>i  64496:1:10.2.5.0/27                   None       None
      10.3.4.4                             None       131068
      64497
*>?  64496:1:10.10.10.5/32                 None       None
      10.3.4.4                             None       131068
      64497 64451
*>?  64496:1:10.10.10.6/32                 100        None
      10.10.10.1                          None       131070
      64450
*>?  64496:1:192.168.1.0/27               100        None
      10.10.10.1                          None       131070
      64450
*>?  64496:1:192.168.2.0/27               None       None
      10.3.4.4                             None       131068
      64497 64451
-----
Routes : 6
```

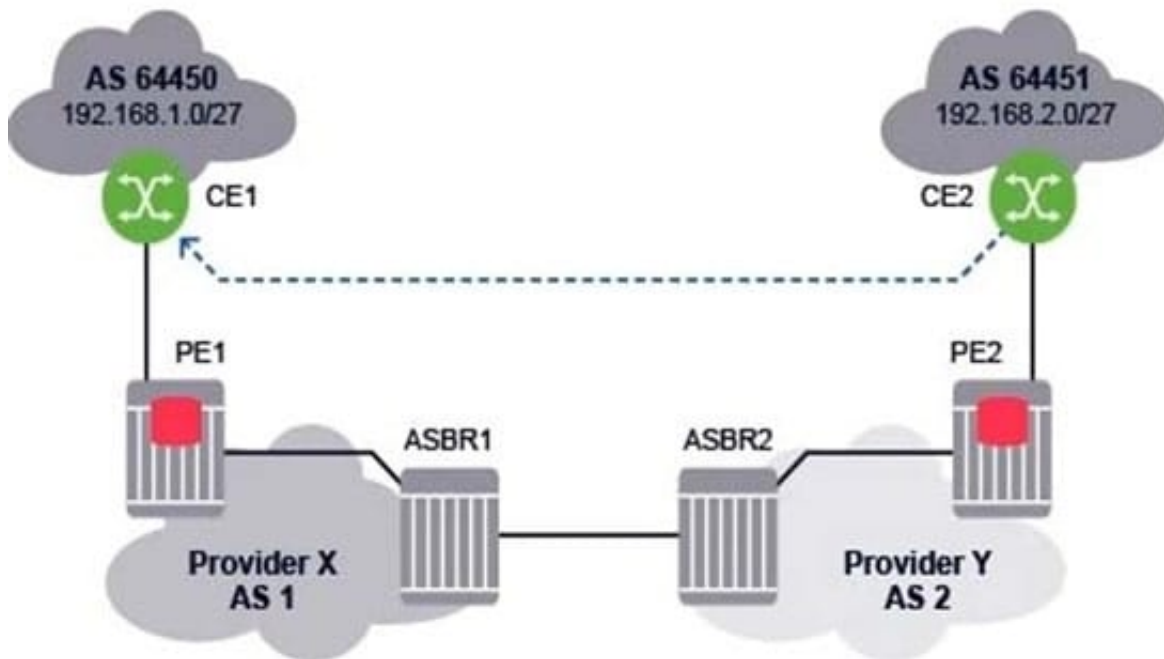
- A. show router 10 bgp routes vpn-ipv4
- B. show router bgp routes

- C. show router bgp routes vpn-ipv4
- D. show router route-table

Correct Answer: C

QUESTION 15

For the Inter-AS model VPRN, which of the following is FALSE when CE2 sends an IP packet to 192.168.1.1?



- A. PE2 pushes two labels on the IP packet and forwards it to ASBR2.
- B. ASBR2 forwards the IP packet with one label to ASBR1.
- C. ASBR1 label-switches the packet and forwards it with one label to PE1.
- D. PE1 forwards an unlabeled IP packet to CE1.

Correct Answer: C

[Latest 4A0-106 Dumps](#)

[4A0-106 PDF Dumps](#)

[4A0-106 Braindumps](#)