

4A0-M10^{Q&As}

Nokia 5G Packet Core Architecture

Pass Nokia 4A0-M10 Exam with 100% Guarantee

Free Download Real Questions & Answers **PDF** and **VCE** file from:

<https://www.pass2lead.com/4a0-m10.html>

100% Passing Guarantee
100% Money Back Assurance

Following Questions and Answers are all new published by Nokia
Official Exam Center

-  **Instant Download** After Purchase
-  **100% Money Back** Guarantee
-  **365 Days** Free Update
-  **800,000+** Satisfied Customers



QUESTION 1

Which of the following statements about the 5G-globally unique temporary identity (5G-GUTI) is FALSE?

- A. The 5G-GUTI provides a clear identification of the UE without revealing the UE permanent identity.
- B. The 5G-GUTI contains an element identifying the AMF which allocated it.
- C. The 5G network pages an idle UE using its 5G-GUTI.
- D. During the initial registration procedure, the AMF allocates a 5G-GUTI and sends it to the UE.

Correct Answer: A

QUESTION 2

Which of the following statements about 5G QoS Flows is FALSE?

- A. A QoS Flow is the finest granularity of QoS differentiation within a PDU session.
- B. A PDU session has one or more QoS Flows.
- C. All QoS Flows of a PDU session are served by a single N3 GTP-U tunnel.
- D. Each QoS Flow is served by a dedicated data radio bearer.

Correct Answer: D

QUESTION 3

Which of the following statements about Option 3X dual connectivity is FALSE?

- A. VoLTE traffic is handled by the LTE network.
- B. Dual connectivity is used for high throughput services such as eMBB.
- C. When NR radio quality becomes sub-optimal, gNB decides to split the bearer.
- D. Both eNB and gNB are connected with S1-U interfaces to SGW.

Correct Answer: A

QUESTION 4

Which of the following best describes the Secondary Node Addition procedure?

- A. Used to transfer bearer contexts from the master eNB to the secondary gNB.
- B. Used to establish a UE context at the gNB for a UE that supports option 3X.
- C. Used to establish connectivity from the gNB to the EPC.
- D. Used to establish an X2 connection between the eNB and gNB.

Correct Answer: D

QUESTION 5

Which of the following statements about network slice selection assistance information (NSSAI) is FALSE?

- A. Allowed NSSAI is a set of slices provided to UE by AMF during UE registration procedure.
- B. Requested NSSAI is a set of slices provided by UE to the network and contains values from serving PLMN.
- C. Subscribed NSSAI is a set of slices specified in the UE subscription data and contains only home PLMN values.
- D. Configured NSSAI is a set of slices configured on the AMF and contains slices supported per tracking area.

Correct Answer: A

QUESTION 6

Which of the following statements regarding cloud RAN architecture is FALSE?

- A. The gNB is split into three functional modules: a radio unit (RU), a distributed unit (DU), and a centralized unit (CU).
- B. DU performs the non-real time processing of layer 2.
- C. The fronthaul segment connects RU to DU and the midhaul segment connects DU to CU.
- D. CU can be deployed in the cloud as a VNF.

Correct Answer: D

Reference: <https://www.5gtechnologyworld.com/open-ran-functional-splits-explained/>

QUESTION 7

Which 5GS network function allows UE connectivity to 5GC through non-3GPP access networks?

- A. SEPP

- B. N3IWF
- C. NWDAF
- D. NEF

Correct Answer: C

QUESTION 8

The exhibit below displays a packet capture of the PFCP Session Modification Request message sent during a PDU Session Establishments procedure. What do the highlighted TEID and IP Address refer to?

Source	Destination	Protocol	Length	Info
SMF	UPF	PFCP	198	PFCP Session Modification Request
Message Type: PFCP Session Modification Request (52)				
Length: 152				
SEID: 0x000000000001a100				
Sequence Number: 786434				
Spare: 0				
▼ Update FAR : [Grouped IE]				
IE Type: Update FAR (10)				
IE Length: 62				
> FAR ID: Dynamic by CP 537198592				
▼ Apply Action:				
IE Type: Apply Action (44)				
IE Length: 1				
> Flags: 0x02, FORM (Forward)				
▼ Update Forwarding Parameters : [Grouped IE]				
IE Type: Update Forwarding Parameters (11)				
IE Length: 45				
> Destination Interface : Access				
> Network Instance : n3-default				
▼ Outer Header Creation :				
IE Type: Outer Header Creation (84)				
IE Length: 10				
Outer Header Creation Description: GTP-U/UDP/IPv4 (256)				
TEID: 0x10000001				
IPv4 Address: 10.10.100.32 (10.10.100.32)				

- A. The N3 TEID allocated by gNB and the gNB IP address.
- B. The N3 TEID allocated by UPF and the UPF IP address.
- C. The N3 TEID allocated by SMF and the SMF IP address.

D. The N3 TEID allocated by SMF and the UPF IP address.

Correct Answer: D

QUESTION 9

Which of the following statements about the protection of service-based interfaces (SBIs) is FALSE?

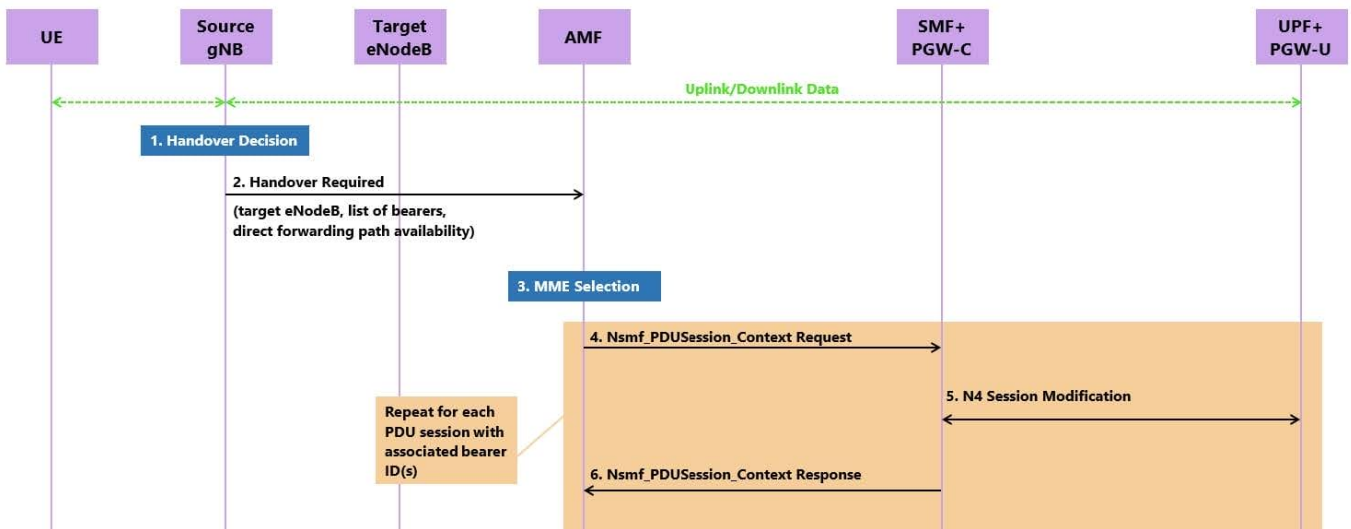
- A. The transport layer security (TLS) performs certification-based authentication, providing connection security between network functions within a PLMN.
- B. The OAuth 2.0 framework is used to secure the communication between network functions within a PLMN at the network layer.
- C. The network domain security/Internet protocol (NDS/IP) provides confidentiality and data integrity between network functions within a PLMN.
- D. The security edge protection proxy (SEPP) handles the security of inter-domain SBIs and protects the interaction between network functions in different PLMNs.

Correct Answer: D

Reference: <https://www.broadforward.com/security-edge-protection-proxy/>

QUESTION 10

The exhibit below illustrates signaling messages exchanged during a 5GS to EPS Handover procedure using N26. Which information is NOT provided to AMF in step 6 for a PDU session that supports interworking?



- A. PGW-U indirect data forwarding tunnel info for the corresponding PDN connection
- B. PGW-C S5-C tunnel info for the corresponding PDN connection

- C. PGW-U S5-U tunnel info for each EPS bearer
- D. EPS bearer ID and QoS parameters for each EPS bearer

Correct Answer: D

[4A0-M10 PDF Dumps](#)

[4A0-M10 VCE Dumps](#)

[4A0-M10 Practice Test](#)