

# 75940X<sup>Q&As</sup>

Avaya Converged Platform Integration

## Pass Avaya 75940X Exam with 100% Guarantee

Free Download Real Questions & Answers **PDF** and **VCE** file from:

<https://www.pass2lead.com/75940x.html>

100% Passing Guarantee  
100% Money Back Assurance

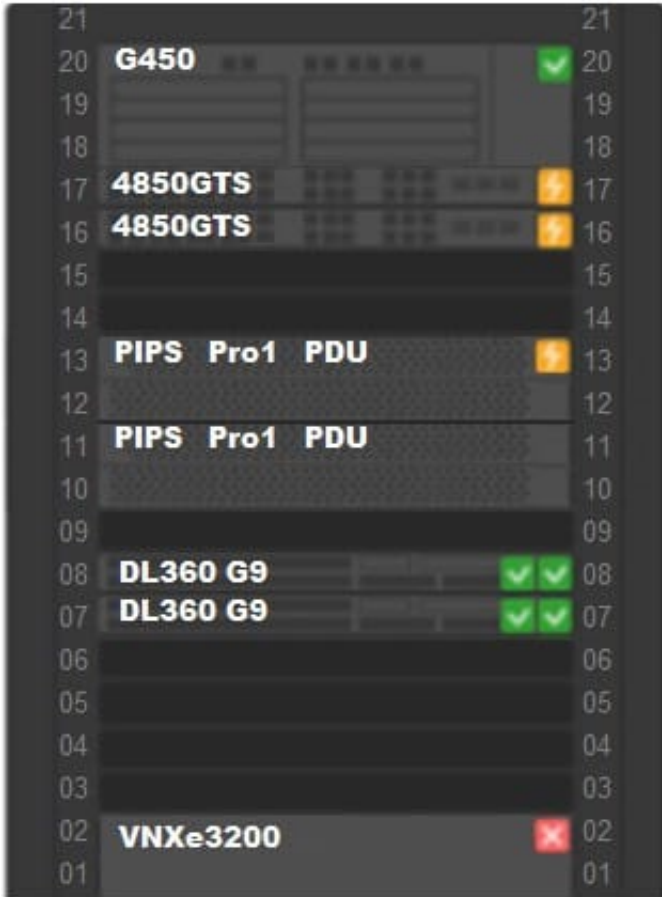
Following Questions and Answers are all new published by Avaya  
Official Exam Center

-  **Instant Download** After Purchase
-  **100% Money Back** Guarantee
-  **365 Days** Free Update
-  **800,000+** Satisfied Customers



**QUESTION 1**

Refer to the exhibit.



An administrator navigates to the Avaya Orchestrator page shown in the exhibit. The DL360 G9 servers display two Green status icon.

What does this indicate?

- A. There are two Power Supplies associated with each server and both are responsive.
- B. There are two IP addresses associated with each server and both are responsive.
- C. The servers are paired together for redundancy purposes.
- D. The servers are very healthy.

Correct Answer: D

Reference: <https://downloads.avaya.com/css/P8/documents/101061680> (140)

**QUESTION 2**

A new instance/customer and new VMs are being added to the ACP 4200. As part of this procedure, additional VLANs are added to the ACP 4200.

What are these additional VLANs required to support?

- A. The new instances of ServerTech PDUs.
- B. The new instances of iSCSI Storage Area Networks.
- C. The new instances of Avaya Aura applications.
- D. A new instance of Avaya Orchestrator.

Correct Answer: A

---

### QUESTION 3

An administrator needs to access Avaya Orchestrator.

How does an administrator log into the management interface of Avaya Orchestrator?

- A. By using a browser to login to System Manager, then clicking on the Avaya Orchestrator link.
- B. By using a browser to login to Avaya Orchestrator's FQDN or IP address.
- C. By downloading and using the System Manager Administrator client.
- D. By downloading and using the Avaya Orchestrator Administrator client.

Correct Answer: B

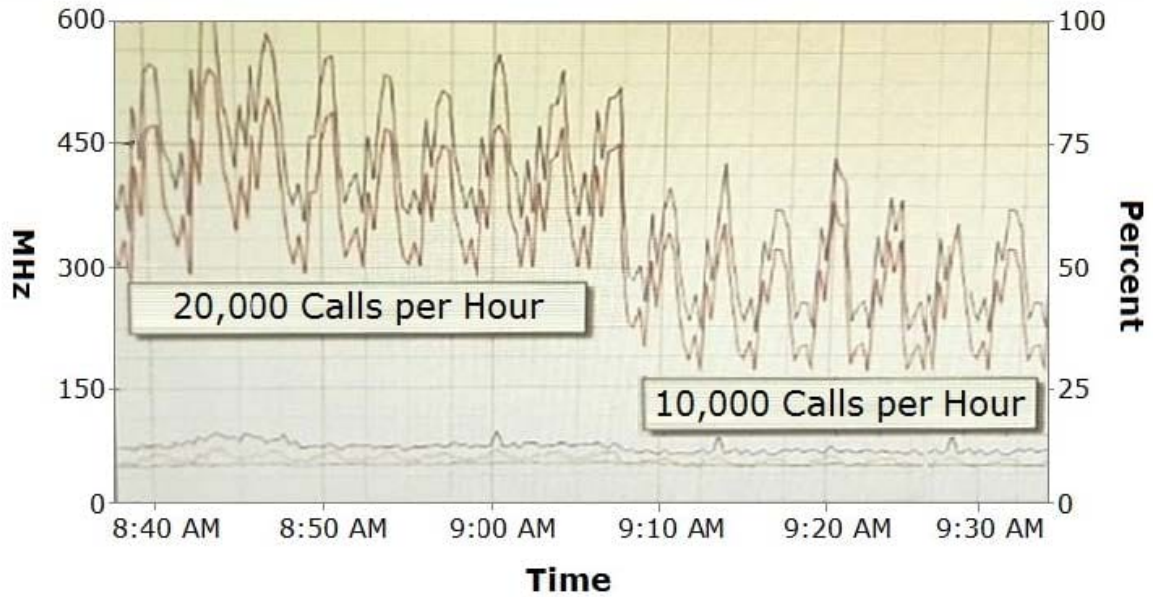
Reference: <https://downloads.avaya.com/css/P8/documents/101061680>

---

### QUESTION 4

Refer to the exhibit.

**CPU/Real-time, 2/15/2013 8:37:49 AM - 2/15/2013 9:37:49 AM - cpodCM1**



**Performance Chart Legend**

Key	Object	Measurement	Rollup	Units
	0	Usage in MHz	average	MHz
	1	Usage in MHz	average	MHz
	cpodCM1	Usage	average	Percent
	cpodCM1	Usage in MHz	average	MHz
	2	Usage in MHz	average	MHz

The CPU performance of Communication Manager (CM) shows a significant difference depending on the call rates.

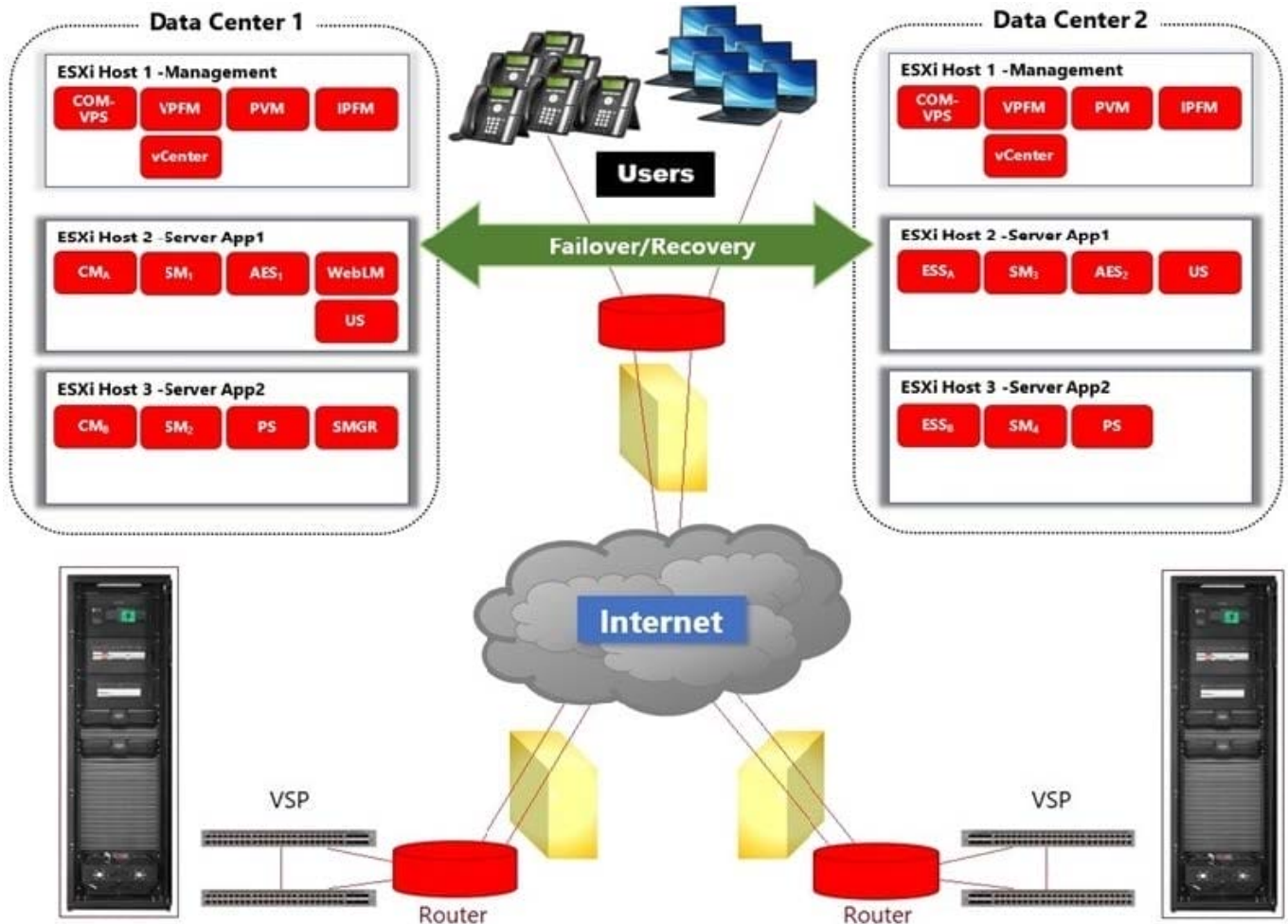
Which statement about making configuration changes is true?

- A. Increasing the number of Virtual CPUs allocated to CM might help to reduce this difference.
- B. Ensuring that a secondary CM is available to allow for load-balancing might help to reduce this difference.
- C. Migrating the CM Virtual Machine to another ESXi host that is less busy might help to reduce this difference.
- D. Reducing this difference is not necessary because this is expected behavior.

Correct Answer: B

**QUESTION 5**

Refer to the exhibit.



In the deployment shown in the exhibit, how is High Availability achieved across the two Data Centers?

- A. By ensuring that the L2 VLANs are extended across to both Data Centers.
- B. By managing both Data Centers using the same vCenter Server and using vMotion and DRS.
- C. By using Virtualization Provisioning Service (VPS) to automate the provisioning of the network hardware and vSwitches across the two Data Centers.
- D. By using Avaya Aura?Application High Availability features.

Correct Answer: C

Reference: <https://downloads.avaya.com/css/P8/documents/100182353>

**QUESTION 6**

A customer experienced an outage of one of their Host servers in their ACP 4200 solution. Additionally, after the failure, all of the applications that were running on the failed host, did not recover to another host.

To verify the configuration, which third party management tool needs to be used?

- A. SSH into the switches

- B. Avaya Orchestrator
- C. Nimble Storage web interface
- D. vSphere Web Client

Correct Answer: D

**QUESTION 7**

Refer to the exhibit.

The screenshot shows the vSphere DRS Rules configuration page. On the left is a navigation pane with 'DRS Rules' selected. The main area is titled 'DRS Rules' and contains a table with the following data:

Name	Type	Enabled	Conflicts	Defined...
SMRule	Separate Virtual Machines	Yes	0	User
MSCRule	Run VMs on Hosts	Yes	0	User
CMRule	Separate Virtual Machines	Yes	0	User

Below the table is the 'DRS Rule Details' section for the selected SMRule. It states: 'The listed 2 Virtual Machines must run on different hosts.' Below this is a table of Rule Members:

Rule Members	Conflicts
SC-Avaya Aura Session Ma...	0
SC-Avaya Aura Session Ma...	0

To the right of the Rule Members table is a 'Conflicts' table which is currently empty.

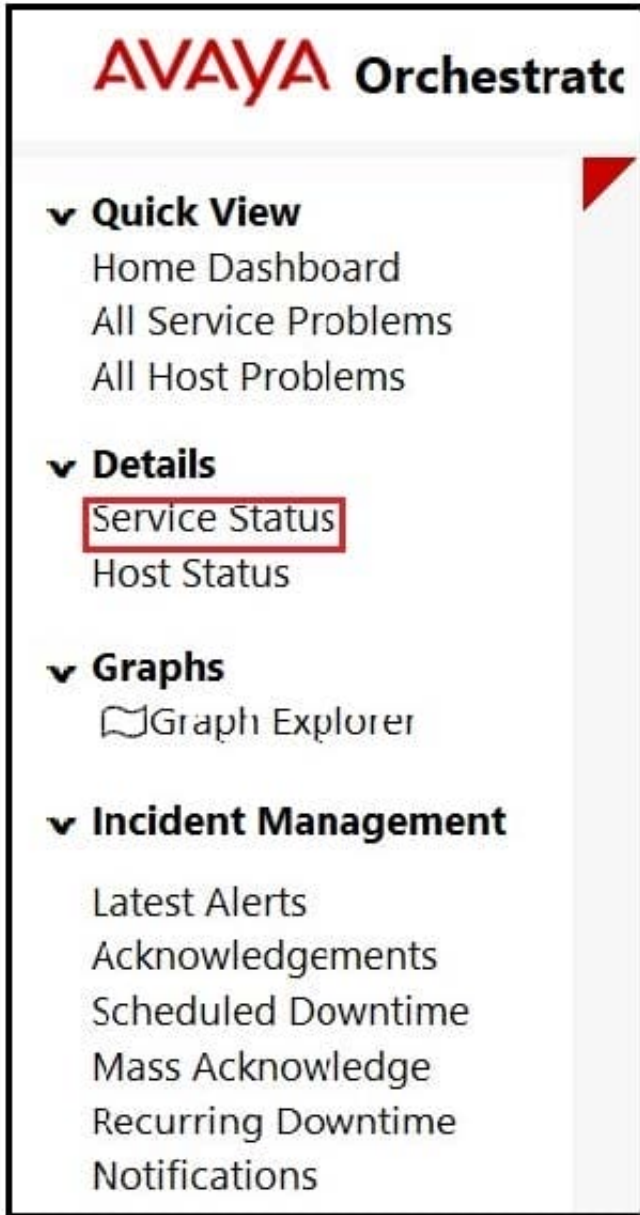
What is the purpose of the "SMRule" DRS rule that states the two Avaya Aura?Session Managers must run off different ESXi hosts?

- A. To improve the latency of DRS load-balancing
- B. To prevent a single ESXi host from being overloaded with SIP traffic
- C. To preserve seamless failover/recovery across primary and secondary Session Managers
- D. To reduce the memory and CPU load on a single ESXi host

Correct Answer: C

**QUESTION 8**

Refer to the exhibit.



An administrator navigates to the Avaya Orchestrator link shown in the exhibit. What would the Administrator be able to monitor here?

- A. A list of Services with status of Warning or Critical.
- B. A list of Services with status of OK.
- C. A list of Services regardless of status.
- D. A list of Services which have additional details.

Correct Answer: D

Reference: <https://downloads.avaya.com/css/P8/documents/101061680>

**QUESTION 9**

Using VMware networking in ACP 4200, how are Virtual NICs mapped to physical NICs?

- A. Via DRS rules
- B. On a 1-to-1 basis
- C. Via Virtual Switches and Port Groups
- D. Via the VNIIC mapping tables

Correct Answer: D

---

**QUESTION 10**

What is a benefit of using Virtual Router Redundancy Protocol (VRRP) on the VSP switches in the ACP 4200?

- A. It creates virtual Layer 2 connections for the VMs.
- B. It allows you to connect to the switches for management access.
- C. It ensures the end systems do not need to change their gateway IP address in the event of a fail-over.
- D. It allows the end systems to automatically change their gateway IP address in the event of a fail-over.

Correct Answer: D

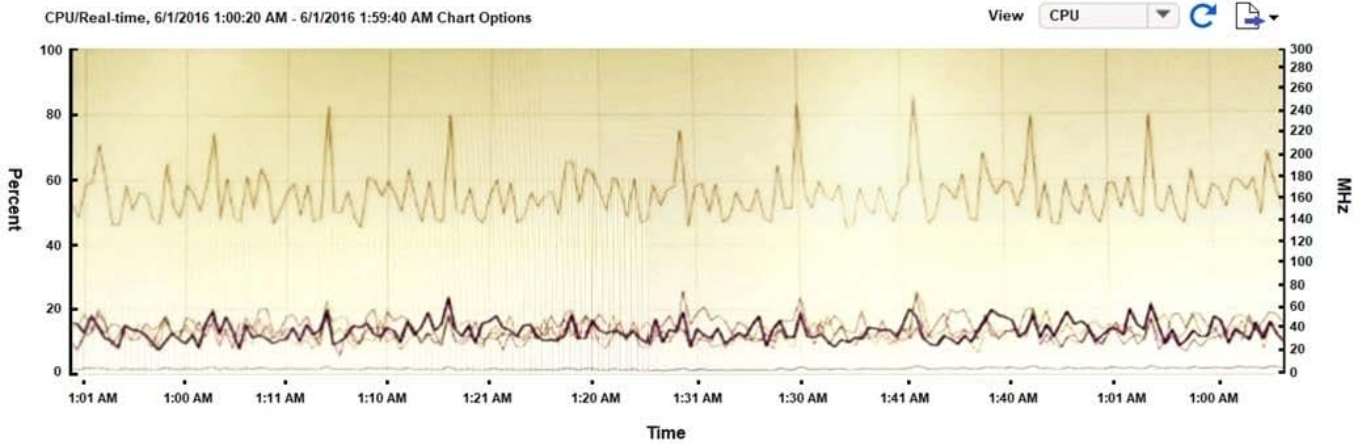
Reference: <https://www.alliedtelesis.com/en/documents/vrrp-feature-overview-and-configuration-guide>

---

**QUESTION 11**

Refer to the exhibit.





Performance Chart Legend

Key	Object	Measurement	Rollup	Units	Latest	Maximum	Minimum	Average
	AVAYA SMGR 7.0 POS Tea...	Usage	Average	Percent	1.45	2.48	1.3	1,594
1		Usage in MHz	Average	MHz	30	71	16	38,397
	AVAYA SMGR 7.0 POS Tea...	Usage in MHz	Average	MHz	151	257	135	156,509
0		Usage in MHz	Average	MHz	40	78	21	40,844
3		Usage in MHz	Average	MHz	38	77	19	38,335
2		Usage in MHz	Average	MHz	35	71	22	39,285

Why is the usage measurement of CPU2 (in Purple) shown in the chart highlighted in the table?

- A. Because the CPU2 has been nominated as the primary CPU in this Virtual Machine.
- B. Because the CPU2 has been highlighted with an active alarm.
- C. Because the CPU2 usage is closest to the average usage of all the CPUs.
- D. Because the CPU2 has been selected in the table under the chart.

Correct Answer: D

**QUESTION 12**

After implementing a new ACP 4200 solution, warnings about high temperatures on one of the host servers are reported by the Avaya Orchestrator.

To verify the temperature, fan speeds, and general hardware health of the HP Servers in the ACP 4200, which third party management tool can be used?

- A. Nimble storage web interface
- B. ESXi server client
- C. HP iLO web interface
- D. vSphere Web Client

Correct Answer: C

**QUESTION 13**

Which statement about the factory default configuration of the Avaya Session Border Controller for Enterprise (ASBCE) in ACP 4200 is true?

- A. The A1 LAN interface of the SBC is connected to the Application 3 VLAN of the ACP 4200.
- B. The A1 LAN interface of the SBC is connected to the Application 1 VLAN of the ACP 4200.
- C. The B1 LAN interface of the SBC is connected to the Application 2 VLAN of the ACP 4200.
- D. The M1 LAN interface of the SBC is connected to the Application 3 VLAN of the ACP 4200.

Correct Answer: A

---

**QUESTION 14**

Which statement describes a feature of VMware HA?

- A. It adds VPFM as a SNMP management server.
- B. It detects host failures and starts applications on other hosts in the cluster.
- C. It monitors the memory and CPU load on the host servers and balances them by moving VMs between the hosts.
- D. It moves a running VM from one host to another.

Correct Answer: B

Reference: [https://www.vmware.com/pdf/vmware\\_ha\\_wp.pdf](https://www.vmware.com/pdf/vmware_ha_wp.pdf)

---

**QUESTION 15**

Refer to the exhibit.

	A	B	C	D	E	F	G	H	I
	Build Code	Assembled Units	From Device RMU/Port	Connects to Unit	To Switch RMU/Port				
2									
1452	2D E3 S G/GS	Gateway - 1	E5	VSP4K1	P1	1 - P1	G4501 - E5	10	Gray
1454	2D E3 S G/GS	VSP 4800 - 2	P3	VSP4K1	P3	1 - P3	4k2 - P3	10	Gray
1455	2D E3 S G/GS	VSP 4800 - 2	P4	VSP4K1	P4	1 - P4	4k2 - P4	10	Gray
1456	2D E3 S G/GS	VSP 4800 - 2	P5	VSP4K1	P5	1 - P5	4k2 - P5	10	Gray
1457	2D E3 S G/GS	VSP 4800 - 2	P6	VSP4K1	P6	1 - P6	4k2 - P6	10	Gray
1458	2D E3 S G/GS	VSP 4800 - 2	P7	VSP4K1	P7	1 - P7	4k2 - P7	10	Gray
1459	2D E3 S G/GS	VSP 4800 - 2	P8	VSP4K1	P8	1 - P8	4k2 - P8	10	Gray
1460	2D E3 S G/GS	VSP 4800 - 2	P6	VSP4K1	P9	1 - P9	4k2 - P9	10	Gray
1461	2D E3 S G/GS	VSP 4800 - 2	P10	VSP4K1	P10	1 - P10	4k2 - P10	10	Gray
1462	2D E3 S G/GS	Server ACR - 1	N2	VSP4K1	P18	1 - P18	SVR01 - N2	15	Gray
1463	2D E3 S G/GS	Server ACR - 2	N2	VSP4K1	P19	1 - P19	SVR02 - N2	15	Gray
1469	2D E3 S G/GS	Server ACR - 1	N0	VSP4K1	P26	1 - P26	SVR01 - N0	15	Black
1470	2D E3 S G/GS	Server ACR - 2	N0	VSP4K1	P27	1 - P27	SVR02 - N0	15	Black
1476	2D E3 S G/GS	Server ACR - 1	IMM	VSP4K1	P35	1 - P35	SVR01 - IMM	15	Black
1482	2D E3 S G/GS	EMC Storage	SPA LAN	VSP4K1	P43	1 - P43	VNX - SPA LAN	15	Black
1485	2D E3 S G/GS	EMC Storage	SPA P0	VSP4K1	P50	1 - P50	VNX - SPA P0	5M	Aqua
1486	2D E3 S G/GS	Gateway - 1	E6	VSP4K2	P1	2 - P1	G4501 - E6	10	Gray
1488	2D E3 S G/GS	VSP 4800 - 1	P3	VSP4K2	P3	2 - P3	4k1 - P3	10	Gray
1489	2D E3 S G/GS	VSP 4800 - 1	P4	VSP4K2	P4	2 - P4	4k1 - P4	10	Gray
◀ ▶ ... <b>Switch Wiring</b> Power Cord Wiring Serial Numbers Software Versions Licenses Calc Customer Questionnaire Network Data									

An Administrator notices that a Service Status Warning is being received by Avaya Orchestrator indicating that port 27 on VSP 4850-1 is down.

Based on the contents of the Customer and Network Lifecycle Workbook in the exhibit, which equipment is connected to this port?

- A. VSP4K1, port 27
- B. Server/ACR-2, Interface NO
- C. Server/ACR-1, Interface NO
- D. VSP4K1, Port 26

Correct Answer: A