

830-01^{Q&As}

RCPE Certified Professional WAN Optimization

Pass Riverbed 830-01 Exam with 100% Guarantee

Free Download Real Questions & Answers **PDF** and **VCE** file from:

<https://www.pass2lead.com/830-01.html>

100% Passing Guarantee
100% Money Back Assurance

Following Questions and Answers are all new published by Riverbed
Official Exam Center

-  **Instant Download** After Purchase
-  **100% Money Back** Guarantee
-  **365 Days** Free Update
-  **800,000+** Satisfied Customers



QUESTION 1

At the data center, two SteelHeads are deployed in parallel, configured with connection forwarding. They are both actively optimizing connections via inpath0_0 and the customer requires that optimization continues in the event of an appliance failure. Which features should be configured to provide the customer with optimization if an appliance fails? (Choose two.)

- A. no interface inpath0_0 fail-to-bypass enable
- B. interface inpath0_0 fail-to-bypass enable w-failure
- C. No in-path neighbor allow-failure
- D. In-path neighbor allow-failure
- E. no asymmetric-route-detect enable

Correct Answer: D

QUESTION 2

What methods can the CMC appliance use to provide notification of CMC system events? (Select 3)

- A. Email
- B. RADIUS
- C. SNMP traps
- D. Syslog

Correct Answer: ACD

QUESTION 3

Branch office users live streaming video URL fragment requests are not optimized even though Microsoft Silverlight stream splitting is enabled. What could be the causing this? (Select 3)

- A. The client-side Steelhead appliance optimization service wasn't restarted.
- B. HTTP optimization is disabled on the client-side Steelhead appliance.
- C. The server-side Steelhead appliance optimization service wasn't restarted.
- D. HTTP optimization is disabled on the server-side Steelhead appliance.

Correct Answer: ABD

QUESTION 4

What is the default In-path rule on an Interceptor appliance?

- A. Optimize All
- B. Pass-through All
- C. Auto All
- D. Redirect All

Correct Answer: D

QUESTION 5

You have a firewall between your clients and servers with a SteelHead deployed on the trunk link connected between them. The firewall must see all traffic on the original client and server IP address and VLAN IDs. What is required to support this?

- A. Full transparency and simplified routing all
- B. Correct addressing and simplified routing all
- C. Full transparency with probe-caching enabled
- D. Full transparency and simplified routing dest-source
- E. Correct addressing and simplified routing dest-source

Correct Answer: A

QUESTION 6

A Steelhead Mobile client can be configured to operate in visible or invisible mode (show client in system tray parameter). What part of the configuration is this setting included?

- A. Acceleration policy
- B. Authentication policy
- C. Endpoint policy
- D. Port labels

Correct Answer: C

QUESTION 7

In the Interceptor appliance version 3.0 and later the command to enable cluster failover is:

- A. failover-peer enable.

- B. Interceptor appliance communication allow-failure enable.
- C. Interceptor appliance failover enable.
- D. Enable interceptor appliance peer failover.

Correct Answer: B

QUESTION 8

In order to reset the admin password that has been lost, the procedure can be done via what type of connection to a Steelhead appliance?

- A. SSH over Primary interface IP
- B. SSH over AUX interface IP
- C. SSH over in-path interface IP
- D. Serial cable connection
- E. Password recovery can not be done on a Steelhead appliance

Correct Answer: D

QUESTION 9

In a Steelhead appliance deployment, the customer decides to use Full Transparency and block all incoming/outgoing TCP connections on port 7800 on their firewall. However, they are finding all TCP connections are passing through the Steelhead appliances (even ones that should be optimized via the in-path rule set). If Full Transparency uses the original IP addresses and TCP ports for inner connections, what is the most likely cause of all TCP connections passing through the Steelhead appliances?

- A. The OOB (out-of-band) splice connection cannot be made
- B. The user connections (if using the same ephemeral TCP port) are blocking each other, since the Steelhead appliance had to make all of these sequentially
- C. Full Transparency is only supported on Steelhead 3U appliances
- D. All connections are being blocked by the firewall

Correct Answer: A

QUESTION 10

Which of the following is true about fetching Steelhead appliance's configurations from a CMC appliance?

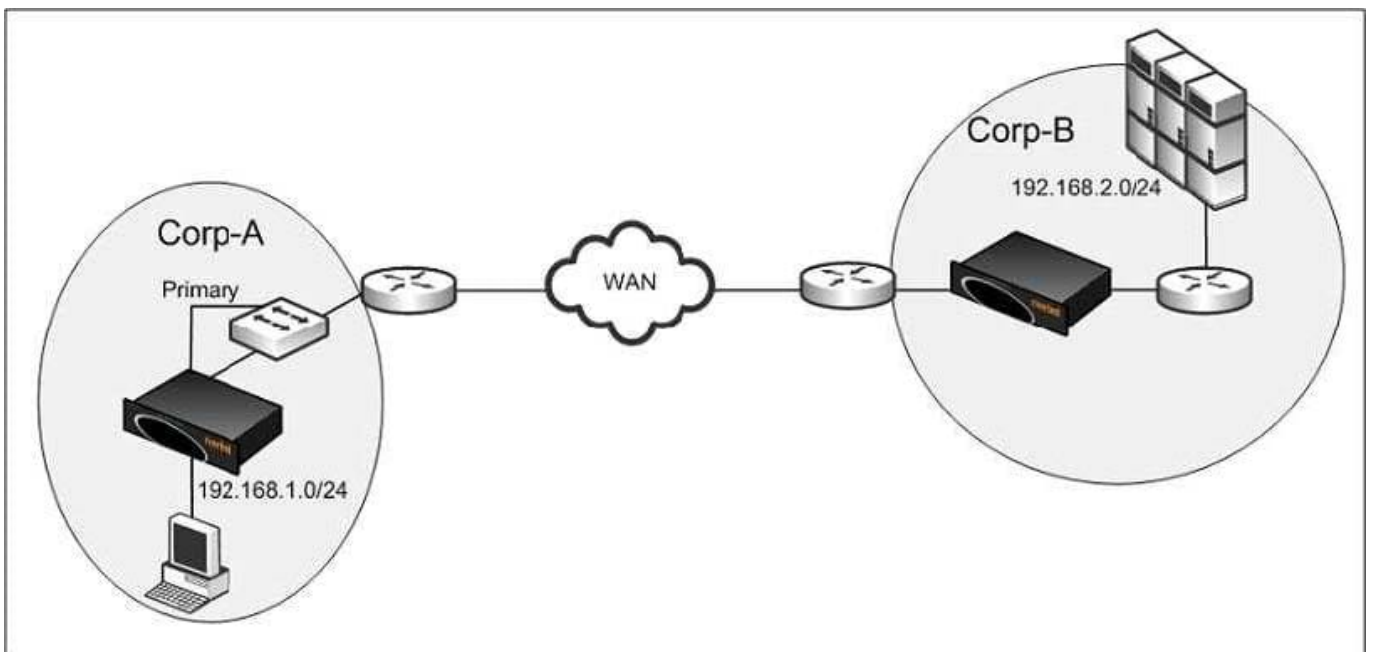
- A. Fetched configurations are automatically saved as groups, which can be managed and applied to appliances and appliance policies

- B. Configurations cannot be fetched from the CMC appliance, they must be pushed
- C. Fetched configurations are automatically saved as policies, which can be managed and applied to appliances and appliance groups
- D. Fetched configurations are saved as system settings, which can be managed and applied to appliances and appliance groups

Correct Answer: C

QUESTION 11

Refer to the exhibit.



You configured CIFS prepopulation at Corp-A but it is not working. What is likely the cause of the issue?

- A. CIFS prepopulation requires WCCP
- B. Primary interface needs to be on a different subnet
- C. CIFS prepopulation requires a fixed-target rule
- D. The Primary interface needs to be on the LAN side of the Steelhead appliance
- E. CIFS prepopulation requires SMBv2

Correct Answer: D

QUESTION 12

Consider a SteelHead deployment with SMB optimization and SMB signing enabled on all SteelHeads. The client is configured to have signing enabled and the server has signing disabled. What will happen to SMB connections between these two hosts?

- A. The connection will be unsigned but allowed. The SteelHead does not need to have SMB signing enabled to accommodate this connection.
- B. The connection will not be allowed, as signing is enabled on the client and disabled on the server.
- C. The connection will be allowed and will be signed as the client determines whether SMB signing is used or not.
- D. The connection will be allowed, and will be signed between the client and client-side SteelHead.

Correct Answer: A

QUESTION 13

An unwanted Steelhead appliance appears on the current connections list of one of your Steelhead appliances. How can you stop inbound connections from this unknown appliance from optimizing with your Steelhead appliances?

- A. Create new peering rule(s) on your Steelhead appliances
- B. Create new in-path rule(s) on your Steelhead appliance
- C. Create IPsec tunnels between all of your Steelhead appliances
- D. Reload all of your Steelhead appliances
- E. Reload only the data center Steelhead appliance

Correct Answer: A

QUESTION 14

When upgrading a Virtual Steelhead appliance, what steps can be taken to preserve the existing datastore?

- A. When upgrading a Virtual Steelhead appliance, it is not possible to preserve the existing datastore
- B. Detach the existing datastore and re-attach to the new Virtual Steelhead appliance
- C. Run vMotion and move the datastore to a different ESX host before performing the upgrade and then bring it back afterwards
- D. Move the existing datastore to an NFS share and move it back after the upgrade

Correct Answer: A

QUESTION 15

A Steelhead administrator has recently decided to implement Steelhead Mobile clients on some of his company employees PCs. Most of the PCs only have 5 GB of disk space available. What would you do in this case? (Select 2)

- A. Nothing can be done. The Steelhead Mobile client needs at least 10 GB of hard drive space.
- B. Change the data store settings on the Steelhead Mobile Controller's policy and choose a smaller size for the data

store size.

C. Change the data store settings on the data center Steelhead appliance's policy and choose a smaller size for the data store size.

D. Create a new endpoint policy with a smaller data store size.

Correct Answer: BD

[830-01 Practice Test](#)

[830-01 Exam Questions](#)

[830-01 Braindumps](#)