

# 9A0-389<sup>Q&As</sup>

Adobe Campaign Developer

## Pass Adobe 9A0-389 Exam with 100% Guarantee

Free Download Real Questions & Answers **PDF** and **VCE** file from:

<https://www.pass2lead.com/9a0-389.html>

100% Passing Guarantee  
100% Money Back Assurance

Following Questions and Answers are all new published by Adobe  
Official Exam Center

-  **Instant Download** After Purchase
-  **100% Money Back** Guarantee
-  **365 Days** Free Update
-  **800,000+** Satisfied Customers



**QUESTION 1**

How can you prevent a user from inputting a recipient without an email address?

- A. By adding a element in the form.
- B. By adding a "dataPolicy=\\'mandatory\\'" attribute to the schema.
- C. By adding a "mandatory=\\'true\\'" attribute to the form.
- D. By adding a trigger in the database.

Correct Answer: C

---

**QUESTION 2**

Workflows are NOT executing anymore. Which module is the root cause for this problem?

- A. runwf
- B. mta
- C. watchdog
- D. wfserver

Correct Answer: A

Reference: <https://docs.campaign.adobe.com/doc/archives/en/610/workflow-v6.1-en.pdf>

---

**QUESTION 3**

The header of the email contains these words:

E-mail not displayed correctly? View the Web version

How would you implement the link?

- A. Using a link to a responsive version of the email.
- B. using a link to the customer\\'s website.
- C. Using the mirror page personalization block.
- D. Using the optout personalization block.

Correct Answer: A

---

**QUESTION 4**

What is the purpose of the "Taken into account if" expression on a predefined filter?

- A. The "Taken into account if" expression provides the marketing user with a drop-down to select which conditions to apply.
- B. The conditions on which the "Taken into account if" expression is applied will only be used if the "Taken into account if" expression is true.
- C. The "Taken into account if" expression is used to only display an input when the expression is true.
- D. The "Taken into account if" expression can be used to format the filter result

Correct Answer: D

Reference: <https://docs.campaign.adobe.com/doc/archives/en/610/platform-v6.1-en.pdf> (p.170)

**QUESTION 5**

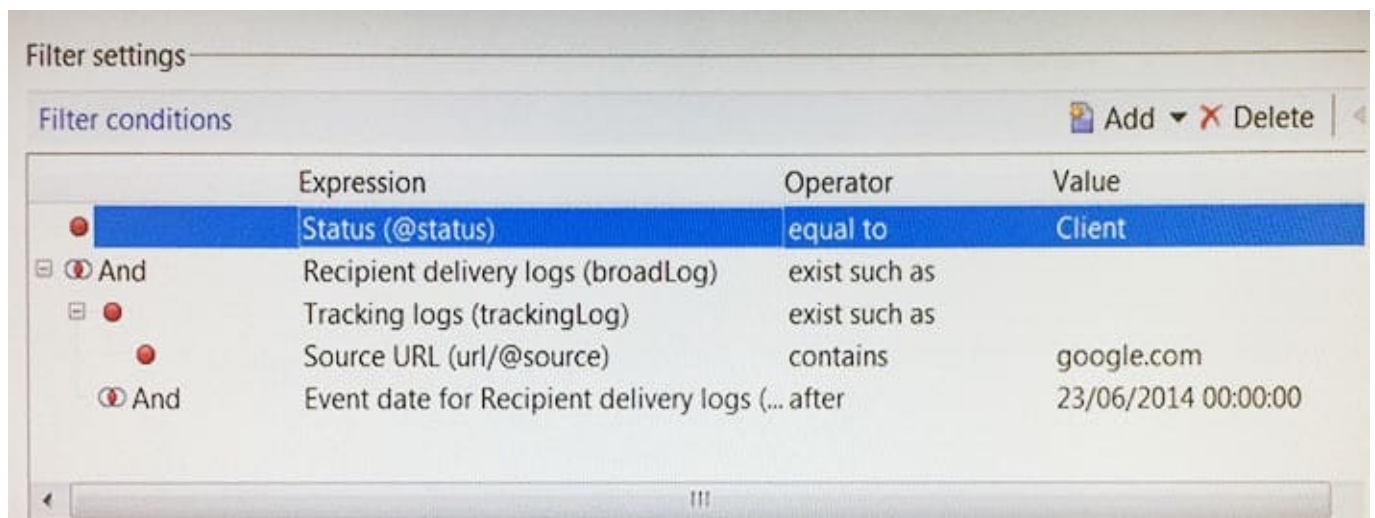
You want to create a landing page that has a width of exactly 800 pixels. What should you do?

- A. Create an HTML node within the page and specify the page width.
- B. Open the page properties and set the "page width" attribute.
- C. Open the rendering and add a CSS directive to overload the page width.
- D. Create a JavaScript activity and set the page width attribute within the context.

Correct Answer: B

**QUESTION 6**

Which two parts of this query could potentially cause performance problems? (Choose two.)



- A. The "equal to" operator is not efficient.

- B. The "url" is a table with high volumes.
- C. The "tracking log" is a table with high volumes.
- D. The "exist such as" operator is not efficient.

Correct Answer: CD

---

#### QUESTION 7

How should you organize the creation of the following tasks?

- A. Campaign – Program – Plan - Delivery
- B. Delivery – Campaign – Plan – Program
- C. Plan – Program – Campaign – Delivery
- D. Program – Delivery – Plan – Campaign

Correct Answer: A

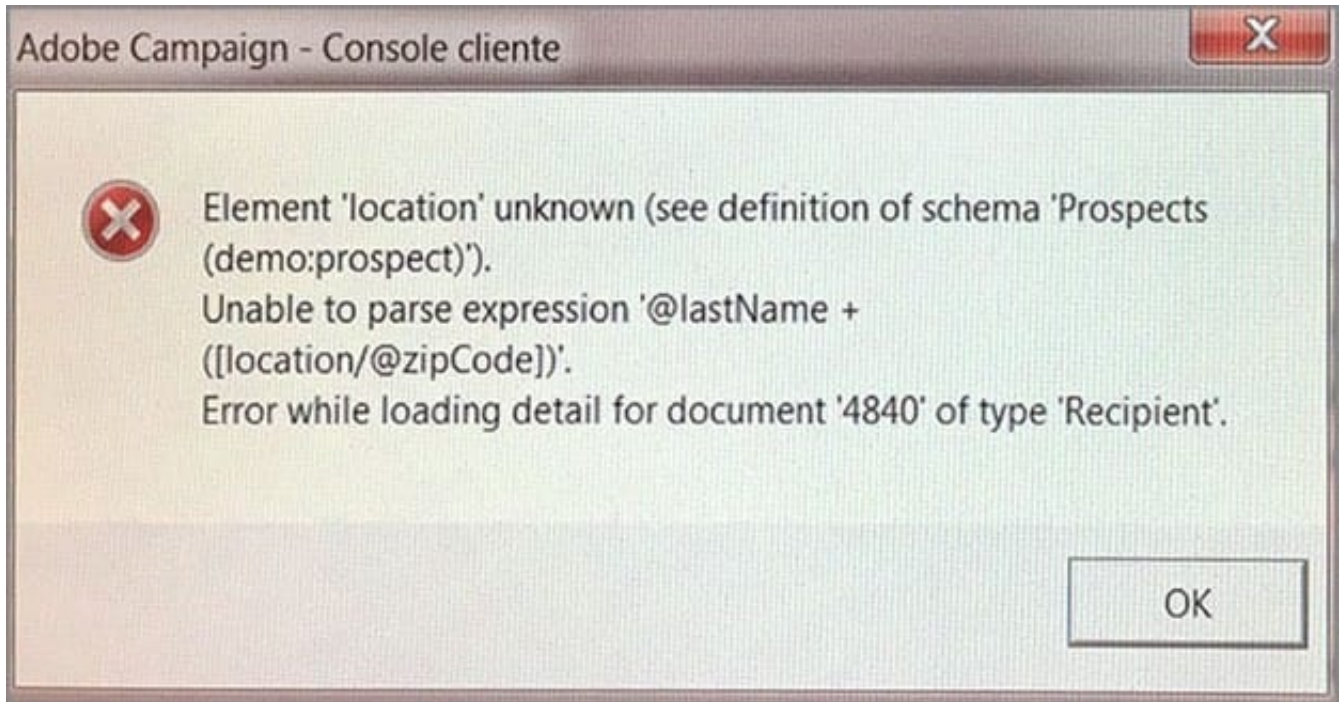
Reference: [https://docs.campaign.adobe.com/doc/AC6.1/en/CMP\\_Marketing\\_campaigns\\_Overview.html](https://docs.campaign.adobe.com/doc/AC6.1/en/CMP_Marketing_campaigns_Overview.html)

---

#### QUESTION 8

A new schema is defined. This error appears when the schema is saved. What is the reason for this error?

```
<srcSchema name="prospect namespace="demo"/>
  <element name="prospect">
    <key name="email">
      <keyfield xpath="@email"/>
    </key>
    <compute-string expr="@lastName + [location/@zipCode]"/>
    <attribute length="50" name="email" type="string"/>
    <attribute length="20" name="lastName" type="string"/>
    <attribute length="20" name="firstName" type="string"/>
    <attribute name="zipCode" type="short"/>
  </element>
</srcSchema>
```



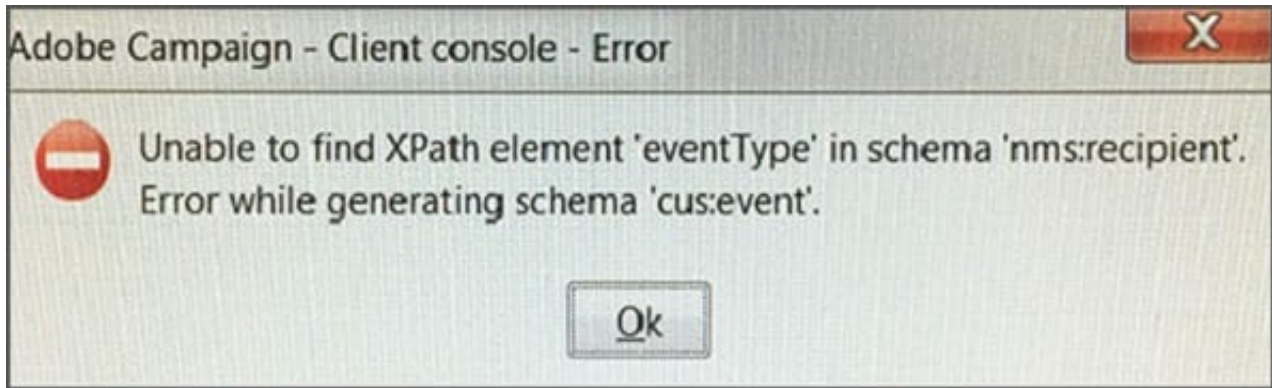
- A. The location element is incorrect.
- B. The compute-string is incorrect.
- C. The type of the zip code attribute is incorrect.
- D. The prospect does not have a zip code.

Correct Answer: C

### QUESTION 9

A new schema is defined. An error appears, as shown below, when the schema is saved. What could be the cause of the error?

```
<srcSchema namespace="cus" name="event">  
  
  <enumeration basetype="short" default="" name="eventType">  
    <value label="Webinar" name="web" value="1"/>  
    <value label="Trade show" name="trade" value="2"/>  
  </enumeration>  
  
  <element label="Marketing Events" labelSingular="Event" name="event">  
    <element name="recipient" target="nms:recipient" type="link"/>  
    <attribute name="eventType" enum="nms:recipient:eventType" label="Type of event" type="long"/>  
    <attribute type="datetime" name="eventDate" label="Date of event"/>  
  </element>  
  
</srcSchema>
```



- A. The xpath to the enumeration is incorrect.
- B. The enumeration definition is incorrect.
- C. The recipient schema is incorrect.
- D. The eventType element is incorrect.

Correct Answer: D

#### QUESTION 10

Which is required when creating a new Plan?

- A. Description
- B. Parent
- C. Start and end date
- D. Nature

Correct Answer: D

Reference: [https://docs.campaign.adobe.com/doc/AC6.1/en/CMP\\_Marketing\\_campaigns\\_Setting\\_up\\_marketing\\_campaigns.html](https://docs.campaign.adobe.com/doc/AC6.1/en/CMP_Marketing_campaigns_Setting_up_marketing_campaigns.html)

[Latest 9A0-389 Dumps](#)

[9A0-389 PDF Dumps](#)

[9A0-389 Study Guide](#)