

9L0-422^{Q&As}

OS X Support Essentials 10.10

Pass Apple 9L0-422 Exam with 100% Guarantee

Free Download Real Questions & Answers **PDF** and **VCE** file from:

<https://www.pass2lead.com/9l0-422.html>

100% Passing Guarantee
100% Money Back Assurance

Following Questions and Answers are all new published by Apple
Official Exam Center

- ⚙️ **Instant Download** After Purchase
- ⚙️ **100% Money Back** Guarantee
- ⚙️ **365 Days** Free Update
- ⚙️ **800,000+** Satisfied Customers



QUESTION 1

In a default OS X configuration, you want to configure OS X to delete ZIP files after they're expanded in the Finder. Where can you make that change?

- A. Finder Preferences
- B. System Preferences
- C. Disk Utility Preferences
- D. Archive Utility Preferences

Correct Answer: D

QUESTION 2

Which tool can you use to search log files?

- A. Archive Utility
- B. Activity Monitor
- C. Console
- D. Network Utility

Correct Answer: C

QUESTION 3

You want to make documents available across your Mac and iOS devices. In the screenshot, click an icon of the preference pane where you can enable this feature.

Hot Area:



Correct Answer:



QUESTION 4

Which statement best describes how Time Machine stores files from an OS X computer when backing up to an external hard drive connected via FireWire?

- A. Each file is rewritten to the external disk during each backup.
- B. Each file is saved to the external disk once. File changes are stored in a database on the external disk.
- C. Each file is saved to the external disk once. Files that don't change between backups are represented by symbolic links to save space.
- D. Each file is saved to the external disk once. Files that don't change between backups are represented by hard links to save space.

Correct Answer: D

QUESTION 5

Which of these are available from the Utilities menu when you start up from the OS X Recovery partition? (Select

TWO.)

- A. Network Utility
- B. AirPort Utility
- C. Activity Monitor
- D. Migration Assistant
- E. Terminal

Correct Answer: AE

QUESTION 6

On a Mac, you connect to a server and then open System Preferences. In the screenshot, click the icon of the preference pane where you configure OS X to connect to the same server automatically each time you log in.

Hot Area:



Correct Answer:



QUESTION 7

How can you display the contents of a hidden folder on a mounted volume in the Finder?

- A. From the View menu, choose "Show hidden items."
- B. From the Finder menu, choose Preferences and select "Show hidden items."
- C. From the Go menu, choose "Go to Folder," enter the path to the hidden folder, and click Go.
- D. Select the volume icon and choose "Show hidden items" from the Action menu.

Correct Answer: C

QUESTION 8

Which of these files will Time Machine, by default, NOT back up?

- A. Any file in the Trash

- B. A Time Machine preference .plist file
- C. An encrypted file
- D. A file that Time Machine identifies as conflicting with a file that was previously backed up

Correct Answer: A

QUESTION 9

You downloaded an app using Safari. When you try to open the app, you see a message that says the application is damaged and cannot be opened, and that you should move it to the Trash.

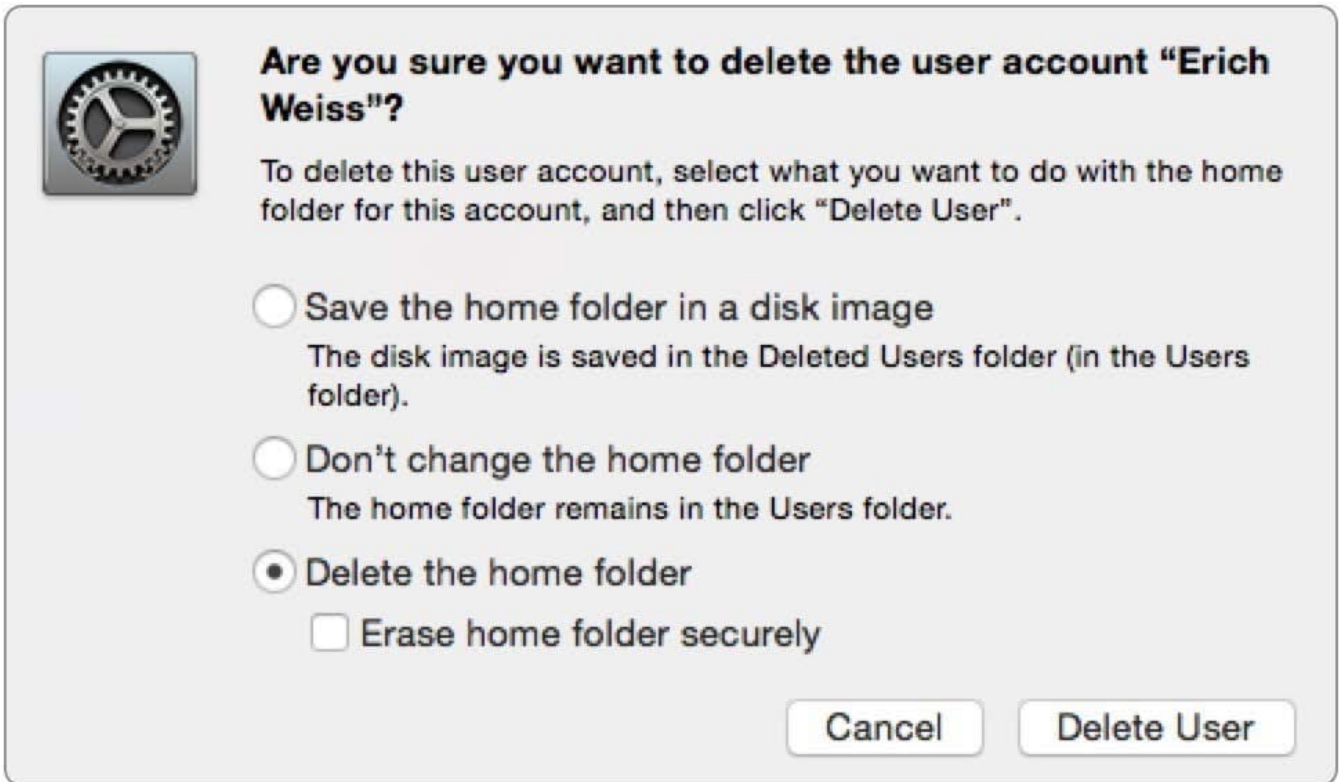
Which is a possible explanation?

- A. Gatekeeper has recognized that the app was altered after it was signed.
- B. The quarantine system downloaded the app into a sandbox that is corrupted.
- C. The app was signed using a certificate from an unknown authority.
- D. The certificate needed to decrypt this app can't be found in the keychain.

Correct Answer: A

QUESTION 10

Review the screenshot, then answer the question below.



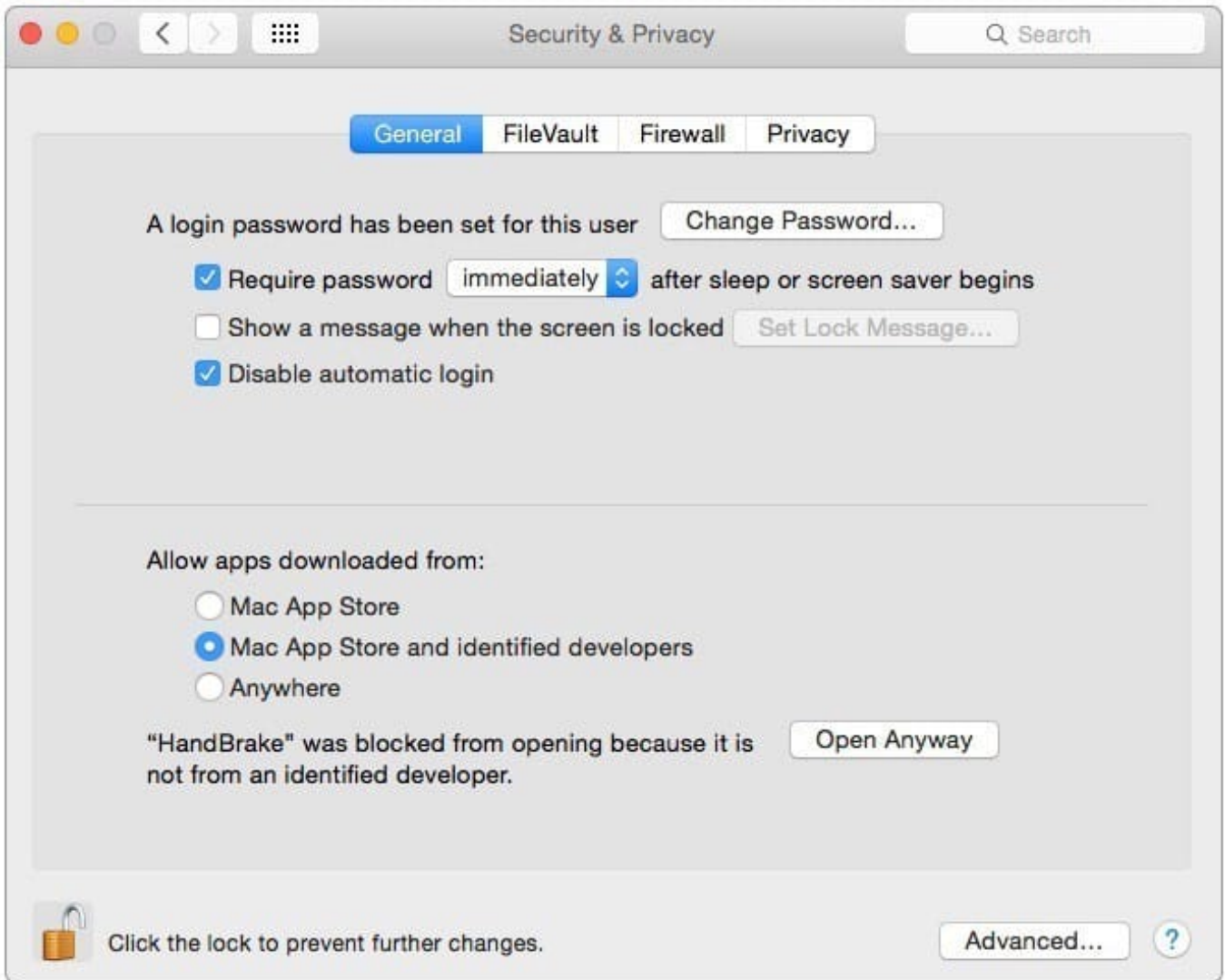
If you click Delete User in the dialog shown above, what will happen to Erich's home folder?

- A. It will be renamed Deleted compressed and encrypted, and archived in Time Machine.
- B. It will be moved to the Trash.
- C. It will be deleted immediately, without being moved to the Trash.
- D. It will be renamed Deleted, and the folder's permissions will be changed to allow administrator user access only.

Correct Answer: C

QUESTION 11

Review the screenshot of a system configuration, then answer the question below.



Your Mac is configured as shown in the screenshot. Using Safari, you download an app from an unidentified developer and double-click the app icon. What happens?

- A. The app opens without an alert message.
- B. The app opens after an alert message that the app is from an unidentified developer.
- C. An alert message asks whether you want to open this app from an unidentified developer.
- D. The app doesn't open, and an alert message tells you that the app is from an unidentified developer.

Correct Answer: D

QUESTION 12

Review the screenshot, then answer the question below.



You connect a Mac OS Extended (Journaled)-formatted FireWire disk to a Mac configured as shown in the screenshot. What will happen the next time a standard user attempts to mount the hard disk?

- A. The disk will mount, and the user will be able to read, modify, and delete any file on the disk.
- B. The disk will mount, and the user will be able to read any file on the disk. The user will be required to enter an administrator password to modify or delete files on the disk.
- C. The user will be required to enter an administrator password to mount the disk. After the disk is mounted, the user will be able to read, modify, and delete any file on the disk.
- D. The user will be required to enter an administrator password to mount the disk. After the disk is mounted, the user will be able to read any file on the disk but be required to reenter an administrator password to modify or delete files.

Correct Answer: A

QUESTION 13

When a user logs in, which task is NOT performed by loginwindow or launchd processes?

- A. Launch Dock and Finder
- B. Launch Login Items specified in Users and Groups preferences
- C. Scan for new peripheral devices and register them with Launch Services
- D. Configure input device and system settings according to System Preferences

Correct Answer: B

QUESTION 14

When Time Machine backed up your file yesterday, the file was 5MB. Now that you've changed the file, it's 6MB.

What does Time Machine do with the file at the next backup?

- A. Time Machine copies the 6MB file to the backup drive and deletes the original backup copy of the file from the backup drive.
- B. Time Machine copies the 6MB file to the backup drive and keeps both the new backup file and the original backup file on the backup drive.
- C. Time Machine identifies the 1MB of file changes, copies those changes to a new file on the backup drive, and keeps

both the new backup file and the original backup file.

D. Time Machine identifies the 1MB of file changes, copies those changes to a new file on the backup drive, creates a 500K parity file, and keeps all three files: the two new files representing the 1MB of file changes and the original backup file.

Correct Answer: C

QUESTION 15

In OS X, you must authenticate as an administrator before you can install apps from the Mac App Store.

- A. True
- B. False

Correct Answer: A

[Latest 9L0-422 Dumps](#)

[9L0-422 VCE Dumps](#)

[9L0-422 Study Guide](#)