

BH0-004^{Q&As}

ISEB ISTQB Certificate in Software Testing

Pass ISEB BH0-004 Exam with 100% Guarantee

Free Download Real Questions & Answers **PDF** and **VCE** file from:

<https://www.pass2lead.com/bh0-004.html>

100% Passing Guarantee
100% Money Back Assurance

Following Questions and Answers are all new published by ISEB
Official Exam Center

- ⚙️ **Instant Download** After Purchase
- ⚙️ **100% Money Back** Guarantee
- ⚙️ **365 Days** Free Update
- ⚙️ **800,000+** Satisfied Customers



QUESTION 1

What is the KEY difference between preventative and reactive approaches to testing?

- A. Preventative tests and reactive tests are designed as early as possible.
- B. Preventative tests are designed early; reactive tests are designed after the software has been produced.
- C. Preventative testing is always analytical; reactive testing is always heuristic.
- D. Preventative tests are designed after the software has been produced; reactive tests are designed early in response to review comments.

Correct Answer: B

QUESTION 2

Which of the following is correct?

- A. Impact analysis assesses the effect on the system of a defect found in regression testing.
- B. Impact analysis assesses the effect of a new person joining the regression test team.
- C. Impact analysis assesses whether or not a defect found in regression testing has been fixed correctly.
- D. Impact analysis assesses the effect of a change to the system to determine how much regression testing to do.

Correct Answer: D

QUESTION 3

Which of the following activities should be performed during the selection and implementation of a testing tool? i) Investigate the organisation test process.

- i) Investigate the organisation's test process.
- ii) Conduct a proof of concept.
- iii) Implement the selected tool on a project behind schedule to save time.
- iv) Identify coaching and mentoring requirements for the use of the selected tool.

- A. i, ii, iii.
- B. ii, iii, iv.
- C. i, iii, iv.
- D. i, ii, iv.

Correct Answer: D

QUESTION 4

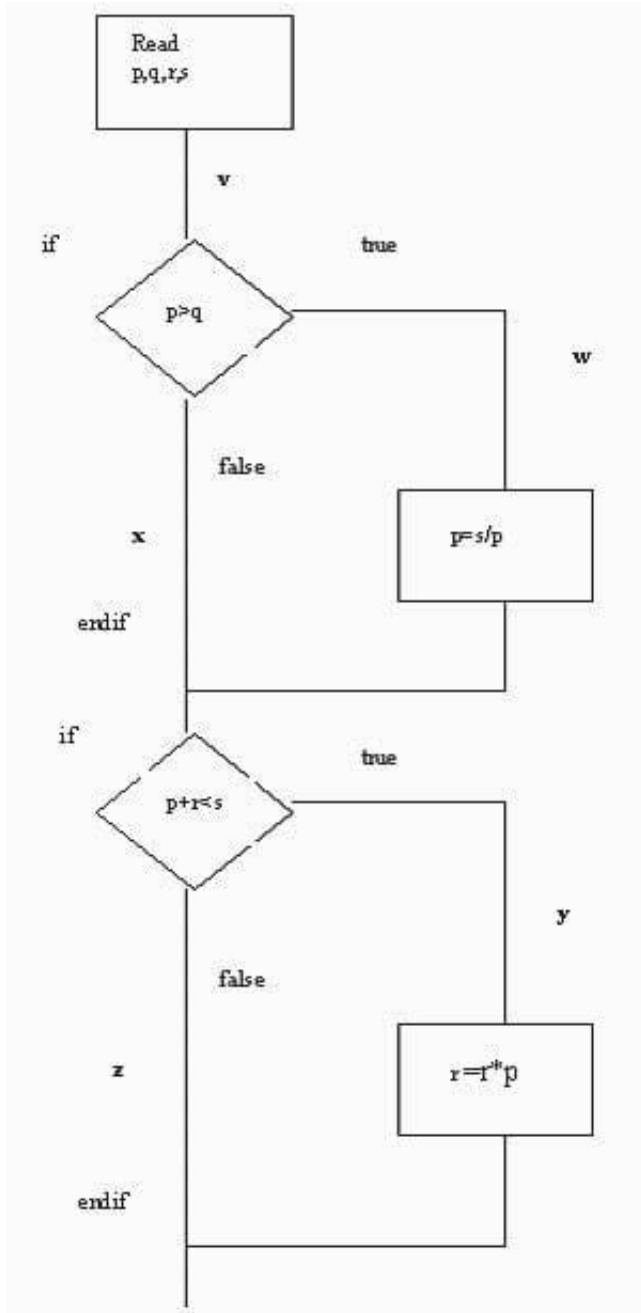
Which activity in the fundamental test process creates test suites for efficient test execution?

- A. Implementation and execution.
- B. Planning and control.
- C. Analysis and design.
- D. Test closure.

Correct Answer: A

QUESTION 5

The above diagram represents the following paths through the code.



- A. vwy
- B. vwz
- C. vxy
- D. vxz

What is the MINIMUM combination of paths required to provide full statement coverage?

- A. A
- B. ABD
- C. ABCD

D. ACD

Correct Answer: A

QUESTION 6

Which of the following benefits are MOST likely to be achieved by using test tools?

- i) Easy to access information about tests and testing.
- ii) Reduced maintenance of testware.
- iii) Easy and cheap to implement.
- iv) Greater consistency of tests.

- A. ii and iv
- B. ii and iii
- C. i and iv
- D. i and iii

Correct Answer: C

QUESTION 7

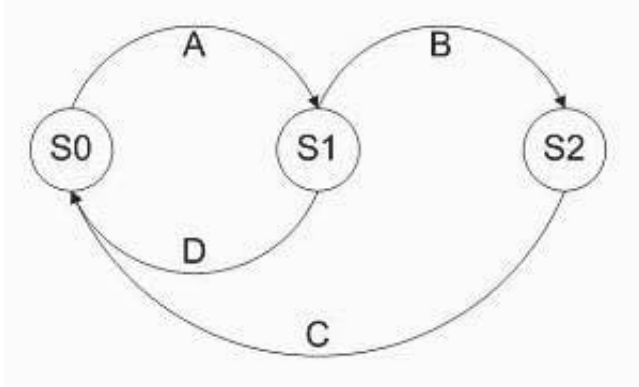
Which of the following is a purpose of the review lanning phase?

- A. Log defects.
- B. Explain the documents to the participants.
- C. Gather metrics.
- D. Allocate the individual roles.

Correct Answer: D

QUESTION 8

Given the following state transition table Which of the test cases below will cover the following series of state transitions? S1 S0 S1 S2 S0



A. D, A, B, C.

B. A, B, C, D.

C. D, A, B.

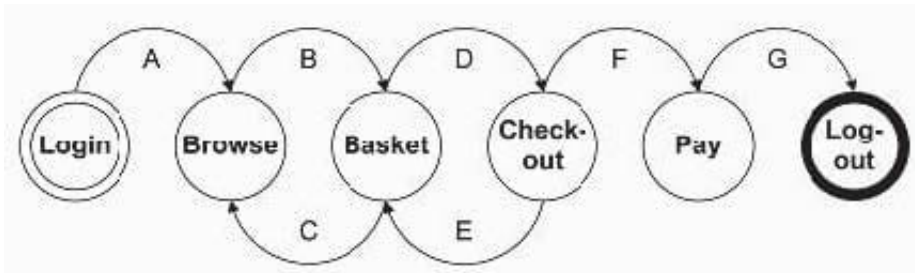
D. A, B, C.

Correct Answer: A

QUESTION 9

Given the following state transition diagram

Which of the following series of state transitions contains an INVALID transition which may indicate a fault in the system design?



A. Login Browse Basket Checkout Basket Checkout Pay Logout.

B. Login Browse Basket Checkout Pay Logout.

C. Login Browse Basket Checkout Basket Logout.

D. Login Browse Basket Browse Basket Checkout Pay Logout.

Correct Answer: C

QUESTION 10

Match the following terms and statements.

1.Decision Table Testing 2.Decision Testing 3.State Transition Testing 4.Exploratory Testing

A. Testing carried out within time boxes to achieve specific test objectives, possibly to complement structured testing.

B. A test technique used which may be used to verify different system responses, depending on current conditions or previous history.

C. A test technique which combines combinations of inputs that might not otherwise have been exercised during testing.

D. A form of control flow testing based on decision outcomes.

A. 1Y, 2Z, 3X, 4W.

B. 1X ,2W, 3Z, 4Y.

C. 1Z, 2X, 3W, 4Y.

D. 1Z, 2Y, 3X, 4W.

Correct Answer: A

[BH0-004 PDF Dumps](#)

[BH0-004 VCE Dumps](#)

[BH0-004 Exam Questions](#)