

E20-385^{Q&As}

Data Domain Specialist Exam for Implementation Engineers

Pass EMC E20-385 Exam with 100% Guarantee

Free Download Real Questions & Answers **PDF** and **VCE** file from:

<https://www.pass2lead.com/e20-385.html>

100% Passing Guarantee
100% Money Back Assurance

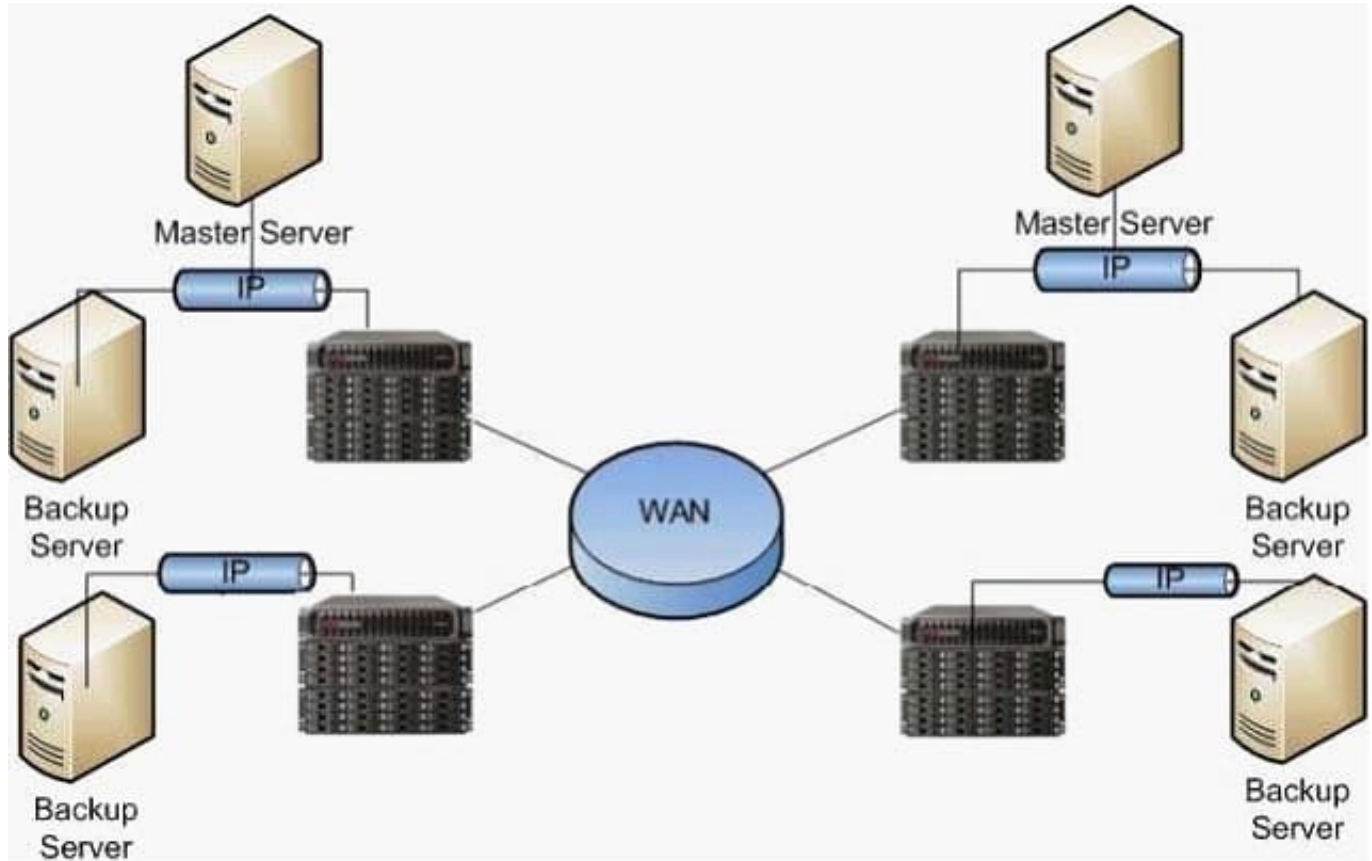
Following Questions and Answers are all new published by EMC
Official Exam Center

-  **Instant Download** After Purchase
-  **100% Money Back** Guarantee
-  **365 Days** Free Update
-  **800,000+** Satisfied Customers



QUESTION 1

An EMC Data Domain customer wants to replicate data between the four sites illustrated in the exhibit.



The customer has the option to use DD Boost or NFS with their backup software.

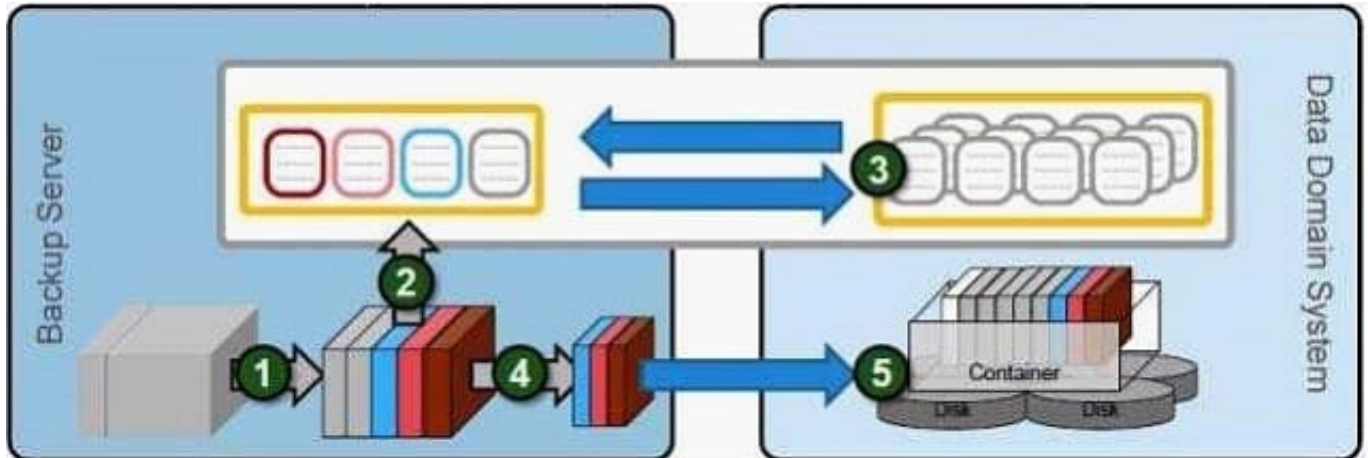
What is a key advantage of using DD Boost for backups in this environment instead of NFS?

- A. Catalog awareness of the replicas
- B. Ability to use virtual tape pools to manage replication
- C. Increases deduplication ratios
- D. Reduces the amount of data to replicate

Correct Answer: A

QUESTION 2

The exhibit illustrates an EMC Data Domain environment with DD Boost and DSP.



Which process is represented by Step 3?

- A. Filter
- B. Fingerprint
- C. Segment
- D. Compress

Correct Answer: A

QUESTION 3

A customer has enabled CIFS and configured the CIFS shares on an EMC Data Domain system to allow access through a Symantec NetBackup Media Server. What is a step that must be done on the Media Server to enable read/write access to the shared directory and configure the devices?

- A. Configure the NetBackup services to start as a user that has access to the share
- B. Configure a NetBackup disk pool to be used by the NetBackup devices
- C. Create a mapped network drive that reconnects when the NetBackup service is started
- D. Enable the DD Boost plugin on the NetBackup Media Server

Correct Answer: A

QUESTION 4

Which pieces of information are necessary to determine the capacity requirements of an EMC Data Domain system?

- A. Full backup size, backup frequency, anticipated deduplication ratios, and retention policy
- B. Backup window duration, backup frequency, retention policy, and number of backup tapes created weekly

C. Full backup size, recovery time objective, anticipated deduplication ratios, and retention policy

D. Backup window duration, recovery time objective, anticipated deduplication ratios, and frequency of data restores

Correct Answer: A

QUESTION 5

An organization currently writes backups to an EMC Data Domain system and then creates encrypted copies of their backups on tapes. These tapes are then shipped to a third-party offsite vault. They are now planning to deploy a second Data Domain system to a secure data center at their corporate headquarters as a replication target to replace the use of the offsite tapes. The two sites are connected through the Internet.

Where should encryption be applied on the Data Domain systems to ensure a similar level of data security as achieved by their current process?

A. Encrypt the replication context

B. Encrypt the data at rest

C. Encrypt the data at rest and the replication context

D. Encryption is not required

Correct Answer: A

QUESTION 6

When using a terminal emulation program for the initial configuration of an EMC Data Domain system, what is an accurate Flow Control setting?

A. DSR/DTR

B. XON/XOFF

C. RTS/CTS

D. None

Correct Answer: D

QUESTION 7

NetBackup has been configured to use an EMC Data Domain appliance as a VTL for the primary target storage unit.

Which multiplexing setting should be configured within the NetBackup storage unit to achieve optimal deduplication performance on the Data Domain?

- A. Disabled
- B. Unlimited
- C. 2
- D. 4

Correct Answer: A

QUESTION 8

A customer is looking for the following requirements to replicate data:

Entire /backup directory replicated

All user accounts and password are replicated

Full system data replication mirror

Which type of replication meets the customer's requirements?

- A. Collection
- B. Directory
- C. Pool
- D. Snapshot

Correct Answer: A

QUESTION 9

When implementing NFS with an EMC Data Domain system, why should hard mounts be used?

- A. Ensure availability of the server after reboots or outages
- B. Enable backups of individual mounts
- C. Ensure availability of mounts through other protocols
- D. Prevent non-administrators from accessing the mounts

Correct Answer: A

QUESTION 10

In an EMC Data Domain environment, which protocol is required for DD Boost?

- A. CIFS
- B. Fibre Channel
- C. TCP/IP
- D. NDMP

Correct Answer: C

QUESTION 11

A customer is running NFS backups with eight Symantec NetBackup Media Servers. The EMC Data Domain system is receiving data at 700 MB/s. What is a possible cause if the system is also writing to disk at 700 MB/s?

- A. Network bottlenecks
- B. Encrypted data streams
- C. Too many media servers
- D. Not enough connections

Correct Answer: B

QUESTION 12

Which benefit is provided by EMC Data Domain Stream-Informed Segment Layout (SISL) scaling architecture?

- A. Deduplication of data inline which eliminates the need to write duplicate data to disk
- B. Ability to quickly deduplicate data previously stored on the Data Domain system which allows faster ingest of data
- C. Ability to verify the data stored in the Data Domain file system for reliability
- D. Ability to transparently and automatically recover from disk read errors using RAID parity

Correct Answer: A

QUESTION 13

While implementing an EMC Data Domain system, the system is unable to join the Microsoft Active Directory domain. What is preventing the system from joining the domain?

- A. System time varies from AD server time by 310 seconds
- B. Backup user does not have operator privileges
- C. Unstable Fibre Channel connectivity to the AD server
- D. Kerberos tickets are 210 seconds old and stale

Correct Answer: A

QUESTION 14

An EMC NetWorker 8.0 SP1 administrator is tasked with setting up a VTL on their EMC Data Domain system. Which values should be used for the "Target sessions" and "Max sessions" parameters?

- A. Target Sessions = 0 Max Sessions = 4
- B. Target Sessions = 1 Max Sessions = 1
- C. Target Sessions = 1 Max Sessions = 6
- D. Target Sessions = 2 Max Sessions = 1

Correct Answer: C

QUESTION 15

Refer to the Exhibit.



When creating a second shelf set on an EMC Data Domain DD670, what are the two recommended SAS ports that should be used?

- A. 3a and 2a

B. 3a and 2b

C. 3b and 2a

D. 3b and 2b

Correct Answer: C

[Latest E20-385 Dumps](#)

[E20-385 VCE Dumps](#)

[E20-385 Braindumps](#)