

EX0-113^{Q&As}

TMap Next Foundation

Pass EXIN EX0-113 Exam with 100% Guarantee

Free Download Real Questions & Answers **PDF** and **VCE** file from:

<https://www.pass2lead.com/ex0-113.html>

100% Passing Guarantee
100% Money Back Assurance

Following Questions and Answers are all new published by EXIN
Official Exam Center

-  **Instant Download** After Purchase
-  **100% Money Back** Guarantee
-  **365 Days** Free Update
-  **800,000+** Satisfied Customers



QUESTION 1

Which defects can be detected more effectively with development tests than with system and/or acceptance tests?

- A. defects related to affectivity
- B. defects related to the database and/or the operating system
- C. defects related to the functional specifications
- D. defects related to performance

Correct Answer: B

QUESTION 2

What is the aim of the activity 'assessing the test basis'?

- A. To determine the risk of the various system components
- B. To select the most suitable test design techniques
- C. To determine whether the delivered system components can be tested in a useful manner
- D. To establish the testability of the test basis

Correct Answer: D

QUESTION 3

The execution phase traditionally accounts for 40% of the test effort. In certain projects, this percentage may be considerably lower.

What reasons may account for this?

- A. Automating the testing process.
- B. Employment of more testers.
- C. Performing the tests simultaneously.
- D. The use of Exploratory Testing.

Correct Answer: A

QUESTION 4

For the creation of the central starting point there are several techniques. In the given situation it is necessary that consistency between the data entered is guaranteed. Which of the techniques below is preferable if only one technique may be used?

- A. use of production data
- B. entering through separate front-end software
- C. entering through regular system functions

Correct Answer: C

QUESTION 5

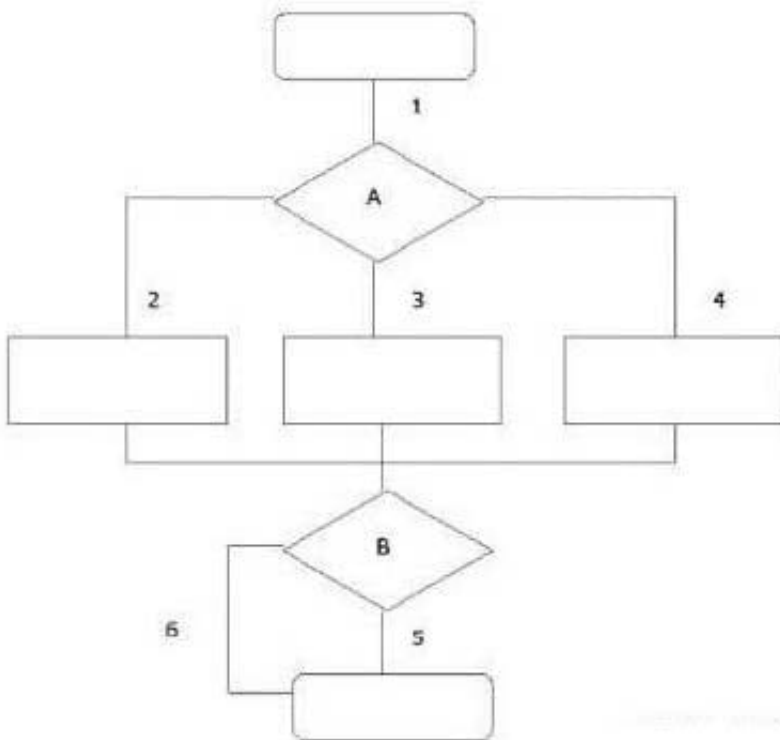
Which of the following may be a consequence of not performing a pretest?

- A. A degradation in quality of the test basis.
- B. An increase in the number of test cases.
- C. Loss of time during the test execution.
- D. Increased risk of damage during production.

Correct Answer: C

QUESTION 6

See the illustration below:



What is the minimum number of logical test cases generated by the use of the Process Cycle Test if the coverage type paths test depth level 2 is used?

- A. 3
- B. 5
- C. 6
- D. 9

Correct Answer: C

QUESTION 7

See the following specification:

IF	customer no. > 200 AND (group=330 OR article=action OR customer years >=10)
	TI ICN discount = 10%
	IF customer no. > 500 AND region code = 4
	THEN invoice type = A
	ELSE
	invoice type = C
	ENDIF
ELSE	invoice type = C
ENDIF	

How many test situations can be distinguished for this specification when the coverage type decision points modified condition/decision is used?

- A. 2
- B. 6
- C. 8
- D. 64

Correct Answer: C

QUESTION 8

Which defect has an internal cause that can be solved within the test team?

- A. Adefect in the test basis
- B. Adefect in the test specification
- C. Adefect in the test object

Correct Answer: B

QUESTION 9

See the figure below:

Screen 2.6	Always Wrong				W/V	W/V	Always Valid	
Value field	Too many symbols	Too few symbols	Wrong symbols	Value outside of range	Leave field empty	Value zero	Min. value	Max. value
Bank group	> 5	< 5	- num	not applicable	EM	EM	00001	55555
Expiry date	> 4	< 4	- num	- **01-**12	OK	EM	0001	9912
Postcode	> 6	< 6	- alphanum	- GGGGXXX	EM	EM	1000AA	9999ZZ
Pin ind	> 1	< 1	- alpha	- {Y,N}	EM	EM	Y	N

Of which test design technique is this an example?

- A. Data Combination Test
- B. Data Cycle Test
- C. Semantic Test
- D. Syntactic Test

Correct Answer: D

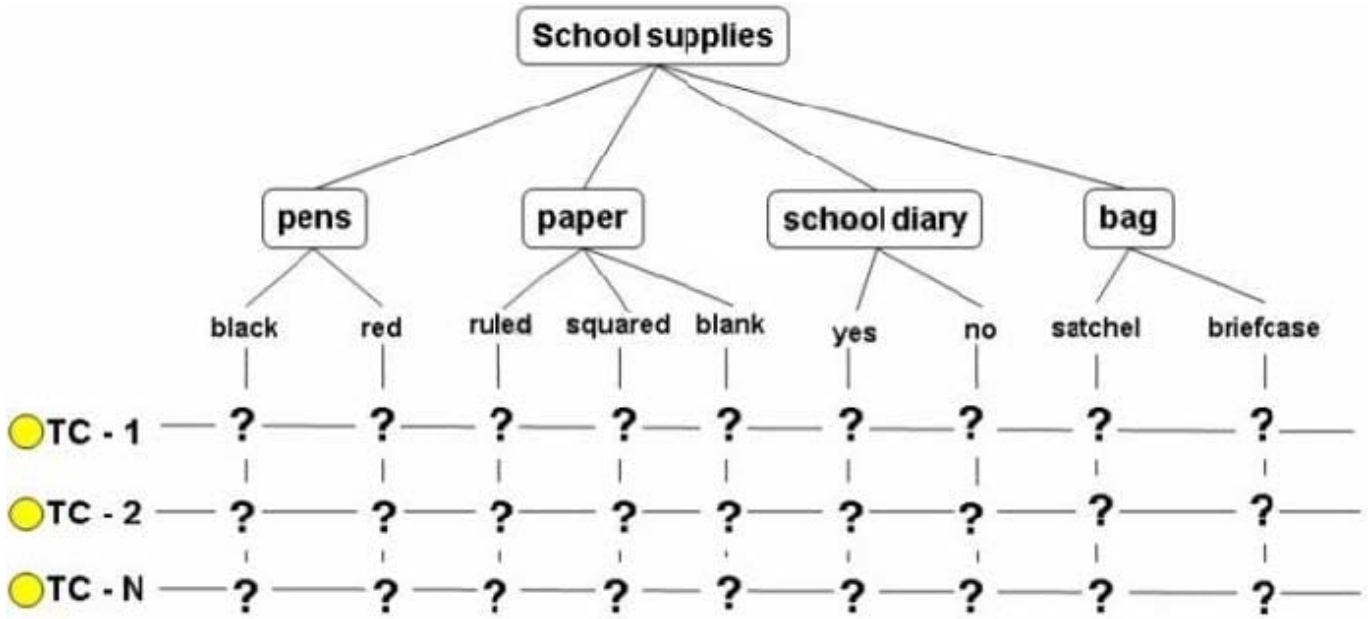
QUESTION 10

See the diagram below:

In order to test the purchase of school supplies, logical test cases must be created based on the data combination test. It has been agreed in this instance that a medium depth test is required. This means that all data must be subjected to pairwise testing:

Pens - paper - school diary - bag

The test cases are designed using the below classification tree.



What is the minimum number of test cases that will be generated by applying the pairwise testing technique? (What is "N" at a minimum?)

- A. 6
- B. 8
- C. 12
- D. 24

Correct Answer: A

[Latest EX0-113 Dumps](#)

[EX0-113 Exam Questions](#)

[EX0-113 Braindumps](#)