

# QV\_DEVELOPER\_01<sup>Q&As</sup>

QlikView 11 Developer Certification Examination

**Pass QlikView QV\_DEVELOPER\_01 Exam with 100%  
Guarantee**

Free Download Real Questions & Answers **PDF** and **VCE** file from:

[https://www.pass2lead.com/qv\\_developer\\_01.html](https://www.pass2lead.com/qv_developer_01.html)

100% Passing Guarantee  
100% Money Back Assurance

Following Questions and Answers are all new published by QlikView  
Official Exam Center

- ⚙️ **Instant Download** After Purchase
- ⚙️ **100% Money Back** Guarantee
- ⚙️ **365 Days** Free Update
- ⚙️ **800,000+** Satisfied Customers



**QUESTION 1**

A customer needs an application to reload in a short time period. The source tables are log files that are appended to on a daily basis.

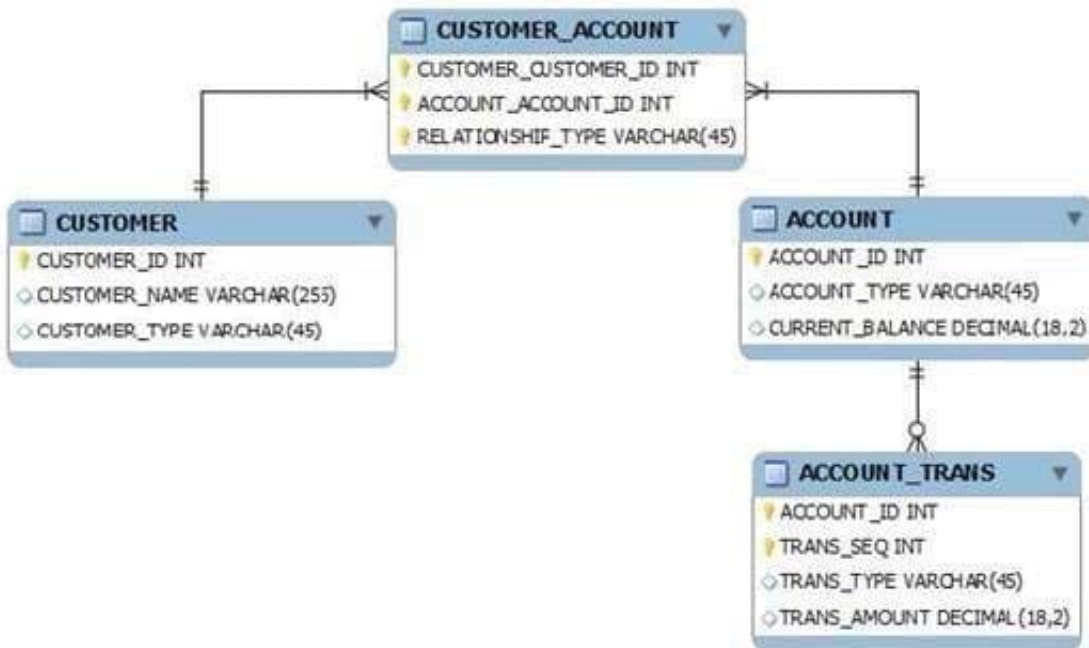
Which performance tuning option should a developer use?

- A. the QVD files to store the source tables
- B. the Partial Reload command with the append option
- C. the Load prefix Buffer with the incremental option
- D. the Load prefix Buffer and set the Keep Outdated QVD Buffers in the Document Properties

Correct Answer: C

**QUESTION 2**

Refer to the exhibit to the right.



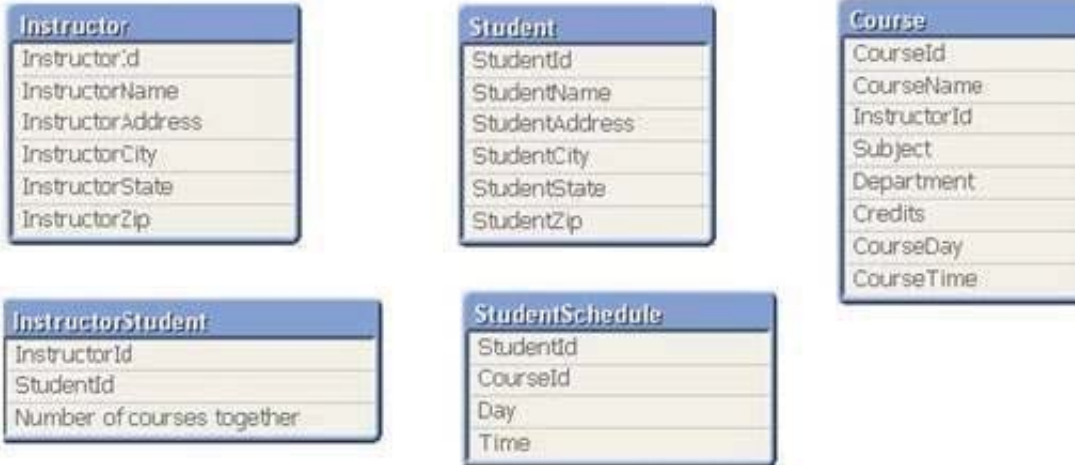
What is the cardinality of the relationship between CUSTOMER and ACCOUNT?

- A. many-to-many
- B. one-to-many
- C. one-to-none
- D. one-to-one

Correct Answer: A

**QUESTION 3**

Refer to the exhibit below.



The tables displayed in the exhibit need to be loaded into QlikView. How will the data model appear once the load is complete?

- A. There will be a relationship between all the tables without synthetic key tables or loosely coupled tables.
- B. There will be a relationship between four of the five tables and one table will be a data island.
- C. There will be a synthetic key table in the data model.
- D. There will be loosely coupled tables in the data model.

Correct Answer: D

**QUESTION 4**

A customer has an Addresses table with the fields. CustomerNumber, CustomerName, AddressLine1, AddressLine2, City, StateCode, PostalCode, and CountryCode.

A designer needs to design a chart to show a count of distinct customers in which the customer's CountryCode is US or CA, while ignoring all selections on the Addresses table except the CustomerNumber and CustomerName fields.

How can the designer calculate the required value?

- A. count({\$} distinct CustomerNumber)
- B. count({\$} distinct CustomerNumber)

- C. count({1} distinct CustomerNumber)
- D. count({\$} distinct CustomerNumber)
- E. count({\$} distinct CustomerNumber)

Correct Answer: B

---

#### QUESTION 5

A customer created 20 expressions that will be used repetitively throughout a QlikView application. These expressions could appear in more than 50 objects located on 15 tabs.

How can a developer efficiently apply and maintain these expressions?

- A. create the required expression in each object as needed and edit them in the Expression Overview
- B. load the text for each expression from a text file into a table in the data model and link it to the fact table
- C. create a table of indices and expression text and use the index value in place of the expression text in each object
- D. create a variable for each expression that contains the expression text and use the variable in place of the expression in each object

Correct Answer: D

---

#### QUESTION 6

A project to develop a QlikView application for a customer requires splitting developers into two teams.

One team will focus on developing source database query knowledge to create a reusable data layer.

There are several application-specific business rules for this project. The customer needs to incrementally accumulate history for the QlikView application over time.

The second team will focus on developing the presentation layer. This team also has data modeling and scripting expertise, but does not have source database query knowledge.

Which data loading strategy should the developers use on the project?

- A. create a series of QVWs that apply the business rules and then binary load them into the presentation layer QVW
- B. create the presentation layer QVW and connect directly to the source data and apply the business rules in the script
- C. create QVDs of the source data and load them into the presentation layer QVW and apply the business rules in the script
- D. create QVDs of the source data, apply the business rules and store a second layer of QVDs, and then load these QVDs into the presentation layer QVW

Correct Answer: D

---

### QUESTION 7

An Address Book table has a Country Code field. A standard lookup table exists in Excel to translate the Country Code to a Country description.

The Country Code will be US for any Address Book record with no Country Code value.

Which technique should a developer use to ensure a Country description is loaded for all Address Book records?

- A. load the Address Book records and perform a Left Join of the Excel data to the Address Book table
- B. load the Excel data and then load the Address Book data ensuring the Country Code field has the same name in both tables
- C. load the Excel data as a Mapping table and use Applymap with a default mapping value when loading the Address Booktable
- D. load the Excel data, then load the Address Book data using an If function to default Country Code to US, and then use the Peek function to retrieve the Country description

Correct Answer: C

---

### QUESTION 8

A developer made several changes to a 25-tab load script that normally runs for at least two hours. Which step should the developer take first to efficiently debug the script logic?

- A. place a Go To Exit statement after each block of revised script code, run the script, and comment each successive Go To Exit after a successful run
- B. move each revised tab in succession to the second tab position, place an Exit script statement at the end of the tab script, and run the script
- C. open the QlikView Debugger and use the step button to execute each line of the script
- D. open the QlikView Debugger and use Limited Load to execute the script

Correct Answer: D

---

### QUESTION 9

A customer needs to display sales amounts for the current month and a trend of sales over the prior 12 months using a small amount of screenspace.

Which chart type should the designer use to meet the customer's needs?

- A. a Combo Chart with one expression to display the current month sales and a second expression represented as a

Mini Chart to display a trend of sales over the prior 12 months

B. a Straight Table with one expression to display the current month sales and a second Line Chart to display a trend of sales over the prior 12 months

C. a Straight Table with one expression to display the current month sales and a second expression represented as a Mini Chart to display a trend of sales over the prior 12 months

D. a Straight Table with one expression to display the current month sales and a second expression represented as a Linear Gauge to display a trend of sales over the prior 12 months

Correct Answer: C

### QUESTION 10

A customer is building a dashboard to measure the performance of the support organization. The customer needs to dynamically sort the Ticket Severity field by Severity Weight field when the Ticket Severity columnheader is double-clicked in Straight Table charts. Example ticket severities. Urgent = 1 High = 2 Normal = 3 Low = 4

Which QlikView load script function can the developer use to create the Ticket Severity field to meet the customer's needs?

A. Rank( [Ticket Severity], [Severity Weight] ) AS [Ticket Severity]

B. Num( [Severity Weight], [Ticket Severity] ) AS [Ticket Severity]

C. Sort( [Ticket Severity], [Severity Weight] ) AS [Ticket Severity]

D. Dual( [Ticket Severity], [Severity Weight] ) AS [Ticket Severity]

Correct Answer: D

### QUESTION 11

Refer to the exhibit to the right.

```
1 QUALIFY *;  
2  
3 SalesPerson:  
4 LOAD DepartmentID,  
5     SalesPersonID,  
6     Name;  
7 SQL SELECT DepartmentID,  
8     SalesPersonID,  
9     Name  
10 FROM dbo.SalesPerson;  
11  
12 Left Join  
13 LOAD DepartmentID,  
14     Name;  
15 SQL SELECT DepartmentID,  
16     Name  
17 FROM dbo.Department;|
```

When the script displayed in the exhibit is reloaded, an error message is displayed.

Table not found

Left Join (salesPerson)

LOAD ID

DepartmentID

FROM

[DatasourceA.xlsx]

(ooxml, embeddedlabels, tableissalesPersonDepartment);

What is the likely cause of the error?

- A. When loaded, the salesPerson table is auto concatenated to Customer and does not exist when referenced.
- B. The Left Join statement fails to correctly bracket the referenced table name, such as Left Join ([salesPerson]).
- C. The Left Join statement fails to correctly quote the referenced table name, such as Left Join (IsalesPerson!).
- D. There is an error in the Customer table load and it is not created in memory.

Correct Answer: A

**QUESTION 12**

A customer has a set of date values in different formats.

Some dates are in Julian date format; Some dates are text strings.

How can a developer ensure the data is loaded in a consistent format?

- A. change the default DateFormat variable assignment on the Main script tab
- B. use the Date function to format the field during load
- C. use the Alt function with different Date# functions
- D. use the Lookup function with a format table

Correct Answer: C

---

**QUESTION 13**

Which technique should a developer use to clearly describe dimensions and measures for end users who need to use collaborative objects?

- A. add field metadata tags to fields in the load script
- B. put a How To sheet in the application
- C. put descriptive information in each object's help text
- D. add a system table to the application

Correct Answer: A

---

**QUESTION 14**

Refer to the exhibit to the right.



SalesOrderID	SalesAmount	City	Country
1	329	Chicago	US
2	931	New York	US
4	906	L.A.	US
5	17	LA	USA
6	547	Los Angeles	US
7	526	Berlin	DE
8	474	Hong Kong	CN
9	791	HongKong	CN
10	404	London	UK
11	198	London	US
12	606	Berlin	GER
13	141	Moscow	RU
14	223	NY	US
15	383	N.Y.	US

Which two data quality issues exist within the data set displayed in the exhibit? (Choose two.)

- A. multiple spellings of the same City
- B. the City value London is associated with two different Country values
- C. the Country values and salesOrderID values do not relate properly
- D. the salesAmount field name does not contain a space
- E. inconsistent Country abbreviations
- F. duplicate key values

Correct Answer: AF

**QUESTION 15**

Refer to the exhibit to the right.

```
Employees_US:  
LOAD EmployeeID,  
      Name,  
      Address;  
SQL SELECT EmployeeID,  
      Name,  
      Address  
FROM USEmployees;
```

```
Employees_UK:  
LOAD EmployeeID,  
      Name,  
      Address;  
SQL SELECT EmployeeID,  
      Name,  
      Address  
FROM UKEmployees;
```

A customer has two databases containing employee data for different regions. Based on the script displayed in the exhibit, what will be the resulting table schema?

- A. one table named Employees\_US
- B. one table named Employees\_UK
- C. two tables named Employees\_US and Employees\_UK with no associations
- D. two tables named Employees\_US and Employees\_UK with a synthetic key

Correct Answer: A

[Latest  
QV\\_DEVELOPER\\_01  
Dumps](#)

[QV\\_DEVELOPER\\_01 PDF  
Dumps](#)

[QV\\_DEVELOPER\\_01 VCE  
Dumps](#)