

ACLS^{Q&As}

Advanced Cardiac Life Support

Pass Test Prep ACLS Exam with 100% Guarantee

Free Download Real Questions & Answers **PDF** and **VCE** file from:

<https://www.pass2lead.com/acls.html>

100% Passing Guarantee
100% Money Back Assurance

Following Questions and Answers are all new published by Test Prep
Official Exam Center

- ⚙️ **Instant Download** After Purchase
- ⚙️ **100% Money Back** Guarantee
- ⚙️ **365 Days** Free Update
- ⚙️ **800,000+** Satisfied Customers



QUESTION 1

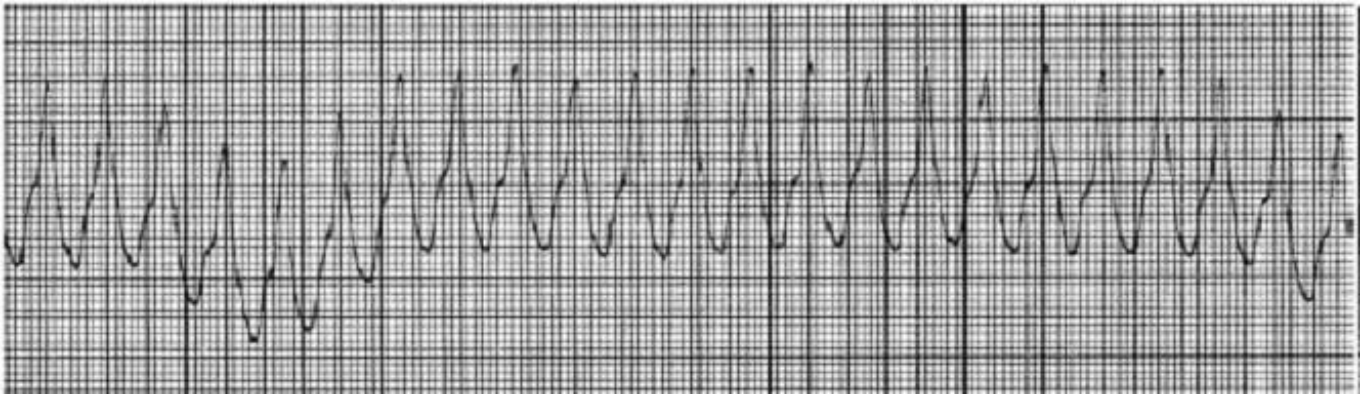
FILL BLANK Should suction be applied while performing endotracheal suction?

A. Avoid suction while inserting the catheter.

Correct Answer: A

QUESTION 2

A patient with a myocardial infarction develops the following rhythm and loses consciousness. The patient is pulseless and not breathing. What is the preferred immediate treatment?



A. administer bretylium

B. administer lidocaine

C. call for help and deliver a synchronized shock

D. call for help and deliver an unsynchronized shock

Correct Answer: D

QUESTION 3

FILL BLANK

What is the effect of dopamine at high doses (10-20 mcg/kg/min)?

A. Vasopressor dose Alpha-adrenergic effect causing peripheral arterial and venous vasoconstriction. Used to treat low blood pressure and shock.

Correct Answer: A

QUESTION 4

A patient is in cardiac arrest. Ventricular fibrillation has been refractory to an initial shock. Two attempts at peripheral IV access have been unsuccessful. The next recommended access route of administration for the delivery of drugs during CPR is

- A. Intraosseous
- B. Femoral vein
- C. Endotracheal
- D. External jugular vein

Correct Answer: A

QUESTION 5

SIMULATION

Where should you position the apex of the mask of the bag-valve-mask?

- A. Over the patient's nose.

Correct Answer: A

QUESTION 6

FILL BLANK

What is the appropriate dose of a medication given by endotracheal tube?

- A. Idioventricular rhythm or complete heart block

Correct Answer: A

QUESTION 7

SIMULATION

Identify four primary sites where a peripheral pulse may be palpated.

- A. Radial, brachial, posterior tibial, Dorsalis pedis.

Correct Answer: A

QUESTION 8

T/F: Infectious complications of intravenous cannulas should be prevented by using systemic antibiotics.

- A. True
- B. False

Correct Answer: B

QUESTION 9

T/F: Defibrillation "jump starts" the heart?

- A. False
- B. True

Correct Answer: A

Defibrillation actually produces temporary asystole.

QUESTION 10

FILL BLANK

How often should you repeat ventilations on a child?

- A. Every 3 seconds

Correct Answer: A

QUESTION 11

FILL BLANK

What is the most important goal of ACLS?

- A. Restoration of coronary perfusion with subsequent spontaneous cardiac rhythm and preservation of brain function.

Correct Answer: A

QUESTION 12

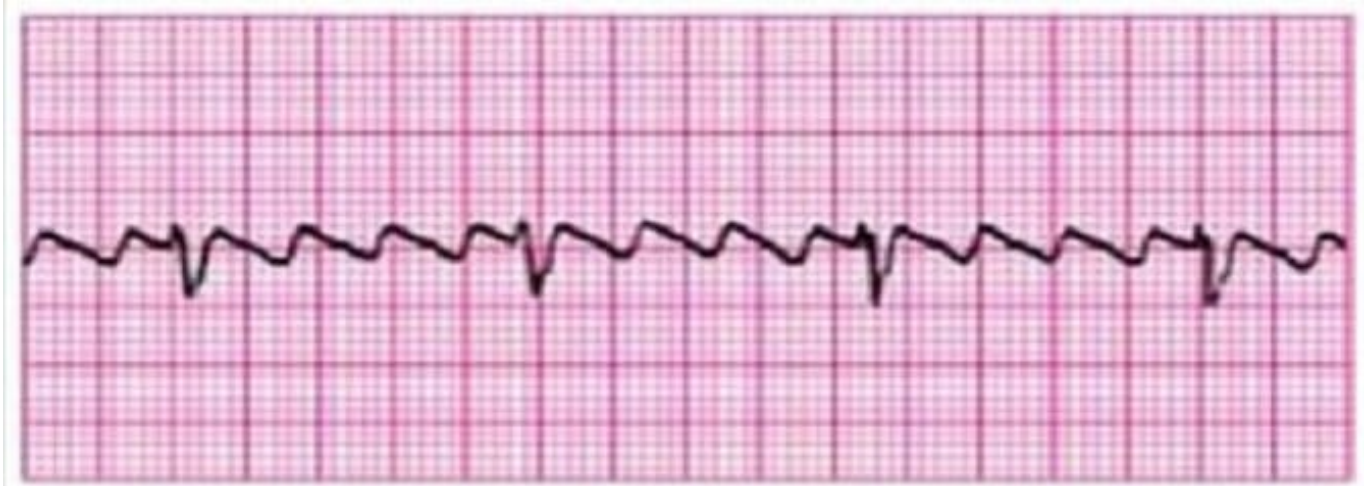


Identify the rhythm by selecting the best single answer:

- A. Normal sinus rhythm
- B. Sinus tachycardia
- C. Sinus bradycardia
- D. Reentry supraventricular tachycardia
- E. First-degree AV Block
- F. Second-degree AV Block (Mobitz 1 Wenckebach)
- G. Second-degree AV Block (Mobitz II Block)
- H. Third-degree AV Block
- I. Atrial fibrillation
- J. Atrial flutter
- K. Monomorphic ventricular tachycardia
- L. Polymorphic ventricular tachycardia
- M. Coarse ventricular fibrillation
- N. Fine ventricular fibrillation
- O. Agonal rhythm/asystole
- P. Pulseless electrical activity

Correct Answer: G

QUESTION 13



Identify the rhythm by selecting the best single answer:

- A. Normal sinus rhythm
- B. Sinus tachycardia
- C. Sinus bradycardia
- D. Reentry supraventricular tachycardia
- E. First-degree AV Block
- F. Second-degree AV Block (Mobitz 1 Wenckebach)
- G. Second-degree AV Block (Mobitz II Block)
- H. Third-degree AV Block
- I. Atrial fibrillation
- J. Atrial flutter
- K. Monomorphic ventricular tachycardia
- L. Polymorphic ventricular tachycardia
- M. Coarse ventricular fibrillation
- N. Fine ventricular fibrillation
- O. Agonal rhythm/asystole
- P. Pulseless electrical activity

Correct Answer: J

QUESTION 14

SIMULATION

Describe the major function of the aorta.

A. The aorta is the major artery originating from the heart and lying in front of the spine in the thoracic and abdominal cavities. This provides blood flow to the rest of the vascular system in the body.

Correct Answer: A

QUESTION 15

SIMULATION

Give an example of an advanced directive.

A. Do Not Resuscitate (DNR) orders.

Correct Answer: A

[Latest ACLS Dumps](#)

[ACLS Practice Test](#)

[ACLS Braindumps](#)