

ACMP_6.3^{Q&As}

Aruba Certified Mobility Professional 6.3

Pass Aruba ACMP_6.3 Exam with 100% Guarantee

Free Download Real Questions & Answers **PDF** and **VCE** file from:

<https://www.pass2lead.com/acmp-6-3.html>

100% Passing Guarantee
100% Money Back Assurance

Following Questions and Answers are all new published by Aruba
Official Exam Center

- ⚙️ **Instant Download** After Purchase
- ⚙️ **100% Money Back** Guarantee
- ⚙️ **365 Days** Free Update
- ⚙️ **800,000+** Satisfied Customers



QUESTION 1

When the controller is configured for Captive Portal and the user is only required to provide an email address for authentication, which option is configured in the GUI?

- A. enable termination
- B. enable guest logon
- C. enable user logon
- D. eap method
- E. disable CP Login

Correct Answer: B

QUESTION 2

What is the function of Band Steering?

- A. Balancing clients across APs on different channels within the same band
- B. Encourages clients, 5GHz capable, to connect on the 5GHz spectrum
- C. Coordinate access to the same channel across multiple APs
- D. Enables selection of 20 vs. 40 MHz mode of operation per band
- E. Enables acceptable coverage index on both the "b/g" and "a" spectrums

Correct Answer: B

QUESTION 3

Where should mobility domains be enabled in a network with 1 master, 1 backup master and 5 local controllers?

- A. Only on the master controller
- B. All the local controllers in the network
- C. All the controllers where the client is allowed to roam
- D. Master and backup master
- E. Only on the backup master

Correct Answer: C

QUESTION 4

Which match condition can be used by a server derivation rule? (Choose two)

- A. greater than
- B. less than
- C. inverse of
- D. contains
- E. equals

Correct Answer: DE

QUESTION 5

A controller is provisioned in L3 Mode for Wireless Users. What must be configured on the controller to enable DHCP requests to an external DHCP server?

- A. an IP helper command
- B. the IP address of the DNS server
- C. the IP address of the APs
- D. the subnet address of the DHCP server
- E. the DHCP server IPSEC Key

Correct Answer: A

QUESTION 6

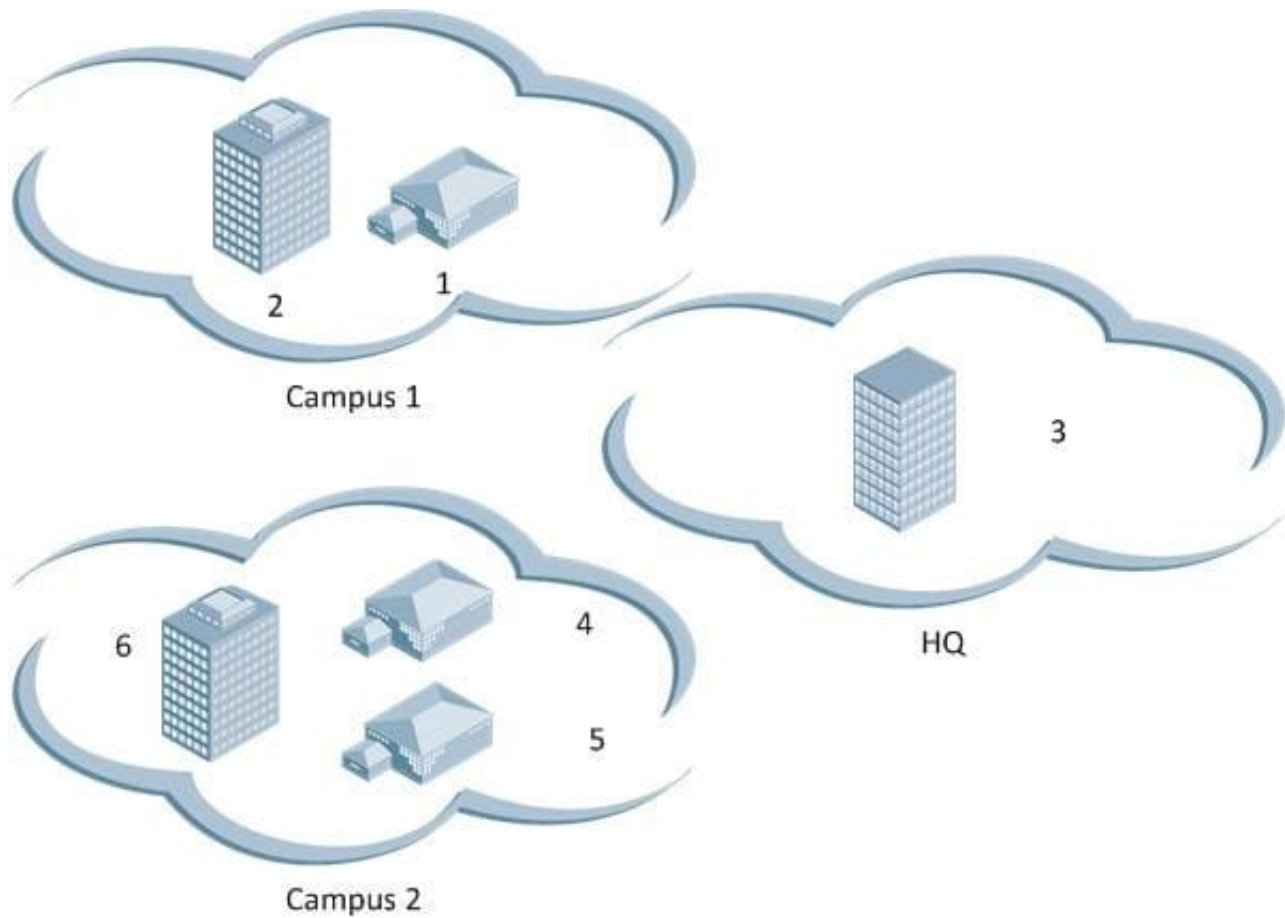
In an Aruba controller based system, the L3 mobility tunnel exists between the home agent and which other element?

- A. the default gateway
- B. the remote AP
- C. the foreign agent
- D. the mobile node
- E. the foreign switch

Correct Answer: C

QUESTION 7

As illustrated in the above diagram, a company has two campus locations and a building headquarters all located in different cities.



Following best practices, what would be the best way to construct mobility domains for the company?

- A. Buildings (1, 2) in one domain and Buildings (3, 4, 5, 6) in one domain
- B. Buildings (1, 2) in one domain, Building (3) in one domain, and Buildings (4, 5, 6) in one domain
- C. Buildings (1, 2, 4, 5, 6) in one domain and Building (3) in one domain
- D. Buildings (1, 2, 3, 4, 5, 6) in one domain
- E. Buildings (1) in one domain building (4) in one domain

Correct Answer: B

QUESTION 8

A Remote AP was properly functioning before losing its internet connection and now cannot communicate with the controller. What SSID is the AP broadcasting?

- A. The SSID in Operational mode Always and Forwarding mode Backup
- B. The SSID in Operational mode Split Tunnel and Forwarding mode Bridge

- C. The SSID in Operational mode Always and Forwarding mode Tunnel
- D. The SSID in Operational mode Standard and Forwarding mode Tunnel
- E. The SSID in Operational mode Persistent and Forwarding mode Bridge

Correct Answer: E

QUESTION 9

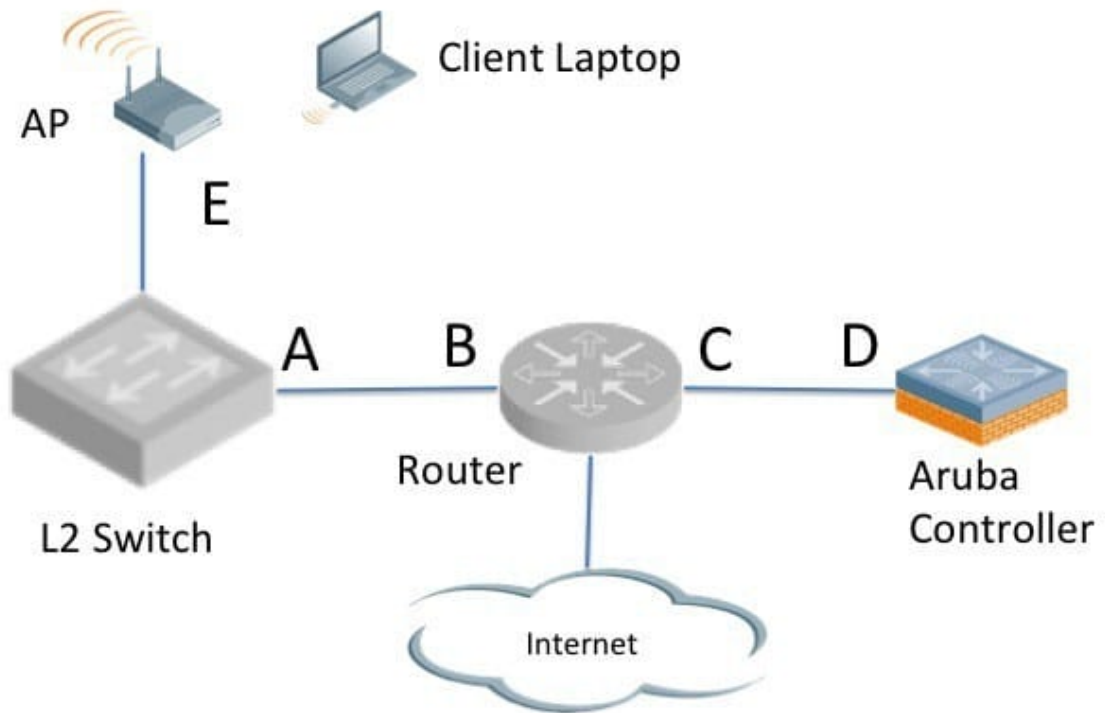
If a Remote AP (RAP) is attempting to contact a controller that is behind a NAT device what protocol must be allowed through the NAT/Firewall?

- A. PAPI
- B. NATT
- C. IPSec
- D. SSH
- E. GRE

Correct Answer: B

QUESTION 10

Exhibit: Referring to the diagram provided for this question, if the Aruba controller is configured to perform L3 switching, what will be the wireless client laptop default gateway?



- A. A
- B. B
- C. C
- D. D
- E. E

Correct Answer: D

QUESTION 11

When deploying Remote Mesh Portals, what is one of the purposes of the Mesh Private VLAN?

- A. To separate wireless user traffic coming from mesh networks from non-mesh networks
- B. To tag mesh wireless user traffic on a particular AP
- C. To allow Mesh Points to form private vlan networks with certain users

- D. To tag control plane traffic from Mesh points to the controller
- E. To tag clients high priority traffic

Correct Answer: D

QUESTION 12

View the Server group screen shot above.

Server Group > CorporateServers Show Reference Save As Reset

Fail Through

Servers				
Name	Server-Type	trim-FQDN	Match-Rule	Actions
RadiusNY1	Radius	No		Edit Delete ▲ ▼
RadiusMiami	Radius	No		Edit Delete ▲ ▼

New

Server Rules								
Priority	Attribute	Operation	Operand	Type	Action	Value	Validated	Actions
New								

A company has provisioned the same VAP, AAA and SSID profiles at both its Miami and NY offices. This Server Group is applied for 802.1x authentication at both locations. The user's credentials are only found in the Miami Radius server "RadiusMiami". There is no Radius synchronization and both servers are reachable. What happens when the user attempts to authenticate?

- A. The controller recognizes the users Domain and sends the authentication request directly to RadiusMiami.
- B. The request is initially sent to RadiusNY1 then RadiusNY1 redirects the controller to send the authentication request to RadiusMiami
- C. RadiusNY1 receives the request and returns a deny. No other action is taken.
- D. RadiusNY1 receives the request and returns a deny. The authentication request will then be sent to RadiusMiami.
- E. The RadiusNY1 sends the request to RadiusMiami that replies to the controller

Correct Answer: C

QUESTION 13

In the above screen capture: The administrator notes that most of the configuration options are grayed out and have no action. What is the cause of the problem?

Virtual AP > R5-employee1-vap_prof

Show Reference

Save As

Reset

Virtual AP enable	<input checked="" type="checkbox"/>	Allowed band	all ▾
VLAN	11 <-- --NONE-- ▾	Forward mode	tunnel ▾
Deny time range	--NONE-- ▾	Mobile IP	<input checked="" type="checkbox"/>
HA Discovery on-association	<input type="checkbox"/>	DoS Prevention	<input type="checkbox"/>
Station Blacklisting	<input checked="" type="checkbox"/>	Blacklist Time	3600 sec
Dynamic Multicast Optimization (DMO)	<input type="checkbox"/>	Dynamic Multicast Optimization (DMO) Threshold	6
Authentication Failure Blacklist Time	3600 sec	Strict Compliance	<input type="checkbox"/>
VLAN Mobility	<input type="checkbox"/>	Preserve Client VLAN	<input type="checkbox"/>
Remote-AP Operation	standard ▾	Drop Broadcast and Multicast	<input type="checkbox"/>
Convert Broadcast ARP requests to unicast	<input checked="" type="checkbox"/>	Disable conversion multicast RA packets to unicast	<input type="checkbox"/>
Deny inter-user traffic	<input type="checkbox"/>	Band Steering	<input type="checkbox"/>
Steering Mode	prefer-5ghz ▾		

- A. attempting to make global changes on a Master Controller
- B. attempting to make global changes on a Local Controller
- C. this change can only be performed via the CLI
- D. does not have the correct software license
- E. there is an error in the configuration

Correct Answer: B

QUESTION 14

Which of the following statements is true of Spectrum Mode?

- A. No licenses are required to run an AP in Spectrum mode
- B. Spectrum mode can only be configured for one AP at a time
- C. An AP can be in spectrum mode for both 2.4 and 5G bands at the same time
- D. An AP can be placed in Spectrum Mode via the Spectrum Profile

E. Spectrum mode can be configured from the GUI under AP installation

Correct Answer: C

QUESTION 15

Exhibit: Referring to the above screen capture, if an administrator desires to change a specific AP into a Spectrum Monitor without assigning the AP to a new group, which menus could be used?

WIZARDS

AP

Controller

Campus WLAN

Remote AP

WIP

AirWave

NETWORK

> **Controller**

VLANs

Ports

Uplink

IP

SECURITY

Authentication

Access Control

WIRELESS

AP Configuration

AP Installation

MANAGEMENT

General

Administration

Certificates

SNMP

Logging

Clock

Guest Provisioning

Captive Portal

SMTP

Bandwidth Calculator

Threshold

ADVANCED SERVICES

Redundancy

IP Mobility

Stateful Firewall

External Services

VPN Services

Wired Access

All Profiles

A. Network > Controller

B. Wireless > AP Configuration

C. Wireless > AP Installation

D. Advanced Services > Wireless

E. Wizards > WIP Wizard

Correct Answer: B

[Latest ACMP 6.3 Dumps](#)

[ACMP 6.3 VCE Dumps](#)

[ACMP 6.3 Study Guide](#)