

C9550-412^{Q&As}

IBM Business Process Management Express or Standard Edition
V8.5.5, BPM Application Development

Pass IBM C9550-412 Exam with 100% Guarantee

Free Download Real Questions & Answers **PDF** and **VCE** file from:

<https://www.pass2lead.com/c9550-412.html>

100% Passing Guarantee
100% Money Back Assurance

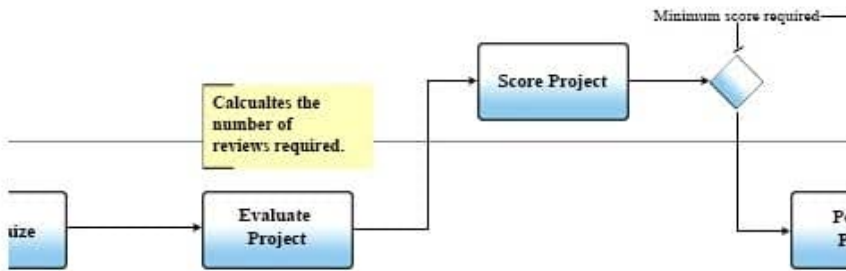
Following Questions and Answers are all new published by IBM Official
Exam Center

- ⚙️ **Instant Download** After Purchase
- ⚙️ **100% Money Back** Guarantee
- ⚙️ **365 Days** Free Update
- ⚙️ **800,000+** Satisfied Customers



QUESTION 1

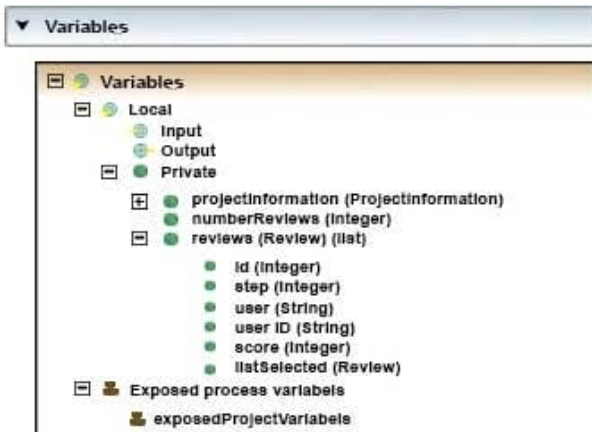
A construction company is using IBM business process manager to review projects. Every project should be reviewed and scored by several subject matter experts (SME) before it is approved. The number of reviews depends on a business rule that is evaluated at runtime. All the reviews should be executed at the same time by a different SME. Each review is recorded individually and should include the SME user ID. The company decided that no specific order is required for the final list of completed reviews. If the score of the process reaches the minimal total score required before all the reviews have been completed, the process should continue and all pending reviews should be interrupted. For this requirement, a BPM application developer is using a multi-instance loop (user task) and a decision task. The following JavaScript function is included in a server file. The `minimumScoreReached` function is defined so that the order of the final list of completed reviews is not supported.



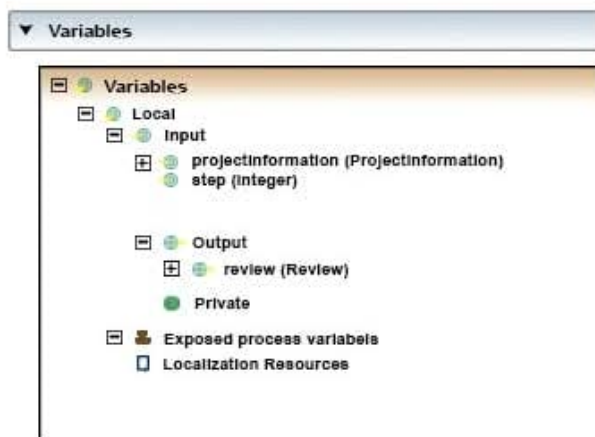
```

1 var Namespace = {
2   minimumScoreReached : function () {
3     var reviews = tw.local.reviews;
4     var limit = reviews.Listlength; var score = 0;
5     for ( var idx = 0 : idx < limit : idx++ ) {
6       score += reviews(idx).score;
7     }
8     log.info ( "log" score ""+score );
9     log.info ( "log" minimum score ""+tw.epv.exposedProjectVariables.minimumScore);
10    return (score > tw.epv.exposedProjectVariables.minimumScore) ? true : false;
11  }
12 }
    
```

Variable in the Business Process Definition (BPD) are defined as follow:



Variable for **Score Project** task are:



The screenshot shows the configuration for a Multi-instance Loop. The 'Loop Type' is set to 'Multi-instance Loop'. Under the 'Multiple-instance Loop' section, 'Start Quantity' is set to 'tw.local.numberReviews', 'Ordering' is 'Run in Parallel', and 'Flow Condition' is 'Conditional Wait (Complex)'. The 'Complex Flow Condition' field contains the value '1'. There is a checkbox for 'Cancel Remaining Instances' which is checked. Below this section is a 'Simple Loop' section.

The screenshot shows the 'Input Mapping' and 'Output Mapping' sections. In the 'Input Mapping' section, 'tw.local.projectInformation' is mapped to 'projectInformation (...)' and 'tw.system.step.counter' is mapped to 'step (Integer)'. In the 'Output Mapping' section, 'review (Review)' is mapped to an empty field.

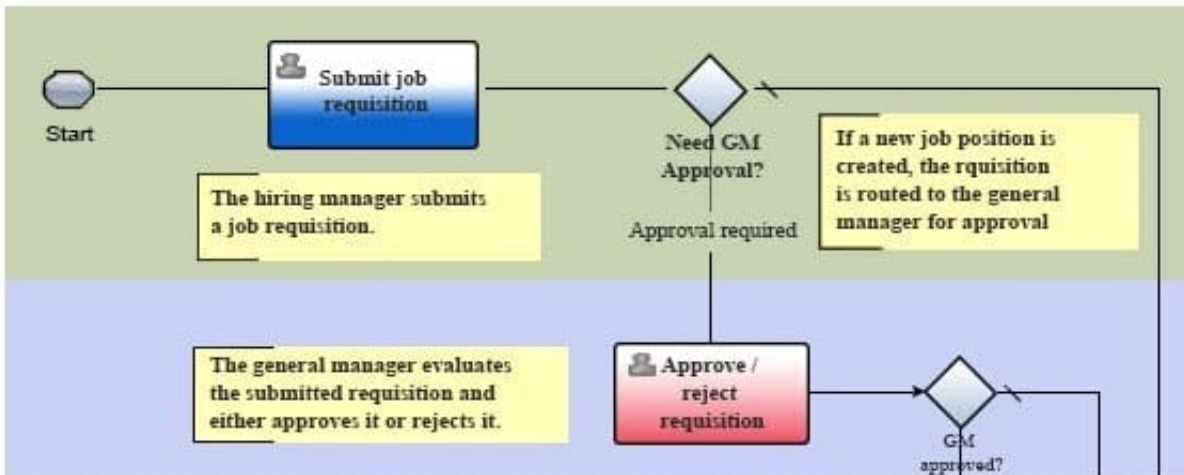
How should the BPM application developer configure the behavior and data mapping for the multi-instance loop? (choose 2)

- A. Map review output variable to tw.local.reviews Q in the Output Mapping section.
- B. Map review output variable to tw.local.reviews [tw.local.reviews.listLength] in the Output Mapping section.
- C. Write Namespace.minimumScoreReachedQ in the Complex Flow Condition field
- D. Write return Namespace.minimumScoreReachedQ in the Complex Flow Condition field
- E. Add a new step output variable to the human service, and then use the following in the Output Mapping section: Map step output variable to tw.local.step Map review output variable to tw.local.reviews! tw.local.step]

Correct Answer: DE

QUESTION 2

A new business process application is being created with several business process definitions (BPD). One of them is shown in the exhibit:



The following requirement should be met:

The first user task should be assigned automatically to the user who starts this top-level BPD. A BPM application developer is creating a new business process application that is required to have no deprecated features.

How should the BPM application developer configure the assignment for this user task?

- A. Select Last User in the User Distribution field
- B. Select Last User in Lane in the Assign to field
- C. Select Last User in the User Distribution field and Last User in Lane in the Assign to field
- D. Select Custom in the Assign to field and write `tw.system.step.user` into the Expression field

Correct Answer: D

QUESTION 3

Which characteristic does an unstructured ad-hoc activity have? An unstructured ad-hoc activity:

- A. cannot be hidden
- B. must be non-repeatable
- C. must be started by a user
- D. has no input and output flows

Correct Answer: D

QUESTION 4

How are the three editions, Express, Standard and Advanced, of IBM Business Process Manager V8.5.5 differentiated? (choose 2)

- A. Advanced Editon has built in ESB and SOA capabilities.
- B. Standard Editon and Advanced Editon support BPEL and BPMN.
- C. Express Editon and Standard Editon support load balancini.
- D. Express Editon is limited in number of cores and number of users.
- E. Express Editon and Standard Editon support Intel and Power Platforms.

Correct Answer: CD

QUESTION 5

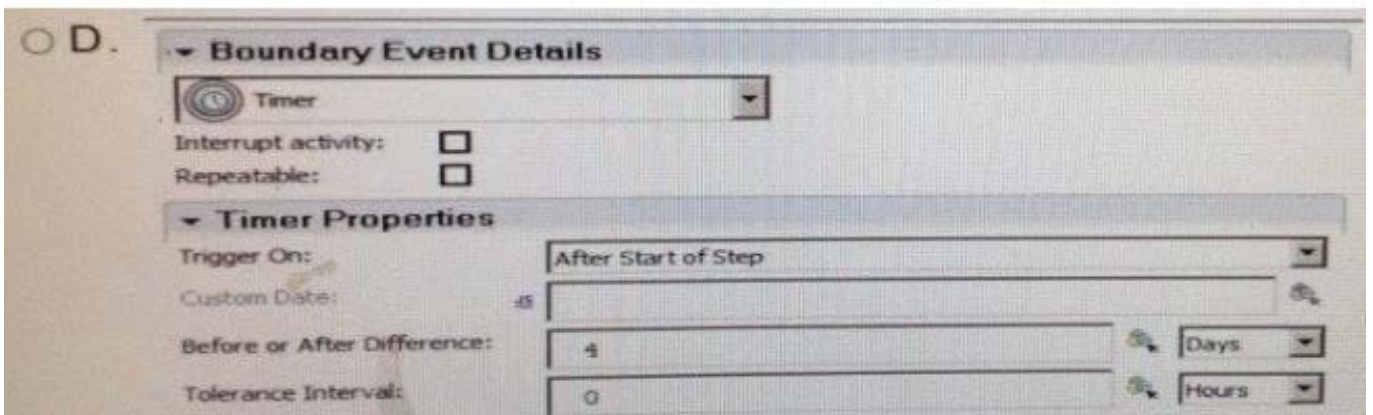
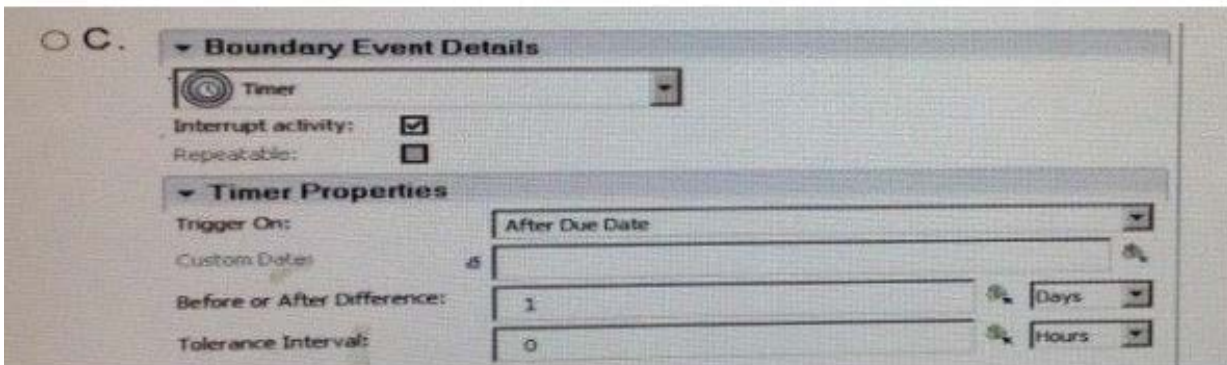
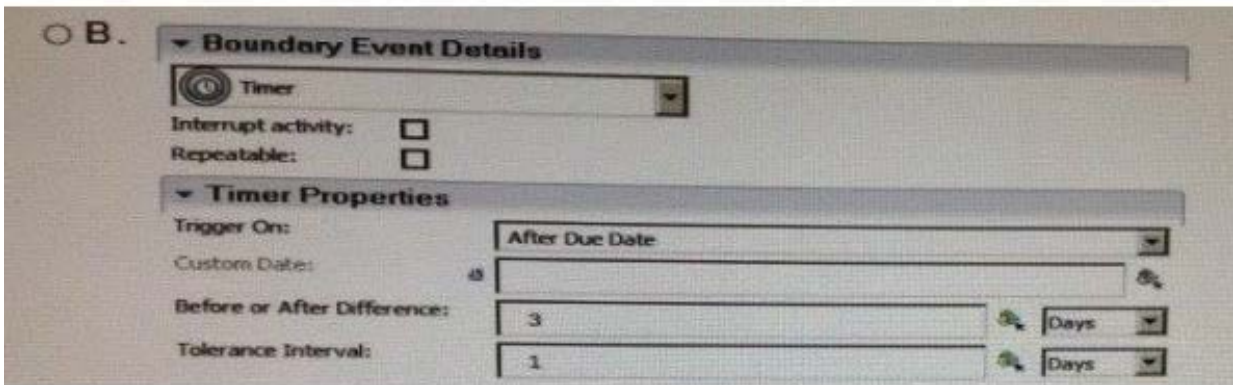
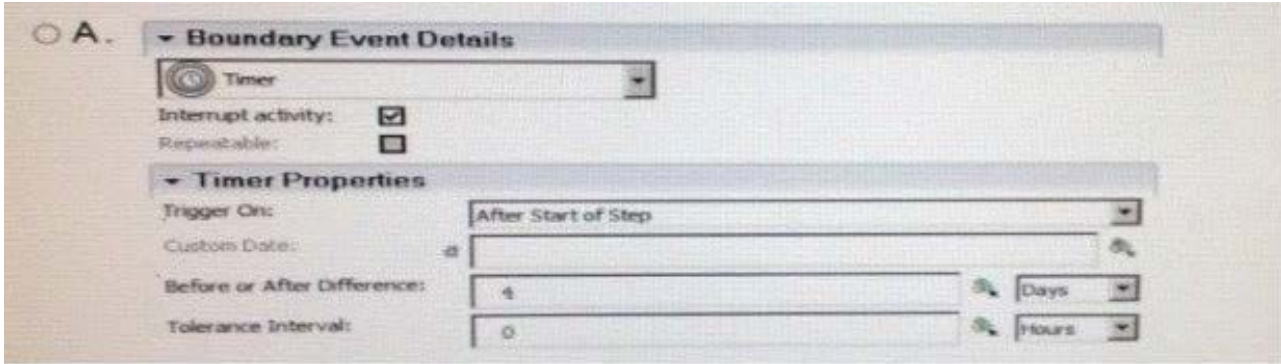
Afer deployini a new snapshot and miiratni in-fiiht instances to the new snapshot, a BPM applicaton developer has found some instances with orphaned tokens. Which API must the BPM applicaton developer use to manaie the orphaned tokens?

- A. Java
- B. REST
- C. JavaScript
- D. Web Services

Correct Answer: B

QUESTION 6

An insurance company has a claims process that is performed by a claims analyst and is due in 3 days. If the claims analyst has not completed the task in 4 days an escalaton should be sent to a manaier The claims analyst can still complete the task, even if the escalaton has been triiiered, and the manaier should only be notfde once. Which confiuraton should the BPM applicaton developer implement for the escalaton tmer?



A. Exhibit A

- B. Exhibit B
- C. Exhibit C
- D. Exhibit D

Correct Answer: A

QUESTION 7

A BPM Application developer needs to customize the Process Performance and Team Performance dashboards to meet corporate requirements. To do so, what should BPM application developer do?

- A. Make the dashboards editable in the dashboards toolkit, make the changes, take a new snapshot, and deploy the toolkit.
- B. Clone the most recent snapshot of the Dashboards toolkit, make the changes, take a new snapshot, and deploy the toolkit.
- C. Clone the most recent snapshot of the Process Portal Application, make the changes and deploy the customized Portal Process application.
- D. Create new Process and Team Performance dashboards in a new process application, configure Process Portal to use the new dashboards, and deploy the process application

Correct Answer: B

QUESTION 8

A BPM Application developer is tasked with exposing a service contained in a BPM Process Application as a web service that may be called by external systems. In the Process Designer, the BPM Application developer has created a new web service, specified the designated service as an operation and has changed the operation name from "untitled" to something meaningful. The web service requires no special namespace or security settings and it is to inherit the default snapshot. What is the next action that the BPM application developer must take?

- A. Publish the web service to the application server.
- B. Take a snapshot and deploy it to the process server.
- C. Edit the WSDL URI to indicate that the default snapshot is the target.
- D. Generate the data schemas (XSDs) for the inputs and outputs of the service.

Correct Answer: C

QUESTION 9

A company that operates in multiple countries plans to build a human resources process that needs to support multiple languages. The BPM Application developer assigned to the project knows that it will be necessary to create a localization resource in the process application that will contain a set of localization keys, the list of languages to support and

translations in each language for each key.

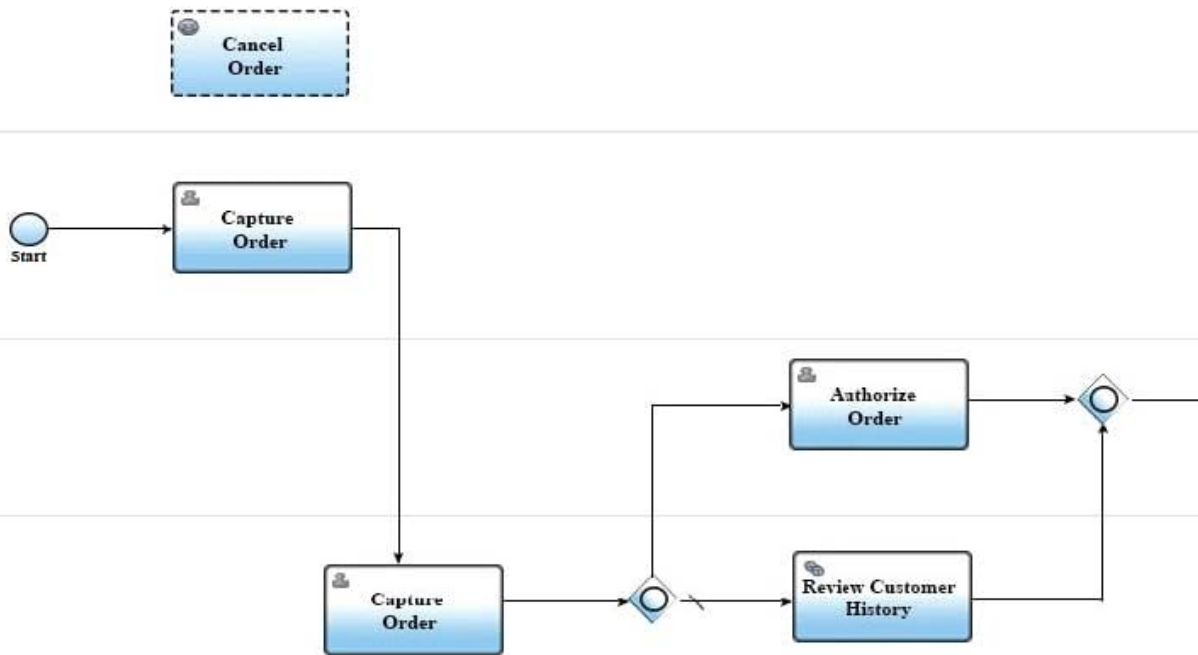
In addition to the coach view label, which of the following components of the process application can the BPM application developer configure to support multiple languages?

- A. Team name, process instance name, and coach view hover help.
- B. Team name, task subject, and coach view configuration option label.
- C. Process instance name, task subject, and coach view configuration option label.
- D. Coach view hover help, coach view configuration option group field, and coach view configuration option label.

Correct Answer: D

QUESTION 10

A BPM application developer is using an event sub process to implement a cancellation pattern for a Business Process Definition (BPD) as in the following diagram.



The following requirements must be met:

Cancellation can occur at any point in time during execution.

All the activities should be interrupted once the cancellation has been issued. How must the BPM application developer configure the event sub process?

- A. Select the Interrupt Parent Process option in the start event of the event sub process.
- B. Call the `API.tw.system.interruptParentProcess()` at the beginning of the event sub process.
- C. Select the event sub process and under implementation properties select the Interrupt Parent Process option.

D. Attach the intermediate message event (IME) to each activity in the BPD. Associate the same UCA that starts the event sub process to each IME. Select the Interrupt Activity option on all IMEs.

Correct Answer: D

[Latest C9550-412 Dumps](#)

[C9550-412 Practice Test](#)

[C9550-412 Braindumps](#)