

CV0-003^{Q&As}

CompTIA Cloud+ Certification

Pass CompTIA CV0-003 Exam with 100% Guarantee

Free Download Real Questions & Answers **PDF** and **VCE** file from:

<https://www.pass2lead.com/cv0-003.html>

100% Passing Guarantee
100% Money Back Assurance

Following Questions and Answers are all new published by CompTIA
Official Exam Center

-  **Instant Download** After Purchase
-  **100% Money Back** Guarantee
-  **365 Days** Free Update
-  **800,000+** Satisfied Customers



QUESTION 1

A cloud administrator is investigating slow VM performance. The administrator has checked the physical server performance and has identified the host is under stress due to a peak usage workload. Which of the following is the NEXT step the administrator should complete?

- A. Perform a root cause analysis.
- B. Migrate the VM to a different host.
- C. Document the findings.
- D. Perform a system restart.

Correct Answer: A

Reference: <https://docs.vmware.com/en/VMware-Smart-Assurance/10.1.7/deployment-scenarios/GUID-DD90BD68-5A04-405E-B532-5B928CA39CAE.html>

QUESTION 2

A company is comparing an application environment to be hosted on site versus a SaaS model of the same application. Which of the following SaaS-based licensing models should the administrator consider?

- A. Per core
- B. Per socket
- C. Per instance
- D. Per user

Correct Answer: D

QUESTION 3

Lateral-moving malware has infected the server infrastructure. Which of the following network changes would MOST effectively prevent lateral movement in the future?

- A. Implement DNSSEC in all DNS servers
- B. Segment the physical network using a VLAN
- C. Implement microsegmentation on the network
- D. Implement 802.1X in the network infrastructure

Correct Answer: B

Microsegmentation is a type of network security technique that divides a network into smaller logical segments or zones based on workload or application characteristics and applies granular policies and rules to control and isolate traffic within each segment or zone. Implementing microsegmentation on the network can help prevent lateral movement in the future after lateral-moving malware has infected the server infrastructure, as it can limit the exposure and spread of malware by restricting access and communication between different segments or zones based on predefined criteria such as identity, role, or behavior. References: CompTIA Cloud+ Certification Exam Objectives, page 14, section 2.7

QUESTION 4

A company needs to rehost its ERP system to complete a datacenter migration to the public cloud. The company has already migrated other systems and configured VPN connections.

Which of the following MOST likely needs to be analyzed before rehosting the ERP?

- A. Software
- B. Licensing
- C. Right-sizing
- D. The network

Correct Answer: D

The network is the set of devices, connections, protocols, and configurations that enable communication and data transfer between different systems and applications. The network can affect the rehosting of an ERP system to complete a datacenter migration to the public cloud, as it can influence factors such as bandwidth, latency, availability, security, and compatibility. The network needs to be analyzed before rehosting the ERP system to ensure that the network requirements and specifications are met, the network performance and reliability are maintained or improved, and the network security and integrity are preserved or enhanced. References: CompTIA Cloud+ Certification Exam Objectives, page 18, section 3.5

QUESTION 5

Following is a sample result from a recently completed load test.

Type	Capacity	Utilization
CPU	2	25%
Memory	4GB	20%
Storage	2TB	65%

Based on the information provided, which of the following would be the BEST recommendation?

- A. Use the test result as a benchmark and document it.
- B. Downsize the CPU and memory assignment.

- C. Decrease assigned storage capacity.
- D. Implement storage compression.

Correct Answer: D

QUESTION 6

A cloud administrator needs to deploy a security virtual appliance in a private cloud environment, but this appliance will not be part of the standard catalog of items for other users to request. Which of the following is the BEST way to accomplish this task?

- A. Create an empty VM, import the hard disk of the virtual appliance, and configure the CPU and memory.
- B. Acquire the build scripts from the vendor and recreate the appliance using the baseline templates.
- C. Import the virtual appliance into the environment and deploy it as a VM.
- D. Convert the virtual appliance to a template and deploy a new VM using the template.

Correct Answer: D

Reference: <https://www.techtarget.com/searchcloudcomputing/definition/private-cloud>

QUESTION 7

A web application has been configured to use auto-scaling for provisioning and deprovisioning more VMs according to the workload. The systems administrator deployed a new CI/CD tool to automate new releases of the web application. During the night, a script was deployed and configured to be executed by the VMs during bootstrapping. Now, the auto-scaling configuration is creating a new VM every five minutes. Which of the following actions will MOST likely resolve the issue?

- A. Reducing the maximum threshold in the auto-scaling configuration
- B. Debugging the script and redeploying it
- C. Changing the automation tool because it is incompatible
- D. Modifying the script to shut down the VM after five minutes

Correct Answer: B

The best way to resolve the issue where the autoscaling configuration is creating a new VM every five minutes after deploying a new CI/CD tool to automate new releases of the web application and configuring a script to be executed by the VMs during bootstrapping is to debug the script and redeploy it. Debugging the script means finding and fixing any errors or bugs in the code or logic of the script that may cause unexpected or undesired behavior, such as triggering the autoscaling condition or failing to complete the bootstrapping process. Redeploying the script means updating or replacing the existing script with the corrected or improved version of the script. Reference: [CompTIA Cloud+ Certification Exam Objectives], Domain 4.0 Troubleshooting, Objective 4.5 Given a scenario, troubleshoot automation/orchestration issues.

QUESTION 8

A security team is conducting an audit of the security group configurations for the Linux servers that are hosted in a public IaaS. The team identifies the following rule as a potential issue:

Protocol	Port	Source	Description
TCP	22	0.0.0.0/0	Allow SSH access

A cloud administrator, who is working remotely, logs in to the cloud management console and modifies the rule to set the source to "My IP." Shortly after deploying the rule, an internal developer receives the following error message when attempting to log in to the server using SSH: Network error: Connection timed out. However, the administrator is able to connect successfully to the same server using SSH. Which of the following is the BEST option for both the developer and the administrator to access the server from their locations?

- A. Modify the outbound rule to allow the company's external IP address as a source
- B. Add an inbound rule to use the IP address for the company's main office as a source
- C. Modify the inbound rule to allow the company's external IP address as a source
- D. Delete the inbound rule to allow the company's external IP address as a source

Correct Answer: A

QUESTION 9

A systems administrator needs to configure a set of policies to protect the data to comply with mandatory regulations.

Which of the following should the administrator implement to ensure DLP efficiently prevents the exposure of sensitive data in a cloud environment?

- A. Integrity
- B. Versioning
- C. Classification
- D. Segmentation

Correct Answer: C

Classification is a process of assigning labels or categories to data based on its sensitivity, value, or risk level. Classification can help implement data loss prevention (DLP) policies by identifying which data needs to be protected and how to protect it according to its classification level. Classification can also help comply with mandatory regulations by ensuring that data is handled and stored appropriately based on its legal or contractual requirements. Classification is essential for DLP to efficiently prevent the exposure of sensitive data in a cloud environment. References: CompTIA Cloud+ Certification Exam Objectives, page 14, section 2.7

QUESTION 10

A SAN that holds VM files is running out of storage space.

Which of the following will BEST increase the amount of effective storage on the SAN?

- A. Enable encryption
- B. Increase IOPS
- C. Convert the SAN from RAID 50 to RAID 60
- D. Configure deduplication

Correct Answer: D

Deduplication is a type of data compression technique that eliminates redundant or duplicate data blocks or segments in a storage system or device. Configuring deduplication can help increase the amount of effective storage on a SAN that holds VM files and is running out of storage space, as it can reduce the storage space consumption and increase the storage space utilization by storing only unique data blocks or segments. Configuring deduplication can also improve performance and efficiency, as it can speed up data transfer and backup processes and save network bandwidth and power consumption. References: CompTIA Cloud+ Certification Exam Objectives, page 9, section 1.4

QUESTION 11

A cloud provider wants to make sure consumers are utilizing its IaaS platform but prevent them from installing a hypervisor on the server. Which of the following will help the cloud provider secure the environment and limit consumers' activity?

- A. Patch management
- B. Hardening
- C. Scaling
- D. Log and event monitoring

Correct Answer: B

Hardening is the best option to help the cloud provider secure the environment and limit consumers' activity on its IaaS platform. Hardening is a process of reducing the attack surface and vulnerabilities of a system or device by applying security configurations, patches, updates, policies, rules, etc. Hardening can prevent consumers from installing unauthorized or unsupported software on their cloud servers, such as

QUESTION 12

The human resources department was charged for a cloud service that belongs to another department. All other cloud costs seem to be correct.

Which of the following is the MOST likely cause for this error?

- A. Misconfigured templates

- B. Misconfigured chargeback
- C. Incorrect security groups
- D. Misconfigured tags

Correct Answer: B

The most likely cause for this error is misconfigured chargeback (Option B). Chargeback is a process by which the costs of using a service are allocated to the departments or individuals that are using that service. If the chargeback is misconfigured, it could result in costs being incorrectly allocated to the wrong department. This would explain why the human resources department is being charged for a service that belongs to another department, while all other cloud costs seem to be correct.

QUESTION 13

A systems administrator recently deployed a VDI solution in a cloud environment; however, users are now experiencing poor rendering performance when trying to display 3-D content on their virtual desktops, especially at peak times.

Which of the following actions will MOST likely solve this issue?

- A. Update the quest graphics drivers from the official repository
- B. Add more vGPU licenses to the host
- C. Instruct users to access virtual workstations only on the VLAN
- D. Select vGPU profiles with higher video RAM

Correct Answer: D

A vGPU profile is a configuration option that defines the amount of video RAM (vRAM) and other resources that are allocated to a virtual machine (VM) that uses a virtual graphics processing unit (vGPU). A vGPU profile can affect the rendering performance of a VM, as it determines how much graphics memory and processing power are available for displaying complex graphics content. Selecting vGPU profiles with higher video RAM can most likely solve the issue of poor rendering performance when trying to display 3-D content on virtual desktops, especially at peak times, as it can provide more graphics resources and improve the quality and speed of rendering. References: CompTIA Cloud+ Certification Exam Objectives, page 11, section 1.6

Reference: <https://www.cisco.com/c/dam/en/us/solutions/collateral/data-center-virtualization/desktop-virtualization-solutions-vmware-horizon-view/whitepaper-c11-741606.pdf>

QUESTION 14

A DevOps team needs to provide a solution that offers isolation, portability, and scalability. Which of the following would BEST meet these requirements?

- A. Virtual machines
- B. Containers
- C. Appliances

D. Clusters

Correct Answer: B

QUESTION 15

CORRECT TEXT

A company has decided to scale its e-commerce application from its corporate datacenter to a commercial cloud provider to meet an anticipated increase in demand during an upcoming holiday.

The majority of the application load takes place on the application server under normal conditions. For this reason, the company decides to deploy additional application servers into a commercial cloud provider using the on-premises

orchestration engine that installs and configures common software and network configurations.

The remote computing environment is connected to the on-premises datacenter via a site-to-site IPSec tunnel. The external DNS provider has been configured to use weighted round-robin routing to load balance connections from the Internet.

During testing, the company discovers that only 20% of connections completed successfully.

INSTRUCTIONS

Review the network architecture and supporting documents and fulfill these requirements:

Part 1:

1.
Analyze the configuration of the following components: DNS, Firewall 1, Firewall 2, Router 1, Router 2, VPN and Orchestrator Server.

2.
Identify the problematic device(s).

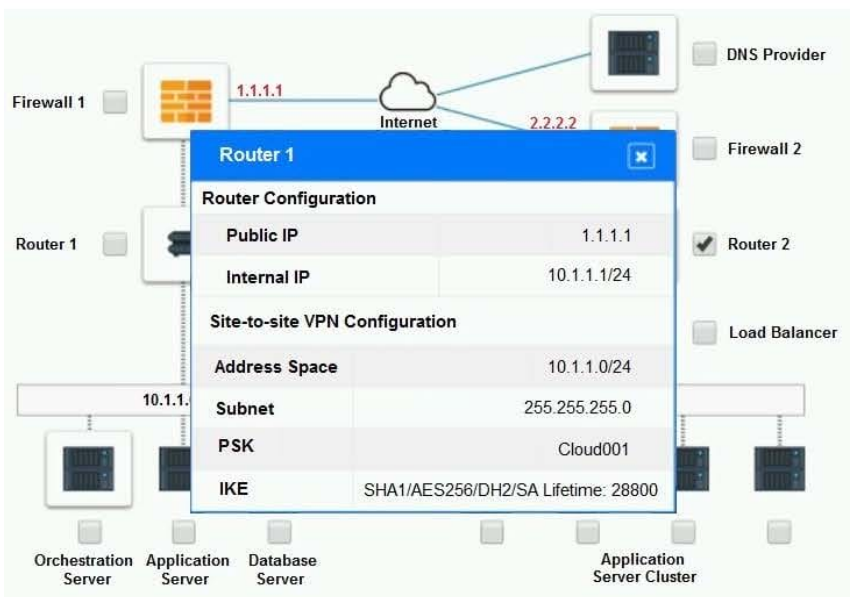
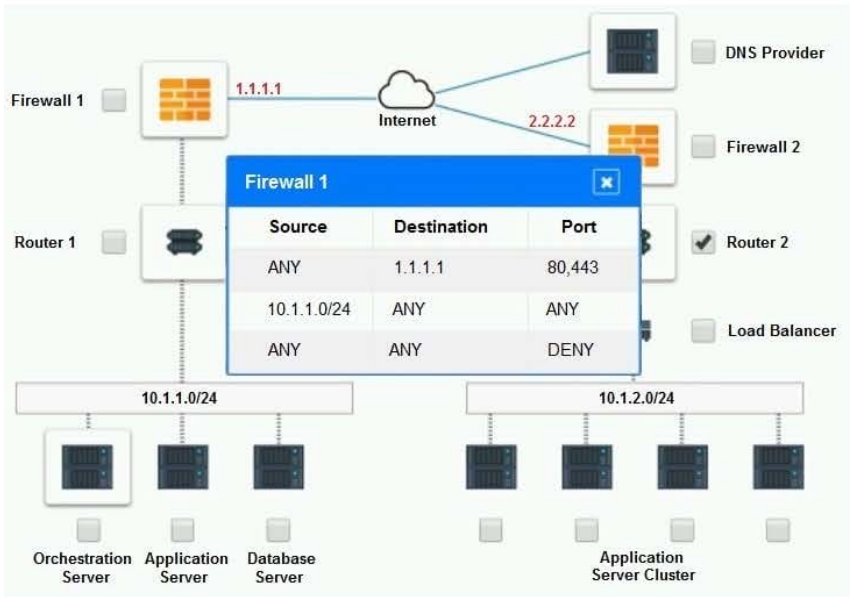
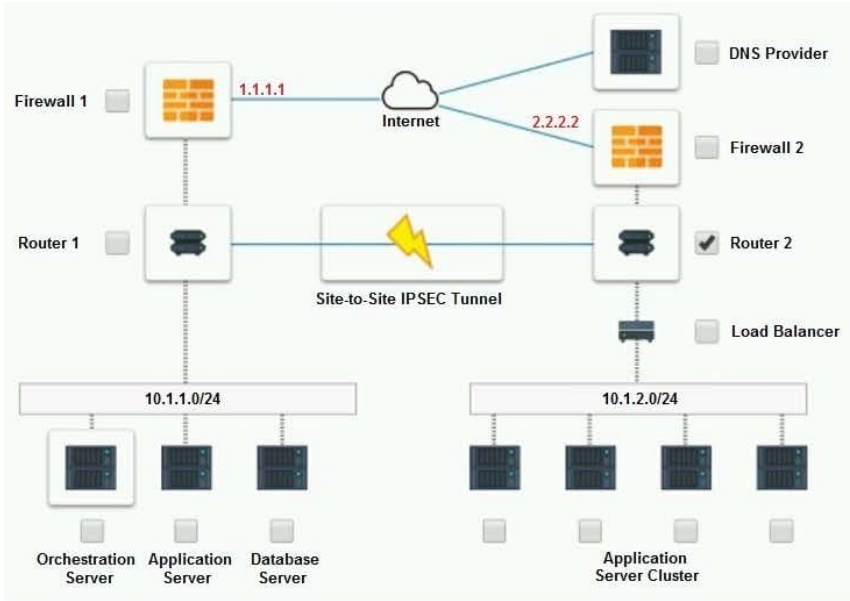
Part 2:

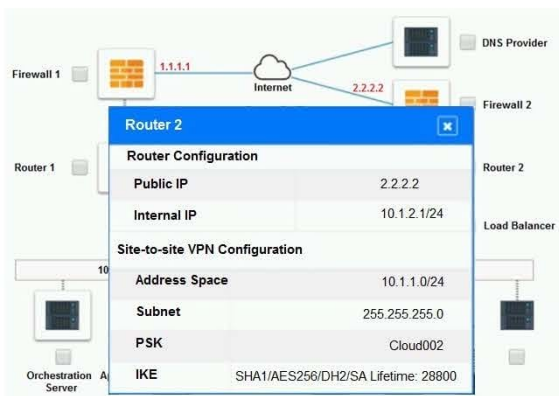
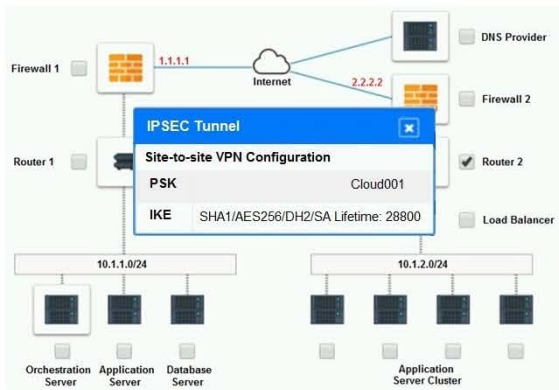
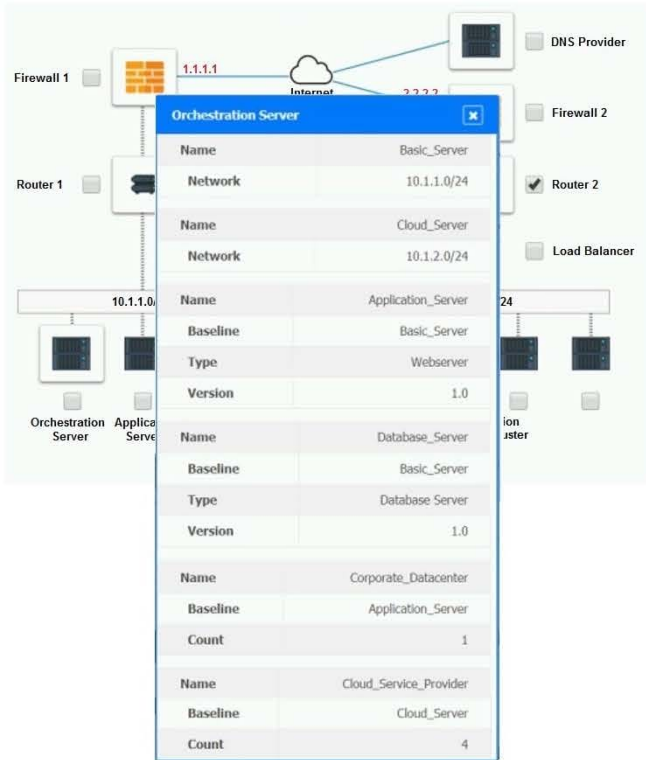
1.
Identify the correct options to provide adequate configuration for hybrid cloud architecture.

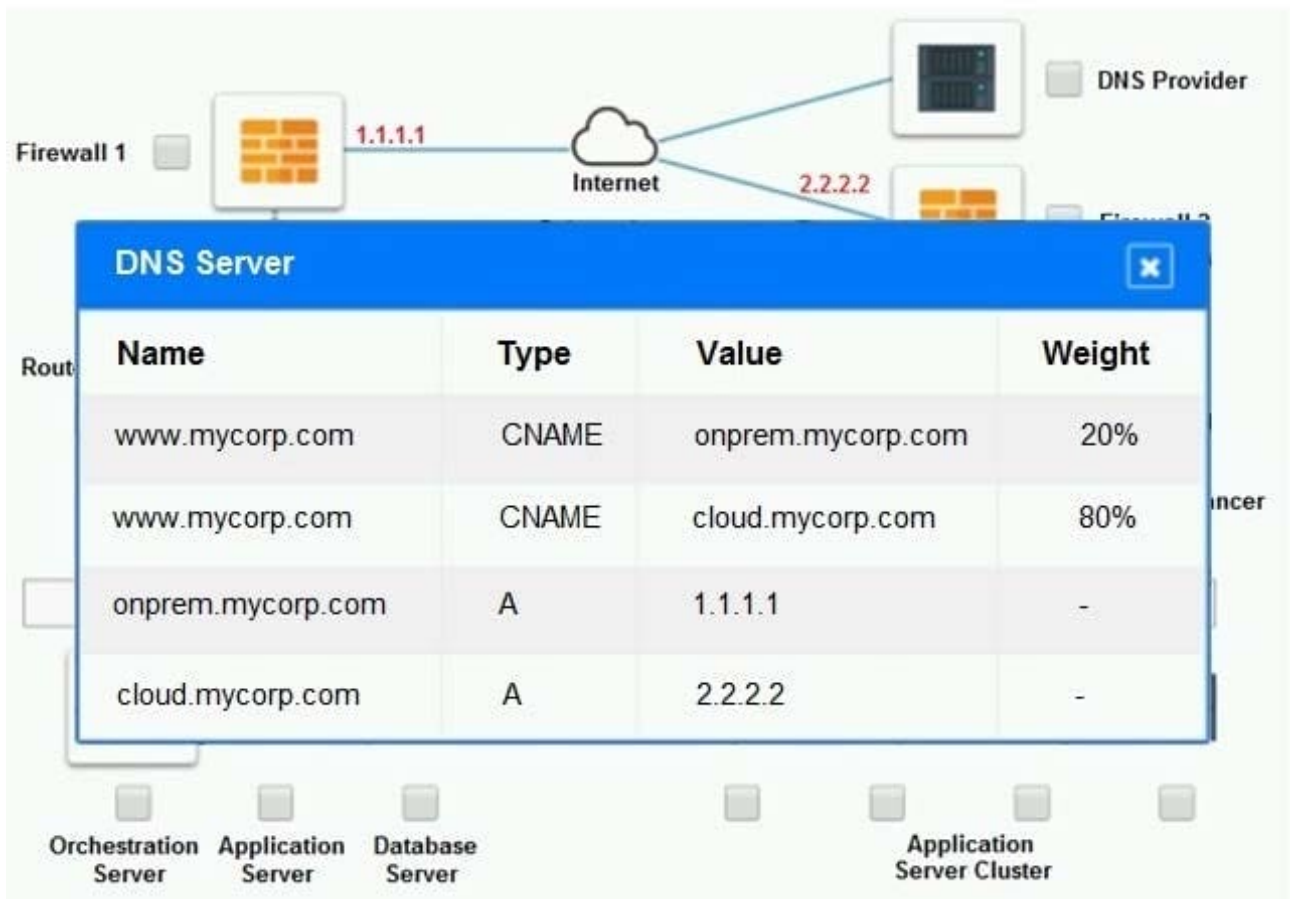
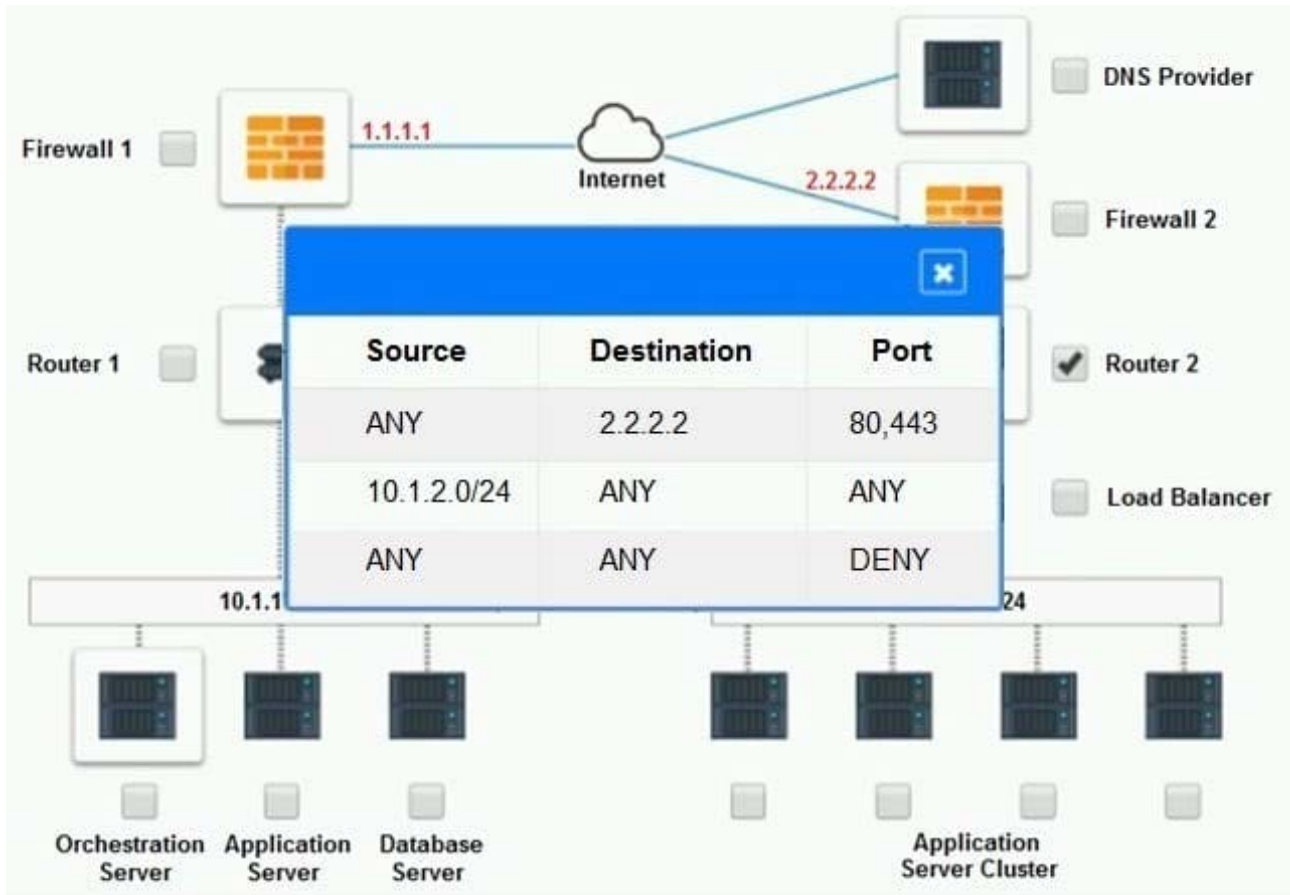
2.
If at any time you would like to bring back the initial state of the simulation, please click the Reset All button.

Part 1:

Cloud Hybrid Network Diagram







Part 2:

Only select a maximum of TWO options from the multiple choice question

- Deploy a Replica of the Database Server in the Cloud Provider.
- Update the PSK (Pre-shared key) in Router 2.
- Update the A record on the DNS from 2.2.2.2 to 1.1.1.1.
- Promote deny All to allow All in Firewall 1 and Firewall 2.
- Change the Address Space on Router 2.
- Change internal IP Address of Router 1.
- Reverse the Weight property in the two CNAME records on the DNS.
- Add the Application Server at on-premises to the Load Balancer.

A. Check the answer in explanation.

Correct Answer: A

Change the Address Space on Router2 Update the PSK (Pre-shared key in Router2)

[Latest CV0-003 Dumps](#)

[CV0-003 VCE Dumps](#)

[CV0-003 Exam Questions](#)