

# DES-1241<sup>Q&As</sup>

Specialist - Platform Engineer, PowerStore

## Pass Dell DES-1241 Exam with 100% Guarantee

Free Download Real Questions & Answers **PDF** and **VCE** file from:

<https://www.pass2lead.com/des-1241.html>

100% Passing Guarantee  
100% Money Back Assurance

Following Questions and Answers are all new published by Dell Official Exam Center

-  **Instant Download** After Purchase
-  **100% Money Back** Guarantee
-  **365 Days** Free Update
-  **800,000+** Satisfied Customers



**QUESTION 1**

What describes the ICM and ICD networks?

- A. Address type is dynamic and automatically reconfigured on discovery results
- B. They are NOT encrypted
- C. Address type is persistent throughout the life of the cluster and CANNOT to be modified
- D. They are encrypted with IPsec

Correct Answer: D

---

**QUESTION 2**

Which reference source provides service information and FRU procedures for the Dell EMC PowerStore?

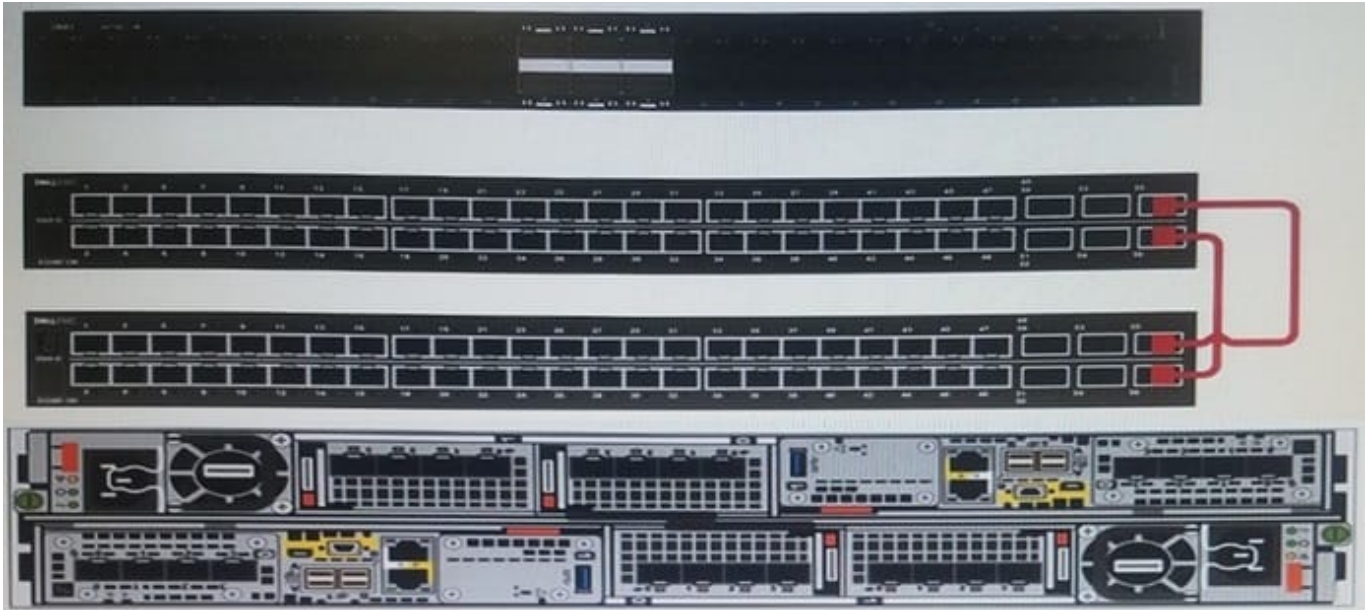
- A. SolVe Tool
- B. Dell EMC PowerStore Product Page
- C. PowerStore Manager help
- D. DELL EMC Online Support

Correct Answer: B

Reference: [https://downloads.dell.com/manuals/common/pwrstr-evntsalrtsg\\_en-us.pdf](https://downloads.dell.com/manuals/common/pwrstr-evntsalrtsg_en-us.pdf)

---

**QUESTION 3**



Refer to the exhibit.

What type of cable is used for the ToR switch configuration shown for the S5248F-ON switches?

- A. 10 GigE Cat 6 Ethernet RJ-45
- B. 25 GigE Twinax
- C. 100 GigE QSFP28
- D. 10 GigE SFP optical cable

Correct Answer: C

Reference: <https://www.dellemc.com/resources/en-us/asset/technical-guides-support-information/solutions/h18242-read-y-stack-powerstore-dg.pdf?dgc=SMandcid=170850andlid=spr3492306896andlinkId=93885839>

#### QUESTION 4

A Storage Administrator wants to upgrade a two appliance Dell EMC PowerStore cluster. Which Commit options need to be chosen to have all appliances upgraded in the last step?

- A. Appliance, Cluster
- B. Appliance, Appliance
- C. Cluster, Appliance
- D. Cluster, Cluster

Correct Answer: B

#### QUESTION 5

A Storage Administrator needs to connect through SSH to run svc commands. How is the SSH session configured?

- A. Appliance IP address using port 22
- B. NAS server IP address using port 26
- C. NAS server IP address using port 22
- D. Appliance IP address using port 26

Correct Answer: C

---

#### QUESTION 6

What does the output of the command "svc\_diag list --basic" show?

- A. Failover status
- B. Master\_appliance\_ID
- C. License status
- D. Boot mode

Correct Answer: B

---

#### QUESTION 7

What describes the power requirements for Dell EMC PowerStore?

- A. Lower model numbered systems require less AC line current than higher model numbered systems
- B. T models require less total power than X models
- C. X models require less total power than T models
- D. Lower model numbered systems require less input voltage (VAC) than higher model numbered systems

Correct Answer: A

Reference: <https://www.dell.com/support/manuals/pk/en/pkbsd1/powerstore/pwrstr-plang/power-requirements?guid=guid-21e142df-e22c-4bbc-8978-7c6124753654&lang=en-us>

---

#### QUESTION 8

Which port is used to SSH from one Dell EMC PowerStore appliance to another?

- A. 22
- B. 26

C. 443

D. 21

Correct Answer: A

Reference: [https://topics-cdn.dell.com/pdf/pwrstr-scg\\_en-us.pdf](https://topics-cdn.dell.com/pdf/pwrstr-scg_en-us.pdf)

---

#### QUESTION 9

A Storage Administrator has an existing single appliance Dell EMC PowerStore 3000T cluster. An additional PowerStore 9000T has been purchased to add into the existing cluster. How does the administrator proceed?

- A. Additional VLTi links on the ToR switching must be configured for the 9000T to support the increased inter-switch network load
- B. Add the new 9000T appliance into the cluster per the procedure; mixed models of the same type are supported
- C. Remove two of the four NVMe NVRAM drives from the 9000T the caching configuration of all clustered appliances must match
- D. The new appliance cannot be added to the cluster; appliance model and type must match when clustering appliances together

Correct Answer: A

---

#### QUESTION 10

When planning for a Dell EMC PowerStore T implementation, how many IP addresses are required for the storage network?

- A. 2
- B. 1
- C. 3
- D. 4

Correct Answer: C

Reference: [https://topics-cdn.dell.com/pdf/pwrstr-ntwk-plang\\_en-us.pdf](https://topics-cdn.dell.com/pdf/pwrstr-ntwk-plang_en-us.pdf) (22)

---

#### QUESTION 11

What is an alternative way to collect logs instead of using the Dell EMC PowerStore manager GUI?

- A. Data Collect using Service Container

- B. USB stick inserted into the system
- C. Data Collect using vCenter
- D. Discovery Utility

Correct Answer: A

Data Collection, Data Collects (DCs), or Service Data.

Reference: <https://www.dell.com/support/kbdoc/en-pk/000133407/powerstore-how-to-generate-and-collect-various-logs-from-powerstore>

---

### QUESTION 12

What is the maximum number of expansion enclosures that a single Dell EMC PowerStore appliance supports?

- A. 2
- B. 3
- C. 4
- D. 6

Correct Answer: B

Reference: <https://www.dellemc.com/resources/en-us/asset/data-sheets/products/storage/h18143-dell-emc-powerstore-family-spec-sheet.pdf> (1)

---

### QUESTION 13

While on-site installing a Dell EMC PowerStore system, the node A and ? embedded module fault LEDs are alternating blue and amber (blue for 3 seconds). What does this indicate?

- A. The system is booting
- B. Nodes are in service mode
- C. The system is not initialized
- D. Nodes are in degraded mode

Correct Answer: C

Reference: <https://www.dell.com/support/kbdoc/en-pk/000125739/powerstore-understanding-led-colors-and-states-for-troubleshooting>

---

### QUESTION 14

How many nodes are in the base enclosure?

- A. 2 nodes configured as Active-Standby
- B. 1 node with dual connectivity
- C. 1 node with high availability enabled
- D. 2 nodes configured as Active-Active

Correct Answer: D

Reference: <https://www.dell.com/support/manuals/pk/en/pkbsd1/powerstore-9000t/pwrstr-hwg/base-enclosure-component-overview?guid=guid-7914a554-6943-402e-bd38-3e893163657e&lang=en-us>

---

#### QUESTION 15

Which component is an FRU?

- A. DIMMs
- B. Embedded IO Module
- C. Nodes
- D. Battery Backup Unit

Correct Answer: A

Reference: [https://docs.oracle.com/cd/E79179\\_01/html/E80510/z40013331512040.html](https://docs.oracle.com/cd/E79179_01/html/E80510/z40013331512040.html)

[DES-1241 Practice Test](#)

[DES-1241 Exam Questions](#)

[DES-1241 Braindumps](#)