

DES-1721^{Q&As}

Specialist - Implementation Engineer-SC Series Exam

Pass EMC DES-1721 Exam with 100% Guarantee

Free Download Real Questions & Answers **PDF** and **VCE** file from:

<https://www.pass2lead.com/des-1721.html>

100% Passing Guarantee
100% Money Back Assurance

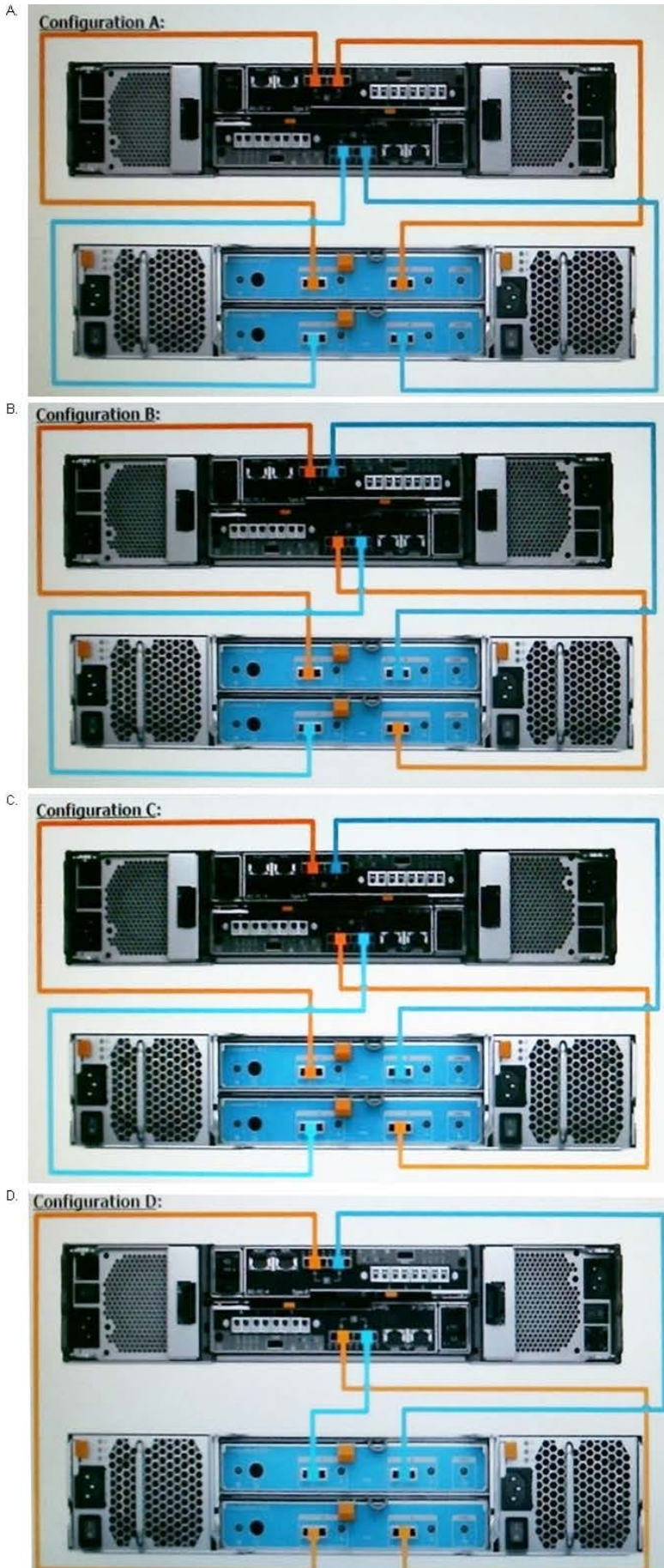
Following Questions and Answers are all new published by EMC
Official Exam Center

-  **Instant Download** After Purchase
-  **100% Money Back** Guarantee
-  **365 Days** Free Update
-  **800,000+** Satisfied Customers



QUESTION 1

Based on SAS back-end cabling best practices, which configuration represents how an SC4020 storage array with one SC220 expansion enclosure is cabled?



A. B. C. D.

Correct Answer: A

QUESTION 2

An administrator wants to configure an SC Series array to use Virtual Port Mode. What is a requirement to accomplish this task?

- A. I/O Controller cards must use a single-ID firmware version
- B. Activation license must be installed
- C. NPIV must be disabled on Fibre Channel switches
- D. Fibre Channel switches must use an arbitrated loop topology

Correct Answer: D

Reference <https://www.dell.com/support/manuals/lt/en/ltbsdt1/dell-compellent-sc4020/sc4020om-v8/requirements-for-virtual-port-mode?guid=guid-90fdb7bf-141b-4218-b3e5-2acb34acf90d&lang=en-us>

QUESTION 3

A customer is running the Dell Storage Manager (DSM) Suite as a software stack on Microsoft Windows. To reduce the Microsoft licensing costs, the customer wants to switch to the DSM Virtual Appliance. Which recommended deployment should the customer use?

- A. Configure as a Primary Data Collector
- B. Configure as a Remote Data Collector
- C. Migrate the DSM database manually
- D. Migrate from the existing Data Collector

Correct Answer: D

QUESTION 4

When planning the necessary Bandwidth for Remote Instant Replay what needs to be considered?

- A. Mismatched MTU
- B. FC Zoning between sites
- C. Volume QoS
- D. Snapshot frequency

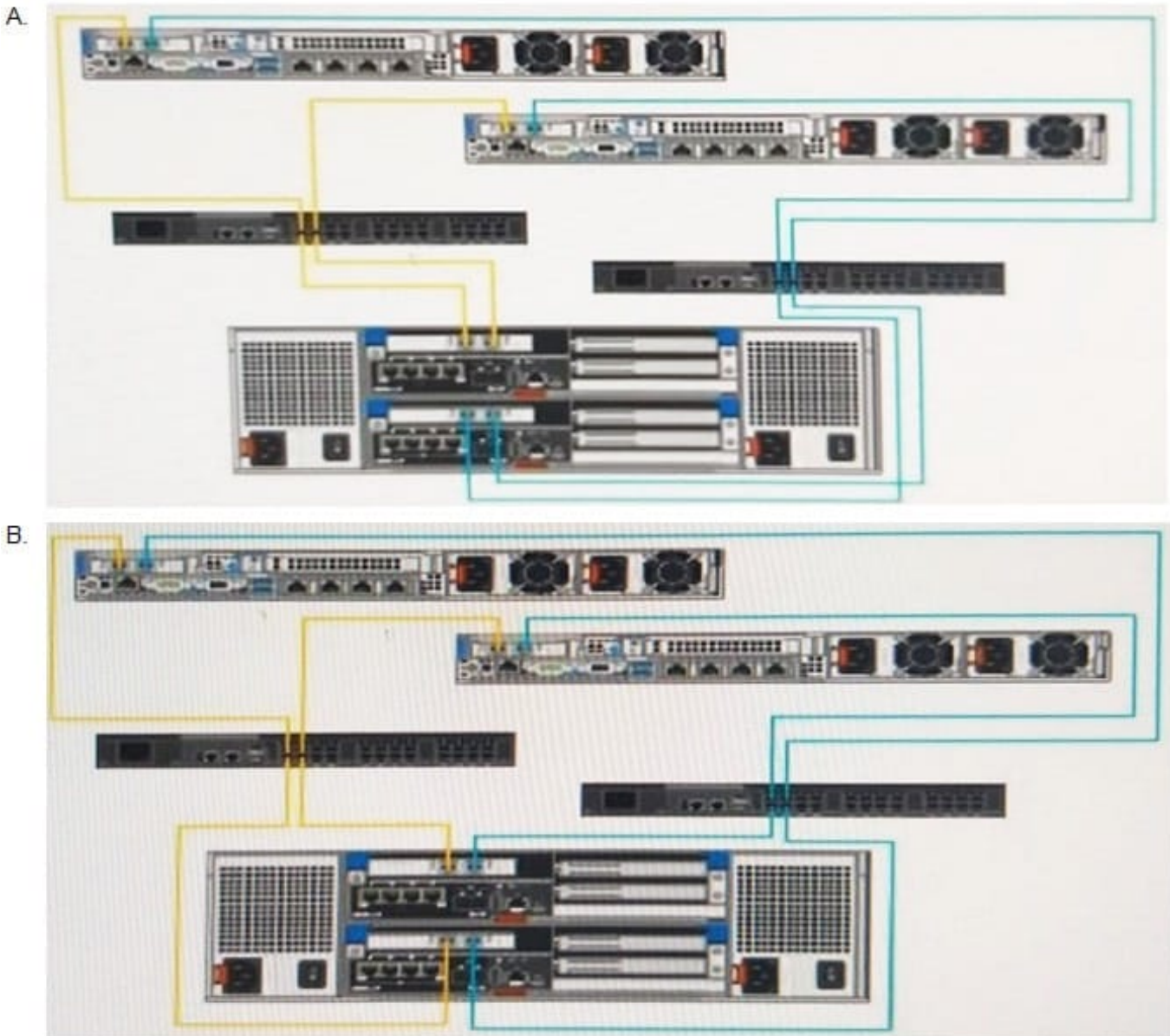
Correct Answer: D

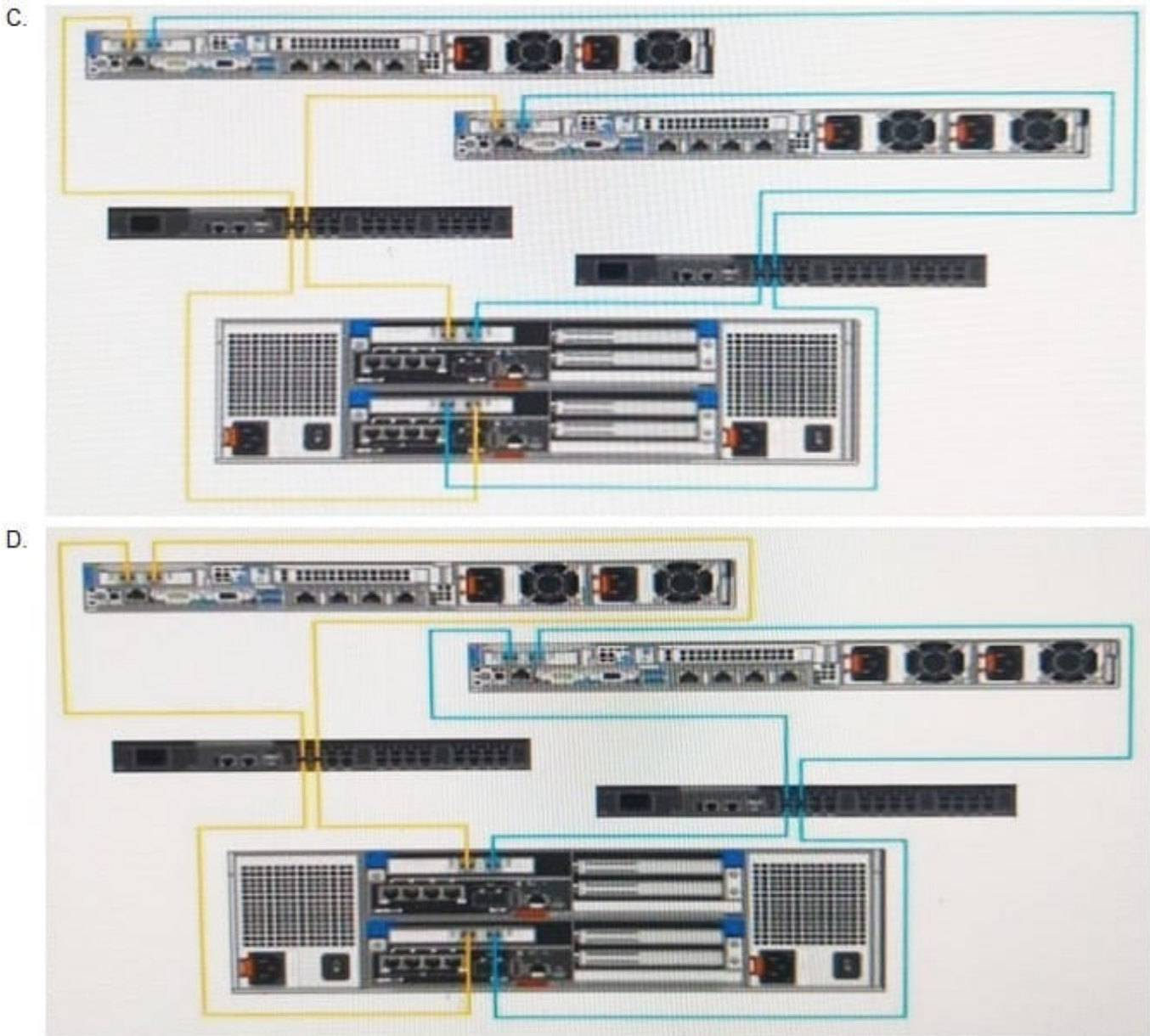
Reference: <https://www.sanstorageworks.com/datasheets/Compellent/Compellent-RIR-DS.pdf>

QUESTION 5

Refer to the exhibits.

Which is the correct front end and cabling for an SC7020 with 2 port FC connectivity?





A. Option A

B. Option B

C. Option C

D. Option D

Correct Answer: C

Reference: <https://www.dell.com/support/manuals/us/en/04/dell-compellent-sc4020/sc4020om-v8/two-iscsi-networks-using-the-embedded-ethernet-ports-on-a-storage-system-with-fibre-channel-storage~?guid=guid-55858fd3-2a28-4739-8eace60769d03438andlang=en-us>

QUESTION 6

A customer has a volume that was created with the wrong datapage size. What is the simplest and least disruptive method to change this volume's page size?

- A. Copy the volume, then mount the new volume
- B. Mirror the volume, then mount the mirrored volume
- C. Mirror the volume, then migrate to mirror
- D. Migrate the volume, then delete the source volume

Correct Answer: A

QUESTION 7

A customer wants to configure a threshold alert definition. Which types of definitions can be configured?

- A. Latency, Disks, and Replication
- B. Storage, Latency, and Disks
- C. Storage, Replication, and Hardware
- D. I/O Usage, Storage, and Replication

Correct Answer: D

Reference: <https://www.dell.com/storagehelp/dellstorageclient/2016R3.10/en-US/GUID-EF495710-B8B4-4763-884D-D5CA9C206767.html>

QUESTION 8

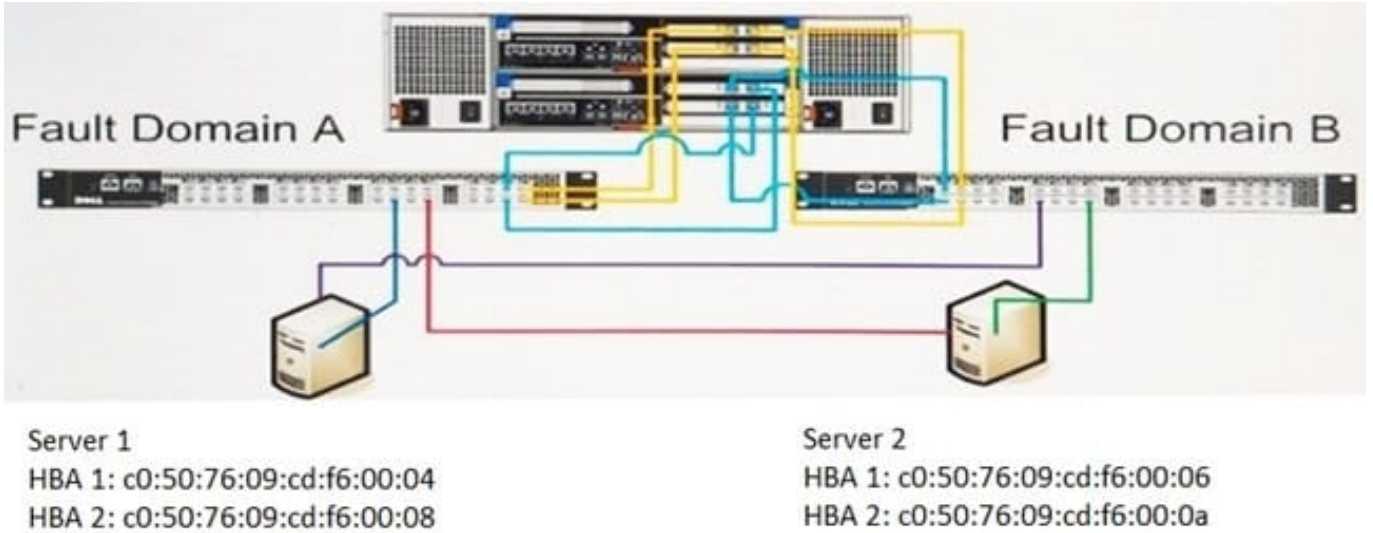
You recently added a second Storage Center to your network. Both systems were added to DSM, and you can ping the iSCSI ports of the remote system. You are planning to replicate between your two systems, but you cannot get the Replication Wizard to launch.

What item is missing?

- A. Data Progression is not running on both systems
- B. Deduplication is enabled on the source system
- C. Both systems do not have a QoS setting enabled
- D. Remote Instant Replay license has not been applied

Correct Answer: B

QUESTION 9



Refer to the exhibit.

The servers are zoned to best practices. The output of the switch is shown below:

```
switch:admin> zoneshow
zoneset Cool_vsan_20
Zone_A
c0:50:76:09:cd:f6:00:06
50:00:d3:10:00:ea:60:95
50:00:d3:10:00:ea:60:96
50:00:d3:10:00:ea:60:97
50:00:d3:10:00:ea:60:98

Zone_B
50:00:d3:10:00:ea:60:95
50:00:d3:10:00:ea:60:96
50:00:d3:10:00:ea:60:97
50:00:d3:10:00:ea:60:98
c0:50:76:09:cd:f6:00:0a

Zone_C
50:00:d3:10:00:ea:60:95
50:00:d3:10:00:ea:60:96
50:00:d3:10:00:ea:60:97
50:00:d3:10:00:ea:60:98

Zone_D
50:00:d3:10:00:ea:60:94
50:00:d3:10:00:ea:60:92
50:00:d3:10:00:ea:60:93
50:00:d3:10:00:ea:60:91
```

Which is the Physical Zone of Fault Domain B?

A. Zone_A

B. Zone_C

C. Zone_D

D. Zone_B

Correct Answer: D

QUESTION 10

You are deploying a new SC9000 system running Storage Center OS 7.2. At which drive size does the system require you to begin running dual redundancy on both SSDs and HDDs?

A. 2.0 TB and larger for SSDs

4.0 TB and larger for HDDs

B. 4.0 TB and larger for SSDs

2.0 TB and larger for HDDs

C. 4.0 TB and larger for SSDs

4.0 TB and larger for HDDs

D. 8.0 TB and larger for SSDs

2.0 TB and larger for HDDs

Correct Answer: B

Reference: https://topics-cdn.dell.com/pdf/storage-sc2000_release-notes4_en-us.pdf (P.4)

QUESTION 11

How many SC220 enclosures can be supported by an SC4020 storage array?

A. 7

B. 9

C. 14

D. 15

Correct Answer: A

Reference <https://usermanual.wiki/Dell/dellcompellentesc4020.2121632308.pdf>

QUESTION 12

You are required to install twenty-four (24) 3.5" 12 Gb disks on a deployed system. Which disk enclosure would support this?

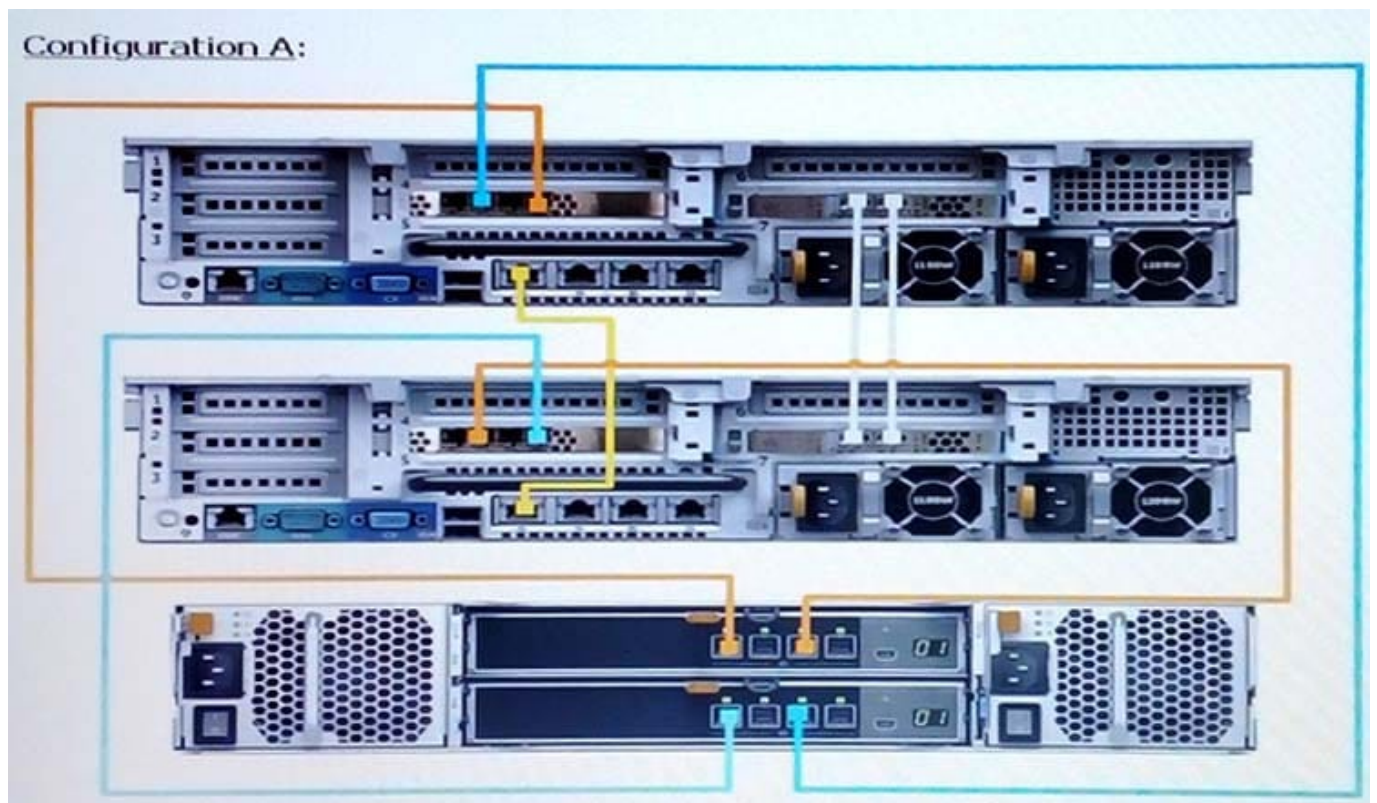
- A. SC420
- B. SC400
- C. SCv320
- D. SC460

Correct Answer: A

Reference: <https://www.dell.com/ai/business/p/storage-sc7020/pd>

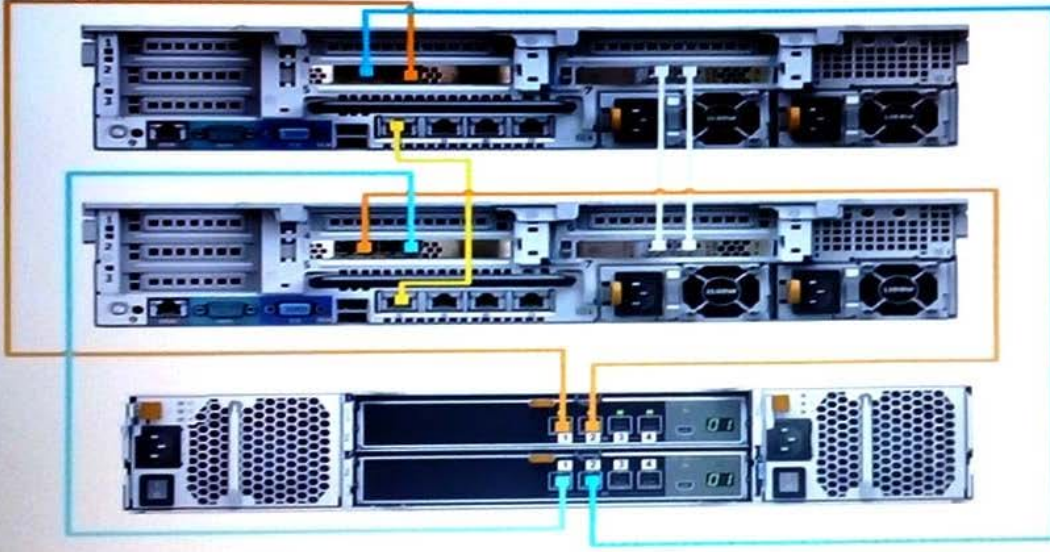
QUESTION 13

Based on best practices, which configuration represents how an SC9000 storage array with one SC420 expansion enclosure is cabled?

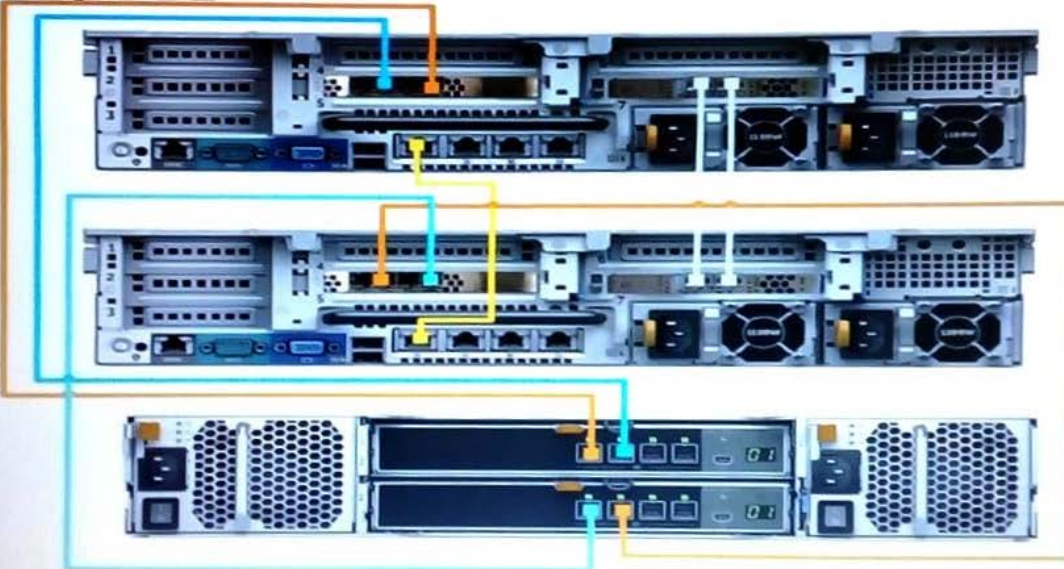


A.

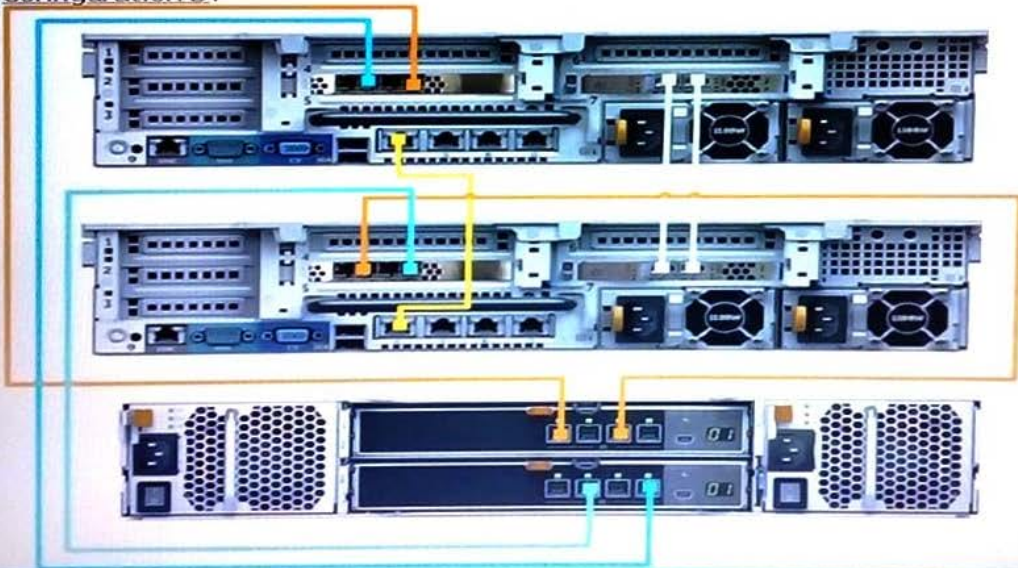
B. Configuration B:



C. Configuration C:



D. Configuration D:



B. C. D.

Correct Answer: C

QUESTION 14

Which operating system runs the Dell Storage Manager (DSM) as a virtual appliance?

- A. CentOS 7
- B. Windows Server 2012 R2
- C. VMware
- D. Windows Server 2010 R2

Correct Answer: C

Reference: <https://www.dell.com/support/manuals/pk/en/pkbsd1/storage-sc9000/dsm-2016-ig/dell-storage-manager-virtual-appliance-requirements?guid=guid-effab9c6-7f09-43a4-a836-f305dbc24253&lang=en-us>

QUESTION 15

An administrator wants to configure an SC Series array to use Virtual Port Mode. What is a requirement to accomplish this task?

- A. NPIV must be disabled on Fibre Channel switches
- B. I/O Controller cards must use a single-ID firmware version
- C. Fibre Channel switches must use a switched fabric topology
- D. Activation license must be purchased and installed

Correct Answer: D

[DES-1721 PDF Dumps](#)

[DES-1721 Practice Test](#)

[DES-1721 Braindumps](#)