

HPE6-A43^{Q&As}

Implementing Aruba Location Services

Pass HP HPE6-A43 Exam with 100% Guarantee

Free Download Real Questions & Answers **PDF** and **VCE** file from:

<https://www.pass2lead.com/hpe6-a43.html>

100% Passing Guarantee
100% Money Back Assurance

Following Questions and Answers are all new published by HP Official Exam Center

-  **Instant Download** After Purchase
-  **100% Money Back** Guarantee
-  **365 Days** Free Update
-  **800,000+** Satisfied Customers



QUESTION 1

A network engineer wants to access the Meridian Editor to make changes to a Meridian- powered app. Which address should the engineer type into the web browser?

- A. Meridian.com
- B. edit.meridianapps.com
- C. arubanetworks.com/meridian
- D. Meridian.arubanetworks.com

Correct Answer: B

QUESTION 2

An app developer wants to add the venue's logo to the top of the featured page for an app. Where in AppMaker should the developer add the logo?

- A. Theme
- B. Pages
- C. Featured
- D. Info

Correct Answer: B

QUESTION 3

How is ALE licensed?

- A. one enterprise license per controller
- B. one license per user
- C. one license per AP
- D. one license per server

Correct Answer: C

QUESTION 4

Which analytics tool uses Wi-Fi connections to gather information about clients, such as associations and unassociated clients?

- A. Aruba Beacons app
- B. ALE
- C. AirWave
- D. Aruba Sensor

Correct Answer: A

QUESTION 5

Which statement is correct about the power level of Aruba Beacons?

- A. The power level can be changed on a location beacon and a USB beacon, but not on a proximity beacon.
- B. The power level of a proximity beacon can be changed, but the power level of a location beacon cannot be changed.
- C. The power level can be changed for all Aruba Beacon modes and will determine coverage area.
- D. The power level cannot be changed on either a location or a proximity beacon, but can be changed on an Aruba Sensor and a USB beacon.

Correct Answer: C

QUESTION 6

A network engineer uses AppMaker to create a Meridian-powered app. Which items can be created within AppMaker?

- A. beacons placement
- B. proximity beacons
- C. campaigns
- D. analytics
- E. maps and placemarks

Correct Answer: CE

QUESTION 7

Which app can be used to move a beacon on a map?

- A. AppViewer
- B. AppMaker
- C. Beacons App

D. any Meridian app

Correct Answer: C

QUESTION 8

A network engineer plans a beacon deployment with Aruba blue dot location-based services. The deployment uses both battery-powered and USB beacons.

What is a primary difference between battery-powered beacons and USB beacons that is useful for the engineer to know for this deployment?

- A. USB beacons do not need to be connected to a power source, but battery-powered beacons do.
- B. Battery-powered beacons do not need to be connected to an external power source, but USB beacons do.
- C. Battery-powered beacons can be configured as location beacons. But USB beacons cannot.
- D. USB beacons can be remotely managed, but battery-powered beacons cannot.

Correct Answer: B

QUESTION 9

An app developer tests a campaign to ensure it triggers and provides a notification to the iPhone. The notification appears once on the device. The developer continues to test and 10 minutes later the developer tries to trigger the campaign to send the notification again to the device. The notification is not received on the device.

What does the developer need to do to make the campaign trigger and send another notification? (Select two.)

- A. Reset the campaign in the Beacons Apps.
- B. Reset the campaign in the Meridian Editor.
- C. Reset the beacon with the Beacons Apps.
- D. Set the campaign as ready in the Meridian Editor.
- E. Bring the device within range of the proximity beacons.

Correct Answer: CE

QUESTION 10

A Meridian-app developer wants to create an AppMaker app for an airport that includes placemarks and amenities on the map. What must the app developer consider?

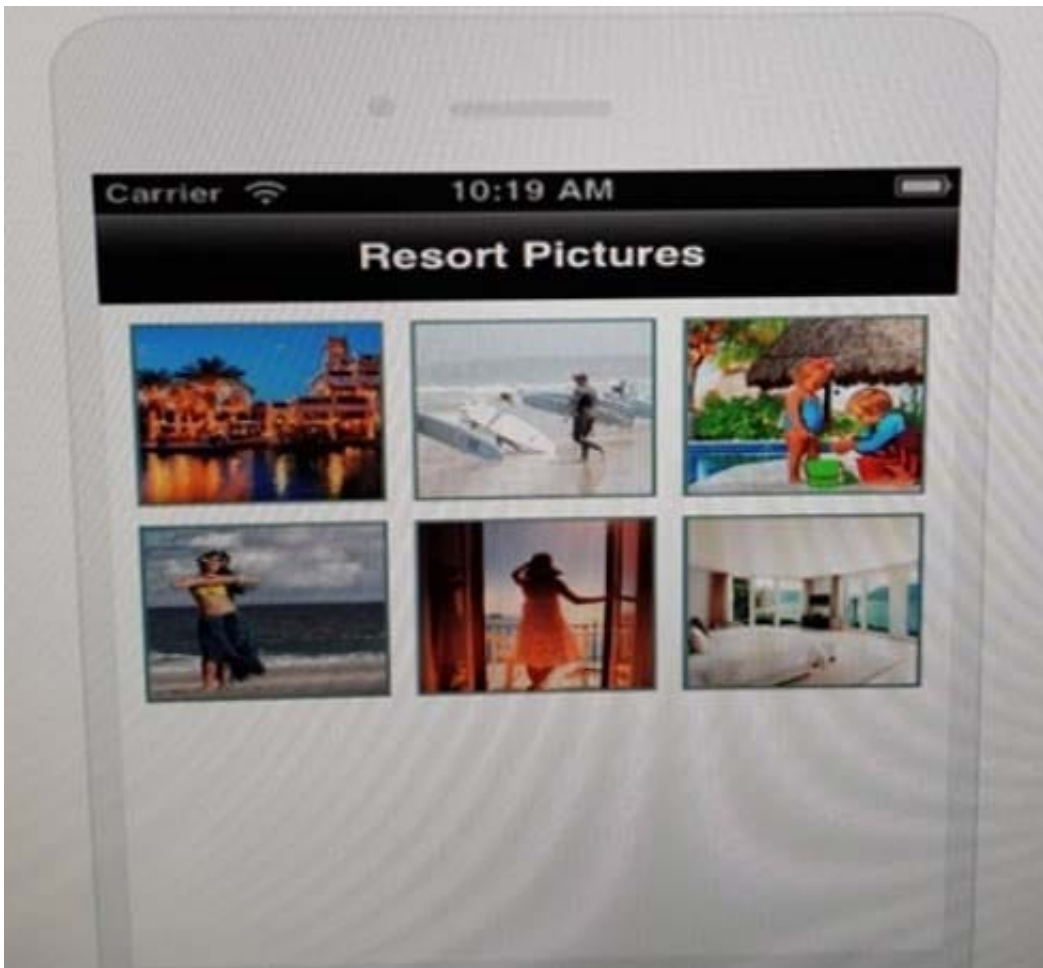
- A. Placemarks can be seen on the map, but not amenities.
- B. Placemarks should have unique names.

- C. Amenities must have unique names.
- D. Amenities will be searchable, but not placemarks.

Correct Answer: D

QUESTION 11

Which page type was selected in AppMaker to produce the page shown in the exhibit?



- A. Web Page
- B. List
- C. Slide Show
- D. Tabbed View

Correct Answer: C

QUESTION 12

Campaigns can be tied to which beacons types?

- A. placed location beacon
- B. placed proximity beacon
- C. unplaced location beacon
- D. unplaced proximity beacon

Correct Answer: B

QUESTION 13

A network engineer plans an Aruba BLE beacons deployment for an airport to provide location and proximity for the airport's app. What does the engineer need to consider about Aruba BLE beacons?

- A. They enable blue dot on iOS and Android AppMaker venue apps.
- B. They require GPS-enabled devices to configure beacons with the Beacons App.
- C. They require iOS 4.01 or later to configure beacons with the Beacons App.
- D. They use Wi-Fi APs and controllers for location and notifications.

Correct Answer: D

QUESTION 14

Exhibit: Which type of information can be determined from the Meridian app shown in the exhibit?



- A. The app is non-location aware.
- B. The beacons are in proximity mode.
- C. The beacons are deployed in this location.
- D. The beacons are in location mode.

Correct Answer: B

QUESTION 15

An app developer wants to create a new campaign for a venue app. What is the first step the developer must take to create the campaign?

- A. Click on the proximity beacon on the map and associate it to a campaign.
- B. Create a title for the campaign in the Meridian Editor.
- C. Configure a proximity beacon for the campaign with the Beacons App.
- D. Create a name for the campaign with the Beacons App.

Correct Answer: B

[HPE6-A43 VCE Dumps](#)

[HPE6-A43 Study Guide](#)

[HPE6-A43 Exam Questions](#)