

# HPE6-A72<sup>Q&As</sup>

Aruba Certified Switching Associate Dumps

**Pass HP HPE6-A72 Exam with 100% Guarantee**

Free Download Real Questions & Answers **PDF** and **VCE** file from:

<https://www.pass2lead.com/hpe6-a72.html>

100% Passing Guarantee  
100% Money Back Assurance

Following Questions and Answers are all new published by HP Official Exam Center

-  **Instant Download** After Purchase
-  **100% Money Back** Guarantee
-  **365 Days** Free Update
-  **800,000+** Satisfied Customers



**QUESTION 1**

DRAG DROP

Match each description to the correct term.

Select and Place:

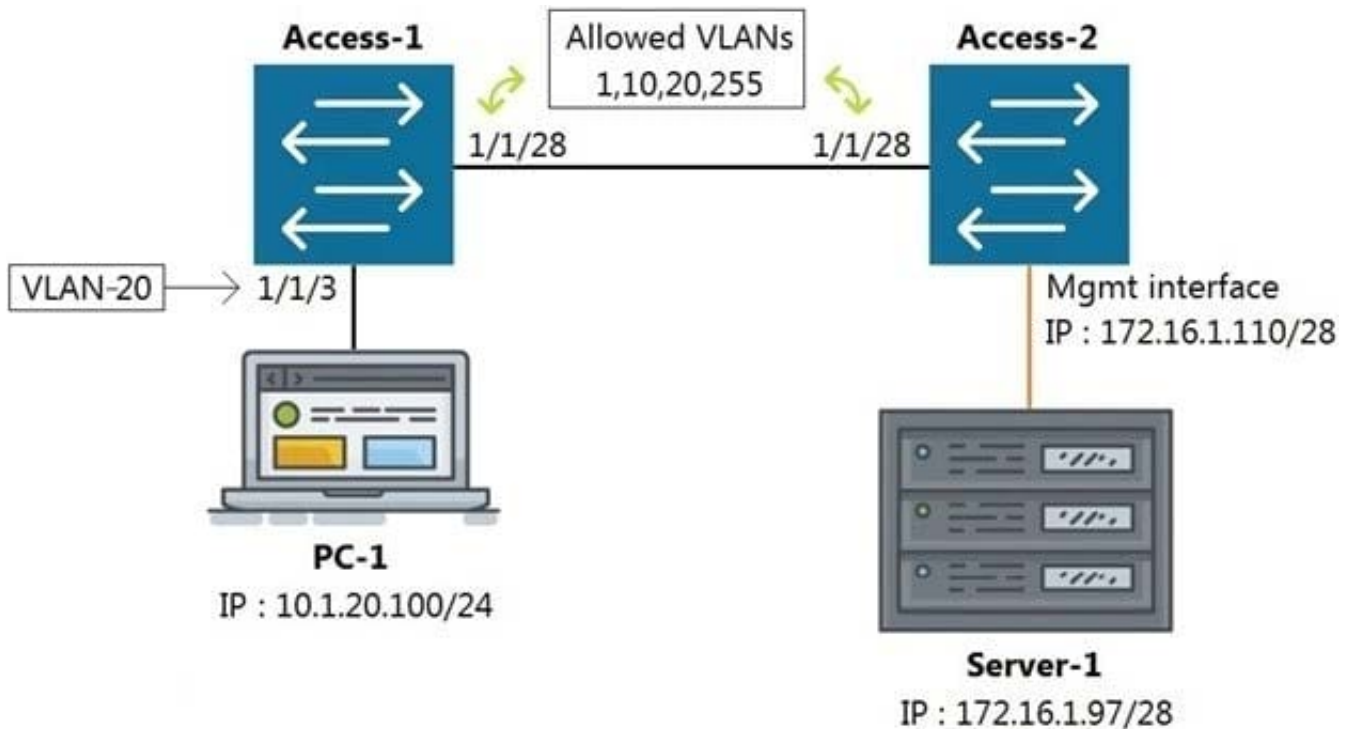
Term	Description
ASIC	<input type="text"/>
Control Plane	receives and sends frames by using Application-Specific Integrated Circuits (ASICs)
Data Plane	<input type="text"/>
Management Plane	switches packets faster than using software
	<input type="text"/>
	determines packet forwarding using routing, switching, security, and flow optimization
	<input type="text"/>
	handles switch monitoring

Correct Answer:

Term	Description
<input type="text"/>	<input type="text"/>
<input type="text"/>	Data Plane receives and sends frames by using Application-Specific Integrated Circuits (ASICs)
<input type="text"/>	ASIC switches packets faster than using software
<input type="text"/>	Control Plane determines packet forwarding using routing, switching, security, and flow optimization
<input type="text"/>	Management Plane handles switch monitoring

**QUESTION 2**

Refer to the exhibit.



All switches are running Aruba OS-CX. While working in the terminal of Access-2, you are unable to reach Server-1 using SSH. What is the correct command to ping Server-1 from Access-2 to test reachability?

- A. Access-2# ping6 172.16.1.97 vrf mgmt
- B. Access-2# ping 172.16.1.97
- C. Access-2# ping 172.16.1.97 vrf default
- D. Access-2# ping 172.16.1.97 vrf mgmt

Correct Answer: D

### QUESTION 3

Which statement is true regarding modern switching requirements?

- A. Most older legacy switches had high port bandwidth utilization and were future proof designed to meet today's power-over-Ethernet needs.
- B. Requirements for PoE are normally addressed using AC to DC power adapters. Concerns for port security for IoT devices are usually addressed using default wired encryption that all 802.3 Ethernet switches provide.
- C. While APs are common, most clients are still docked and only require traditional wired connections with only the occasional dedicated PoE switch to provide power for the low number of devices needed.
- D. Clients tend to prefer wireless connections, raising the need for PoE port access. There is also a growing amount of IoT devices that require security and port authentication options.

Correct Answer: D

**QUESTION 4**

What are two methods for remotely managing an Aruba AOS-CX switch? (Choose two.)

- A. SNMPv2c
- B. HTTPS
- C. USB-C console
- D. Telnet
- E. SSH

Correct Answer: BE

---

**QUESTION 5**

The following command is issued:

```
Switch# checkpoint rollback start
```

What is the result?

- A. The command will fail because rollback commands must be issued from global-config mode.
- B. The switch will revert the running-configuration to the checkpoint called "start" without a reboot.
- C. The command will fail because it is incomplete.
- D. The switch will use the checkpoint "rollback" as the starting configuration on next reboot.

Correct Answer: B

---

**QUESTION 6**

What are the benefits of a 3-Tier design over a 2-Tier? (Choose two.)

- A. Offloading processing from the Core without routing at the Access layer.
- B. Can use lower speed links between Core to Aggregation and Aggregation to Access given the use of an Aggregation layer.
- C. Lowering the cost of a deployment due to needing less switches overall.
- D. Better scalability in a campus with a large number of buildings.
- E. Gaining the flexibility to connect the Data-Center to any Access layer switch.

Correct Answer: AD

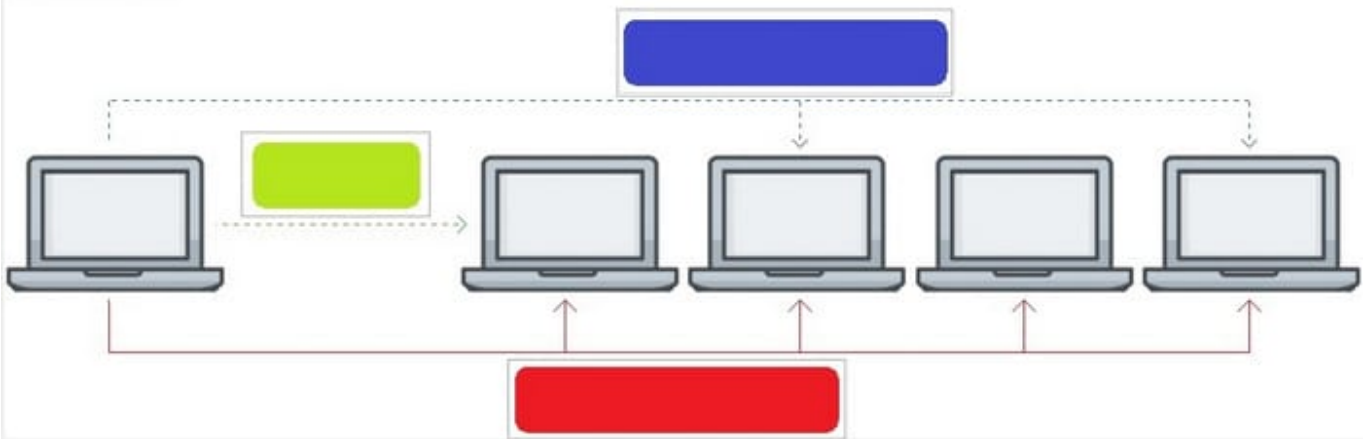
**QUESTION 7**

HOTSPOT

Click on the colored box that corresponds with the line that best represents Multicast traffic flow.

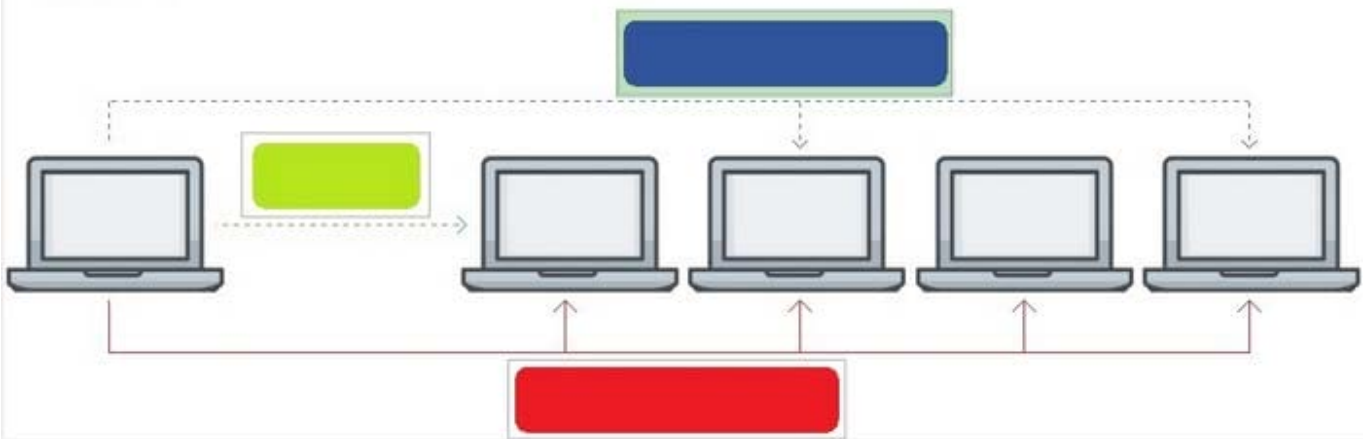
Hot Area:

**Answer Area**



Correct Answer:

**Answer Area**



Blue Box

**QUESTION 8**

Refer to the exhibit.

```
Access-1# debug l2mac event
Access-1# debug destination buffer
Access-1# page
```

```
show debug buffer
```

```
-----
-----
2020-05-06:22:32:52. 601427|l2mac-mgrd|LOG_DEBUG|AMM|-|L2MAC|L2MAC_EVENT|macmgr_m
ac_manager_handle_mac_event(1311), MAC=00:50:79:66:68:01, VLAN=1, Port=1/1/1 is
trying to be inserted
2020-05-06:22:32:52. 602027|l2mac-mgrd|LOG_DEBUG|AMM|-|L2MAC|L2MAC_EVENT|macmgr_m
ac_manager_handle_mac_event(1328), MAC=00:50:79:66:68:01 was successfully inserted
```

What command will display the debug l2mac events?

- A. show module L2MAC
- B. show debug terminal
- C. show debug buffer module L2MAC
- D. show debug all

Correct Answer: C

Reference: <https://community.arubanetworks.com/blogs/esupport1/2021/03/17/aos-cx-debugging-mac-address-movement>

## QUESTION 9

Your customer has 349 users in a two-story building.

What are two benefits of a 2-Tier design? (Choose two.)

- A. Layer 2 and Layer 3 protocols run close to the endpoints to better implement ACL and QoS policy at the edge.
- B. Improved performance by offloading processing from the Access layer to the Core.
- C. Use of layer 2 switches at the access layer can process and route traffic from attached APs.
- D. Support for WAN/MPLS, Internet, and Data Center directly on the Collapsed core.
- E. Provides a more cost effective solution given that no additional switches are required for a third tier.

Correct Answer: AE

**QUESTION 10**

ServiceOS login: admin

SVOS> password

Enter password: \*\*\*\*\*

Confirm password: \*\*\*\*\*

The login password to access an Aruba AOS-CX was lost. After connecting to the switch console port, a reboot is performed and the Service OS console is accessed as shown above.

What is the default password that is required for the admin account while under the Service OS console?

- A. No password is set for this account.
- B. "password"
- C. "forgetme!"
- D. The same login password that has lost originally.

Correct Answer: C

Reference: [https://www.arubanetworks.com/techdocs/ArubaOS\\_83\\_Web\\_Help/Content/ArubaFrameStyles/Management\\_Uutilities/enab\\_radsec\\_reset\\_admin\\_enabl\\_pwd.htm](https://www.arubanetworks.com/techdocs/ArubaOS_83_Web_Help/Content/ArubaFrameStyles/Management_Uutilities/enab_radsec_reset_admin_enabl_pwd.htm)

---

**QUESTION 11**

Aruba Access Points tunnel traffic in a campus to the Mobility Controller using which protocol?

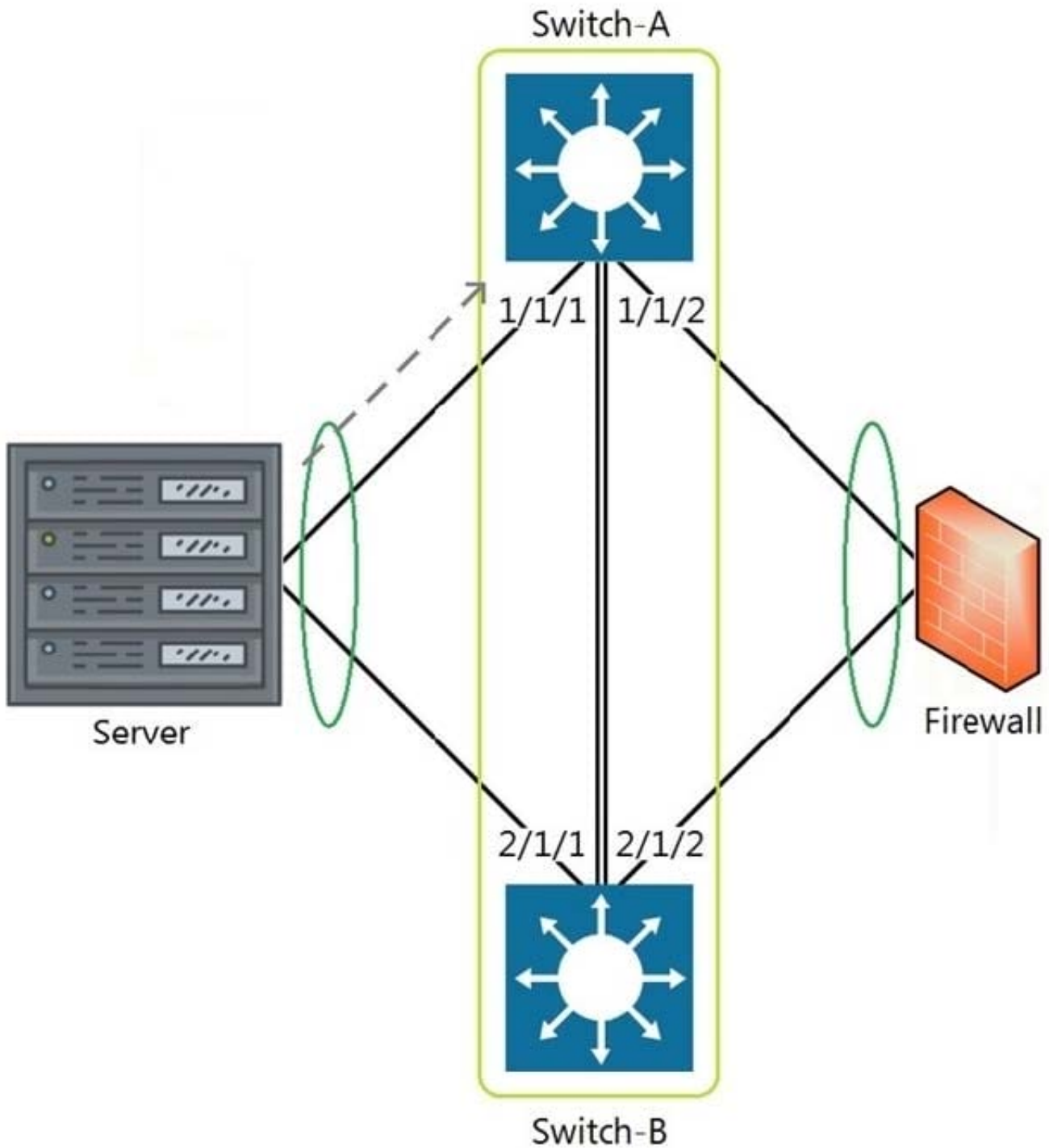
- A. Control and Provisioning of Wireless Access Points (CAPWAP)
- B. Generic Routing Encapsulation (GRE)
- C. Lightweight Access Point Protocol (LWAPP)
- D. Process Application Programming Interface (PAPI)

Correct Answer: B

---

**QUESTION 12**

Refer to the exhibit.



The above scenario shows a packet from the Server destined for the Firewall. Switch-A and Switch-B are bundled as VSF stack. The LAG between the VSF stack and the firewall indicates a hash function to forward the packet on port 2/1/2. Which statement is true regarding how Switch-A will forward the packet?

- A. Switch-A will forward the packet on port 1/1/2. VSF will override the typical LAG hash function used for the physical interface selection.
- B. Switch-A will drop the packet. Multi-Chassis lag to multi-chassis lag is not a supported feature of VSF.
- C. Switch-A will encapsulate the packet using GRE to forward to Switch-B in order for the packet to egress on port 2/1/2 per the hash function.



D. Switch-A will forward the packet along the VSF link to Switch-B so that it will egress on port 2/1/2 per the hash function.

Correct Answer: D

**QUESTION 13**

DRAG DROP

Match each network protocol to the correct default listening port and transport protocol. Not all answers will be used.

Select and Place:

**Default Port and Transport protocol**

TCP 20, TCP 21

TCP 23

TCP 53

TCP 443

UDP 20, UDP 21

UDP 23

UDP 53

UDP 67

**Network protocol**

DNS

FTP

HTTPS

Telnet

DHCP

Correct Answer:

**Default Port and Transport protocol**

TCP 20, TCP 21

FTP

TCP 23

Telnet

TCP 53

TCP 443

HTTPS

UDP 20, UDP 21

UDP 23

UDP 53

DNS

UDP 67

DHCP

**Network protocol**

**QUESTION 14**

Which command can be used to find the serial number of an Aruba OS-CX switch?

- A. The command inventory
- B. The command version
- C. The command show running-configuration
- D. The command show system

Correct Answer: D

**QUESTION 15**

Which field in the IPv4 header indicates whether the IP packet carries TCP or UDP traffic?

- A. Protocol
- B. IHL

C. TTL

D. Identification

Correct Answer: A

[HPE6-A72 PDF Dumps](#)

[HPE6-A72 VCE Dumps](#)

[HPE6-A72 Practice Test](#)