

HPE6-A80^{Q&As}

Aruba Certified Design Expert Written

Pass HP HPE6-A80 Exam with 100% Guarantee

Free Download Real Questions & Answers **PDF** and **VCE** file from:

<https://www.pass2lead.com/hpe6-a80.html>

100% Passing Guarantee
100% Money Back Assurance

Following Questions and Answers are all new published by HP Official Exam Center

-  **Instant Download** After Purchase
-  **100% Money Back** Guarantee
-  **365 Days** Free Update
-  **800,000+** Satisfied Customers



QUESTION 1

A hospital needs a Better way to track its inventory Including wireless medical devices that are moved around the site a lot. Which solution meets these needs?

- A. Aruba asset tags and beacons
- B. Aruba beacons. APs. and AirWave
- C. Aruba beacons and Meridian
- D. Aruba asset tags, APs; and Meridian

Correct Answer: C

QUESTION 2

An architect needs to plan a Mobility Master (MM) solution for a customer Requirements include:

*

redundancy for the MM

*

redundancy for the MCS (seamless failover if up to one fails)

The wireless network consists of

*

total APs - 300

*

total wireless devices = 20,000

*

total MCs = 10

The customer wants the most cost-effective plan that meets the requirements.

Which plan for MMs should the architect select?

A.

1 MM-HW-5K and 1 MM-VA-1K

B.

2 MM-HW-5K

C.

1 MM-HW-5K and 1 MM-HW-1K

D.

2 MM-HW-1QK

Correct Answer: D

QUESTION 3

In which scenario do Aruba CX 6400 Series switches, but not Aruba 6300M Series switches, meet the needs for a wired upgrade?

A. The customer requires switches in the same closet to operate together as a single switch for Link Aggregation but to be managed as separate devices.

B. The customer requires enhanced redundancy at the access layer and wants to ensure that each switch can continue to operate even if a power supply fails

C. The customer requires each access layer switch to support at least 25Gbps on its fiber uplinks at all times; including if up to one uplink fails.

D. The customer has recently deployed Aruba AP-535 APs and is concerned about a future-proof wired edge that will continue to support expanding bandwidth requirements.

Correct Answer: A

QUESTION 4

A mall requires a wireless network upgrade to 802.11ac. The company that owns the mall wants to provide the APs for the entire mall. However, several of the larger national chain retailers with spaces in the mall want to offer wireless services with their own SSIDs. These individual retailers also have their own wireless guest services and wireless client devices. They have their own corporate infrastructure and want to handle all of this wireless traffic on their own, including terminating the traffic on their own controllers. The mall requires redundancy for its services, but the retailers do not.

Which plan for mobility controllers (MCs) and mobility master (MM) meets the needs of this scenario?

A. a pair of MMs for the mall company, but not MCs: MMs control one MC for each retailer with its own SSIDs

B. two MCs for the mall company and for all of the retailers, both controlled by the same pair of MMs

C. two MCs for the mall company controlled by a pair of MMs; one standalone MC for each retailer with its own SSIDs

D. two MCs for the mall company and one MC for each retailer with its own SSIDs, all controlled by the same pair of MMs

Correct Answer: A

QUESTION 5

Refer to the exhibit.

A customer has an existing network with ArubaOS switches, Aruba 7205 controller, and 802.11ac APs. The customer needs a wired upgrade for their campus network and wireless upgrade with 802.11ax APs and would like to get all the functions of AP.

The customer has one building with 3 floors with the following wired devices,

*

8 printers

*

security cameras

The architect plans to propose 75 AP-535s.

The security cameras are a high definition pan-tilt-zoom with heaters for harsh environments that require more than 45 W to function,

Which exhibit shows an access switch that meets the customer needs?

A.

Option A

B.

Option B

C.

Option C

D.

Option D

Correct Answer: D

* 200 VOIP phones

* 8 printers

* security cameras

The architect plans to propose 75 AP-535s.

The security cameras are a high definition pan-tilt-zoom with heaters for harsh environments that require more than 45 W to function,

Which exhibit shows an access switch mat meets the customer needs?

Ⓐ. Quotation - Composite View

Line#	Part Number	Description	Manufacturer	Unit Price
1.0	JZ337A	Aruba AP-535 (US) Unified AP	Hewlett Packard Enter...	\$1,570.00
1.1	HG6E5E	Aruba 1Y FC NBD Exch AP 535 SVC [for JZ337A]	Hewlett Packard Enter...	\$66.00
1.2	JZ370A	AP-MNT-MP10-A AP mount bracket 10-pack A [split order]	Hewlett Packard Enter...	\$205.00
2.0	JZ337A	Aruba AP-535 (US) Unified AP	Hewlett Packard Enter...	\$1,570.00
2.1	HG6E5E	Aruba 1Y FC NBD Exch AP 535 SVC [for JZ337A]	Hewlett Packard Enter...	\$66.00
2.2	R3115A	AP-MNT-A AP mount bracket individual A: suspended ceilin...	Hewlett Packard Enter...	\$30.00
3.0	JL665A	Aruba 6300F 48G CL4 PoE 4SFP56 Switch	Hewlett Packard Enter...	\$11,199.00
3.1	JL665A	ABA INCLUDED: Power Cord - U.S. localization	Hewlett Packard Enter...	incl.
3.2	HRSU1E	HPE 1Y FC NBD Exch Aruba6300F 48 PoE SVC [for JL665A]	Hewlett Packard Enter...	\$559.00
3.3	H8XE6E	HPE Aruba 6x00N800x Install Swt SVC [for JL665A]	Hewlett Packard Enter...	\$1,000.00
3.4	J9150D	Aruba 10G SFP+ LC SR 300m MMF Transceiver	Hewlett Packard Enter...	\$1,040.00

Ⓑ. Quotation - Composite View

Line#	Part Number	Description	Manufacturer	Unit Price
1.0	JL726A	Aruba 6200F 48G 4SFP+ Switch	Hewlett Packard Enter...	\$5,219.00
1.1	JL726A	ABA INCLUDED: Power Cord - U.S. localization	Hewlett Packard Enter...	incl.
1.2	HR1E2E	Aruba 1Y FC NBD Exch 6200F 48G SVC [for JL726A]	Hewlett Packard Enter...	\$214.00
1.3	H8XE6E	HPE Aruba 6x00N800x Install Swt SVC [for JL726A]	Hewlett Packard Enter...	\$1,000.00
1.4	J9150D	Aruba 10G SFP+ LC SR 300m MMF Transceiver	Hewlett Packard Enter...	\$1,040.00
2.0	JZ337A	Aruba AP-535 (US) Unified AP	Hewlett Packard Enter...	\$1,570.00
2.1	HG6E5E	Aruba 1Y FC NBD Exch AP 535 SVC [for JZ337A]	Hewlett Packard Enter...	\$66.00
2.2	JZ370A	AP-MNT-MP10-A AP mount bracket 10-pack A [split order]	Hewlett Packard Enter...	\$205.00
3.0	JZ337A	Aruba AP-535 (US) Unified AP	Hewlett Packard Enter...	\$1,570.00
3.1	HG6E5E	Aruba 1Y FC NBD Exch AP 535 SVC [for JZ337A]	Hewlett Packard Enter...	\$66.00
3.2	R3115A	AP-MNT-A AP mount bracket individual A: suspended ceilin...	Hewlett Packard Enter...	\$30.00
Quote Total				

Ⓒ. Quotation - Composite View

Line#	Part Number	Description	Manufacturer	Unit Price
1.0	JZ337A	Aruba AP-535 (US) Unified AP	Hewlett Packard Enter...	\$1,570.00
1.1	HG6E5E	Aruba 1Y FC NBD Exch AP 535 SVC [for JZ337A]	Hewlett Packard Enter...	\$66.00
1.2	JZ370A	AP-MNT-MP10-A AP mount bracket 10-pack A [split order]	Hewlett Packard Enter...	\$205.00
2.0	JZ337A	Aruba AP-535 (US) Unified AP	Hewlett Packard Enter...	\$1,570.00
2.1	HG6E5E	Aruba 1Y FC NBD Exch AP 535 SVC [for JZ337A]	Hewlett Packard Enter...	\$66.00
2.2	R3115A	AP-MNT-A AP mount bracket individual A: suspended ceilin...	Hewlett Packard Enter...	\$30.00
3.0	JL659A	Aruba 6300M 48SR5 CL6 PoE 4SFP56 Switch	Hewlett Packard Enter...	\$15,499.00
3.1	HL6F6E	HPE 1Y FC NBD ExchAruba6300M48P SRPoESVC [for JL65...	Hewlett Packard Enter...	\$784.00
3.2	H8XE6E	HPE Aruba 6x00N800x Install Swt SVC [for JL659A]	Hewlett Packard Enter...	\$1,000.00
3.3	JL086A	Aruba X372 54VDC 680W Power Supply	Hewlett Packard Enter...	\$749.00
3.4	JL086A	ABA INCLUDED: Power Cord - U.S. localization	Hewlett Packard Enter...	incl.
3.5	J9150D	Aruba 10G SFP+ LC SR 300m MMF Transceiver	Hewlett Packard Enter...	\$1,040.00
Quote Total				

Ⓓ. Quotation - Composite View

Line#	Part Number	Description	Manufacturer	Unit Price
1.0	JL728A	Aruba 6200F 48G Class4 PoE 4SFP+ 740W Switch	Hewlett Packard Enter...	\$7,449.00
1.1	JL728A	ABA INCLUDED: Power Cord - U.S. localization	Hewlett Packard Enter...	incl.
1.2	HL2K8E	Aruba 1Y FC NBD Exch 6200F 48G 740POESVC [for JL728A]	Hewlett Packard Enter...	\$356.00
1.3	H8XE6E	HPE Aruba 6x00N800x Install Swt SVC [for JL728A]	Hewlett Packard Enter...	\$1,000.00
1.4	J9150D	Aruba 10G SFP+ LC SR 300m MMF Transceiver	Hewlett Packard Enter...	\$1,040.00
2.0	JZ337A	Aruba AP-535 (US) Unified AP	Hewlett Packard Enter...	\$1,570.00
2.1	HG6E5E	Aruba 1Y FC NBD Exch AP 535 SVC [for JZ337A]	Hewlett Packard Enter...	\$66.00
2.2	JZ370A	AP-MNT-MP10-A AP mount bracket 10-pack A [split order]	Hewlett Packard Enter...	\$205.00
3.0	JZ337A	Aruba AP-535 (US) Unified AP	Hewlett Packard Enter...	\$1,570.00
3.1	HG6E5E	Aruba 1Y FC NBD Exch AP 535 SVC [for JZ337A]	Hewlett Packard Enter...	\$66.00
3.2	R3115A	AP-MNT-A AP mount bracket individual A: suspended ceilin...	Hewlett Packard Enter...	\$30.00
Quote Total				

*

200 VOIP phones

QUESTION 6

What is one reason to deploy an Aruba CX switch when compared to an ArubaOS switch?

- A. to obtain API-enabled programmability for greater automation
- B. to support Aruba Dynamic Segmentation
- C. to obtain higher wattage power modules for enhanced PoE+ support
- D. to support Zero Touch provisioning (ZTP)

Correct Answer: C

QUESTION 7

A customer needs an AP for an indoor lecture hall that is about 82 feet (25 m) by 32 feet (10 m) and has 300 seats. The ceiling height is 15 feet. The expected take rate is 100 percent.

The network needs to support the student laptops, which all support 802.11ac and some support 802.11ax standard.

The customer would like to obtain as many usable cells as possible with as few APs as possible.

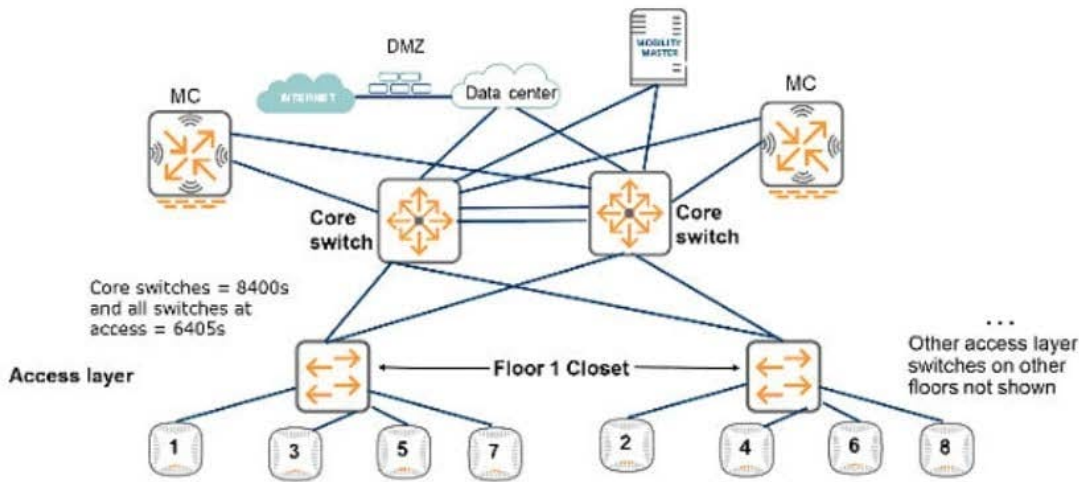
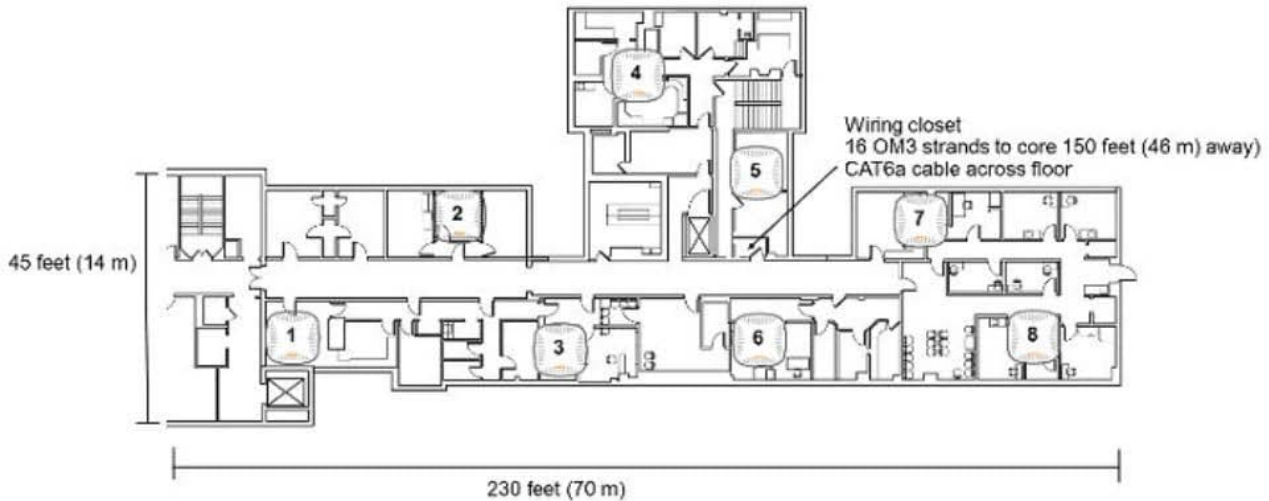
Which of these APs meets the requirements?

- A. AP-335
- B. AP-S15
- C. AP-345
- D. AP-535

Correct Answer: D

QUESTION 8

Refer to the exhibit.



A customer needs to support resilient wireless services

What is one way that this design helps to minimize the impact of a failed access layer switch on these services?

- A. The switches support Smart Rate and dual home AP connections.
- B. The 8400s and 6405s use Virtual Switching Extension (VSX) in core and access.
- C. Each access layer switch has two redundant links to the core.
- D. APs in the same area connect to different switches.

Correct Answer: A

QUESTION 9

A customer has an Aruba wireless network with:

*

Two 7205 Mobility Controllers (MCs) in a cluster - Each MC must be able to support the complete network in the case of an MC failure

*

250 APs. which support a total of 7.500 devices

*

A virtual CxQCQ ClearPass appliance with 1QK Access licenses

*

An MM-HW-1K appliance

The customer is interested in an upgrade to Aruba CX Switches, primarily to benefit from the per-user tunneled node feature. The customer requires support for 2500 ports, and 95 percent of wired endpoints will use tunneled node.

Which change to the existing solution should the architect explain?

A.

A separate ClearPass virtual appliance will be required to integrate with the AQS- Switches

B.

The clustering feature will need to be disabled on the controllers, so that they can support tunneled node.

C.

A new controller will be required to support sufficient clients, including the wired ones.

D.

The Mobility Master will need more MM licenses to support the wired endpoints that use tunneled node.

Correct Answer: B

QUESTION 10

What is one customer requirement that can drive the need for a relatively dense AP deployment. In which coverage areas of at least three AP radios overlap?

A. AP operation as hybrid AMs for IDS/WIPS

B. the deployment of dual 5GHz radio APs

C. support for beacon management

D. location tracking of wireless IoT devices

Correct Answer: C

[Latest HPE6-A80 Dumps](#)

[HPE6-A80 Practice Test](#)

[HPE6-A80 Study Guide](#)