

# INTEGRATION-ARCHITECTURE- DESIGNER<sup>Q&As</sup>

Salesforce Certified Integration Architecture Designer

**Pass Salesforce INTEGRATION-ARCHITECTURE-  
DESIGNER Exam with 100% Guarantee**

Free Download Real Questions & Answers **PDF** and **VCE** file from:

<https://www.pass2lead.com/integration-architecture-designer.html>

100% Passing Guarantee  
100% Money Back Assurance

Following Questions and Answers are all new published by Salesforce  
Official Exam Center

- ⚙️ **Instant Download** After Purchase
- ⚙️ **100% Money Back** Guarantee
- ⚙️ **365 Days** Free Update
- ⚙️ **800,000+** Satisfied Customers



**QUESTION 1**

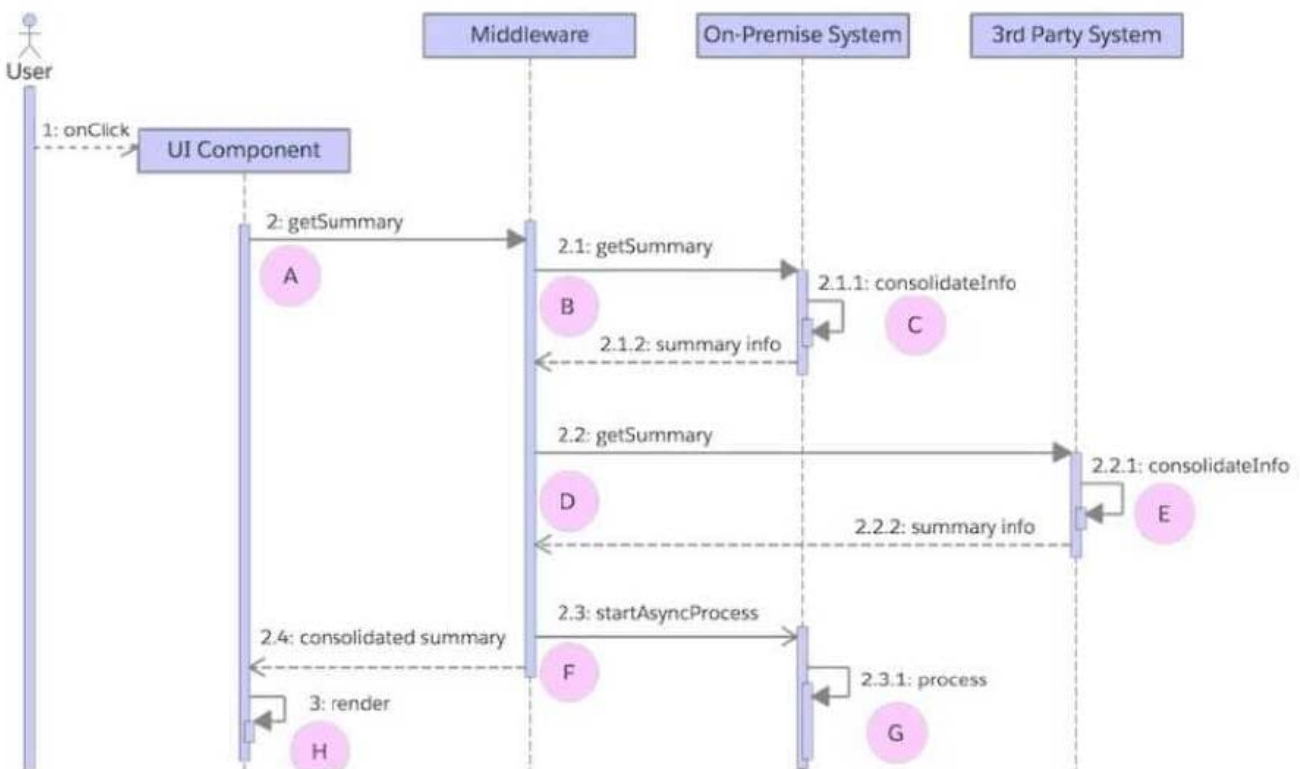
Universal Containers has decided that acquisition of other companies will be a key focus of their growth for the next several years. All acquired customer service agents will use UC's pre-existing customer support process built in Salesforce. The ERP application at any acquired company will not be immediately replaced, and customer service agents must be able to see up-to-date order status from all ERP systems. What recommendation should a technical Architect make to minimize complexity during new acquisitions?

- A. Use custom Linksto direct users to the appropriate ERP system to view order status.
- B. Build all Integrations as nightly ETL batches to minimize real-time overhead.
- C. Leverage Apex callouts to integrate directly with acquired applications.
- D. Use an ESB to abstract the Salesforce integration from other enterprise applications.

Correct Answer: B

**QUESTION 2**

A company's cloud-based single page application consolidates data local to the application with data from on premise and 3rd party systems. The diagram below typifies the application's combined use of synchronous and asynchronous calls.



The company wants to use the average response time of its application's user interface as a basis for certain alerts. For this purpose, the following occurs:

1.

Log every call's start and finish date and time to a central analytics data store.

2.

Compute response time uniformly as the difference between the start and finish date and time -- A to H in the diagram.

Which computation represents the end-to-end response time from the user's perspective?

- A. Sum of A to H
- B. Sum of A to F
- C. Sum of A, G, and H
- D. Sum of A and H

Correct Answer: D

---

### QUESTION 3

Universal Containers has a batch integration that runs every five minutes to load Shipment records related to existing orders that have been updated in the previous five minutes. The integration is not reporting any errors, but some Shipment records are not being loaded.

What could be the problem?

- A. Error reporting is not enabled in Salesforce.
- B. The integration takes more than five minutes to run.
- C. The integration is causing UC to exceed its API limits.
- D. The Integration cannot find the parent orders for some Shipments.

Correct Answer: B

---

### QUESTION 4

Universal Containers has multiple Salesforce orgs as a result of a number of acquisitions over time. They decide to let the subsidiaries continue using their own orgs but would like to streamline their lead processing. They identified one org that would act as a gateway to receive all the leads for the group and then distribute them to subsidiary orgs based on lead type. Changes to lead status in subsidiary orgs must be reflected in the gateway org. They decide to use Salesforce-to-Salesforce for lead distribution.

What limitation of Salesforce-to-Salesforce must be considered to ensure seamless two-way integration?

- A. Salesforce-to-Salesforce has no built-in support for bi-directional (two-way) integrations.
- B. Salesforce-to-Salesforce has a limit on the number of records shared between systems.

- C. salesforce-to-Salesforce does not support linking/sharing with existing records in a receiving org.
- D. salesforce-to-Salesforce has no built-in support for objects with Parent-child relationships.

Correct Answer: D

---

#### QUESTION 5

Universal Containers has a SOAP-based integration that runs nightly to update the Product(Product2) object in Salesforce with updated product availability for over 500,000 products. The source system is a green-screen ERP that must be taken offline to produce nightly production reports, such as the inventory availability report used for this integration. The integration is performing very slowly and does not complete within the allocated four-hour time slot.

What three recommendations might a Technical Architect make to resolve this issue?

Choose 3 answers

- A. Use outbound Messaging to notify Salesforce promptly when product availability changes in the source system.
- B. Store the Salesforce Product ID in the source system to eliminate the need for External IDs and UPSERT API calls.
- C. Pre-process the data to avoid the need for workflow rules or triggers
- D. Use the Bulk API UPDATE or UPSERT records more efficiently.
- E. Contact Salesforce support to request that they turn off record locking on the Product2 object.

Correct Answer: BCD

---

#### QUESTION 6

The director of customer service at Northern Trail Outfitters (NTO) wants to capture and trend specific business events that occur in Salesforce in real time. The metrics will be accessed in an ad-hoc manner using an external analytics system. The events that are of interest are: A customer has initiated a product exchange via a Case A customer service rep clicks on the "Authorize Exchange Product" menu item on the Case A customer has initiated a subscription cancellation via a Case A customer service rep clicks on the "Initiate Refund" menu item on the Case. Which two solutions will meet these business requirements? Choose 2 answers

- A. Case after insert Trigger that executes a callout.
- B. Case Workflow Rule that sends an Outbound Message.
- C. Case after insert Trigger that publishes a Platform Event.
- D. Custom Apex controller that publishes a Platform Event.

Correct Answer: CD

---

#### QUESTION 7

Which two options should be considered to permit automatic retry of failed updates when loading data into Salesforce?

Choose 2 answers

- A. Bulk API with serial option.
- B. Standard API with parallel option.
- C. Bulk API with parallel option.
- D. Standard API with serial option.

Correct Answer: AC

---

#### QUESTION 8

When making an Apex callout, what approach should an Integration Architect recommend for securely transporting sensitive data from Salesforce over an unsecure network connection?

- A. Base64 encode the data before performing the call out from Apex.
- B. Encrypt the data with a shared key before performing the Apex callout.
- C. Use platform Encryption to secure the data before transporting.
- D. Salesforce automatically secures all data transmissions to external systems.

Correct Answer: A

---

#### QUESTION 9

Northern Trail Outfitters (NTO) uses Salesforce to track leads, opportunities and order details that convert leads to customers. However, Orders are managed by an external (remote) system. Sales representatives want to view and update real-time order information in Salesforce. NTO wants the data to only persist in the external system.

Which type of Integration should an architect recommend to meet this business requirement?

- A. Data Visualization
- B. Data Synchronization
- C. Process Orchestration
- D. Batch Processing

Correct Answer: A

---

#### QUESTION 10

Universal Containers (UC) owns a variety of cloud-based applications, including Salesforce, alongside several on-premise applications. The on-premise applications are protected behind a corporate network with limited outside access to external systems. UC would like to expose data from the on-premise applications to Salesforce for a more unified user experience. The data should be accessible from Salesforce in real-time.

Which two actions should be recommended to fulfill this system requirement? Choose 2 answers

- A. Develop an application in Heroku that connects to the on-premise database via an ODBC string and VPC connection.
- B. Develop custom APIs on the company's network that are invocable by Salesforce.
- C. Deploy MuleSoft to the on-premise network and design externally facing APIs to expose the data.
- D. Run a batch job with an ETL tool from an on-premise server to move data to Salesforce.

Correct Answer:

---

#### QUESTION 11

Universal Containers would like to ensure that the server and client-side app's identity is mutually authenticated for all integrations.

Which two of the integration patterns below support such authentication?

- A. Apex callout to the client-side app with the callout payload encrypted with custom Apex code.
- B. Outbound message received by client-side app that uses a Salesforce-provided client certificate.
- C. Apex callout with the client-side app that provides Salesforce with a CA-signed client certificate.
- D. Outbound message sent to a client-side app endpoint defined with a Per-User Named Credential.

Correct Answer: BC

---

#### QUESTION 12

An Integration Architect has built a Salesforce application that integrates multiple systems and keeps them synchronized via Platform Events.

What is taking place if events are only being published?

- A. The platform events are published immediately before the Apex transaction completes.
- B. The platform events are published after the Apex transaction completes.
- C. The platform events has a trigger in Apex.
- D. The platform events are being published from Apex.

Correct Answer: B

---

### QUESTION 13

What should an integration Architect consider when building a visulaforce page that makes client-side callouts to multiple domains that may violate the browser's same-origin policy?

Choose 2 answers A. Setup CORS to whitelist all domains that the client scripts communicate with.

B. utilize the canvas SDK to perform the callouts.

C. Ensure each javascript resource communicates only with its origin.

D. Set up Remote site settings for all domains that the client scripts communicate with.

Correct Answer: AD

---

### QUESTION 14

Universal Containers (UC) is currently managing a custom monolithic web service that runs on an on-premise server.

This monolithic web service is responsible for Point-to-Point (P2P) integrations between:

1.

Salesforce and a legacy billing application

2.

Salesforce and a cloud-based Enterprise Resource Planning application

3.

Salesforce and a data lake.

UC has found that the tight interdependencies between systems is causing integrations to fail.

What should an architect recommend to decouple the systems and improve performance of the integrations?

A. Re-write and optimize the current web service to be more efficient.

B. Leverage modular design by breaking up the web service into smaller pieces for a microservice architecture.

C. Use the Salesforce Bulk API when integrating back into Salesforce.

D. Move the custom monolithic web service from on-premise to a cloud provider.

Correct Answer: B

---

### QUESTION 15



A large consumer goods manufacturer operating in multiple countries is planning to implement Salesforce for their Sales and Support operations globally. They have the following security requirements:

1.

Internal users from each country have to be authenticated with their local active directory.

2.

Customers can create their own login or use Google login.

3.

Partners have to be authenticated through a central system which is to be determined.

4.

Internal users will have access to the central ERP with their credentials maintained in the ERP.

5.

Additional internal systems will be integrated with Salesforce for Sales and Support business processes.

Which three requirements should the integration architect evaluate while designing the integration needs of this project?  
Choose 3 answers

A. Evaluate Salesforce solution for customers and for partners, using third party solution for internal users.

B. Assess security requirements for internal systems and decide Integration methods that support the requirements.

C. Evaluate the build of a custom authentication mechanism for users in each country and support for customers and partners.

D. Consider Third party Single Sign On solution supporting all user authentication including customer and partner.

E. Evaluate Salesforce native authentication mechanism for all users including customers and partners.

Correct Answer: BCE

[INTEGRATION-ARCHITECTURE-DESIGNER PDF Dumps](#)

[INTEGRATION-ARCHITECTURE-DESIGNER VCE Dumps](#)

[INTEGRATION-ARCHITECTURE-DESIGNER Study Guide](#)