

# JN0-682<sup>Q&As</sup>

Data Center Professional (JNCIP-DC)

## Pass Juniper JN0-682 Exam with 100% Guarantee

Free Download Real Questions & Answers **PDF** and **VCE** file from:

<https://www.pass2lead.com/jn0-682.html>

100% Passing Guarantee  
100% Money Back Assurance

Following Questions and Answers are all new published by Juniper  
Official Exam Center

-  **Instant Download** After Purchase
-  **100% Money Back** Guarantee
-  **365 Days** Free Update
-  **800,000+** Satisfied Customers



### QUESTION 1

Which two statements about the seamless EVPN-VXLAN stitching interconnect gateways are correct? (Choose two.)

- A. IBGP is recommended for VXLAN stitching overlays.
- B. Interconnect gateways will rewrite the route target, route distinguisher, and ESI values for each stretched virtual network.
- C. All EVPN routes types are forwarded among interconnect gateways in a full-mesh manner.
- D. The interconnect gateway can reside on the super spine layer of a multi-POD data center.

Correct Answer: CD

---

### QUESTION 2

What are two methods used to scale an IBGP IP Fabric? (Choose two.)

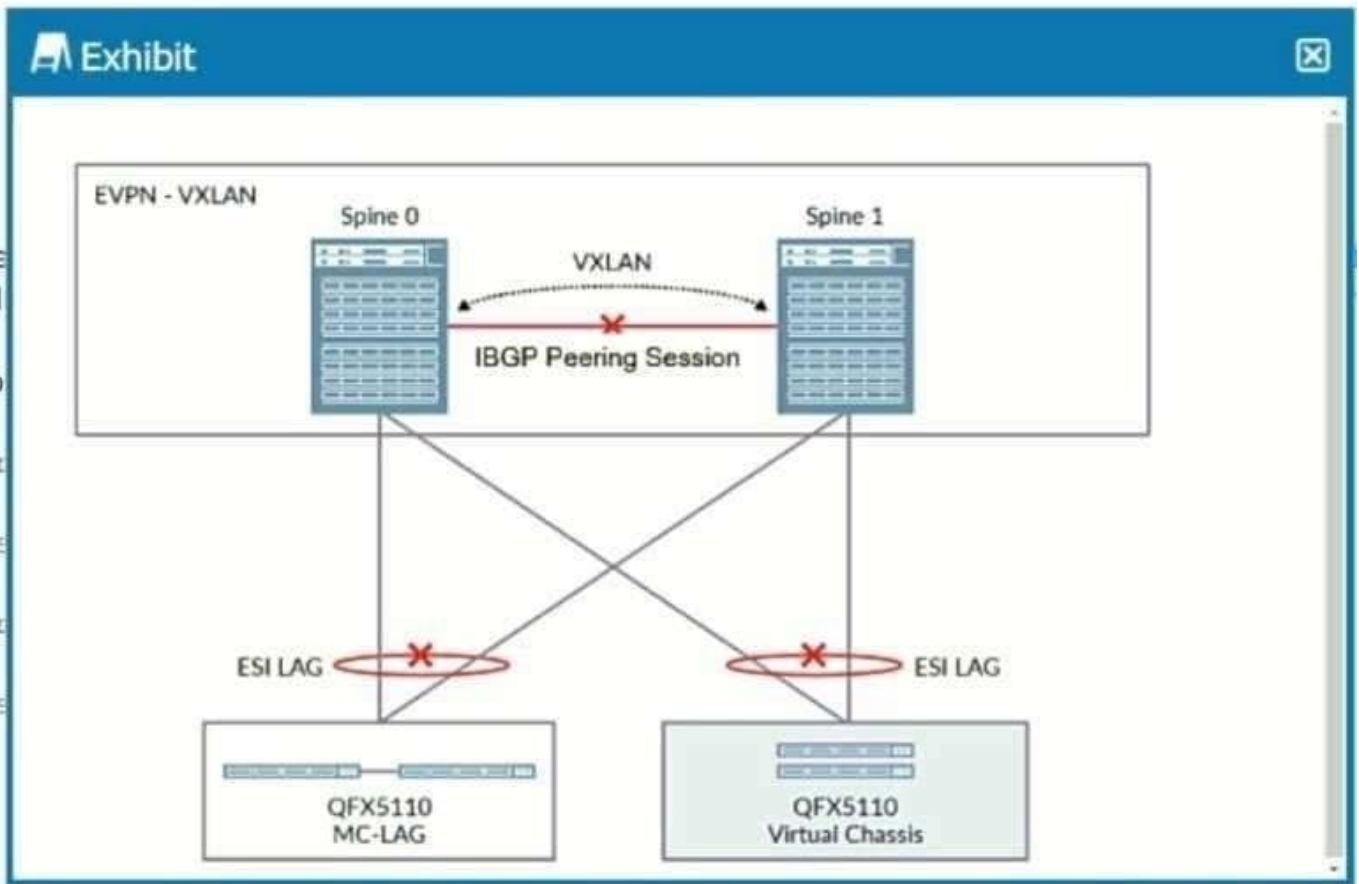
- A. Spanning tree
- B. Redundant trunk groups
- C. Route reflection
- D. Confederations

Correct Answer: CD

---

### QUESTION 3

Referring to the exhibit, you have a data center in which only the spine devices are using EVPN and VXLAN. The leaf nodes are multihomed in active-active mode to the spine nodes through ESI LAG interfaces. In this design, a link failure on the interface connecting the spine nodes would also cause all traffic from the spine to the leaf nodes to drop.



In this scenario, which command configured on which nodes would solve this problem?

- A. the disable protocols evpn no-core-isolation command on the spine nodes
- B. the set protocols evpn no-core-isolation command on the spine nodes
- C. the disable protocols evpn no-core-isolation command on the leaf nodes
- D. the set protocols evpn no-core-isolation command on the leaf nodes

Correct Answer: A

#### QUESTION 4

Which two statements are correct about VXLANs? (Choose two.)

- A. VXLANs have smaller broadcast domains than VLANs.
- B. VXLANs have a smaller logical network identifier than VLANs.
- C. VXLANs can have a theoretical maximum of 16 million unique networks.
- D. VXLANs are an overlay technology.

Correct Answer: CD

#### QUESTION 5

You are asked to deploy an Ethernet bridging design in a data center with the criteria shown below.

- Routing must occur on the spine devices.
- VTEPs must terminate on the leaf devices.
- Facilitate inter-VLAN communication.
- Layer 2 gateways must be present on spine and leaf devices.

Which architecture should you use in this scenario?

- A. edge-routed bridging architecture
- B. centrally-routed bridging architecture
- C. bridge overlay architecture
- D. collapsed spine architecture

Correct Answer: B

---

#### QUESTION 6

What is an advantage that EVPN has over VPLS when used for DCI?

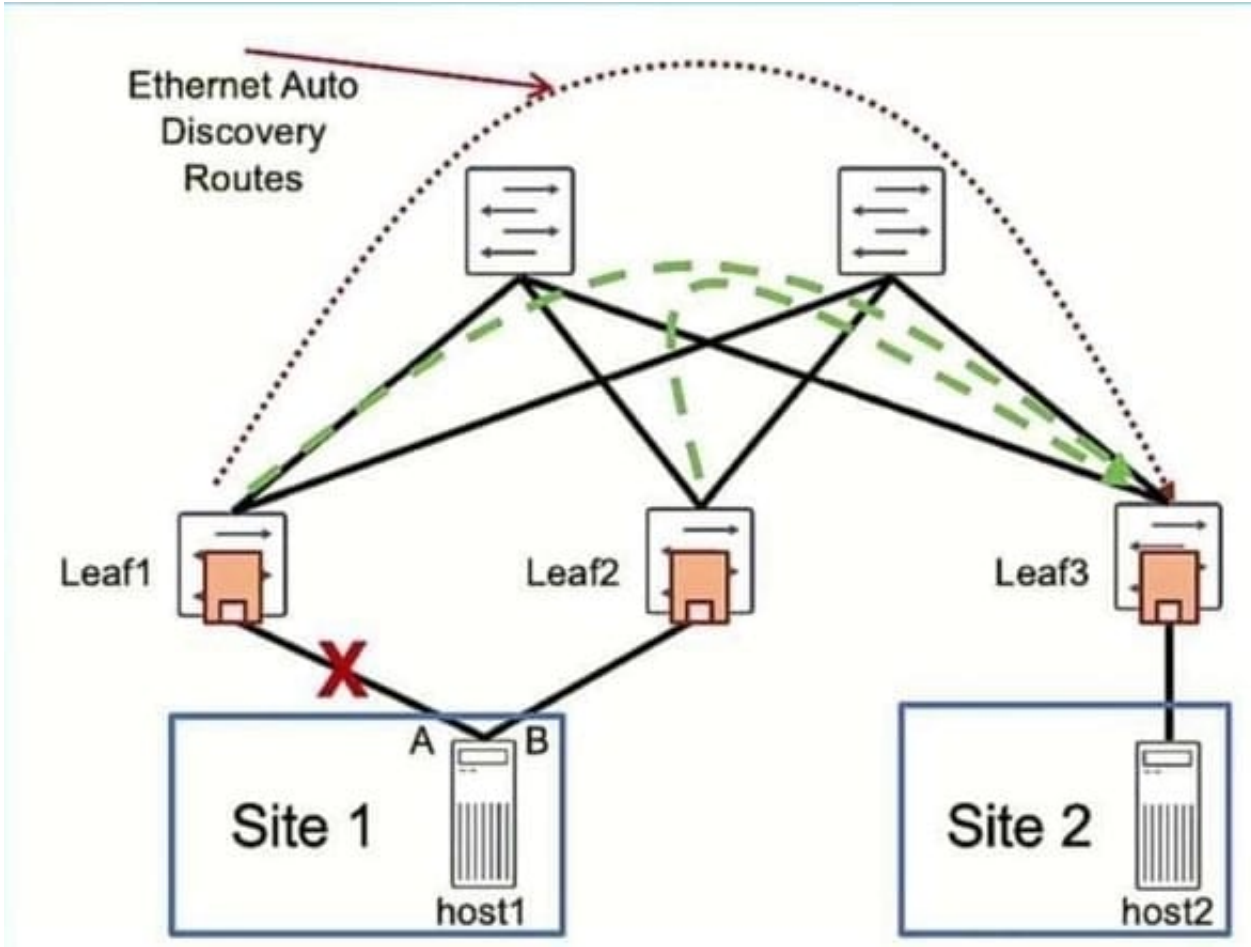
- A. mass MAC withdrawal
- B. transparent BPDU transport
- C. active/standby multihoming
- D. reverse path forwarding

Correct Answer: A

---

#### QUESTION 7

Site 1 contains 20+ VMs. The link between Site 1 and Leaf1 goes down. Referring to the exhibit, which statement is correct?



- A. Type-1 routes for each VM will expire one at a time.
- B. Type-1 routes for all VMs in the site will expire all at once.
- C. Type-1 routes for all VMs in the site will be withdrawn all at once.
- D. Type-1 routes for each VM will be withdrawn one at a time.

Correct Answer: C

**QUESTION 8**

The configuration shown in the exhibit is intended to set up assisted replication but will not commit. Which action will create a valid configuration in this situation?



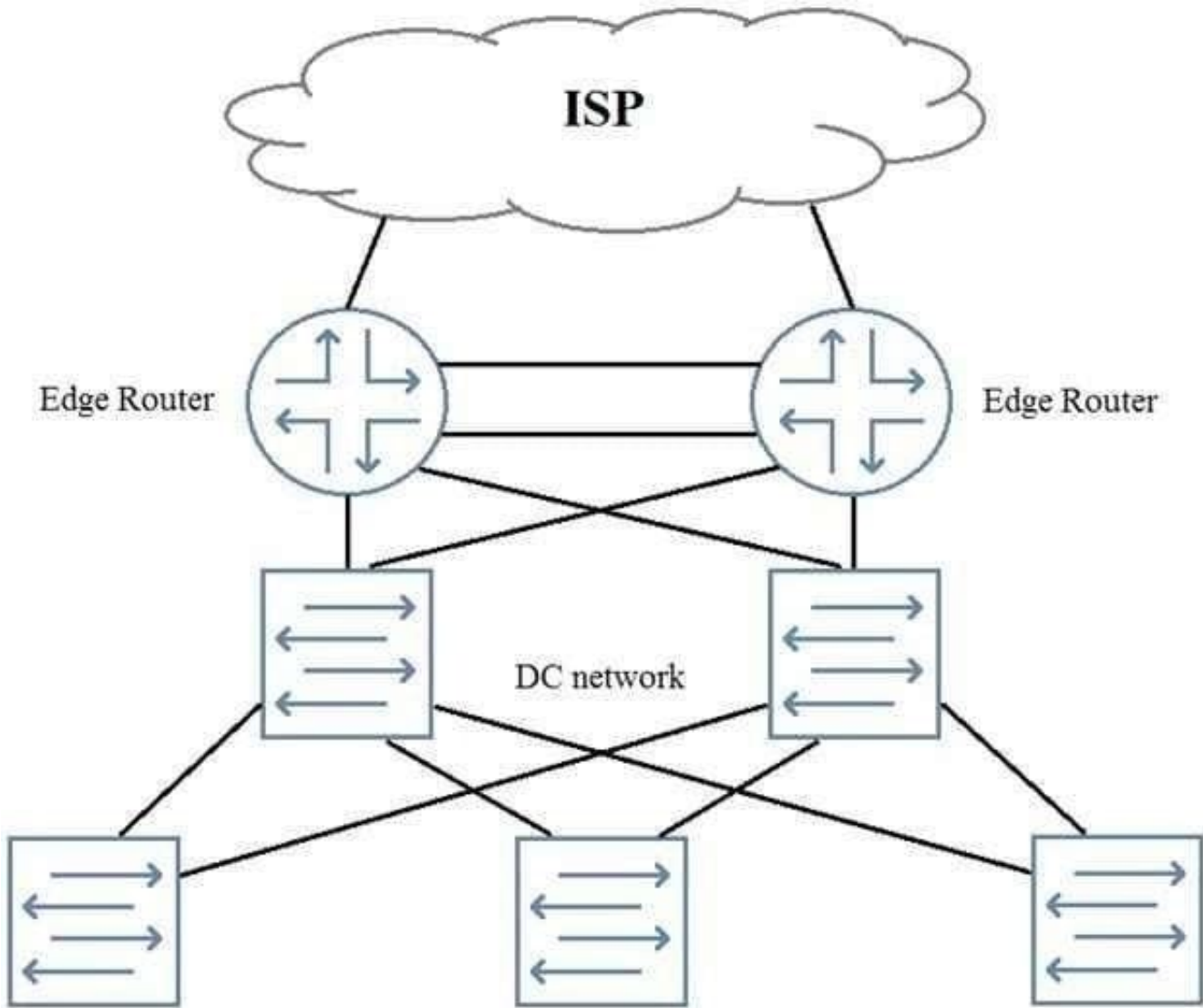
```
192.168.100.1;
    vxlan-encapsulation-source-ip ingress-replication-ip;
}
extended-vni-list all;
}
(master:0)(edit)
user@spine1# show interfaces lo0
unit 0 {
    family inet {
        address 192.168.100.1/32;
        address 192.168.100.51/32;
    }
}
unit 1 {
    family inet {
        address 192.168.100.101/32;
    }
}
```

- A. Change the 10.0 address to 192.168.100.1 primary.
- B. Change the replicator inet address to 192.168.100.101.
- C. Delete replicator inet 192.168.100.1.
- D. Change the replicator inet address to 192.168.100. 51.

Correct Answer: B

**QUESTION 9**

You need to add perimeter security to the network shown in the exhibit. All traffic must be inspected for attacks. The edge routers are using all available ports. Your solution must maintain both port and device resiliency.



In this scenario, which design would satisfy these requirements?

- A. one-arm SRX Series chassis cluster
- B. one-arm SRX Series device using LAG
- C. inline SRX Series chassis cluster
- D. inline SRX Series device using LAG

Correct Answer: C

**QUESTION 10**

You manage a data center with a 5-stage EVPN-VXLAN IP fabric. You notice that there are suboptimal paths used between the leaf and spine as well as the spine and super spine. What is one way to solve this issue?

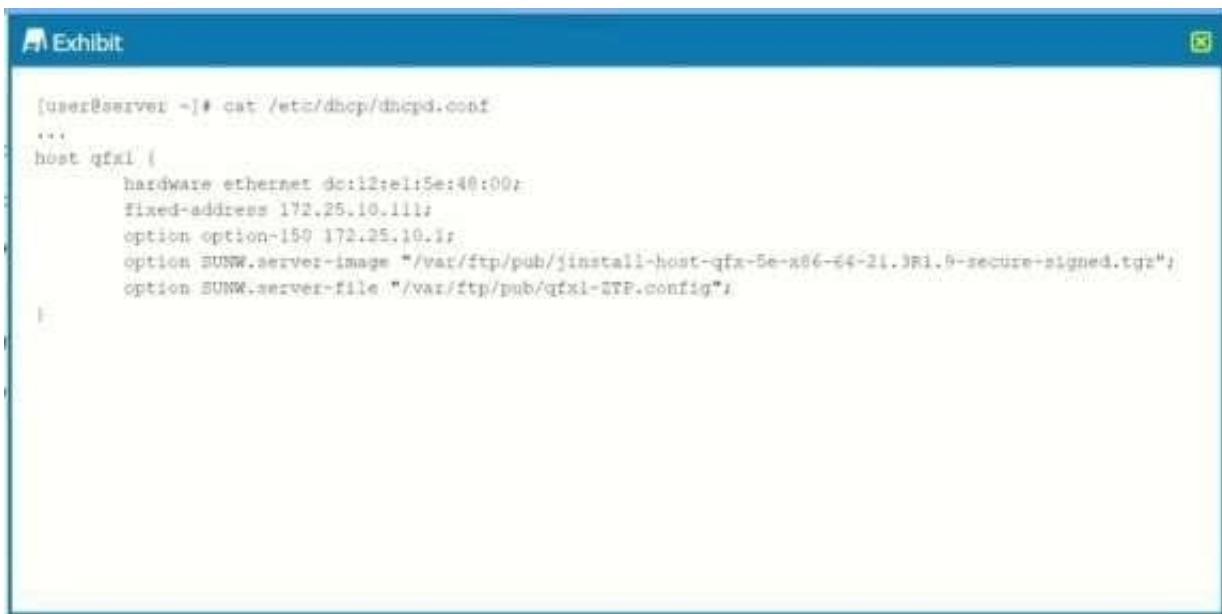
- A. Configure the super spine and spine layers to all use the same ASN.

- B. Configure the spine layer for EBGP and the leaf layer for IBGP
- C. Configure the spine layer so that all spines in a POD share the same ASN.
- D. Configure the leaf layer so that all leaf devices share the same ASN.

Correct Answer: B

### QUESTION 11

Referring to the exhibit,



```
[user@server ~]# cat /etc/dhcp/dhcpd.conf
...
host qfx1 {
    hardware ethernet dc:12:e1:5e:48:00;
    Fixed-address 172.25.10.111;
    option option-150 172.25.10.1;
    option SUNW.server-image "/var/ftp/pub/install-host-qfx-5e-x86-64-21.3R1.0-secure-signed.tgz";
    option SUNW.server-file "/var/ftp/pub/qfx1-ZTP.config";
}
```

what happens when you initiate ZTP on a QFX5120 switch running Junos 21.3R1.9?

- A. ZTP skips both the Junos installation and the configuration.
- B. ZTP performs the Junos installation but skips the configuration.
- C. ZTP performs both the Junos installation and the configuration.
- D. ZTP skips the Junos installation but applies the configuration.

Correct Answer: C

### QUESTION 12

Which EVPN route type would be used in DCI situation in which the IP subnets between data center are complete unique?



- A. Type 4
- B. Type 3
- C. Type 2
- D. Type 5

Correct Answer: D

---

**QUESTION 13**

You are an architect for an enterprise organization that currently operates three data centers with plans to expand to five data centers in the next year. You already notice large amounts of BUM flooding and must control this issue before implementing the next two data centers.

Which feature would address this issue?

- A. type-5 routes
- B. type-6 routes
- C. mesh groups
- D. VXLAN BUM traffic filter

Correct Answer: B

---

**QUESTION 14**

You are designing a network for a small data center. In this scenario, which underlay protocol allows for the simplest implementation?

- A. EBGp
- B. OSPF
- C. IGMP
- D. MPLS

Correct Answer: B

---

**QUESTION 15**

Which EVPN router type prevents BUM traffic from looping back to a multihomed host?

- A. Ethernet segment router

- B. IP prefix route
- C. Ether auto discovery route
- D. Inclusive multicast-Ethernet tag route

Correct Answer: C

[JN0-682 PDF Dumps](#)

[JN0-682 VCE Dumps](#)

[JN0-682 Braindumps](#)