

# JPR-961<sup>Q&As</sup>

Juniper Networks Certified Internet Expert (JNCIE-SP)

## Pass Juniper JPR-961 Exam with 100% Guarantee

Free Download Real Questions & Answers **PDF** and **VCE** file from:

<https://www.pass2lead.com/jpr-961.html>

100% Passing Guarantee  
100% Money Back Assurance

Following Questions and Answers are all new published by Juniper  
Official Exam Center

- ⚙️ **Instant Download** After Purchase
- ⚙️ **100% Money Back** Guarantee
- ⚙️ **365 Days** Free Update
- ⚙️ **800,000+** Satisfied Customers



### QUESTION 1

You need to create several subnets for your corporate network. Each subnet should have no more than two host addresses available per subnet. You have a subnet with the address of 136.42.255.0/24. What are the first two subnet addresses that would be created in this configuration?

- A. 136.42.255.0/31, 136.42.255.4/31
- B. 136.42.255.2/30, 136.42.255.4/30
- C. 136.42.255.4/29, 136.42.255.8/29
- D. 136.42.255.0/30, 136.42.255.4/30

Correct Answer: D

---

### QUESTION 2

Katherine has been asked for her opinion on increasing the fault tolerance of the corporate network, which uses TCP/IP, Active Directory, and Windows 2000 computers. Specifically, the one DNS server on subnet A. Users may run into serious problems if that machine ever experiences downtime, or if the link between the two subnets goes down. Each subnet has its own Windows domain controller. What would you suggest to provide fault tolerance for the network?

- A. Set up a secondary DNS server on subnet B. Configure the primary DNS server on subnet A to send notifications of zone changes to the secondary DNS server.
- B. Configure DNS on both domain controllers using Active Directory Integrated zones.
- C. Install a caching-only DNS server on subnet B.
- D. Set up a secondary DNS server on subnet B and configure it to request refreshes from the master DNS server on subnet A.

Correct Answer: B

---

### QUESTION 3

You are a network administrator for your company. The company network consists of two Active Directory forests. Verigon.com is the single-domain forest that contains all user accounts and resources for the corporate network, except the

resources that are allocated to the Development department. Dev.corp is the single-domain forest that is used only by the Development department. You configure an external trust between the two domains.

Developers must be able to log on from their computers to the verigon.com domain. In the verigon.com forest, you create a new user principal name (UPN) suffix of dev.corp and configure UPNs for the developers\' user accounts in the

verigon.com domain with this suffix. Developers report that they cannot log on to the verigon.com domain from their computers, which belong to the dev.corp domain, by using their UPNs. You must enable developers to log on to the

verigon.com domain from their computers by using UPNs.

What should you do?

- A. Replace the external trust with a forest trust.
- B. Change the UPN suffix for the developers\ user accounts to verigon.com.
- C. Configure selective authentication on the trust.
- D. Configure domain-wide authentication on the trust.

Correct Answer: A

---

#### QUESTION 4

The ABC.com network consists of a single Active Directory domain named ABC.com. ABC.com has its headquarters in Chicago and several branch offices at various locations throughout the country. All servers on the ABC.com network run

Windows Server.

You are in the process of configuring a VPN connection between the Chicago office and a branch office in Dallas using Windows Server computers running Routing and Remote Access (RRAS).

A ABC.com written security policy states that the requirements below must be met:

Data transmitted over the VPN must be encrypted with end to end encryption.

The VPN connection authentication should be at the computer level rather than at user level and with no credential information transmitted over the internet.

How should you configure the VPN? (Choose two.)

- A. Use a PPTP connection.
- B. Use EAP-TLS authentication.
- C. Use a PPP connection.
- D. Use MS-CHAP v2 authentication.
- E. Use MS-CHAP authentication.
- F. Use PAP authentication.
- G. Use an L2TP/IPSec connection.

Correct Answer: BG

---

#### QUESTION 5

The ABC.com network consists of a single Active Directory domain named ABC.com. All servers on the ABC.com

network run Windows Server and all client computers run Windows XP Professional.

ABC.com contains a file server named ABC-SR24. ABC-SR24 hosts the home folders for all ABC.com users.

After about a month the ABC.com users raised complaints regarding the unacceptable long time their home folder takes to open at certain times during the day.

You need to determine the reason for the poor performance. You verify that the processor and memory usage is low. You suspect the hard disk may be the cause of the bottleneck.

How would you verify that the hard disk is the problem?

- A. Use System Monitor to view the LogicalDisk and PhysicalDisk counters during a period of poor performance.
- B. Use Task Manager to view the page faults counter.
- C. Configure Auditing on the home folders.
- D. Use Network Monitor to view the amount of network traffic to and from the server.

Correct Answer: A

---

#### QUESTION 6

Mark works as a Network Administrator for ABC.com. The company has a Windows domainbased network. The network contains two domain controllers, four Windows member servers, and 300 Windows XP Professional client computers. One of the member servers named RRASSRV works as a Routing and Remote Access Server. RRAS is configured as a VPN server. A company employee named Rick works from a remote location. Rick daily connects to RRASSRV by using a VPN connection and uploads daily reports on RRASSRV. He is the only person who connects to RRASSRV by using the VPN connection. Mark notices that Rick is able to access the other computers on the network while he is connected to RRASSRV. Mark wants to prevent Rick from accessing the other computers on the network. What will he do to accomplish this?

- A. In the Routing and Remote Access management console on RRASSRV, click the IP tab page in the server properties dialog box and deselect the Enable IP routing check box.
- B. In the Routing and Remote Access management console on RRASSRV, click the General tab page in the server properties dialog box and deselect the Remote access server check box.
- C. In the Routing and Remote Access management console on RRASSRV, click the PPP tab page in the server properties dialog box and deselect the Multilink connections check box.
- D. In the Routing and Remote Access management console on RRASSRV, click the IP tab page in the server properties dialog box and disable the IP routing radio button.

Correct Answer: A

---

#### QUESTION 7

The ABC.com network consists of a single Active Directory domain named ABC.com. All client computers on the ABC.com network run Windows XP Professional.

You use your client computer named ABC-WS294. You want to use Microsoft Baseline Security Analyzer (MBSA) on

ABC-WS294 to analyze network servers for security vulnerabilities.

Which of the following services are the minimum required to be running on the network servers for you to scan them with MBSA? (Choose all that apply.)

- A. Remote Registry.
- B. Workstation service.
- C. Server service.
- D. Print Spooler service.

Correct Answer: AC

---

#### QUESTION 8

A beta version of an application you're testing to send and receive data on your network does not seem to be sending compressed data before sending packets across the network. You're looking at the architecture of the application to see if you can determine where the problem likely originates. Using the OSI model, from where is the problem probably originating?

- A. Transport layer
- B. Application layer
- C. Presentation layer
- D. Physical layer

Correct Answer: C

---

#### QUESTION 9

Jim is configuring the IP security policy for a computer running Windows Server.

Some of the client computers on the network are not IPSec aware, while others are. Jim wants all data to be encrypted and still allow those computers that do not support IPSec to authenticate.

Which of the following settings should he select? (Choose all that apply.)

- A. Server (request security)
- B. Client (request security)
- C. Client (respond only)
- D. Server Secure (require security)

Correct Answer: AC

---

#### QUESTION 10

You are the security administrator for your company. The company's network supports 500 users. All network server computers run Windows Server. All network client computers run Windows XP Professional. All domain account logon events are audited.

A human resources manager requests that you produce a listing of the times and dates a user named JohnP logged on to the domain. The user was assigned to a client computer named HR09.

You should achieve this objective while reviewing the minimum amount of information. What should you do? (Choose two. Each correct answer presents part of the solution.)

- A. Create a filter that will list all events for the JohnP user account.
- B. Use the Find option to list only the events for the JohnP user account.
- C. Open Event Viewer and access the security log on each domain controller.
- D. Use the Find option to list only the events for the HR09 computer account.
- E. Create a filter that will list only the events for the HR09 computer account.
- F. Log onto HR09 as a local administrator, and open Event Viewer to view the local security log.

Correct Answer: AC

---

#### QUESTION 11

The ABC.com network consists of a single Active Directory domain named ABC.com. All servers on the ABC.com network run Windows Server.

ABC.com contains a Development department. ABC.com contains a domain controller named ABC-SR24 which is also configured as a DNS Server. A ABC.com employee named Clive Wilson works in the Development department. One morning Clive Wilson complains that he cannot connect to another network server.

During investigation, you notice that nslookup queries sometimes take a long time and sometimes fail altogether.

You suspect that there is a problem with ABC-SR24.

How would you configure monitoring on ABC-SR24 so that you can review individual name resolution queries?

- A. Use System Monitor to monitor host resolution queries on ABC-SR24.
- B. Use Event Viewer to view the DNS event log on ABC-SR24.
- C. Select the Log packets for debugging option on the Debug Logging tab in the DNS server properties on ABC-SR24.
- D. Use Network Monitor to capture DNS query packets on ABC-SR24.

Correct Answer: C

---

### QUESTION 12

Mark works as a Network Administrator for ABC.com. The company has its headquarters at New York and a branch office at Miami. The headquarters has a Windows domain-based network named Nettech.com. The network has three

Windows member servers and 120 Windows XP Professional client computers. One of the member servers named DNSServ is working as a DNS server.

The branch office in Miami also has a Windows domain-based network named Nettech1.com.

One Windows member server named DNSServ1 is working as a primary DNS server in Nettech1.com. DNSServ is a secondary zone server for Nettech1.com. Mark wants to monitor the notification traffic between these two domains and

keep a record of when the primary DNS server for Nettech1.com informs DNSServ if there are available changes in the Nettech1.com zone. What will he do to accomplish this?

- A. Enable debug logging on DNSServ by selecting the Log packets for debugging check box and select the Notification check box.
- B. Configure auditing on DNSServ.
- C. Enable debug logging on DNSServ by selecting the Log packets for debugging check box.
- D. Execute the REPLMON command on DNSServ.

Correct Answer: A

---

### QUESTION 13

Ceste has been working for the client services department at a local bank in Richmond, Virginia for over a year. He is responsible for client connectivity to the corporate network backbone. Ceste is a member of the DHCP Users group and uses his privileges as a member of this group to gauge the status of DHCP leases and available IP addresses. Jamie is a systems engineer for the same bank, and is responsible for the back-end configuration of all DHCP servers and scope configuration. He is a member of both the Domain Users and DHCP Administrators groups. On Monday morning, SERVER2, the DHCP server servicing the first and second floor of the bank, crashes. SERVER2 sits on the same network segment as the first floor users

Correct Answer: A

---

### QUESTION 14

Your corporate network uses variable length subnetting to make more efficient use of IP addresses. One of the IP addresses for a host is 131.39.161.17 with a subnet mask of 255.255.248.0. What is the proper notation for the network to which this host is connected?

- A. 131.39.160.0/21
- B. 131.36.161.0/20
- C. 131.39.161.17/21
- D. 131.36.160.0/20

Correct Answer: A

**QUESTION 15**

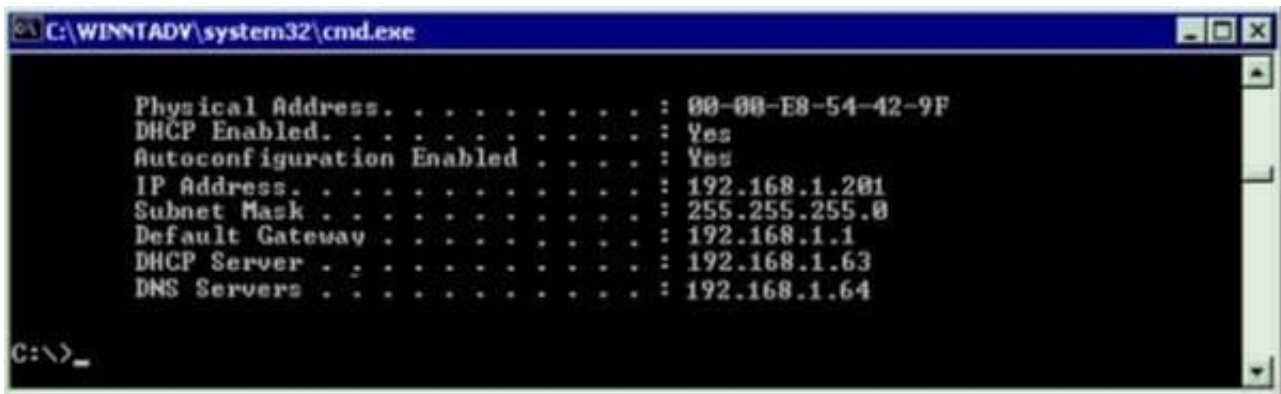
Mark works as a Network Administrator for ABC.com. The company has a Windows Active Directorybased single domain single forest network. The network contains five member servers and 110 Windows XP Professional client computers.

The client computers in the network receive IP addresses from the DHCP server.

One of the member servers named DBSERV works as a database server. Mark configures the DHCP server to lease the reserved IP address 192.168.1.10 to DBSERV. He also creates an A record for DBSERV on the DNS server that uses

the IP address 192.168.1.10.

Users complain that they are unable to access DBSERV. Mark runs the IPCONFIG /all command from the command prompt on DBSERV. He finds the following results:



Now, Mark wants to ensure that DBSERV receives the IP address 192.168.1.10. What will he do to accomplish this?

- A. Write the MAC address of the DBSERV network adapter with dashes in the client reservation.
- B. Change the MAC address in the client reservation setting.
- C. Authorize the DHCP server.
- D. Remove the A record for DBSERV from the DNS server.

Correct Answer: B