

MTCNA^{Q&As}

MikroTik Certified Network Associate Exam

Pass MikroTik MTCNA Exam with 100% Guarantee

Free Download Real Questions & Answers **PDF** and **VCE** file from:

<https://www.pass2lead.com/mtcna.html>

100% Passing Guarantee
100% Money Back Assurance

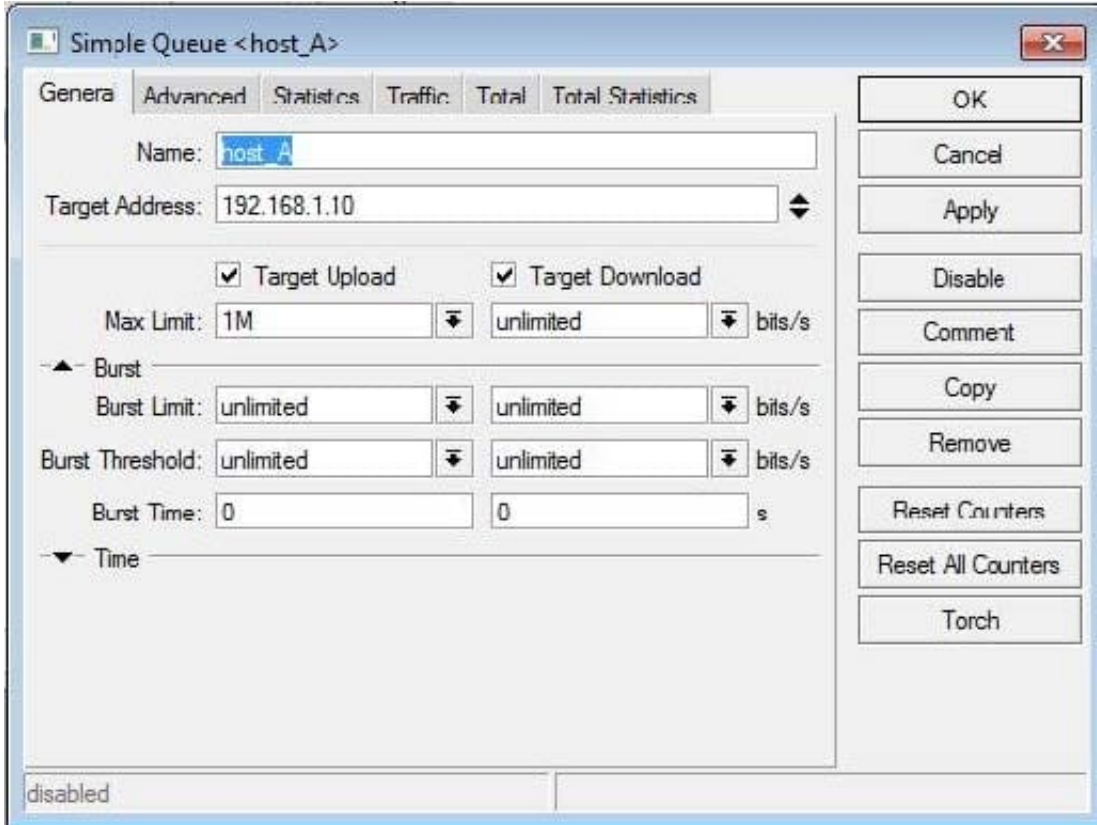
Following Questions and Answers are all new published by MikroTik
Official Exam Center

- ⚙️ **Instant Download** After Purchase
- ⚙️ **100% Money Back** Guarantee
- ⚙️ **365 Days** Free Update
- ⚙️ **800,000+** Satisfied Customers



QUESTION 1

What does this simple queue do (check the image)?



- A. Queue guarantees upload data rate of one megabit per second for host 192.168.1.10
- B. Queue limits host 192.168.1.10 download data rate to one megabit per second.
- C. Queue limits host 192.168.1.10 upload data rate to one megabit per second.
- D. Queue guarantees download data rate of one megabit per second for host 192.168.1.10

Correct Answer: C

QUESTION 2

Which of the following protocols / port s are used for SNMP. (Simple Network Management Protocol)

- A. TCP 162
- B. UDP 162
- C. UDP 161
- D. TCP 25

E. TCP 123 F. TCP 161

Correct Answer: BC

QUESTION 3

Router has wireless and ethernet client interfaces, all client interfaces are bridged. To create a DHCP service for all clients, DHCP server must be configured on:

- A. Ethernet and wireless interfaces
- B. DHCP service is not possible in this setup
- C. Every bridge port
- D. Only on the bridge interface

Correct Answer: D

QUESTION 4

You want to transfer existing `ip firewall filter` configuration from one router to a new system.

Choose the best possible way to do:

- A. Export only `ip firewall filter`
- B. Create backup only of `ip firewall filter` rules
- C. Create backup, edit backup file and restore on target router
- D. Export global configuration and remove everything apart from `ip firewall filter`

Correct Answer: A

QUESTION 5

What wireless card can we use to achieve 100 Mbps actual wireless throughput?

- A. 802.11 b/g
- B. 802.11 a/b/g
- C. 802.11 a
- D. 802.11 a/n
- E. 802.11 a/b/g/n

Correct Answer: A

QUESTION 6

What letters appear next to a route, which is automatically created by RouterOS when user adds a valid address to an active interface?

- A. I
- B. D
- C. A
- D. S
- E. C

Correct Answer: BCE

QUESTION 7

Which firewall chain would be used to block a client's MSN traffic on a router?

- A. static
- B. forward
- C. output
- D. input

Correct Answer: B

QUESTION 8

A client that has successfully connected to a wireless network is considered to be which of the following? Choose all that apply :

- A. Authenticated
- B. Associated
- C. Unauthenticated
- D. Unassociated

Correct Answer: A

QUESTION 9

What protocols are used to configure trunking on a switch?

1.

VLAN Trunking Protocol

2.

VLAN

3.

802.1Q

4.

ISL

A. 1 and 2

B. 3 and 4

C. 1 only

D. 2 only

Correct Answer: B

QUESTION 10

Which protocol does Ping use?

A. TCP

B. ARP

C. ICMP

D. BootP

Correct Answer: C

QUESTION 11

What kind of users are listed in the Secrets window of the PPP menu?

A. Hot-Spot users

B. wireless users

C. l2tp users

D. pptp users

E. pppoe users

F. winbox users

Correct Answer: CDE

QUESTION 12

In which order are the entries in Access List and Connect List processed?

- A. By Signal Strength Range
- B. By interface name
- C. In sequence order
- D. In a random order

Correct Answer: B

QUESTION 13

For user in local PPP Secrets/PPP Profiles database, it is possible to

- A. Allow/deny use of more than one login by this user
- B. Allow login by PPPoE and PPTP, but deny login by L2TP
- C. Set max values for transferred data (Rx/Tx)
- D. Allow only PPPoE login
- E. Deny services (like telnet) only for this user or for one group of users

Correct Answer: ACD

QUESTION 14

During a scan, in order to see all the available wireless frequencies that are supported by the card, the following option must be selected in the wireless card's "Frequency Mode":

- A. superchannel
- B. regulatory domain
- C. manual txpower

Correct Answer: A

QUESTION 15

What protocol does ping use?

- A. TCP
- B. ARP
- C. UDP
- D. ICMP

Correct Answer: D

[MTCNA VCE Dumps](#)

[MTCNA Practice Test](#)

[MTCNA Exam Questions](#)