

# MCPA-LEVEL1<sup>Q&As</sup>

MuleSoft Certified Platform Architect - Level 1

## Pass Mulesoft MCPA-LEVEL1 Exam with 100% Guarantee

Free Download Real Questions & Answers **PDF** and **VCE** file from:

<https://www.pass2lead.com/mulesoft-certified-platform-architect-level-1.html>

100% Passing Guarantee  
100% Money Back Assurance

Following Questions and Answers are all new published by Mulesoft  
Official Exam Center

-  **Instant Download** After Purchase
-  **100% Money Back** Guarantee
-  **365 Days** Free Update
-  **800,000+** Satisfied Customers



### QUESTION 1

What is a key requirement when using an external Identity Provider for Client Management in Anypoint Platform?

- A. Single sign-on is required to sign in to Anypoint Platform
- B. The application network must include System APIs that interact with the Identity Provider
- C. To invoke OAuth 2.0-protected APIs managed by Anypoint Platform, API clients must submit access tokens issued by that same Identity Provider
- D. APIs managed by Anypoint Platform must be protected by SAML 2.0 policies

Correct Answer: C

Reference: <https://www.folkstalk.com/2019/11/mulesoft-integration-and-platform.html>

---

### QUESTION 2

What is true about where an API policy is defined in Anypoint Platform and how it is then applied to API instances?

- A. The API policy is defined in Runtime Manager as part of the API deployment to a Mule runtime, and then ONLY applied to the specific API instance.
- B. The API policy is defined in API Manager for a specific API instance, and then ONLY applied to the specific API instance.
- C. The API policy is defined in API Manager and then automatically applied to ALL API instances.
- D. The API policy is defined in API Manager, and then applied to ALL API instances in the specified environment.

Correct Answer: B

### QUESTION 3

What is true about the technology architecture of Anypoint VPCs?

- A. The private IP address range of an Anypoint VPC is automatically chosen by CloudHub.
- B. Traffic between Mule applications deployed to an Anypoint VPC and on-premises systems can stay within a private network.
- C. Each CloudHub environment requires a separate Anypoint VPC.
- D. VPC peering can be used to link the underlying AWS VPC to an on-premises (non AWS) private network.

Correct Answer: B

Reference: <https://docs.mulesoft.com/runtime-manager/vpc-connectivity-methods-concept>

---

**QUESTION 4**

What API policy would LEAST likely be applied to a Process API?

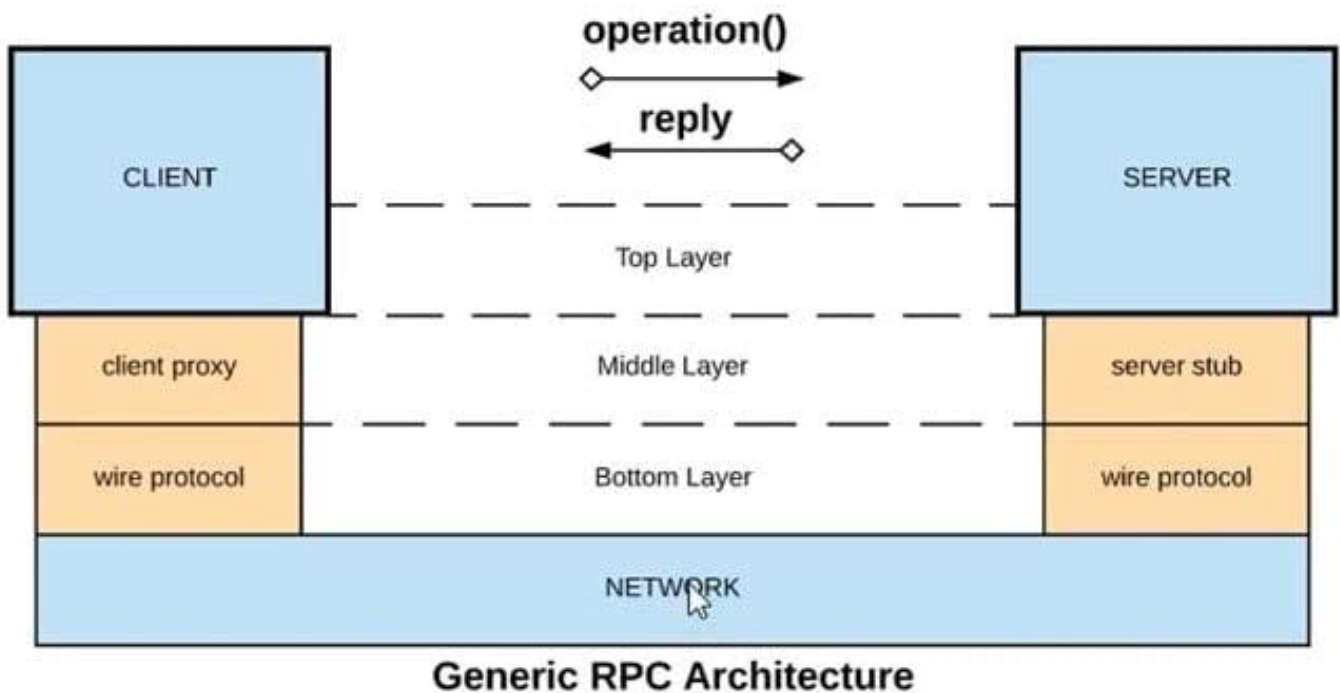
- A. Custom circuit breaker
- B. Client ID enforcement
- C. Rate limiting
- D. JSON threat protection

Correct Answer: A

Reference: <https://docs.mulesoft.com/api-manager/2.x/policy-mule3-provided-policies>

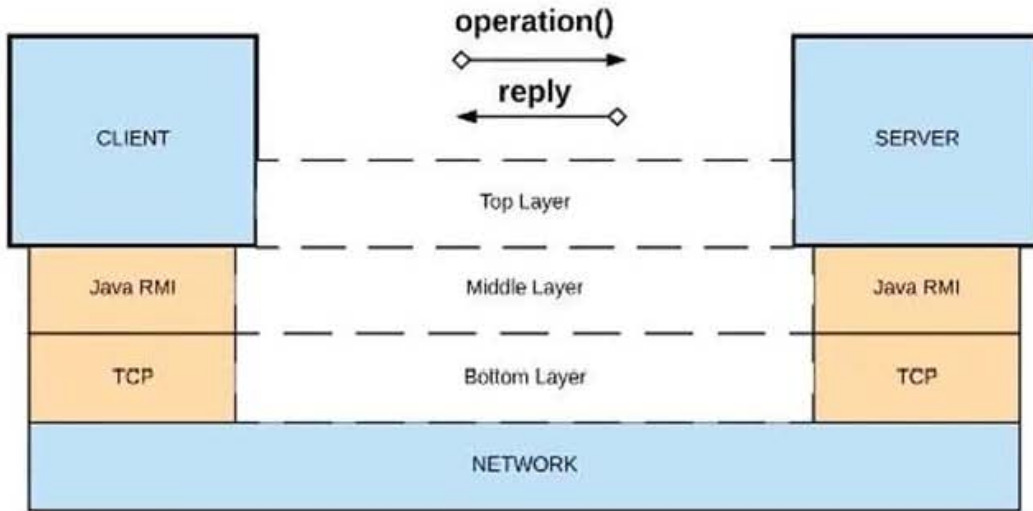
**QUESTION 5**

Refer to the exhibit.

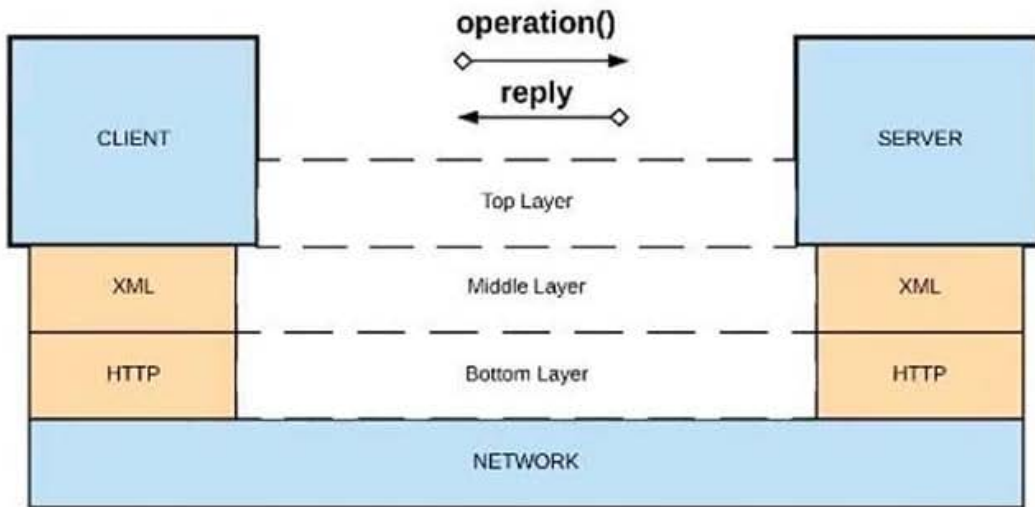


What is a valid API in the sense of API-led connectivity and application networks?

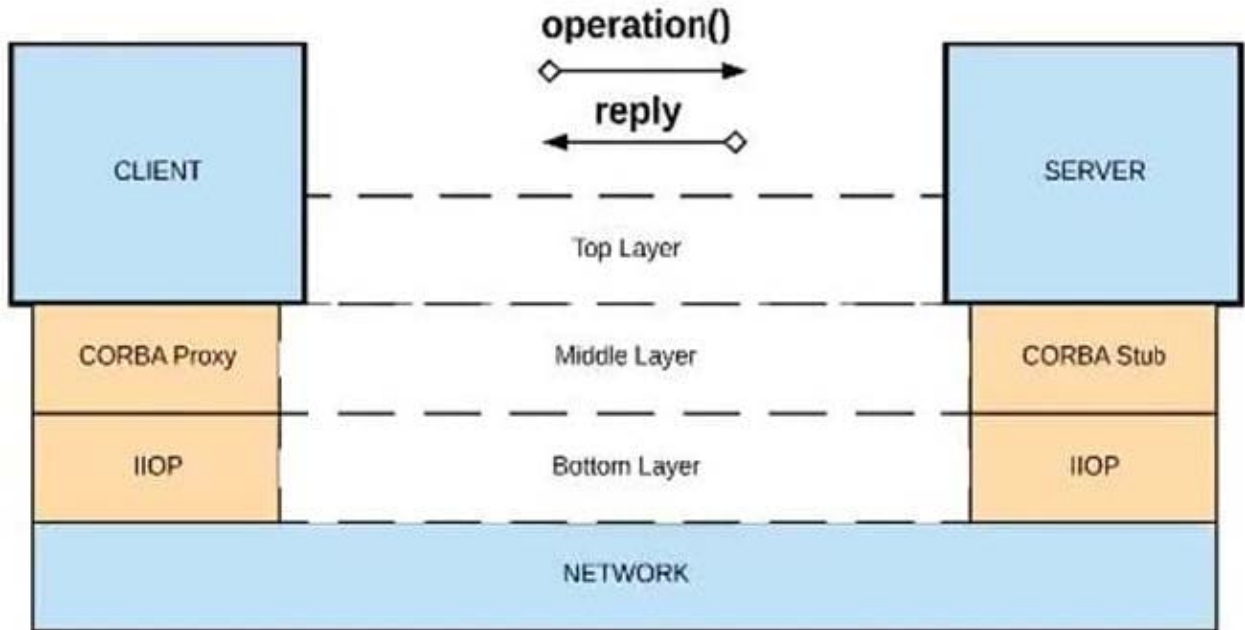
A. Java RMI over TCP



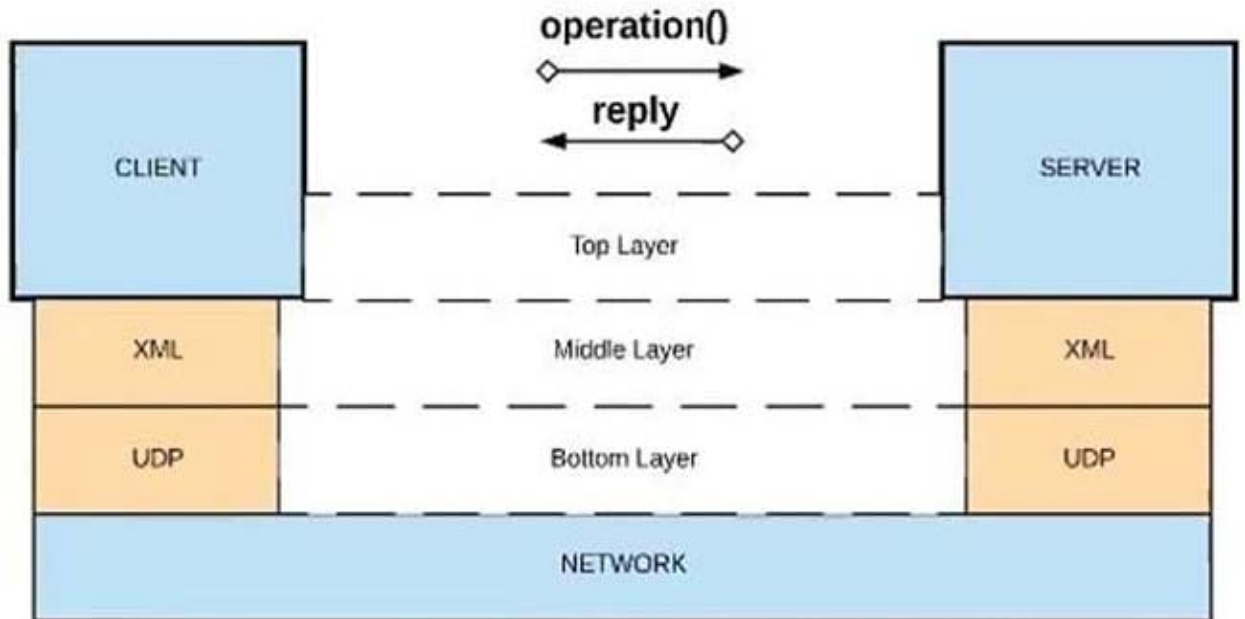
B. XML over HTTP



● C. CORBA over IIOP



● D. XML over UDP



A. Option A

B. Option B

C. Option C

D. Option D

Correct Answer: B

### QUESTION 6

A Mule application exposes an HTTPS endpoint and is deployed to the CloudHub Shared Worker Cloud. All traffic to that Mule application must stay inside the AWS VPC.

To what TCP port do API invocations to that Mule application need to be sent?

- A. 443
- B. 8081
- C. 8091
- D. 8092

Correct Answer: D

Reference: <https://help.mulesoft.com/s/question/0D52T00004mXXULSA4/multiple-http-listeners-oncloudhub-one-with-port-9090>

---

### QUESTION 7

An organization has several APIs that accept JSON data over HTTP POST. The APIs are all publicly available and are associated with several mobile applications and web applications.

The organization does NOT want to use any authentication or compliance policies for these APIs, but at the same time, is worried that some bad actor could send payloads that could somehow compromise the applications or servers running the API implementations.

What out-of-the-box Anypoint Platform policy can address exposure to this threat?

- A. Shut out bad actors by using HTTPS mutual authentication for all API invocations.
- B. Apply an IP blacklist policy to all APIs; the blacklist will include all bad actors.
- C. Apply a Header injection and removal policy that detects the malicious data before it is used.
- D. Apply a JSON threat protection policy to all APIs to detect potential threat vectors.

Correct Answer: B

---

### QUESTION 8

How are an API implementation, API client, and API consumer combined to invoke and process an API?

- A. The API consumer creates an API implementation, which receives API invocations from an API such that they are processed for an API client.
- B. The API client creates an API consumer, which receives API invocations from an API such that they are processed for an API implementation.

C. The API consumer creates an API client, which sends API invocations to an API such that they are processed by an API implementation.

D. The API client creates an API consumer, which sends API invocations to an API such that they are processed by an API implementation.

Correct Answer: C

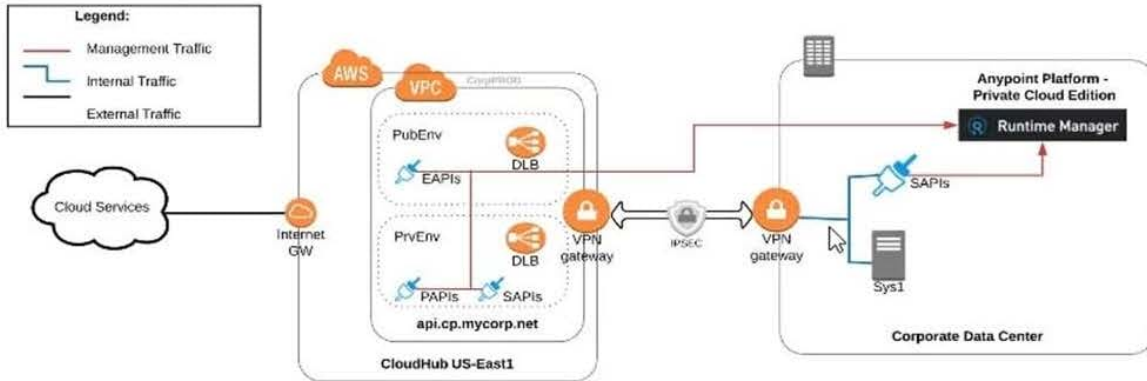
---

### QUESTION 9

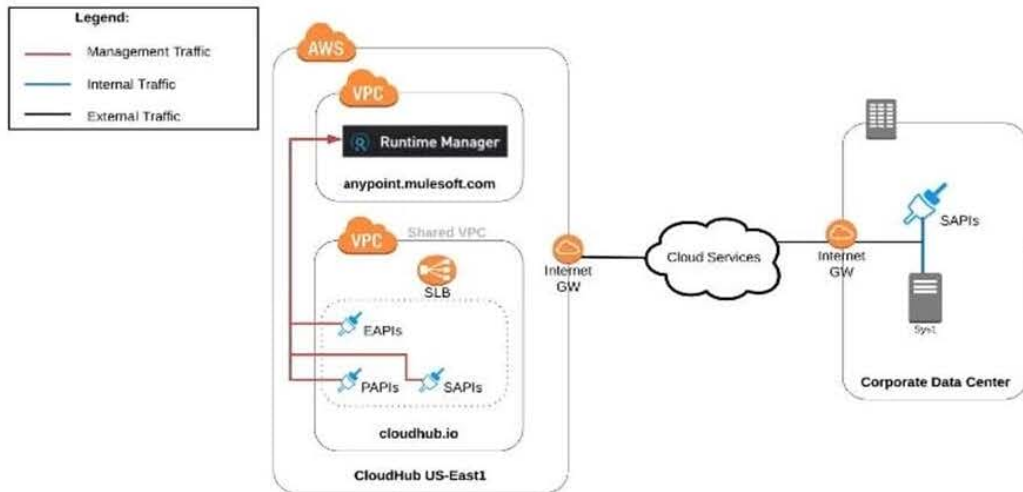
An organization uses various cloud-based SaaS systems and multiple on-premises systems. The on-premises systems are an important part of the organization's application network and can only be accessed from within the organization's intranet.

What is the best way to configure and use Anypoint Platform to support integrations with both the cloud-based SaaS systems and on-premises systems?

- Ⓐ. Use CloudHub-deployed Mule runtimes in an Anypoint VPC managed by Anypoint Platform Private Cloud Edition control plane.

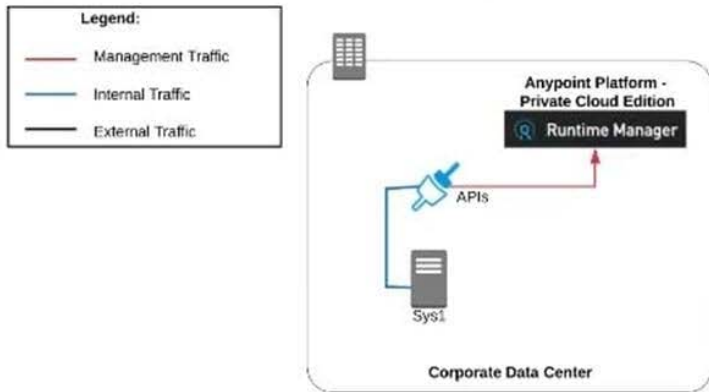


- Ⓑ. Use CloudHub-deployed Mule runtimes in the shared worker cloud managed by the MuleSoft-hosted Anypoint Platform control plane.

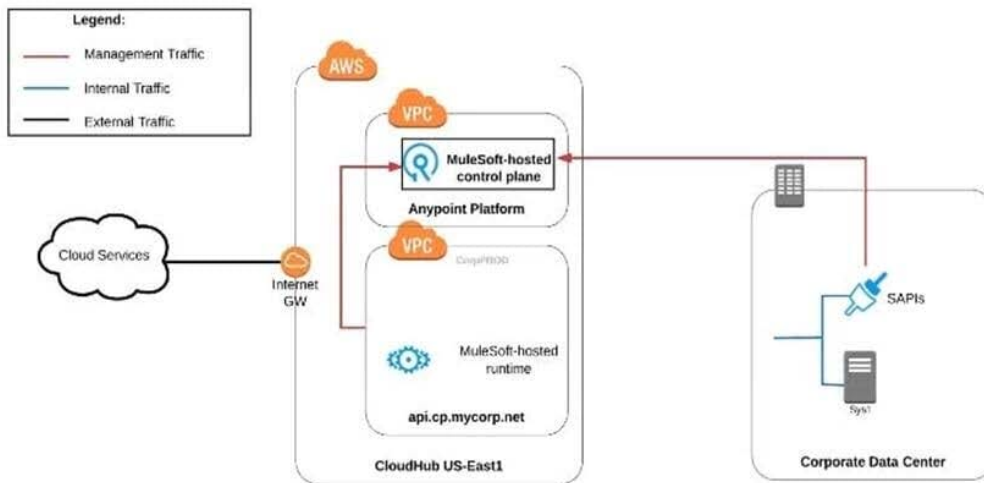




- C. Use an on-premises installation of Mule runtimes that are completely isolated with NO external network access, managed by the Anypoint Platform Private Cloud Edition control plane.



- D. Use a combination of CloudHub-deployed and manually provisioned on-premises Mule runtimes managed by the MuleSoft-hosted Anypoint Platform control plane.

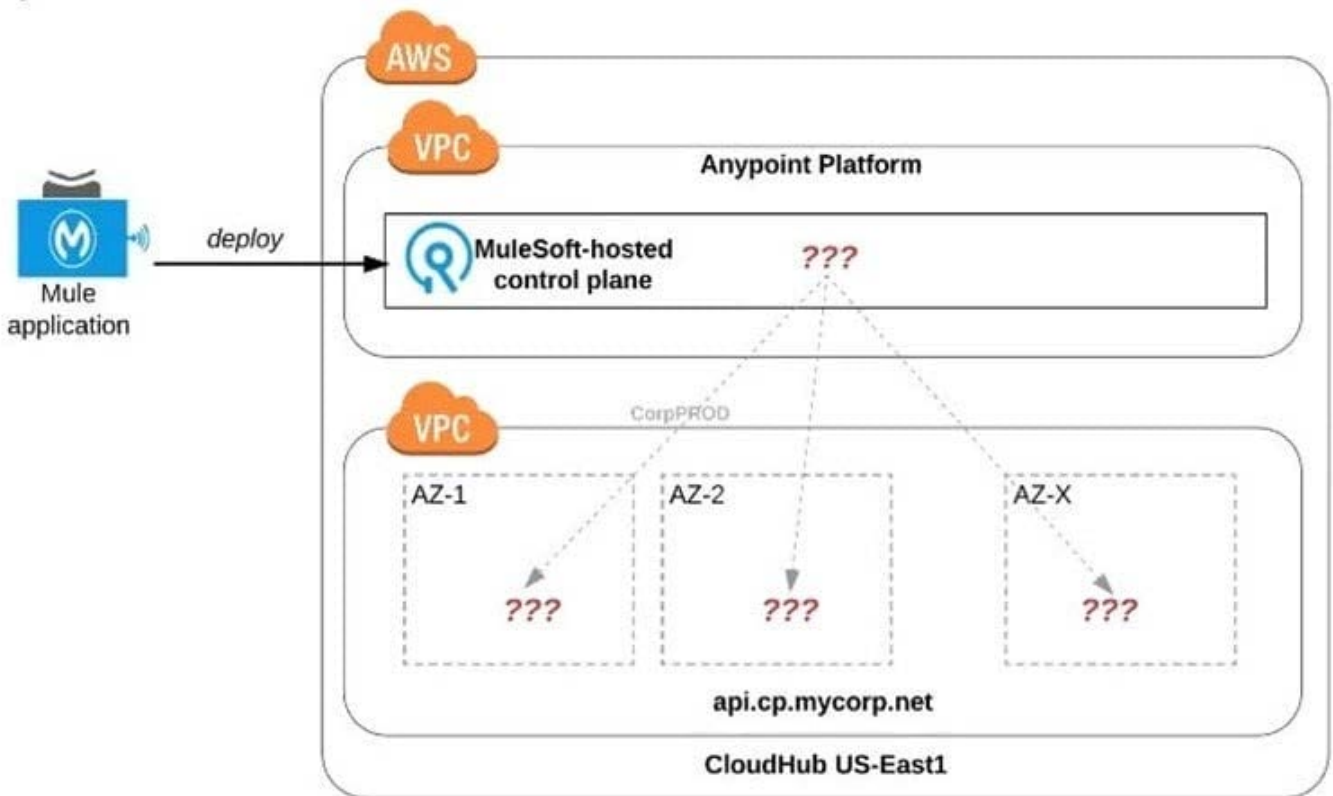


- A. Option A
- B. Option B
- C. Option C
- D. Option D

Correct Answer: B

**QUESTION 10**

Refer to the exhibit.



An organization uses one specific CloudHub (AWS) region for all CloudHub deployments.

How are CloudHub workers assigned to availability zones (AZs) when the organization's Mule applications are deployed to CloudHub in that region?

- A. Workers belonging to a given environment are assigned to the same AZ within that region.
- B. AZs are selected as part of the Mule application's deployment configuration.
- C. Workers are randomly distributed across available AZs within that region.
- D. An AZ is randomly selected for a Mule application, and all the Mule application's CloudHub workers are assigned to that one AZ.

Correct Answer: D

### QUESTION 11

What correctly characterizes unit tests of Mule applications?

- A. They test the validity of input and output of source and target systems.
- B. They must be run in a unit testing environment with dedicated Mule runtimes for the environment.
- C. They must be triggered by an external client tool or event source.
- D. They are typically written using MUnit to run in an embedded Mule runtime that does not require external connectivity.

Correct Answer: B

Reference: <https://dzone.com/articles/munit-framework>

---

#### QUESTION 12

What is the most performant out-of-the-box solution in Anypoint Platform to track transaction state in an asynchronously executing long-running process implemented as a Mule application deployed to multiple CloudHub workers?

- A. Redis distributed cache
- B. `java.util.WeakHashMap`
- C. Persistent Object Store
- D. File-based storage

Correct Answer: D

---

#### QUESTION 13

An API implementation is being designed that must invoke an Order API, which is known to repeatedly experience downtime.

For this reason, a fallback API is to be called when the Order API is unavailable.

What approach to designing the invocation of the fallback API provides the best resilience?

- A. Search Anypoint Exchange for a suitable existing fallback API, and then implement invocations to this fallback API in addition to the Order API.
- B. Create a separate entry for the Order API in API Manager, and then invoke this API as a fallback API if the primary Order API is unavailable.
- C. Redirect client requests through an HTTP 307 Temporary Redirect status code to the fallback API whenever the Order API is unavailable.
- D. Set an option in the HTTP Requester component that invokes the Order API to instead invoke a fallback API whenever an HTTP 4xx or 5xx response status code is returned from the Order API.

Correct Answer: D

---

#### QUESTION 14

What is most likely NOT a characteristic of an integration test for a REST API implementation?

- A. The test needs all source and/or target systems configured and accessible.
- B. The test runs immediately after the Mule application has been compiled and packaged.
- C. The test is triggered by an external HTTP request.

D. The test prepares a known request payload and validates the response payload.

Correct Answer: D

---

**QUESTION 15**

When could the API data model of a System API reasonably mimic the data model exposed by the corresponding backend system, with minimal improvements over the backend system's data model?

- A. When there is an existing Enterprise Data Model widely used across the organization.
- B. When the System API can be assigned to a bounded context with a corresponding data model.
- C. When a pragmatic approach with only limited isolation from the backend system is deemed appropriate.
- D. When the corresponding backend system is expected to be replaced in the near future.

Correct Answer: A

[MCPA-LEVEL1 PDF Dumps](#) [MCPA-LEVEL1 VCE Dumps](#)

[MCPA-LEVEL1 Exam Questions](#)