

# N10-007<sup>Q&As</sup>

CompTIA Network+ Certification Exam

## Pass CompTIA N10-007 Exam with 100% Guarantee

Free Download Real Questions & Answers **PDF** and **VCE** file from:

<https://www.pass2lead.com/n10-007.html>

100% Passing Guarantee  
100% Money Back Assurance

Following Questions and Answers are all new published by CompTIA  
Official Exam Center

- ⚙️ **Instant Download** After Purchase
- ⚙️ **100% Money Back** Guarantee
- ⚙️ **365 Days** Free Update
- ⚙️ **800,000+** Satisfied Customers



### QUESTION 1

Jeff, a business owner, has discovered that several of the nearby businesses have wireless networks. Jeff wants to implement a unique wireless network inside the business. Which of the following should be configured on the wireless access point to reduce interference from the other wireless networks?

- A. PPPoE authentication
- B. MAC filtering
- C. WPA encryption
- D. Wireless channel

Correct Answer: D

---

### QUESTION 2

A network technician is setting up a newly installed Internet connection at a SOHO that will support up to ten devices on the network. The company is required to provide its own router to connect to the Internet. The ISP has assigned an IP address of 173.28.199.67/32 to the office. Which of the following does the network technician need to perform to ensure all devices on the network can access the Internet?

- A. Configure the local machines to get an IP address from the ISP automatically.
- B. Configure each host with a static IP address within the 173.28.199.0 block.
- C. Configure the router's static IP and create a NAT for the local network address of 10.10.10.0/24.
- D. Configure each host to use its link local addresses for network discovery.

Correct Answer: C

---

### QUESTION 3

A network technician is performing an initial configuration of a new network switch. Per company policy, the only authorized manner for remotely administering the switch is through a command line. Which of the following protocols should the technician disable to adhere to the company policy?

- A. HTTP
- B. Telnet
- C. SSH
- D. TFTP

Correct Answer: A

---

**QUESTION 4**

A technician is wiring a new digital subscriber line in the corporate MDF. Which of the following marks the termination point?

- A. GBIC
- B. RG-6
- C. 110 block
- D. MT-RJ

Correct Answer: C

---

**QUESTION 5**

Which of the following protocols are used for accessing a command line terminal session for management purposes? (Select TWO).

- A. Telnet
- B. FTP
- C. SNMP
- D. SSH
- E. RDP

Correct Answer: AD

---

**QUESTION 6**

An administrator is receiving reports from an executive that the executive's wireless access point loses the signal frequently, even though the WAP is on the executive's desk. The office contains four other 802.11n access points. Which of the following would MOST likely correct interference problems in the executive's office?

- A. Turn off SSID broadcasting for the executive's access point
- B. Replace the 802.11n access point in the office with an 802.11a access point.
- C. Change the channel on the access point to channel 11.
- D. Turn off as many lights in the executive's office as possible to reduce interference.

Correct Answer: C

---

**QUESTION 7**

Which of the following DNS record types is an alias?

- A. CNAME
- B. PTR
- C. NS
- D. SRV

Correct Answer: A

---

### QUESTION 8

While reviewing switch logs, a network analyst notices many failed logon attempts followed by a successful logon from an unknown IP address. Which of the following hardening techniques should be utilized to prevent unauthorized access?

- A. Avoiding common passwords
- B. File hashing
- C. Disabling unused IP ports
- D. Using secure protocols

Correct Answer: A

---

### QUESTION 9

Multiple users are reporting that they are unable to access the network. The ENTIRE network is shown in the diagram. PCs are not statically assigned IP addresses. The following devices will display settings:

WorkstationA WorkstationB WorkstationC WorkstationD WorkstationE WorkstationF WorkstationG Laptop1 Laptop2  
DHCP server1 DHCP server2

Review the settings and select the box in the diagram that identifies the device causing the issue. Only one device can be selected at a time.

After checking the device that is causing the issue, select the second tab in the lower left hand corner. Identify the reason as to why some users are unable to access the network.

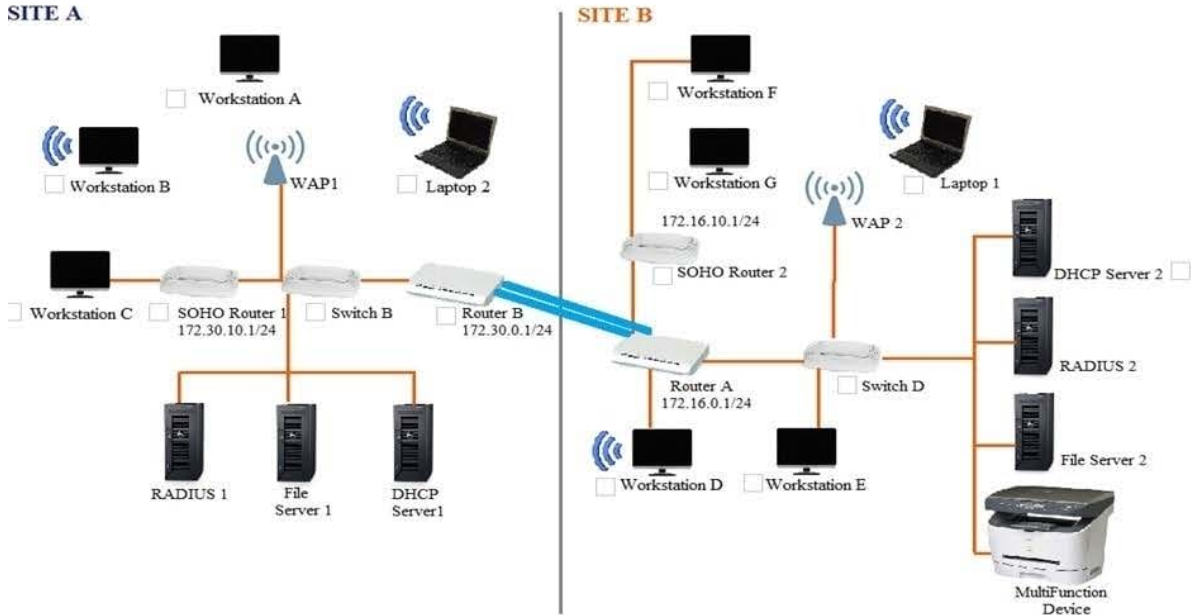
Instructions:

When the simulation is complete, select the Done button to submit.

Part 1 Identify the reason as to why some users are unable to access the network.

**Site A and B Network Diagram**

Instructions: Only one device can be selected at a time. Please ensure you complete Part 1 and Part 2 of the simulation.



**WORKSTATION A**

IP Address	172.30.0.10
Netmask	255.255.255.0
Gateway	172.30.0.1

OK

**WORKSTATION B**

IP Address	172.30.0.14
Netmask	255.255.255.0
Gateway	172.30.10.1

OK

**WORKSTATION C**

IP Address	169.254.200.67
Netmask	255.255.255.0
Gateway	

OK

**WORKSTATION D**

IP Address	172.16.0.221
Netmask	255.255.255.0
Gateway	172.16.0.1

OK

**WORKSTATION E**

IP Address	172.16.0.21
Netmask	255.255.255.0
Gateway	172.16.0.1

OK

**WORKSTATION F**

IP Address	172.16.10.43
Netmask	255.255.255.0
Gateway	172.16.10.1

OK

**WORKSTATION G**

IP Address	172.16.10.120
Netmask	255.255.255.0
Gateway	172.16.10.1

OK

**LAPTOP 1**

IP Address	172.16.0.220
Netmask	255.255.255.0
Gateway	172.16.0.1

OK

**LAPTOP 2**

IP Address	172.30.0.12
Netmask	255.255.255.0
Gateway	172.30.0.1

OK

**DHCP SERVER 1**

IP Address	172.30.0.5
Netmask	255.255.255.0
Gateway	172.30.0.1

DHCP Scope	172.30.0.10-250
Gateway	172.30.0.1
DNS Servers	10.200.2.20, 10.200.3.20
DHCP Lease Time	8 days

OK

**DHCP SERVER 2**

IP Address	172.30.0.5
Netmask	255.255.255.0
Gateway	172.16.0.1

DHCP Scope	172.16.0.10-250
Gateway	172.16.0.1
DNS Servers	10.200.2.20, 10.200.3.20
DHCP Lease Time	8 days

OK

- A. Workstation(s) are plugged into switch ports configured with half duplex.
- B. The site-to-site router was configured with the incorrect ACL.
- C. DHCP server scope is full and is not providing IP addresses.
- D. WAN and LAN ports are reversed on the router.
- E. STP had disabled some of the ports on the switch.
- F. The NIC driver is not installed.
- G. A wireless client is unable to associate to the AP.

Correct Answer: G

---

#### QUESTION 10

A technician is working on a new machine that has been procured for testing and development. The machine will run a hypervisor and host several operating systems of various types so the development team can test the company's applications in a variety of environments. The technician wants the virtual machines to be available to communicate with each other without leaving the hypervisor. Which of the following is the BEST solution to the problem?

- A. The technician should connect the machine to its own separate switch.
- B. The technician should add a route in each virtual machine to the default gateway.
- C. The technician should configure a virtual switch.
- D. The technician should set up individual routes between the machines.

Correct Answer: C

---

#### QUESTION 11

A network technician is attempting to troubleshoot a connectivity issue. The issue is only reported during the evening hours, and only a single workstation loses connectivity. Which of the following is the MOST likely cause of the issue?

- A. The router has time-based ACL applied for the network segment.
- B. A light source is creating EMI interference, affecting the UTP.
- C. Nightly backups are consuming excessive bandwidth.
- D. The user has violated the AUP, and Internet access has been restricted

Correct Answer: D

---

#### QUESTION 12

A customer wishes to network several computers throughout a large warehouse containing numerous metal shelves



and concrete walls. The computers are at least 175 meters (574 feet) apart. Which of the following media types should be recommended for the customer using only a single switch?

- A. Fiber optic
- B. Wireless
- C. CAT5e
- D. CAT3

Correct Answer: A

**QUESTION 13**

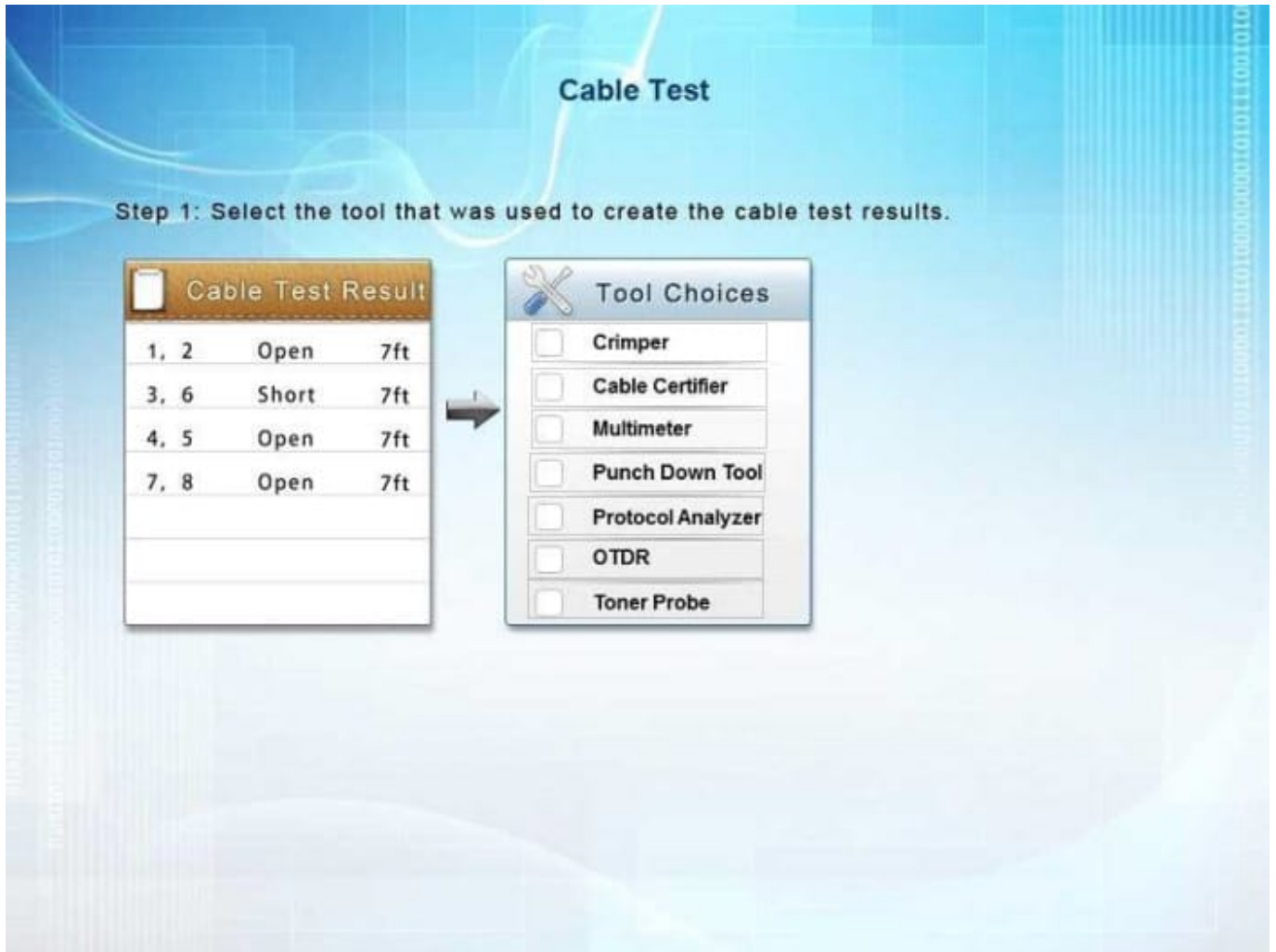
You have been tasked with testing a CAT5e cable. A summary of the test results can be found on the screen.

Step 1: Select the tool that was used to create the cable test results.

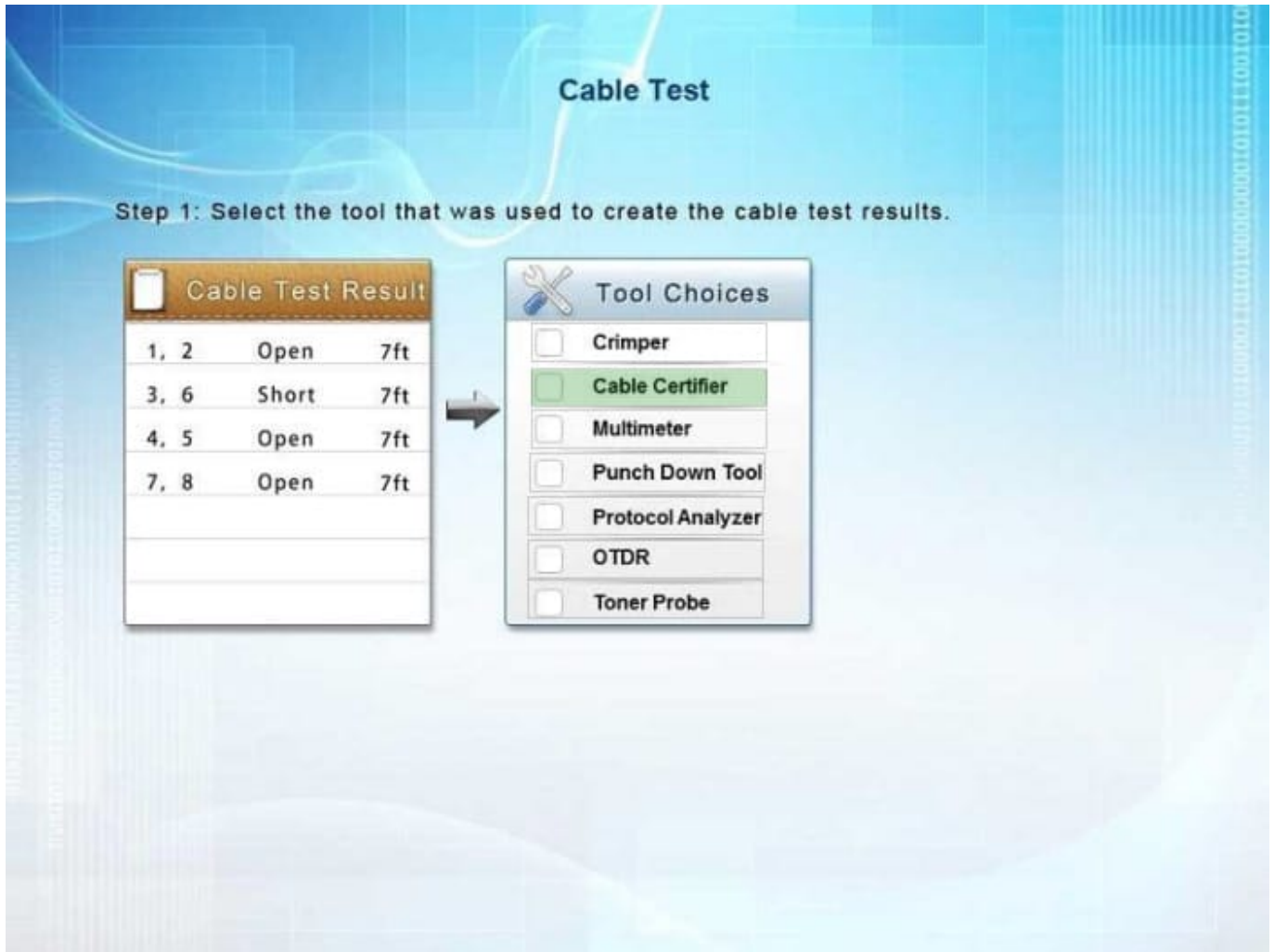
Step 2: Interpret the test results and select the option that explains the results. After you are done with your analysis, click the 'Submit Cable Test Analysis' button.



Hot Area:



Correct Answer:



A Cable Certifier provides “Pass” or “Fail” information in accordance with industry standards but can also show detailed information when a “Fail” occurs. This includes shorts, the wire pairs involved and the distance to the short. When a short is identified, at the full length of the cable it means the cable has not been crimped correctly.

#### QUESTION 14

Which of the following use cases would justify the deployment of an mGRE hub-and-spoke topology?

- A. An increase in network securing using encryption and packet encapsulation
- B. A network expansion caused by an increase in the number of branch locations to the headquarters
- C. A mandatory requirement to increase the deployment of an SDWAN network.
- D. An improvement in network efficiency by increasing the useful packet payload.

Correct Answer: B

#### QUESTION 15

A technician needs to test the length of a newly installed cable run because it is believed that it exceeds the maximum specification length. Which of the following tools should be used?

- A. Cable certifier
- B. Toner probe
- C. Cable tester
- D. Protocol analyzer

Correct Answer: A

[Latest N10-007 Dumps](#)

[N10-007 Practice Test](#)

[N10-007 Braindumps](#)