

NS0-509^{Q&As}

NetApp Certified Implementation Engineer - SAN - ONTAP

Pass NetApp NS0-509 Exam with 100% Guarantee

Free Download Real Questions & Answers **PDF** and **VCE** file from:

<https://www.pass2lead.com/ns0-509.html>

100% Passing Guarantee
100% Money Back Assurance

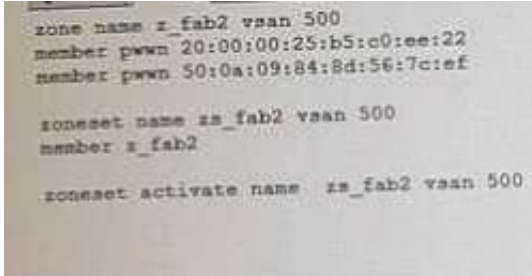
Following Questions and Answers are all new published by NetApp
Official Exam Center

- ⚙️ **Instant Download** After Purchase
- ⚙️ **100% Money Back** Guarantee
- ⚙️ **365 Days** Free Update
- ⚙️ **800,000+** Satisfied Customers



QUESTION 1

Exhibit.



```
zone name z_fab2 vsan 500
member pwn 20:00:00:25:b5:c0:ee:22
member pwn 50:0a:09:84:8d:56:7c:ef

zone set name zs_fab2 vsan 500
member z_fab2

zone set activate name zs_fab2 vsan 500
```

You are adding a boot LUN for a new server. The server uses FCP attached through a CN The ONTAP cluster is also attached to the same fabric by way of UTA2. You configure the zoning for the fabric as shown in the exhibit. You discover that the server cannot see its boot LUN.

What is the problem with your zoning configuration?

- A. The zone set must have the same name as the zone.
- B. The zone was not activated.
- C. The zone used a wrong zone ID.
- D. The WWPN for the NetApp LIF is incorrect.

Correct Answer: D

QUESTION 2

A customer recently added two nodes with FC ports to a 4-node cluster.

Which SVM configuration is needed before the customer creates LUNs on the new nodes?

- A. The FC service needs to be enabled on the data SVM.
- B. The existing LIFs need to be migrated to the new nodes.
- C. New FC LIFs need to be created on the cluster SVM.
- D. New FC LIFs need to be created on the new nodes.

Correct Answer: D

Reference: <https://docs.netapp.com/ontap-9/index.jsp?topic=%2Fcom.netapp.doc.expand%2FGUIDE3BB89AF-6251-4210-A979-130E845BC9A1.html>

QUESTION 3

An administrator is migrating from a third-party's SAN to a newly purchased FAS9000. The administrator decides to use the NetApp Foreign LUN Import (FL1) process. What must the administrator do for this process to work properly?

- A. Create multiple igroups for the Initiator ports.
- B. Create six distinct zones that include specific ports within each zone.
- C. Zone target ports of source storage with initiator ports of destination storage.
- D. Make the destination LUN larger than the foreign LUN.

Correct Answer: C

QUESTION 4

You are configuring both NVMe and FC on the same AFF A700 2-node ONTAP 9.5 cluster. You are also configuring both protocols on the same FC fabric using the same A700 HBA ports.

In this scenario, which three configurations are supported? (Choose three.)

- A. 16 GB HBAs
- B. 8 GB HBAs
- C. 16 GB fabrics
- D. 32 GB HBAs
- E. 32 GB fabrics

Correct Answer: BCD

QUESTION 5

You have a 4-node cluster with an AFF A300 HA pair and a FAS8200 HA pair. You plan on using the default storage efficiency settings. With inline data compaction, you estimate that you can save 6% of storage space. AFF A300 volumes that use under 5,000 IOPS are moved to a FAS8200 using the volume move command.

In this scenario, what happens to the data after the volume is moved? (Choose two.)

- A. The new written data is not compacted.
- B. The existing data is compacted.
- C. The new written data is compacted.
- D. The existing data is not compacted.

Correct Answer: AB

Reference: <https://www.netapp.com/us/media/tr-4476.pdf>

QUESTION 6

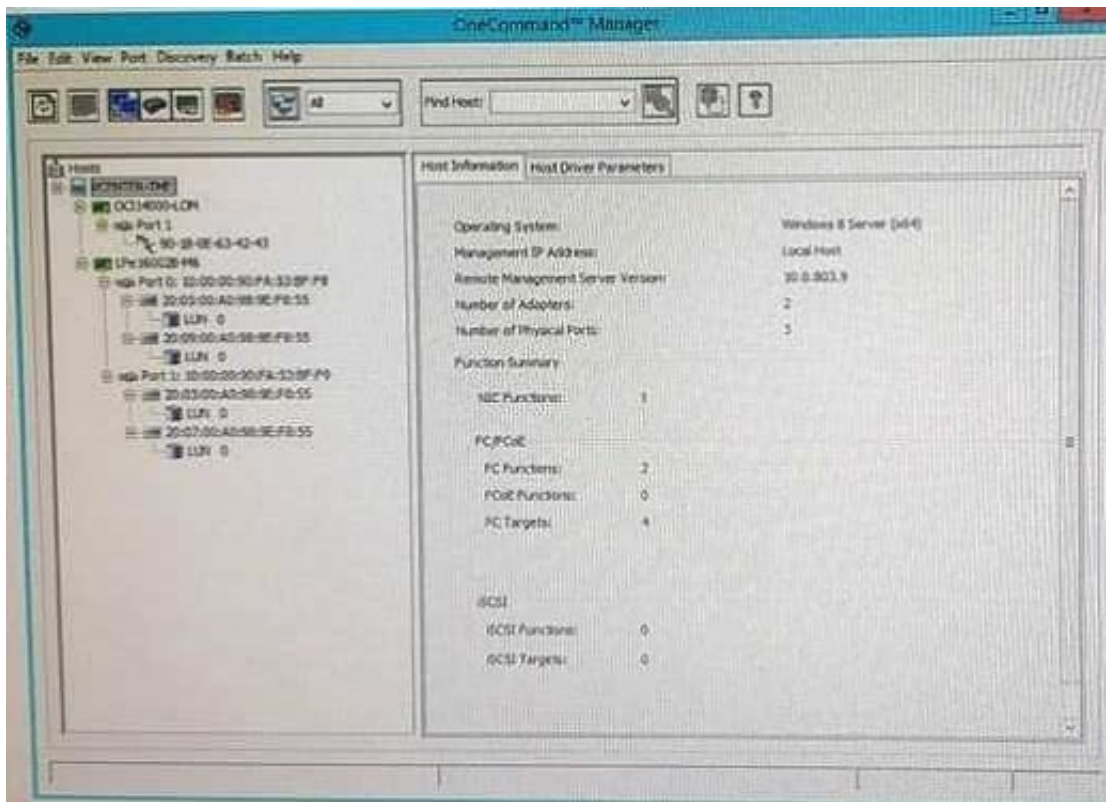
An administrator is planning a hardware refresh and data migration from a Data ONTAP 7.3 system to new AFF A3-00 cluster that is using ONTAP 9.0. The Mode system only serves FC LUNs to a Windows 2012Rs server cluster that needs to remain connected after migration Referring to the scenario, which method would be used for the LUN migration.

- A. Unified Host Utility Kit
- B. 7-Mode Transition Tool (7MIT)
- C. Foreign LUN import (FLI)
- D. Oncommand system Manager

Correct Answer: B

QUESTION 7

Exhibit.



Referring to the exhibit, what is the total number of target LUNs that are being accessed?

- A. 4
- B. 1

C. 2

D. 8

Correct Answer: B

QUESTION 8

Which NetApp tool views automated, schedule configuration, and performance data for a customer's SAN from a Web browser?

A. Virtual Storage Console

B. OnCommand Workflow Analyzer

C. Config Advisor

D. Active IQ

Correct Answer: B

QUESTION 9

Which two scenarios in deploying ONTAP Cloud are supported by the Cloud Manager tool? (Choose two.)

A. ONTAP Cloud deployed as an HA pair on IBM Cloud

B. ONTAP Cloud deployed as an HA pair on VMware

C. ONTAP Cloud deployed as a single instance on Microsoft Azure

D. ONTAP Cloud deployed as an HA pair on Amazon Web Services

Correct Answer: CD

QUESTION 10

You have inherited a small FC SAN infrastructure that consists of 15 servers (hosts), two Cisco MDS 9148s switches, and a 4-node NetApp AFF A300 cluster. You suspect that your predecessor did not configure zoning according to best practices.

In this scenario, what information is necessary to audit your SAN zoning? (Choose two.)

A. SVM WWNNs

B. SVN LIF WWPNs

C. Controller port WWPNs

D. Host GBA WWPNS

Correct Answer: BD

QUESTION 11

A customer wants to use both Cisco FC and FCoE switches in their ONTAP environment. According to NetApp best practices, what are two requirements in this scenario? (Choose two.)

- A. You must use single initiator zoning.
- B. You must create interface groups to isolate FC and FCoE LIFs.
- C. You must create a trunk with multiple virtual LANs.
- D. You must not have more than one target UF for the same physical port in a single fabric zone.

Correct Answer: AD

QUESTION 12

You are planning to set up a new SAN with an AFF A300 2-node switchless cluster. Your SAN fabric will consist of Cisco MDS9148s switches.

According to NetApp best practices, which two actions would be required to accomplish this task? (Choose two.)

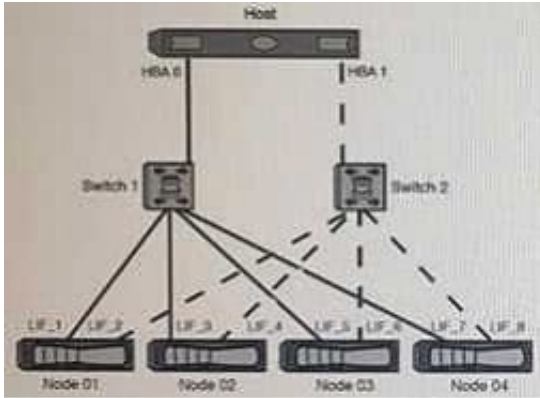
- A. Set the switchport speed setting to 16 Gb.
- B. Use single initiator, multiple target zoning.
- C. Use multiple initiator, single target zoning.
- D. Set the switchport speed to auto negotiate.

Correct Answer: BD

Reference: <https://docs.netapp.com/ontap-9/index.jsp?topic=%2Fcom.netapp.doc.dot-mcc-inst-cnfg-fabric%2FGUID-DA51E013-0C96-4D55-9E35-39CDE07082E9.html>

QUESTION 13

Exhibit.



Referring to the exhibit, which type of zoning should be used?

- A. a WWPN with a single initiator and multiple targets
- B. a WWPN with a single initiator and a single target
- C. a WWNN with a single initiator and multiple targets
- D. a WWNN with a single Initiator and a single target

Correct Answer: B

QUESTION 14

As a system administrator, you perform a routine check of available storage space on your FAS2750. You notice that the vol_1 volume is approaching 100% capacity. The volume is configured with the space guarantee set to volume and the LUN reservation is disabled. You want to free up space in the volume without increasing its size.

Which action would accomplish this task?

- A. Increase the size of the LUN.
- B. Increase the Snapshot Reserve.
- C. Increase the aggregate size.
- D. Use deduplication.

Correct Answer: C

QUESTION 15

You need to move a LUN non-disruptively from an AFF A200 HA pair to an AFF A700 HA pair within the same 4-node cluster using the steps shown below.

1.

Scan the host OS to discover all paths to the LUN.

2.
Execute the lun move command to move the LUN to the AFF A/00 HA pair.
3.
Remove the AFF A200 HA pair from the reporting-nodes list.
4.
Add the AFF A700 HA pair to the reporting-nodes list. What is the correct sequence in performing, these steps?
- A. 1, 2, 3, 4
 - B. 4, 1, 2, 3
 - C. 4, 3, 2, 1
 - D. 3, 2, 1,4

Correct Answer: B

[NS0-509 Study Guide](#)

[NS0-509 Exam Questions](#)

[NS0-509 Braindumps](#)