

NS0-520^{Q&As}

NetApp Certified Implementation Engineer - SAN ONTAP

Pass NetApp NS0-520 Exam with 100% Guarantee

Free Download Real Questions & Answers **PDF** and **VCE** file from:

<https://www.pass2lead.com/ns0-520.html>

100% Passing Guarantee
100% Money Back Assurance

Following Questions and Answers are all new published by NetApp
Official Exam Center

- ⚙️ **Instant Download** After Purchase
- ⚙️ **100% Money Back** Guarantee
- ⚙️ **365 Days** Free Update
- ⚙️ **800,000+** Satisfied Customers



QUESTION 1

Which NetApp tool provides a detailed inventory of SAN components?

- A. Active IQ OneCollect
- B. Interoperability Matrix Tool
- C. Active IQ config advisor
- D. Hardware Universe

Correct Answer: A

ActiveIQ OneCollect is a tool from NetApp that will create an inventory of your environment that will include hosts, switches and storage and validate it against the IMT (Interoperability Matrix Tool).

QUESTION 2

Question	Exhibit
----------	---------

```
::> volume show -vserver svml -fields space-guarantee
vserver  volume space-guarantee
-----
svml     voll    volume

::> tun show -fields space-reserve
vserver path                               space-reserve
-----
svml    /vol/voll/qtreel/lun1  disabled
```

Referring to the exhibit, which container gains space savings from deduplication, compression and compaction?

- A. the aggregate
- B. the qtree
- C. the volume
- D. the LUN

Correct Answer: C

QUESTION 3

When planning out a new FC SAN implementation for a AFF cluster, which two variables should be considered for a highly-available, resilient solution? (Choose two.)

- A. Length of LC/LC optic cables
- B. Multiple disk shelves
- C. Multiple PDUs connected to separate circuits
- D. Data-fabric zones using multiple switches

Correct Answer: CD

QUESTION 4

The ESX host reports inconsistent performance for iSCSI-based connectivity. In this scenario, what would cause this problem?

- A. The host and storage are connected to different switches.
- B. The flow control was disabled on the storage.
- C. The hardware initiators were used instead of software.
- D. The flow control is enabled on the storage.

Correct Answer: B

QUESTION 5

Exhibit.

```
Vserver Name: AFF_SAN_DEFAULT_SVM
  LUN Path: /vol/OraFinProd_oradata_OraFinProd_1/oradata_OraFinProd_1
  Volume Name: OraFinProd_oradata_OraFinProd_1
  Qtree Name: ""
  LUN Name: oradata_OraFinProd_1
  LUN Size: 2.50GB
  OS Type: linux
  Space Reservation: disabled
  Serial Number: 807Jd|I3aoSX
  Serial Number (Hex): 3830374a645d4933616f5358
  Comment:
  Space Reservations Honored: false
  Space Allocation: enabled
  State: online
  LUN UUID: 6b328b3e-889e-4512-a62b-6e830a22861b
  Mapped: mapped
  Block Size: 512
```

The exhibit shows the `lun show` command output for the oradata oraFinProd_I LUN.

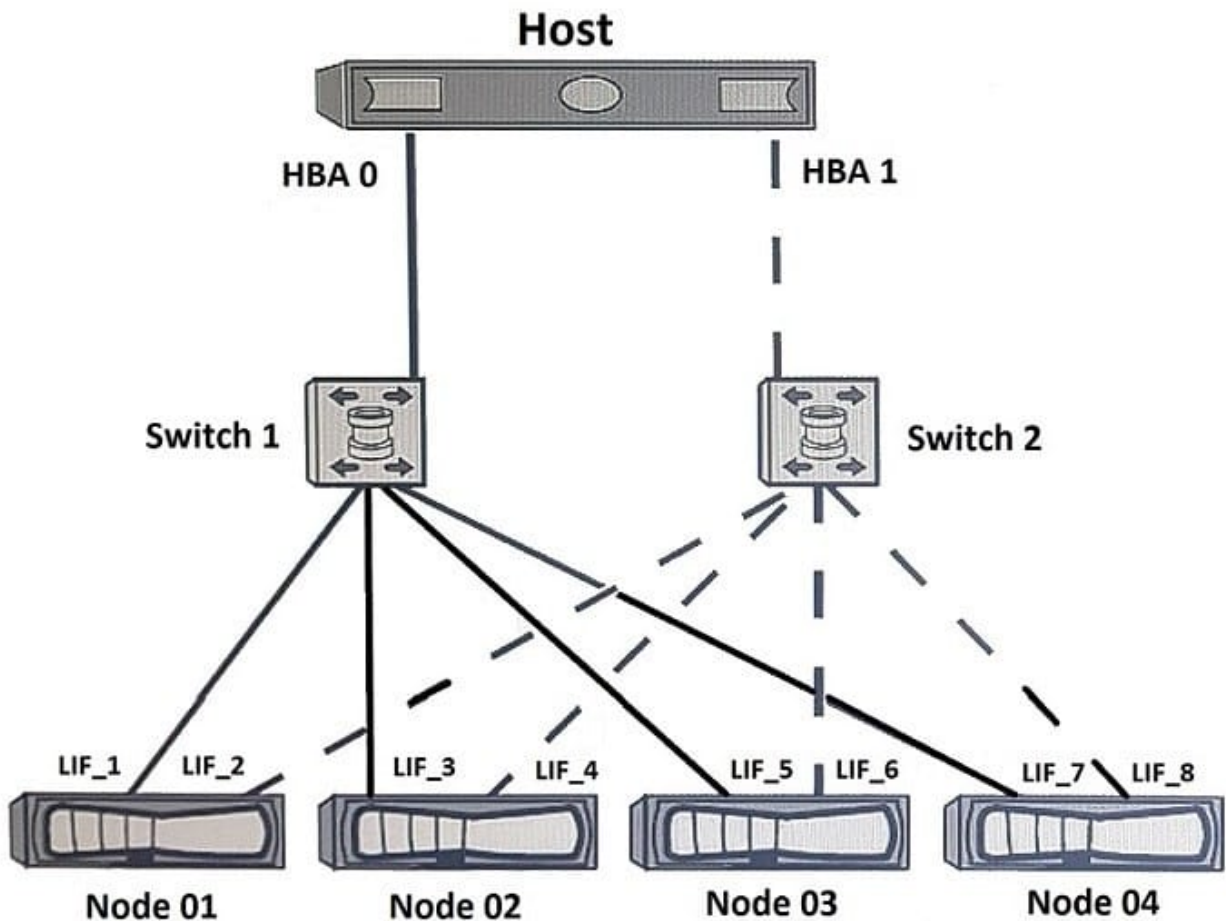
Which two statements are correct about the LUN? (Choose two.)

- A. The LUN is thick provisioned.
- B. The LUN supports SCSI Thin unmap.
- C. The LUN type is Windows.

D. The LUN is thin provisioned.

Correct Answer: BD

QUESTION 6



You configured a SAN host with a 4-node ONTAP 9.5 cluster that uses default settings. All paths are available from the host to the four nodes. You have a requirement to see only two paths to each LUN. One path is optimized and the other is non-optimized.

In this scenario, which NetApp SAN feature supports this requirement?

- A. portsets
- B. SLM
- C. VLANs
- D. igroups

Correct Answer: C

QUESTION 7

A4-node ONTAP FAS9000 cluster was used to serve I/O from six RedHat 7.3 servers. The servers were configured with maximum, queue depth.

For production purposes, an additional 60 similarly configured hosts were added to the environment. Later, the hosts started reporting random QFull errors, and the aggregated performance degraded.

Which two solutions would alleviate the QFull errors and performance problems? (Choose two.)

- A. Remove Selective LUN Mapping (SIM) from the 4-node FAS9000 cluster.
- B. Download the latest FC HBA driver, firmware, and BIOS, and deploy them on the hosts.
- C. Configure and use additional FC target HBAs in the FAS9000 cluster.
- D. Reduce FC HBA queue depth on the hosts.

Correct Answer: CD

QUESTION 8

Question	Exhibit																																																												
	<pre>scaling::> run -node scaling-01 -command fcp topology show Switches connected on adapter 0c: Switch Name: switch Switch Vendor: Cisco Systems, Inc. Switch Release: 4.2(1)N1(1) Switch Domain: 75 Switch WWN: 23:e9:00:0d:ec:b4:94:01</pre> <table border="1"><thead><tr><th>Port</th><th>Port</th><th>WWPN</th><th>State</th><th>Type</th><th>Attached WWPN</th></tr></thead><tbody><tr><td>vfc1</td><td>20:00:00:0d:ec:b4:94:3f</td><td></td><td>Offline</td><td>none</td><td></td></tr><tr><td>vfc2</td><td>20:01:00:0d:ec:b4:94:3f</td><td></td><td>Offline</td><td>none</td><td></td></tr><tr><td>vfc3</td><td>20:02:00:0d:ec:b4:94:3f</td><td></td><td>Offline</td><td>none</td><td></td></tr><tr><td>vfc4</td><td>20:03:00:0d:ec:b4:94:3f</td><td></td><td>Offline</td><td>none</td><td></td></tr><tr><td>vfc5</td><td>20:04:00:0d:ec:b4:94:3f</td><td></td><td>Offline</td><td>none</td><td></td></tr><tr><td>2/1</td><td>20:41:00:0d:ec:b4:94:00</td><td></td><td>Offline</td><td>none</td><td></td></tr><tr><td>2/2</td><td>20:42:00:0d:ec:b4:94:00</td><td></td><td>Online</td><td>F-port</td><td>50:0a:09:80:00:05:a2:40</td></tr><tr><td>2/3</td><td>20:43:00:0d:ec:b4:94:00</td><td></td><td>Online</td><td>F-port</td><td>50:0a:09:85:8d:9d:bf:ce</td></tr><tr><td>2/4</td><td>20:44:00:0d:ec:b4:94:00</td><td></td><td>Online</td><td>F-port</td><td>50:0a:09:85:8d:ad:c0:02</td></tr></tbody></table>	Port	Port	WWPN	State	Type	Attached WWPN	vfc1	20:00:00:0d:ec:b4:94:3f		Offline	none		vfc2	20:01:00:0d:ec:b4:94:3f		Offline	none		vfc3	20:02:00:0d:ec:b4:94:3f		Offline	none		vfc4	20:03:00:0d:ec:b4:94:3f		Offline	none		vfc5	20:04:00:0d:ec:b4:94:3f		Offline	none		2/1	20:41:00:0d:ec:b4:94:00		Offline	none		2/2	20:42:00:0d:ec:b4:94:00		Online	F-port	50:0a:09:80:00:05:a2:40	2/3	20:43:00:0d:ec:b4:94:00		Online	F-port	50:0a:09:85:8d:9d:bf:ce	2/4	20:44:00:0d:ec:b4:94:00		Online	F-port	50:0a:09:85:8d:ad:c0:02
Port	Port	WWPN	State	Type	Attached WWPN																																																								
vfc1	20:00:00:0d:ec:b4:94:3f		Offline	none																																																									
vfc2	20:01:00:0d:ec:b4:94:3f		Offline	none																																																									
vfc3	20:02:00:0d:ec:b4:94:3f		Offline	none																																																									
vfc4	20:03:00:0d:ec:b4:94:3f		Offline	none																																																									
vfc5	20:04:00:0d:ec:b4:94:3f		Offline	none																																																									
2/1	20:41:00:0d:ec:b4:94:00		Offline	none																																																									
2/2	20:42:00:0d:ec:b4:94:00		Online	F-port	50:0a:09:80:00:05:a2:40																																																								
2/3	20:43:00:0d:ec:b4:94:00		Online	F-port	50:0a:09:85:8d:9d:bf:ce																																																								
2/4	20:44:00:0d:ec:b4:94:00		Online	F-port	50:0a:09:85:8d:ad:c0:02																																																								

A customer has an AFF A700 connected to a Cisco switch and has verified connectivity but cannot see any LUNs. The customer issued the run -node scaling-01 -command fcp topology show command to verify the connection. Referring to the exhibit, what needs to be enabled on the Cisco switch?

- A. Trunking needs to be enabled.
- B. VSAN needs to be enabled.

- C. NPIV needs to be enabled.
- D. VFC needs to be enabled.

Correct Answer: D

QUESTION 9

When booting your NetApp storage system for the first time the system fails to boot.

What should you do first to address this problem?

- A. You turn off your storage system and disk shelves, and then turn on the disk shelves. You then check the quick reference card that came with the disk shelf for information about LED responses.
- B. You re-download the boot image to the compact flash card, then reboot the system.
- C. You look for a description of the problem on the LCD and console. You then follow the instructions, if provided, on the LCD and console.
- D. You verify disk shelf compatibility and check the disk shelf IDs to verify that the disk shelf 1 (for DS14 series) must be connected to your system.

Correct Answer: C

QUESTION 10

You install an ASA AFF A400 system with 32 GB FC SFP+ modules in port 0e and 0f. After creating the SVM and configuring the FCP protocol, the physical port stays offline. Referring to the exhibit which statement is correct?

```
cluster1::> system hardware unified-connect show
```

Node	Adapter	Current Mode	Current Type	Pending Mode	Pending Type	Admin Status
cluster1-01	0e	cna	target	-	-	offline
cluster1-01	0f	cna	target	-	-	offline

- A. The current type of the ports must be configured as an initiator
- B. The current mode to the ports must be configured as an FC port
- C. The current mode for the ports must be set as an NVMe/FC port
- D. The admin status is manually set to down

Correct Answer: B

Before using your UTA ports on a FC infrastructure, you need to modify the current mode from CNA to FC. You need to set the ports offline before you modify that parameter.

You can find more information on this link:

<http://docs.netapp.com/ontap-9/index.jsp?topic=%2Fcom.netapp.doc.dot-cm-sanag%2FGUID-E2CD31BE-28EC-468E-AF49-83A641575799.html>

QUESTION 11

Question

Exhibit

```
::> volume efficiency show -inst

Vserver Name: svm1
Volume Name: voll
Volume Path: /vol/voll
State: Enabled
Status: Idle
Progress: Idle for 06:12:36
Type: Regular
Schedule: -
Efficiency Policy Name: inline-only
. . .
Compression: true
Inline Compression: true
Constituent Volume: false
Inline Dedupe: true
Data Compaction: false
Cross Volume Inline Deduplication: false
Cross Volume Background Deduplication: false

::> df -s -vserver svm1 -volume voll
Filesystem      used      total-saved    %total-saved    deduplicated    %
deduplicated    compressed    %compressed
/vol/voll/      29524919032  14762459516    50%             14762459516    50%    0    0%
```

You are troubleshooting high CPU use on a FAS8200 with all SAS HDDs. You have SAN hosts with LUNs in a volume named voll. You want to reduce CPU use and maintain storage efficiencies. Referring to the exhibit which three actions will accomplish this task? (Choose three.)

- A. Disable compression.
- B. Enable cross-volume deduplication.
- C. Disable inline deduplication.
- D. Enable post process deduplication.
- E. Enable data compaction.

Correct Answer: CDE

QUESTION 12

Which formula is appropriate for calculating target port Queue Depth?

- A. The number of LIFs using a physical port * 256
- B. The sum of the Queue Depth setting for all hosts using a physical port

- C. The number of LIFs using the physical port * Maximum Host HBA Queue Depth setting
- D. The number of physical ports * 2048

Correct Answer: C

QUESTION 13

A customer's NetApp infrastructure is reaching end-of-life (EOL), and they want to inventory their NetApp cluster. The customer wants to make sure that the proposed technical refresh satisfies their growing data demands. Which two tools would you use to help with this recommendation? (Choose two.)

- A. Upgrade Advisor
- B. OneCollect
- C. Config Advisor
- D. Active IQ

Correct Answer: AC

QUESTION 14

What is a SAN best practice when initially configuring a Linux FC boot LUN?

- A. Install the Host Utilities in the guest Linux OS.
- B. Map the WWPN of the target.
- C. Disable the HBA port with the host's BIOS.
- D. Configure multipath to the LUN.

Correct Answer: B

Reference: https://library.netapp.com/ecm/ecm_download_file/ECMP1217221

QUESTION 15

Which configuration for primary block (FC and iSCSI) data does NetApp best practices recommend? (Choose two.)

- A. single controller single shelf
- B. single controller multiple shelves
- C. dual controller single shelf
- D. dual controller multiple shelves

Correct Answer: CD

[NS0-520 VCE Dumps](#)

[NS0-520 Study Guide](#)

[NS0-520 Exam Questions](#)