

NSE4_FGT-6.2^{Q&As}

Fortinet NSE 4 - FortiOS 6.2

Pass Fortinet NSE4_FGT-6.2 Exam with 100% Guarantee

Free Download Real Questions & Answers **PDF** and **VCE** file from:

https://www.pass2lead.com/nse4_fgt-6-2.html

100% Passing Guarantee
100% Money Back Assurance

Following Questions and Answers are all new published by Fortinet
Official Exam Center

- ⚙️ **Instant Download** After Purchase
- ⚙️ **100% Money Back** Guarantee
- ⚙️ **365 Days** Free Update
- ⚙️ **800,000+** Satisfied Customers



QUESTION 1

What information is flushed when the chunk-size value is changed in the config dlp settings?

- A. The database for DLP document fingerprinting
- B. The supported file types in the DLP filters
- C. The archived files and messages
- D. The file name patterns in the DLP filters

Correct Answer: A

QUESTION 2

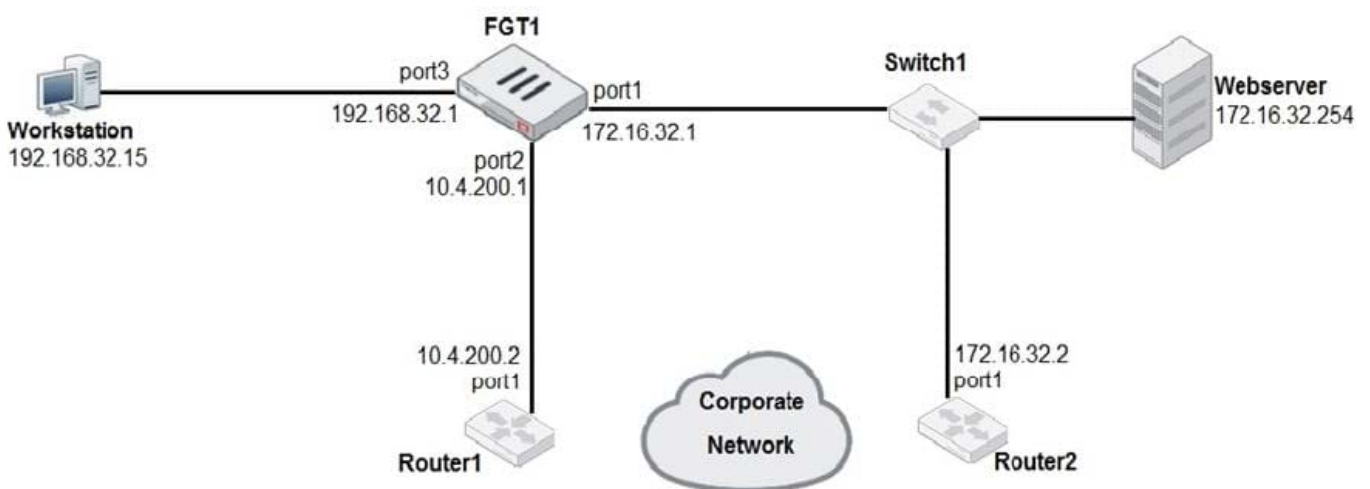
HTTP Public Key Pinning (HPKP) can be an obstacle to implementing full SSL inspection. What solutions could resolve this problem? (Choose two.)

- A. Enable Allow Invalid SSL Certificates for the relevant security profile.
- B. Change web browsers to one that does not support HPKP.
- C. Exempt those web sites that use HPKP from full SSL inspection.
- D. Install the CA certificate (that is required to verify the web server certificate) stores of users\' computers.

Correct Answer: BC

QUESTION 3

Examine the network diagram shown in the exhibit, then answer the following question:



Which one of the following routes is the best candidate route for FGT1 to route traffic from the Workstation to the Web

server?

- A. 172.16.0.0/16 [50/0] via 10.4.200.2, port2 [5/0]
- B. 0.0.0.0/0 [20/0] via 10.4.200.2, port2
- C. 10.4.200.0/30 is directly connected, port2
- D. 172.16.32.0/24 is directly connected, port1

Correct Answer: D

QUESTION 4

Which of the following statements are best practices for troubleshooting FSSO? (Choose two.)

- A. Include the group of guest users in a policy.
- B. Extend timeout timers.
- C. Guarantee at least 34 Kbps bandwidth between FortiGate and domain controllers.
- D. Ensure all firewalls allow the FSSO required ports.

Correct Answer: AD

QUESTION 5

Which statements about antivirus scanning mode are true? (Choose two.)

- A. In proxy-based inspection mode antivirus buffers the whole file for scanning before sending it to the client.
- B. In flow-based inspection mode, you can use the CLI to configure antivirus profiles to use protocol option profiles.
- C. In proxy-based inspection mode, if a virus is detected, a replacement message may not be displayed immediately.
- D. In quick scan mode, you can configure antivirus profiles to use any of the available signature data bases.

Correct Answer: AB

QUESTION 6

What FortiGate components are tested during the hardware test? (Choose three.)

- A. Administrative access
- B. HA heartbeat
- C. CPU
- D. Hard disk

E. Network interfaces

Correct Answer: CDE

QUESTION 7

Which of the following services can be inspected by the DLP profile? (Choose three.)

- A. NFS
- B. FTP
- C. IMAP
- D. CIFS
- E. HTTP-POST

Correct Answer: BCE

QUESTION 8

An administrator is configuring an antivirus profiles on FortiGate and notices that Proxy Options is not listed under Security Profiles on the GUI. What can cause this issue?

- A. FortiGate needs to be switched to NGFW mode.
- B. Proxy options section is hidden by default and needs to be enabled from the Feature Visibility menu.
- C. Proxy options are no longer available starting in FortiOS 5.6.
- D. FortiGate is in flow-based inspection mode.

Correct Answer: D

QUESTION 9

Which two statements about antivirus scanning mode are true? (Choose two.)

- A. In proxy-based inspection mode, antivirus buffers the whole file for scanning, before sending it to the client.
- B. In full scan flow-based inspection mode, FortiGate buffers the file, but also simultaneously transmits it to the client.
- C. In proxy-based inspection mode, files bigger than the buffer size are scanned.
- D. In quick scan mode, you can configure antivirus profiles to use any of the available antivirus signature databases.

Correct Answer: AB

QUESTION 10

During the digital verification process, comparing the original and fresh hash results satisfies which security requirement?

- A. Authentication.
- B. Data integrity.
- C. Non-repudiation.
- D. Signature verification.

Correct Answer: D

QUESTION 11

Which statements about a One-to-One IP pool are true? (Choose two.)

- A. It is used for destination NAT.
- B. It allows the fixed mapping of an internal address range to an external address range.
- C. It does not use port address translation.
- D. It allows the configuration of ARP replies.

Correct Answer: CD

QUESTION 12

An administrator is attempting to allow access to <https://fortinet.com> through a firewall policy that is configured with a web filter and an SSL inspection profile configured for deep inspection. Which of the following are possible actions to eliminate the certificate error generated by deep inspection? (Choose two.)

- A. Implement firewall authentication for all users that need access to fortinet.com.
- B. Manually install the FortiGate deep inspection certificate as a trusted CA.
- C. Configure fortinet.com access to bypass the IPS engine.
- D. Configure an SSL-inspection exemption for fortinet.com.

Correct Answer: AD

QUESTION 13

Which configuration objects can be selected for the Source field of a firewall policy? (Choose two.)

- A. Firewall service

- B. User or user group
- C. IP Pool
- D. FQDN address

Correct Answer: BC

QUESTION 14

Which two actions are valid for a FortiGuard category-based filter, in a web filter profile, for a firewall policy in proxy-based inspection mode? (Choose two.)

- A. Learn
- B. Exempt
- C. Allow
- D. Warning

Correct Answer: BC

QUESTION 15

Refer to the following exhibit.

Edit AntiVirus Profile

Name

Comments 29/255

Detect Viruses Block Monitor

Inspected Protocols

HTTP

SMTP

POP3

IMAP

MAPI

FTP

APT Protection Options

Content Disarm and Reconstruction

Treat Windows Executables in Email Attachments as Viruses

Use Virus Outbreak Prevention Database ⓘ

Name

Comments 21/255

Log Oversized Files

RPC over HTTP

Protocol Port Mapping

HTTP	<input checked="" type="checkbox"/>	Any	Specify	<input type="text" value="80"/>
SMTP	<input checked="" type="checkbox"/>	Any	Specify	<input type="text" value="25"/>
POP3	<input checked="" type="checkbox"/>	Any	Specify	<input type="text" value="110"/>
IMAP	<input checked="" type="checkbox"/>	Any	Specify	<input type="text" value="143"/>
FTP	<input checked="" type="checkbox"/>	Any	Specify	<input type="text" value="21"/>
NNTP	<input checked="" type="checkbox"/>	Any	Specify	<input type="text" value="119"/>
MAPI	<input checked="" type="checkbox"/>			<input type="text" value="135"/>
DNS	<input checked="" type="checkbox"/>			<input type="text" value="53"/>

Common Options

Comfort Clients

Block Oversized File/Email

Web Options

Chunked Bypass

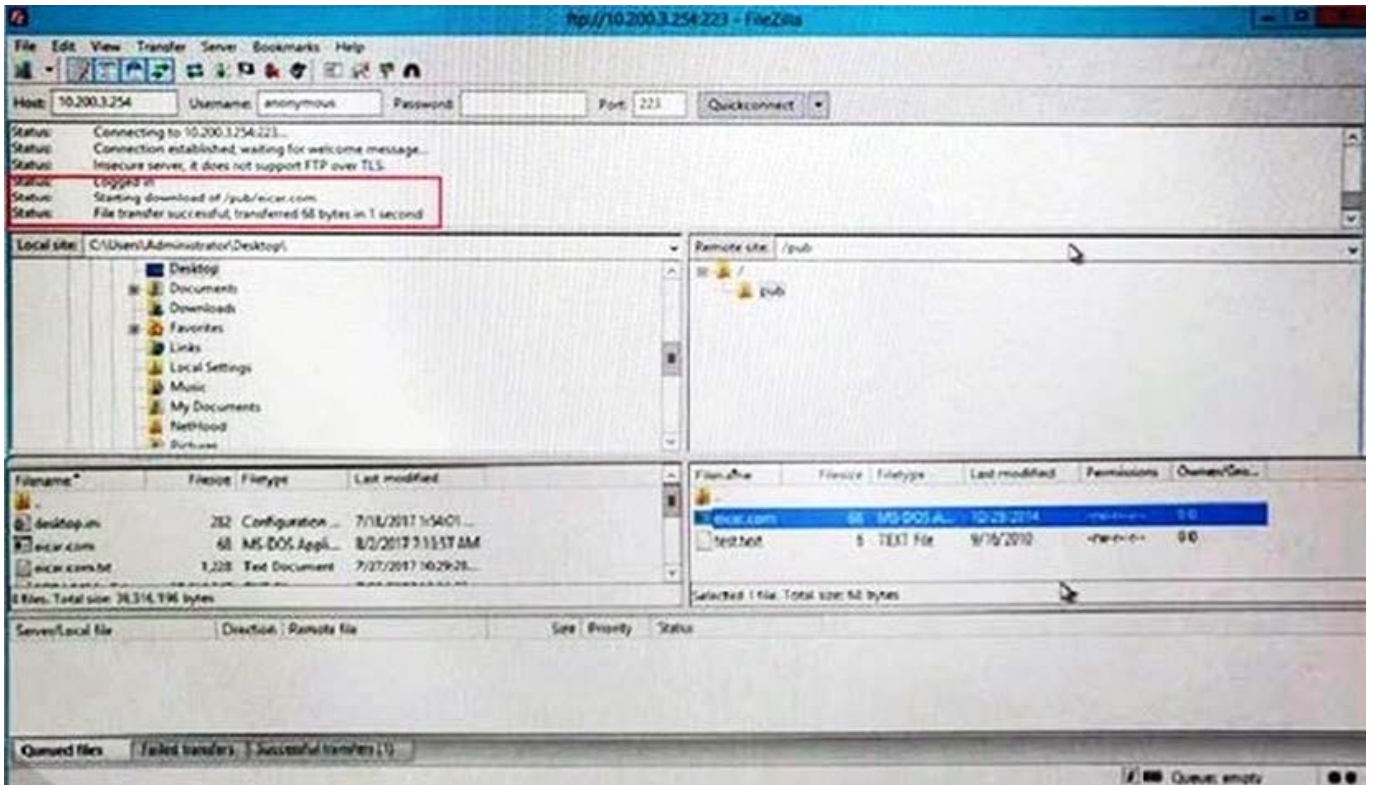
Add Fortinet Bar

HTTP Policy Redirect

Email Options

Allow Fragmented Messages

Append Signature (SMTP)



Why is FortiGate not blocking the test file over FTP download?

- A. Deep-inspection must be enabled for FortiGate to fully scan FTP traffic.
- B. FortiGate needs to be operating in flow-based inspection mode in order to scan FTP traffic.
- C. The FortiSandbox signature database is required to successfully scan FTP traffic.
- D. The proxy options profile needs to scan FTP traffic on a non-standard port.

Correct Answer: D

[Latest NSE4_FGT-6.2 Dumps](#)

[NSE4_FGT-6.2 Practice Test](#)

[NSE4_FGT-6.2 Study Guide](#)