

NSE5_FMG-6.2^{Q&As}

Fortinet NSE 5 - FortiManager 6.2





Pass Fortinet NSE5_FMG-6.2 Exam with 100% Guarantee

Free Download Real Questions & Answers **PDF** and **VCE** file from:

https://www.pass2lead.com/nse5_fmg-6-2.html

100% Passing Guarantee
100% Money Back Assurance

Following Questions and Answers are all new published by Fortinet
Official Exam Center

-  **Instant Download** After Purchase
-  **100% Money Back** Guarantee
-  **365 Days** Free Update
-  **800,000+** Satisfied Customers



QUESTION 1

Which of the following statements are true regarding SD-WAN Central Management? (Choose three.)

- A. SD-WAN must be enabled on per-ADOM basis
- B. SD-WAN settings can be installed on multiple FortiGate devices at the same time
- C. You can create multiple SD-WAN interfaces per VDOM
- D. When you configure an SD-WAN, you must specify at least two member interfaces.
- E. The first step in creating an SD-WAN using FortiManager is to create two SD-WAN firewall policies.

Correct Answer: ABD

QUESTION 2

Refer to the exhibit.

```
config system dm
set rollback-allow-reboot enable
end
```

An administrator has configured the command shown in the exhibit on FortiManager. A configuration change has been installed from FortiManager to the managed FortiGate that causes the FGFM tunnel to go down for more than 15 minutes.

What is the purpose of this command?

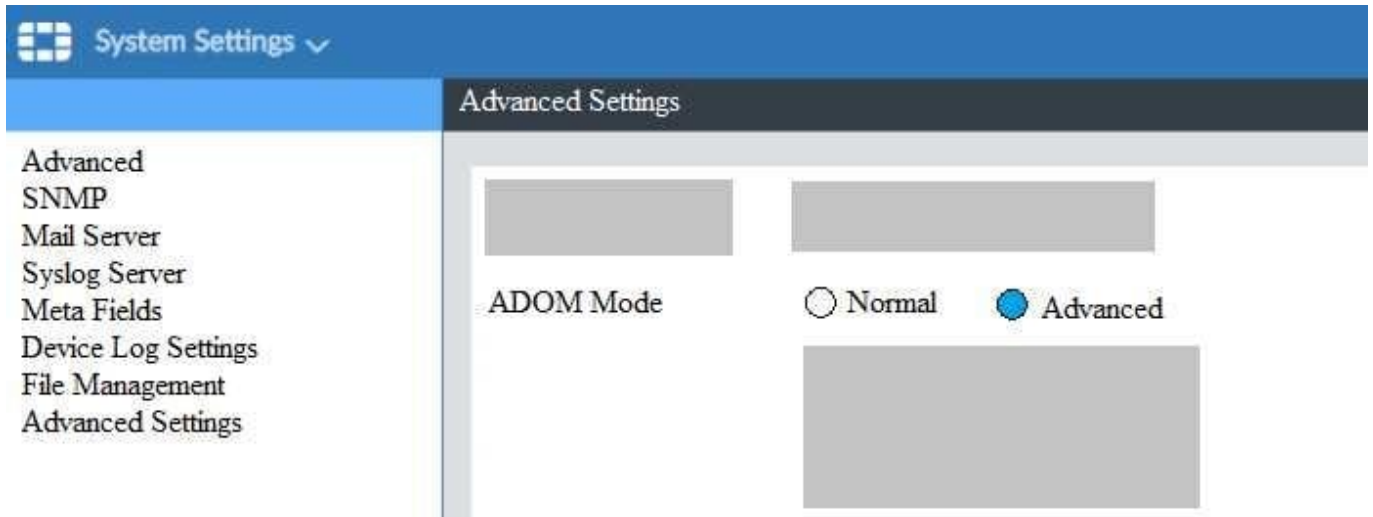
- A. It allows FortiGate to unset central management settings.
- B. It allows FortiGate to reboot and recover the previous configuration from its configuration file.
- C. It allows the FortiManager to revert and install a previous configuration revision on the managed FortiGate.
- D. It allows FortiGate to reboot and restore a previously working firmware image.

Correct Answer: B

Reference: <https://docs.fortinet.com/document/fortimanager/6.2.0/fortigate-fortimanagercommunicationsprotocol-guide/141304/fgfm-recovery-logic>

QUESTION 3

View the following exhibit.



Based on the configuration setting, which one of the following statements is true?

- A. The setting allows automatic updates to the policy package configuration for a managed device
- B. The setting enables the ADOMs feature on FortiManager
- C. This setting allows you to assign different VDOMs from the same FortiGate to different ADOMs.
- D. The setting disables concurrent ADOM access and adds ADOM locking

Correct Answer: C

QUESTION 4

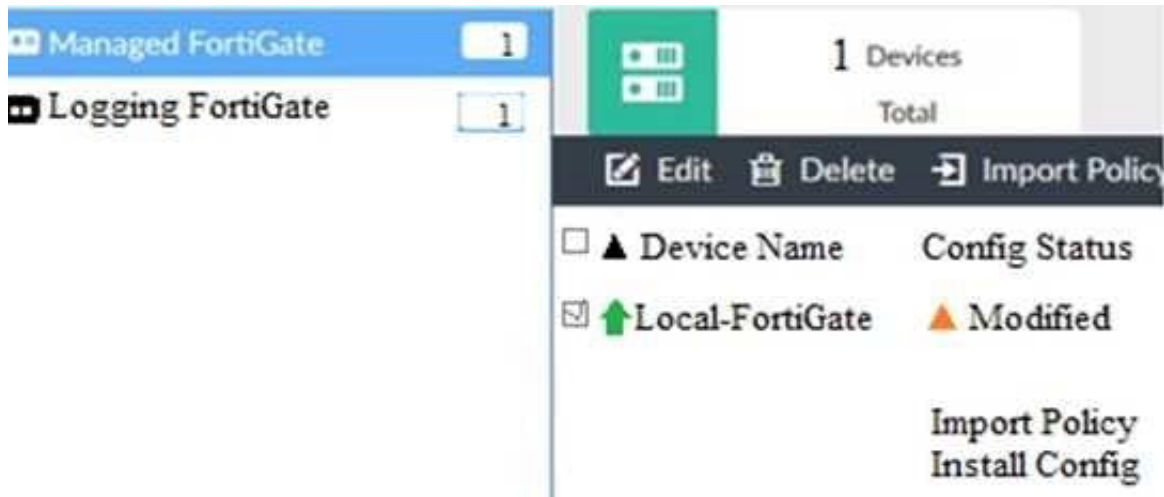
An administrator would like to create an SD-WAN using central management. What steps does the administrator need to perform to create an SD-WAN using central management?

- A. First create an SD-WAN firewall policy, add member interfaces to the SD-WAN template and create a static route
- B. You must specify a gateway address when you create a default static route
- C. Remove all the interface references such as routes or policies
- D. Enable SD-WAN central management in the ADOM, add member interfaces, create a static route and SDWAN firewall policies.

Correct Answer: D

QUESTION 5

View the following exhibit.



When using Install Config option to install configuration changes to managed FortiGate, which of the following statements are true? (Choose two.)

- A. Once initiated, the install process cannot be canceled and changes will be installed on the managed device
- B. Will not create new revision in the revision history
- C. Installs device-level changes to FortiGate without launching the Install Wizard
- D. Provides the option to preview configuration changes prior to installing them

Correct Answer: AC

QUESTION 6

Refer to the exhibits. Exhibit one.

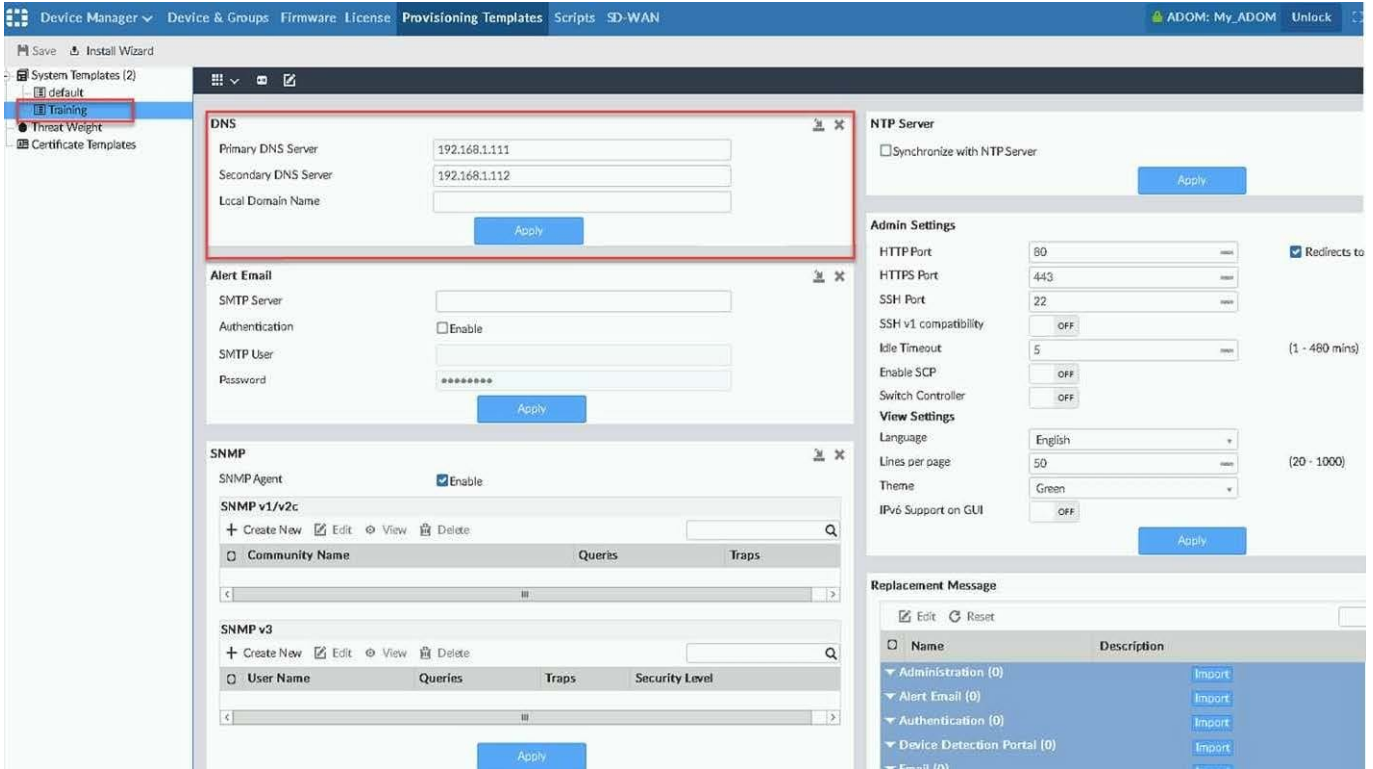
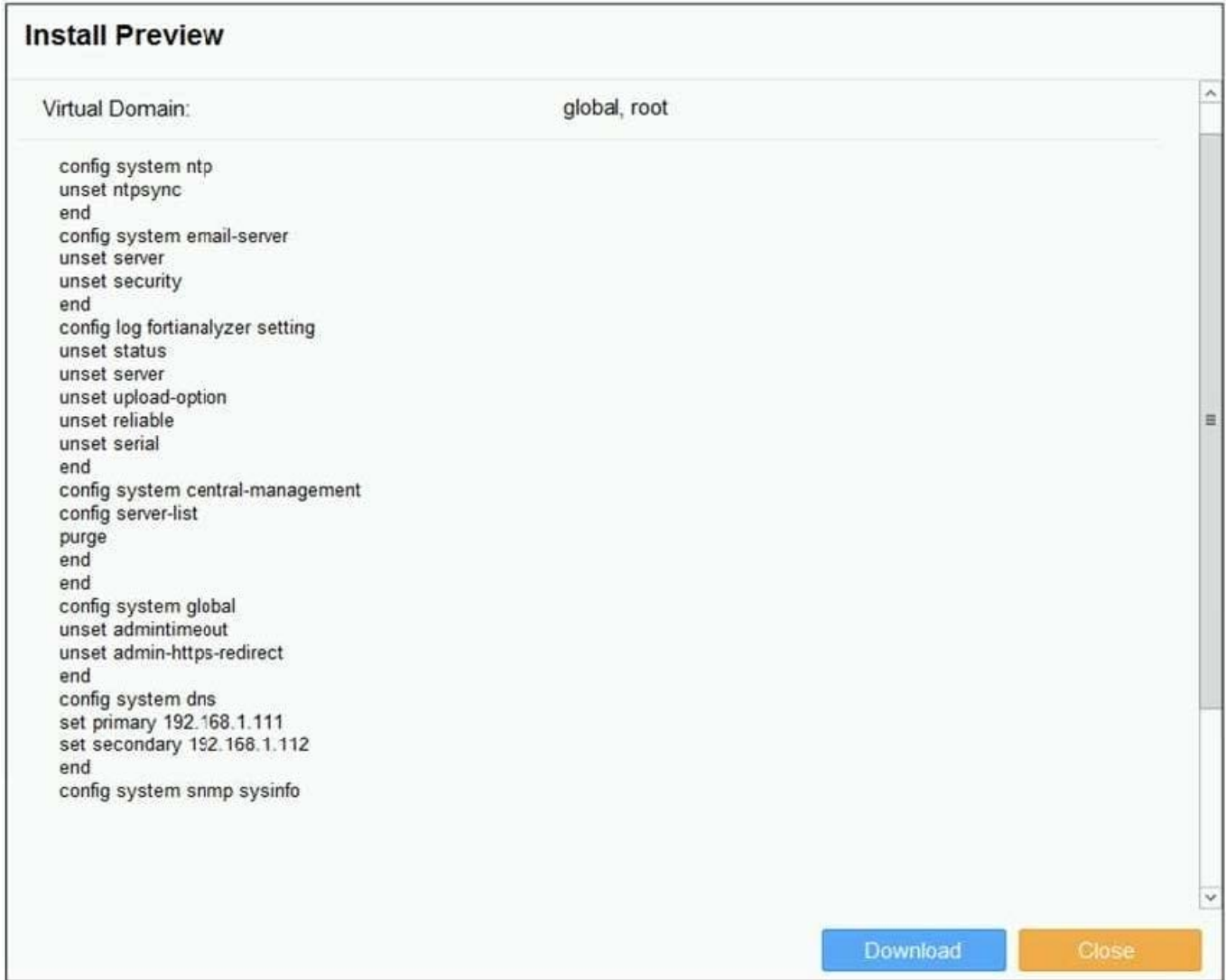


Exhibit two.



An administrator created a new system template named Training with two new DNS addresses on FortiManager. During the installation preview stage, the administrator notices that many unset commands need to be pushed.

What can be the main reason for these unset commands?

- A. The DNS addresses in the default system settings are the same as the Training system template
- B. The Training system template has other default settings
- C. The ADOM is locked by another administrator
- D. The Training system template does not have assigned devices

Correct Answer: B

QUESTION 7

What is the purpose of the Policy Check feature on FortiManager?

- A. To find and provide recommendation to combine multiple separate policy packages into one common policy package
- B. To find and merge duplicate policies in the policy package
- C. To find and provide recommendation for optimizing policies in a policy package
- D. To find and delete disabled firewall policies in the policy package

Correct Answer: C

QUESTION 8

What does a policy package status of Modified indicate?

- A. FortiManager is unable to determine the policy package status
- B. The policy package was never imported after a device was registered on FortiManager
- C. Policy configuration has been changed on a managed device and changes have not yet been imported into FortiManager
- D. Policy package configuration has been changed on FortiManager and changes have not yet been installed on the managed device.

Correct Answer: D

QUESTION 9

Refer to the following exhibit:

```
config system global
set workspace-mode normal
end
```

Which of the following statements are true based on this configuration? (Choose two.)

- A. The same administrator can lock more than one ADOM at the same time
- B. Ungraceful closed sessions will keep the ADOM in a locked state until the administrator session times out
- C. Unlocking an ADOM will submit configuration changes automatically to the approval administrator
- D. Unlocking an ADOM will install configuration automatically on managed devices

Correct Answer: AB

QUESTION 10

As a result of enabling FortiAnalyzer features on FortiManager, which of the following statements is true?

- A. FortiManager will reboot
- B. FortiManager will send the logging configuration to the managed devices so the managed devices will start sending logs to FortiManager
- C. FortiManager will enable ADOMs automatically to collect logs from non-FortiGate devices
- D. FortiManager can be used only as a logging device.

Correct Answer: A

[NSE5_FMG-6.2 PDF Dumps](#)

[NSE5_FMG-6.2 VCE Dumps](#)

[NSE5_FMG-6.2 Study Guide](#)