

PCNSA^{Q&As}

Palo Alto Networks Certified Network Security Administrator (PAN-OS 10.0)

Pass Palo Alto Networks PCNSA Exam with 100% Guarantee

Free Download Real Questions & Answers **PDF** and **VCE** file from:

<https://www.pass2lead.com/pcnsa.html>

100% Passing Guarantee
100% Money Back Assurance

Following Questions and Answers are all new published by Palo Alto Networks Official Exam Center

- ⚙️ **Instant Download** After Purchase
- ⚙️ **100% Money Back** Guarantee
- ⚙️ **365 Days** Free Update
- ⚙️ **800,000+** Satisfied Customers



QUESTION 1

An administrator creates a new Security policy rule to allow DNS traffic from the LAN to the DMZ zones. The administrator does not change the rule type from its default value. What type of Security policy rule is created?

- A. Intrazone
- B. Interzone
- C. Universal
- D. Tagged

Correct Answer: C

QUESTION 2

The CFO found a USB drive in the parking lot and decide to plug it into their corporate laptop. The USB drive had malware on it that loaded onto their computer and then contacted a known command and control (CnC) server, which ordered the infected machine to begin Exfiltrating data from the laptop.

Which security profile feature could have been used to prevent the communication with the CnC server?

- A. Create an anti-spyware profile and enable DNS Sinkhole
- B. Create an antivirus profile and enable DNS Sinkhole
- C. Create a URL filtering profile and block the DNS Sinkhole category
- D. Create a security policy and enable DNS Sinkhole

Correct Answer: A

QUESTION 3

Assume a custom URL Category Object of "NO-FILES" has been created to identify a specific website.

How can file uploading/downloading be restricted for the website while permitting general browsing access to that website?

- A. Create a Security policy with a URL Filtering profile that references the site access setting of continue to NO-FILES
- B. Create a Security policy with a URL Filtering profile that references the site access setting of block to NO-FILES
- C. Create a Security policy that references NO-FILES as a URL Category qualifier, with an appropriate Data Filtering profile
- D. Create a Security policy that references NO-FILES as a URL Category qualifier, with an appropriate File Blocking profile

Correct Answer: B

QUESTION 4

By default, which action is assigned to the intrazone-default rule?

- A. Reset-client
- B. Reset-server
- C. Deny
- D. Allow

Correct Answer: D

QUESTION 5

Which statement is true regarding NAT rules?

- A. Static NAT rules have precedence over other forms of NAT.
- B. Translation of the IP address and port occurs before security processing.
- C. NAT rules are processed in order from top to bottom.
- D. Firewall supports NAT on Layer 3 interfaces only.

Correct Answer: C

<https://docs.paloaltonetworks.com/pan-os/9-1/pan-os-admin/networking/nat/nat-policy-rules/nat-policy-overview>

QUESTION 6

Which action results in the firewall blocking network traffic with out notifying the sender?

- A. Drop
- B. Deny
- C. Reset Server
- D. Reset Client

Correct Answer: B

QUESTION 7

Prior to a maintenance-window activity, the administrator would like to make a backup of only the running configuration to an external location. What command in Device > Setup > Operations would provide the most operationally efficient way to achieve this outcome?

- A. save named configuration snapshot
- B. export device state
- C. export named configuration snapshot
- D. save candidate config

Correct Answer: A

Export Named Configuration Snapshot This option exports the current running configuration, a candidate configuration snapshot, or a previously imported configuration (candidate or running). The firewall exports the configuration as an XML file with the specified name. You can save the snapshot in any network location. These exports often are used as backups. These XML files also can be used as templates for building other firewall configurations.

QUESTION 8

How is an address object of type IP range correctly defined?

- A. 192.168.40.1-192.168.40.255
- B. 192.168.40.1-255
- C. 192.168.40.1, 192.168.40.255
- D. 192.168.40.1/24

Correct Answer: A

QUESTION 9

Which interface type requires no routing or switching but applies Security or NAT policy rules before passing allowed traffic?

- A. Layer 3
- B. Virtual Wire
- C. Tap
- D. Layer 2

Correct Answer: A

Reference: <https://docs.paloaltonetworks.com/pan-os/9-1/pan-os-admin/networking/nat/nat-policy-rules/nat-policy-overview>

QUESTION 10

DNS exceptions can be set under which Security profile?

- A. Data Filtering
- B. URL Filtering
- C. Anti-Spyware
- D. Antivirus

Correct Answer: C

QUESTION 11

After making multiple changes to the candidate configuration of a firewall, the administrator would like to start over with a candidate configuration that matches the running configuration. Which command in Device > Setup > Operations would provide the most operationally efficient way to accomplish this?

- A. Import named config snapshot
- B. Load named configuration snapshot
- C. Revert to running configuration
- D. Revert to last saved configuration

Correct Answer: C

QUESTION 12

Which Security profile generates an alert based on a threshold when the action is set to Alert?

- A. Vulnerability Protection
- B. Antivirus
- C. DoS protection
- D. Anti-Spyware

Correct Answer: A

Reference: <https://docs.paloaltonetworks.com/network-security/security-policy/security-profiles/security-profile-vulnerability-protection#:~:text=Typically%20the%20default%20action%20is,the%20threat%20or%20Antivirus%20signature.andtext=action%20does%20not%20generate%20logs%20related%20to%20the%20signatures%20or%20profiles>

QUESTION 13

For the firewall to use Active Directory to authenticate users, which Server Profile is required in the Authentication

Profile?

- A. TACACS+
- B. RADIUS
- C. LDAP
- D. SAML

Correct Answer: C

Reference:

<https://docs.paloaltonetworks.com/pan-os/8-1/pan-os-admin/authentication/configure-an-authenticationprofile-and-sequence>

QUESTION 14

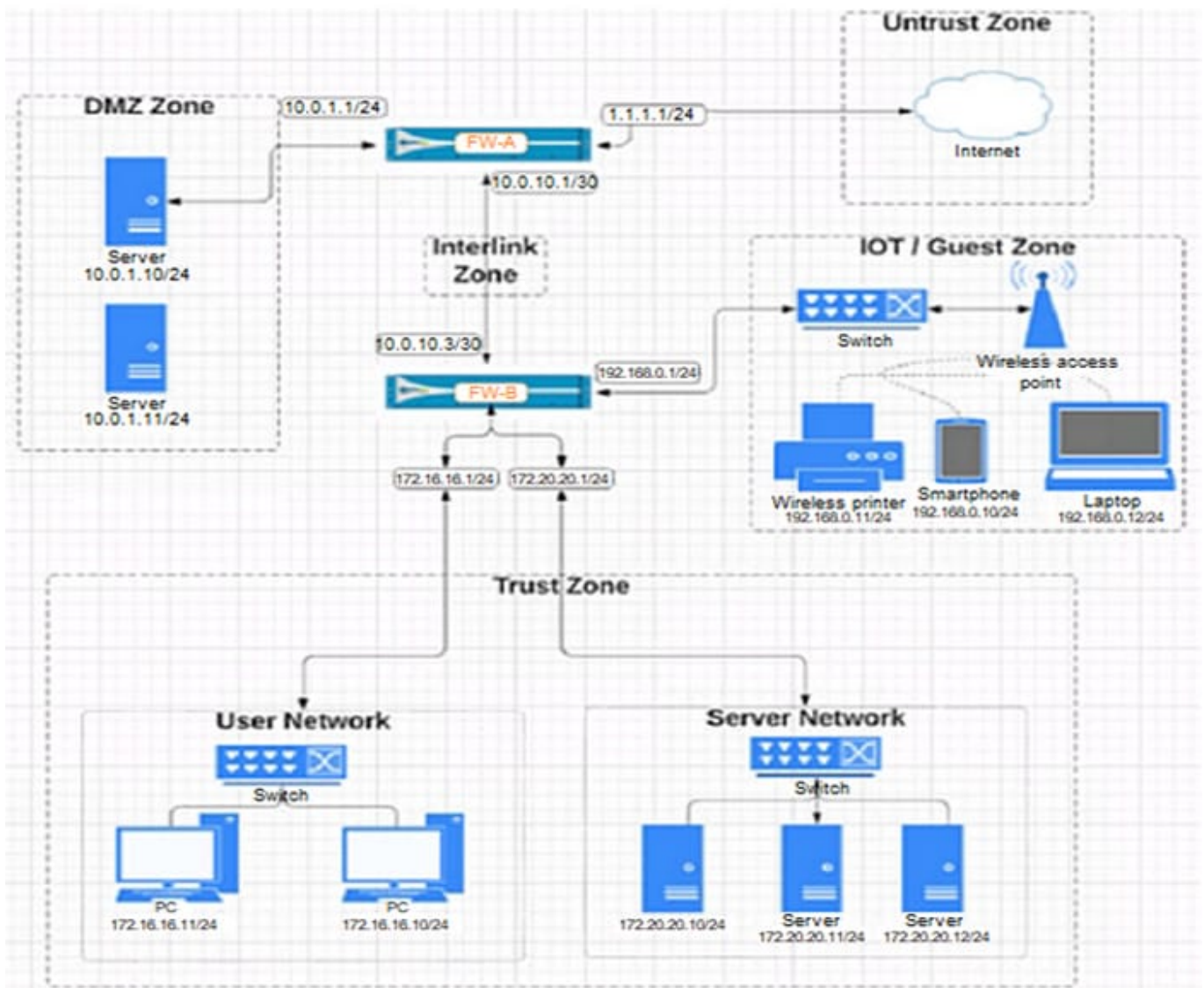
An administrator needs to add capability to perform real-time signature lookups to block or sinkhole all known malware domains. Which type of single unified engine will get this result?

- A. User-ID
- B. App-ID
- C. Security Processing Engine
- D. Content-ID

Correct Answer: D

QUESTION 15

Given the network diagram, which two statements are true about traffic between the User and Server networks? (Choose two.)



- A. Traffic is permitted through the default Intrazone “allow” rule.
- B. Traffic restrictions are not possible because the networks are in the same zone.
- C. Traffic is permitted through the default Interzone “allow” rule.
- D. Traffic restrictions are possible by modifying Intrazone rules.

Correct Answer: AD

<https://knowledgebase.paloaltonetworks.com/KCSArticleDetail?id=kA10g000000CITHCA0&lang=es>

[Latest PCNSA Dumps](#)

[PCNSA VCE Dumps](#)

[PCNSA Practice Test](#)