

# PL-300<sup>Q&As</sup>

Microsoft Power BI Data Analyst

## Pass Microsoft PL-300 Exam with 100% Guarantee

Free Download Real Questions & Answers **PDF** and **VCE** file from:

<https://www.pass2lead.com/pl-300.html>

100% Passing Guarantee  
100% Money Back Assurance

Following Questions and Answers are all new published by Microsoft  
Official Exam Center

- ⚙️ **Instant Download** After Purchase
- ⚙️ **100% Money Back** Guarantee
- ⚙️ **365 Days** Free Update
- ⚙️ **800,000+** Satisfied Customers



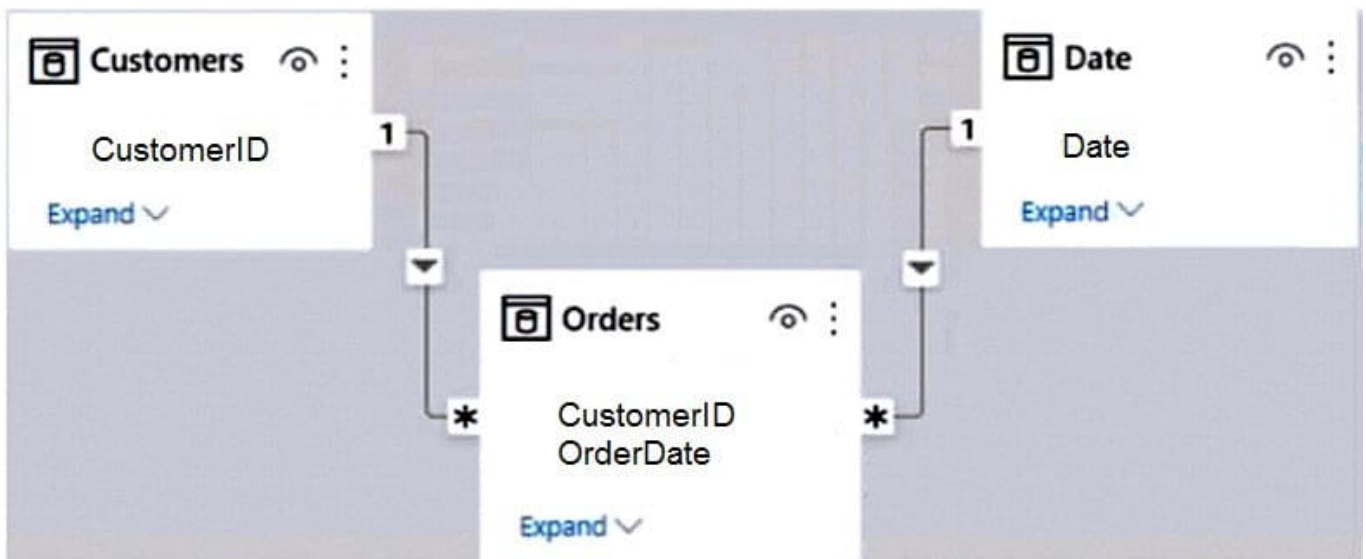
**QUESTION 1**

**HOTSPOT**

You have a Power BI report named Orders that supports the following analysis:

1.  
Total sales over time
2.  
The count of orders over time
3.  
New and repeat customer counts

The data model size is nearing the limit for a dataset in shared capacity. The model view for the dataset is shown in the following exhibit.



The data view for the Orders table is shown in the following exhibit.

OrderID	CustomerID	OrderDate	ProductID
10293	TORTU	8/29/1996 12:00:00 AM	18
10294	TORTU	8/29/1996 12:00:00 AM	63
10295	TORTU	8/29/1996 12:00:00 AM	75
10296	RATTC	8/29/1996 12:00:00 AM	1

UnitPrice	Quantity	Discount	SalesTotal
\$50	12	0	600
\$35.1	5	0	175.5
\$6.2	6	0	37.2
\$14.4	18	0	259.2

The Orders table relates to the Customers table by using the CustomerID column.

The Orders table relates to the Date table by using the OrderDate column.

For each of the following statements, select Yes if the statement is true, Otherwise, select No.

NOTE: Each correct selection is worth one point.

Hot Area:

**Answer Area**

**Statements**

**Yes No**

Summarizing Orders by the CustomerID, OrderID, and OrderDate columns will reduce the model size while still supporting the current analysis.

Removing the CustomerID column from Orders will reduce the model size while still supporting the current analysis.

Removing the UnitPrice and Discount columns from Orders will reduce the model size while still supporting the current analysis.

Correct Answer:

**Answer Area**

**Statements**

**Yes No**

Summarizing Orders by the CustomerID, OrderID, and OrderDate columns will reduce the model size while still supporting the current analysis.

Removing the CustomerID column from Orders will reduce the model size while still supporting the current analysis.

Removing the UnitPrice and Discount columns from Orders will reduce the model size while still supporting the current analysis.

**QUESTION 2**

You are using the key influencers visual to identify which factors affect the quantity of items sold in an order. You add the following fields to the Explain By field:

Customer Country Product Category Supplier Country Sales Employee Supplier Name Product Name Customer City

The key influencers visual returns the results shown in the following exhibit.

Key influencers Top segments

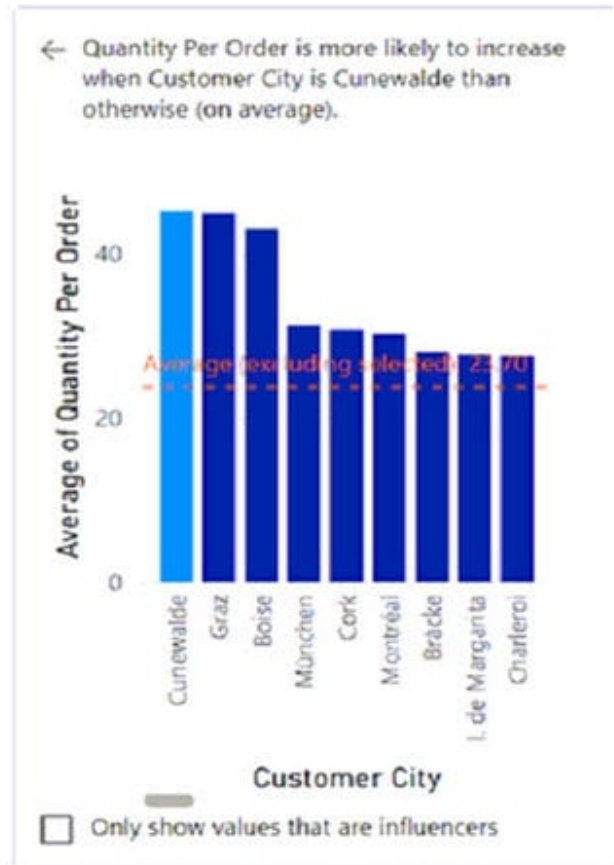
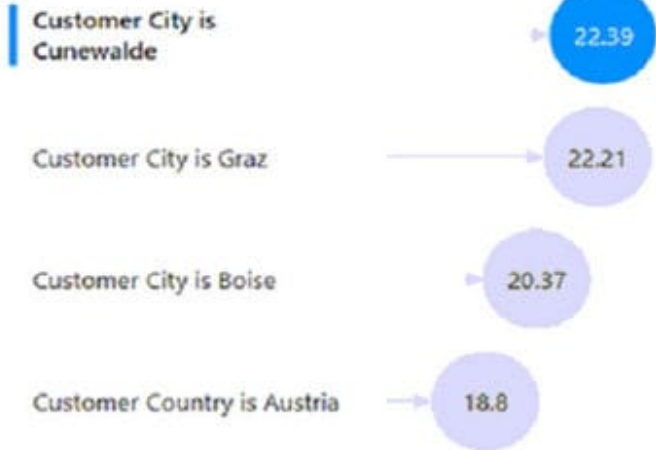


What influences Quantity Per Order to **Increase**



When...

...the average of Quantity Per Order increases by



What can you identify from the visual?

- A. Customers in Austria order 18.8 more units than the average order quantity.
- B. Customers in Boise order 20.37 percent more than the average order quantity.
- C. Product Category positively influences the quantity per order.
- D. Customers in Cork order lower quantities than average.

Correct Answer: A

Average quantity of units is displayed.

Incorrect:

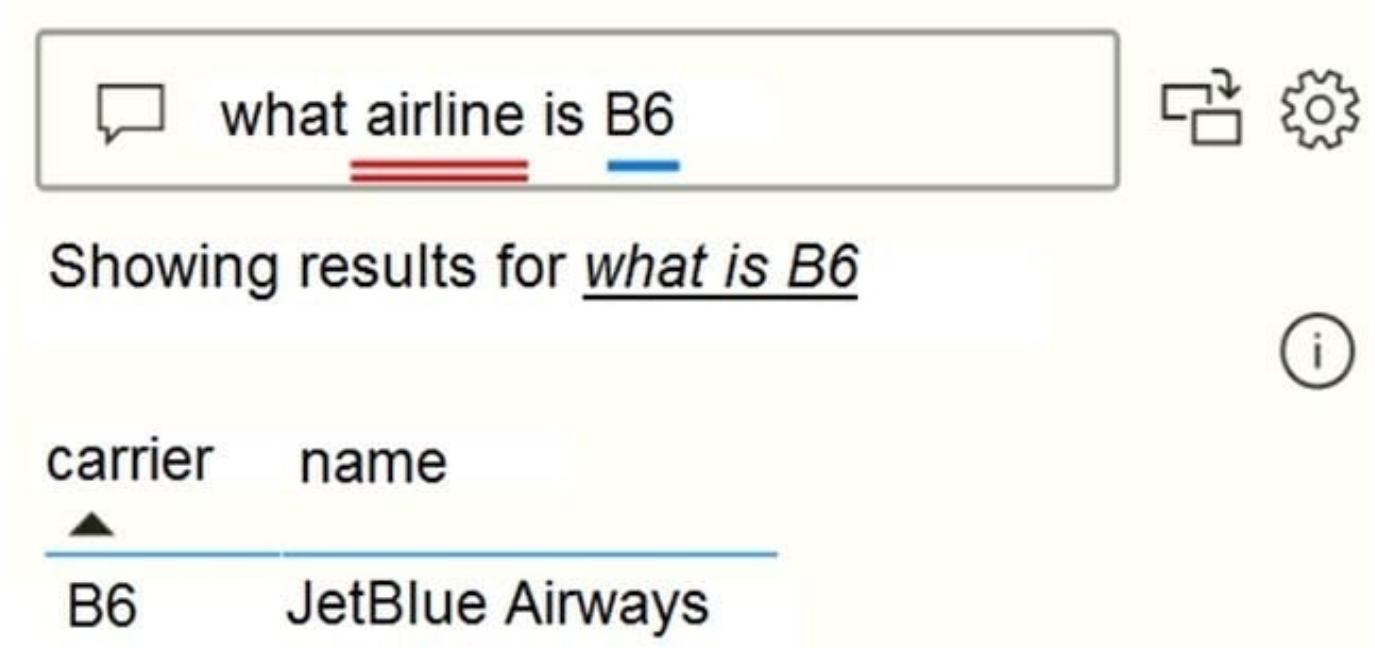
Not B: Average quantity of units is displayed, not percentage.

Reference:

<https://docs.microsoft.com/en-us/power-bi/visuals/power-bi-visualization-influencers>

**QUESTION 3**

You have a QandA visual that displays information from a table named Carriers as shown in the following exhibit.



You need to ensure that users can ask questions by using the term airline or carrier. The solution must minimize changes to the data model. What should you do?

- A. Add a duplicate query named Airline.
- B. Add airline as a synonym of carrier.
- C. Rename the carrier column as airline in the Carriers query.
- D. Rename the query from Carriers to airlines.

Correct Answer: B

Add synonyms to tables and columns: This step applies specifically to QandA (and not to Power BI reports in general). Users often have a variety of terms they use to refer to the same thing, such as total sales, net sales, total net sales. You can add these synonyms to tables and columns in the Power BI model.

This step can be important. Even with straightforward table and column names, users of QandA ask questions using the vocabulary that first comes to them. They're not choosing from a predefined list of columns. The more sensible synonyms you add, the better your users' experience is with your report.

Reference: <https://docs.microsoft.com/en-us/power-bi/natural-language/q-and-a-best-practices>

**QUESTION 4**

HOTSPOT

You have a column named UnitsInStock as shown in the following exhibit



The image shows the Power BI Desktop interface with two panes: Properties and Fields.

**Properties Pane (Left):**

- Formatting:**
  - Data type: Whole number
  - Format: Whole number
  - Percentage format: No
  - Thousands separator: Yes
  - Decimal places: 0
- Advanced:**
  - Sort by column: UnitsInStock (Default)
  - Data category: Uncategorized
  - Summarize by: None
  - Is nullable: Yes

**Fields Pane (Right):**

- Search: [Empty search box]
- Order Details
- Orders
- Products
  - CategoryID
  - Discontinued
  - ProductID
  - ProductName
  - QuantityPerUnit
  - ReorderLevel
  - SupplierID
  - UnitPrice
  - UnitsInStock** (highlighted)
  - UnitsOnOrder



UnitsInStock has 75 non-null values, of which 51 are unique.

Use the drop-down menus to select the answer choice that completes each statement based on the information presented in the graphic.

NOTE: Each correct selection is worth one point.

Hot Area:

**Answer Area**

When a table visual is created in a report and UnitsInStock is added to the values, there will be **[answer choice]** in the table.

0 rows
1 row
51 rows
75 rows

Changing the Summarize by setting of the UnitsInStock column, and then adding the column to a table visual, will **[answer choice]** the number of rows in the table visual.

maintain
reduce
increase

Correct Answer:

**Answer Area**

When a table visual is created in a report and UnitsInStock is added to the values, there will be **[answer choice]** in the table.

0 rows
1 row
51 rows
75 rows

Changing the Summarize by setting of the UnitsInStock column, and then adding the column to a table visual, will **[answer choice]** the number of rows in the table visual.

maintain
reduce
increase

Box 1: 75 rows

Is nullable allows NULL values in the column.

Box 2: reduce

Reference:

<https://blog.crossjoin.co.uk/2019/01/20/is-nullable-column-property-power-bi/>

**QUESTION 5**

You have multiple dashboards.

You need to ensure that when users browse the available dashboards from powerbi.com. they can see which dashboards contain Personally Identifiable Information (PII). The solution must minimize configuration effort and impact on the

dashboard design.

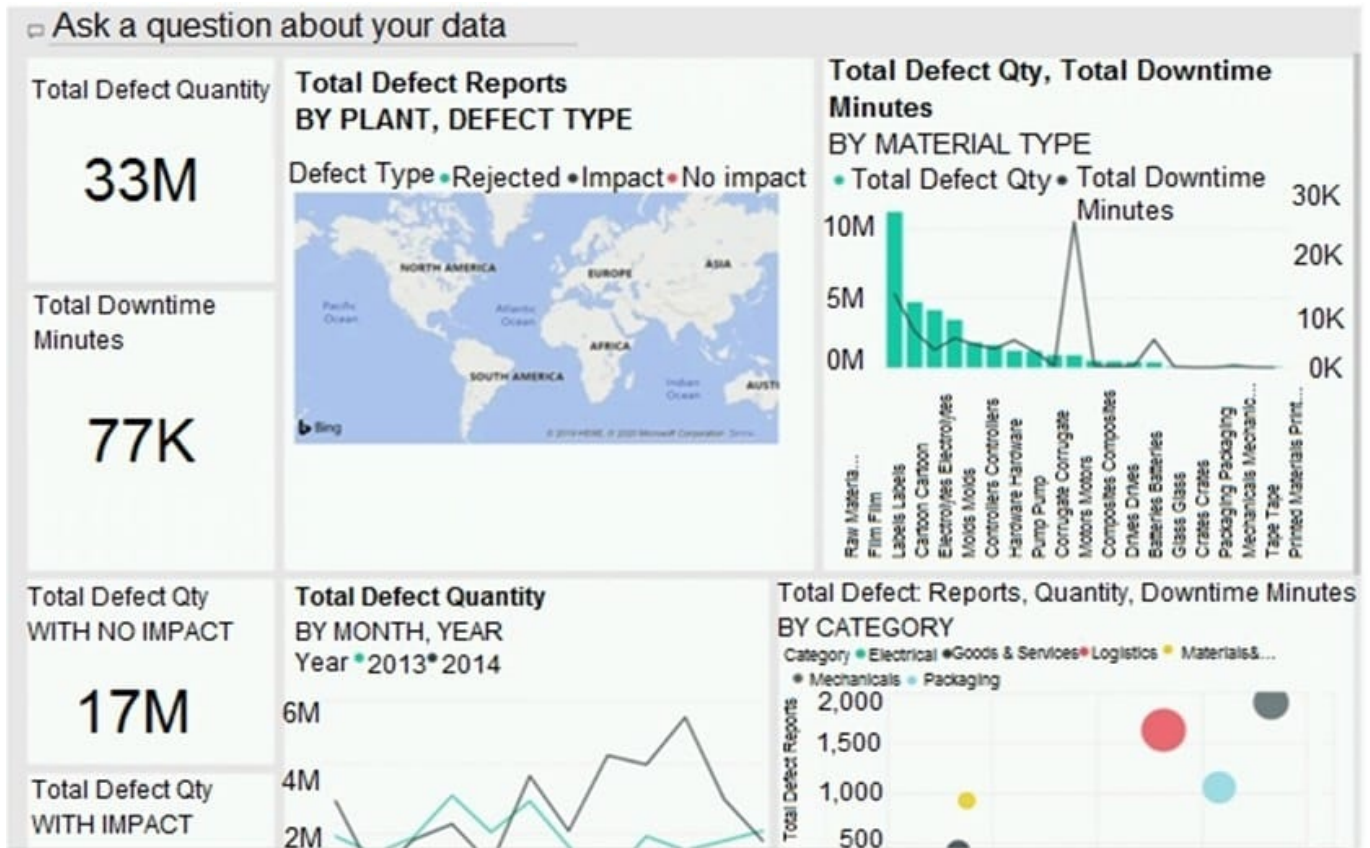
What should you use?

- A. Active Directory groups
- B. tiles
- C. data classifications
- D. comments

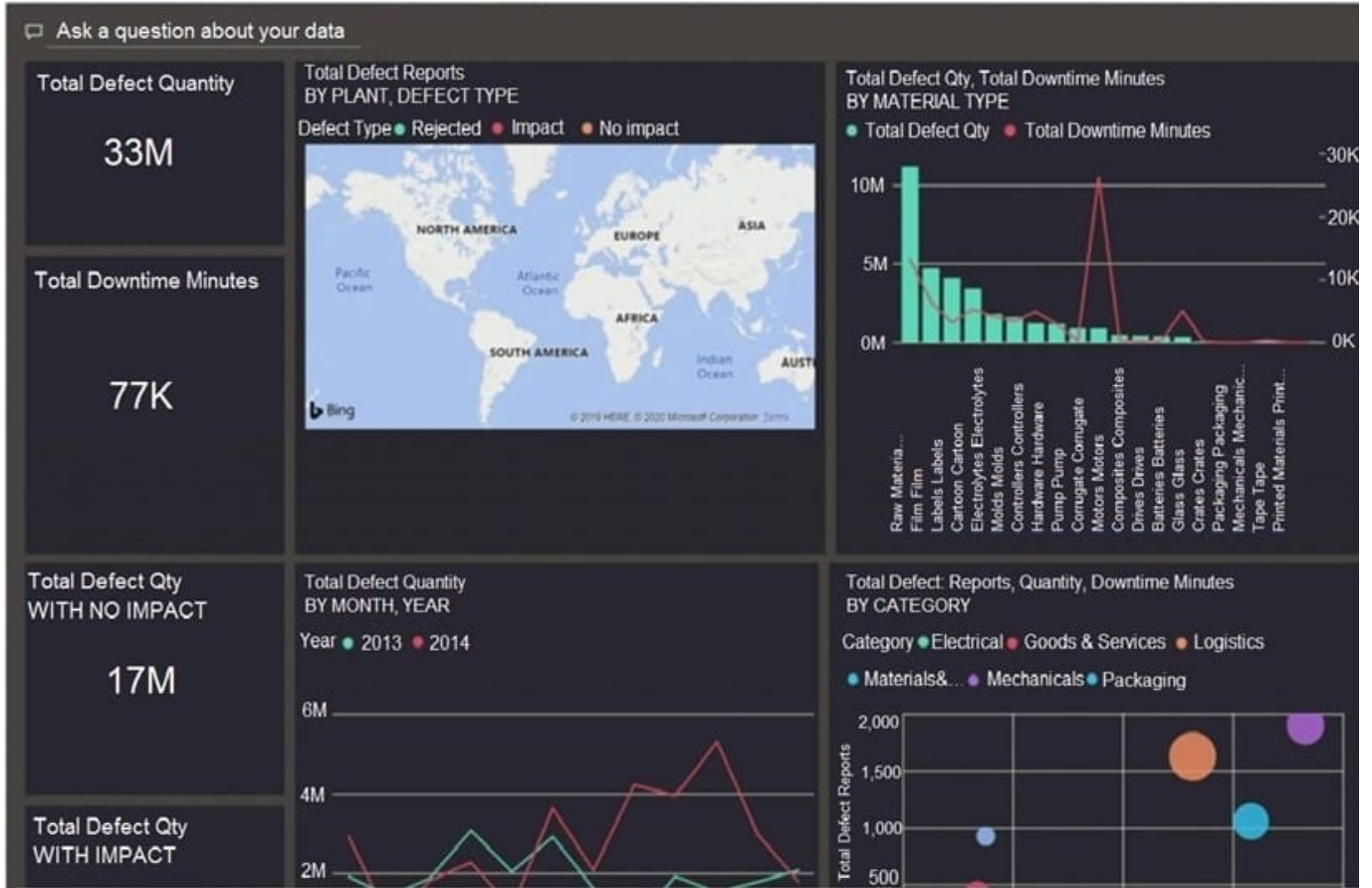
Correct Answer: A

**QUESTION 6**

You have a dashboard that contains tiles pinned from a single report as shown in the Original Dashboard exhibit. (Click the Original Dashboard tab.)



You need to modify the dashboard to appear as shown in the Modified Dashboard exhibit. (Click the Modified Dashboard tab.)



What should you do?

- A. Edit the details of each tile.
- B. Change the report theme.
- C. Change the dashboard theme.
- D. Create a custom CSS file.

Correct Answer: C

<https://docs.microsoft.com/en-us/power-bi/create-reports/service-dashboard-themes#how-dashboard-themes-work>

**QUESTION 7**

DRAG DROP

You have the Power BI data model shown in the following exhibit.



Select and Place:

**Table Filter DAX Expression**

[Country]= "USA"

[Email]= userprincipalname()

[Manager]= "CFO"

False()

True()

**Answer Area**

Human Resources: [DAX Expression]

Country: [DAX Expression]

Correct Answer:

**Table Filter DAX Expression**

[Country]= "USA"

[Email]= userprincipalname()

[Manager]= "CFO"

False()

True()

**Answer Area**

Human Resources: [Manager]= "CFO"

Country: True()

**QUESTION 8**

Your company plans to completely separate development and production assets such as datasets, reports, and dashboards in Microsoft Power BI. You need to recommend an application lifecycle strategy. The solution must minimize maintenance to update access and prevent end users from viewing the development assets.

What should you recommend?

- A. Create production reports in a separate workspace that uses a shared dataset from the development workspace. Grant the end users access to the production workspace.
- B. In the same workspace, create separate copies of the assets and append DEV to the names of the copied assets. Grant the end users access to the workspace.
- C. Create separate workspaces for development and production. Grant the end users access to the production workspace.
- D. Create one workspace for development. From the workspace, publish an app for production.

Correct Answer: C

Use different work stages (Development, Test, and Production).

Deploy from the Development workspace.

Reference:

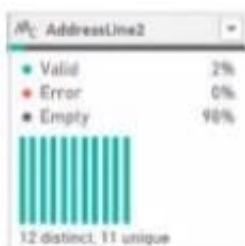
<https://visualbi.com/blogs/microsoft/powerbi/application-lifecycle-management-power-bi/>

**QUESTION 9**

**HOTSPOT**

You are profiling data by using Power Query Editor.

The AddressLine2 column in a table named Address is shown in the following exhibit.



Use the drop-down menus to select the answer choice that completes each statement based on the information presented in the graphic. NOTE: Each correct selection is worth one point.

Hot Area:



There are [answer choice] different values in the column including nulls.

2
11
12
23

Make one or more selections for the statement: There are [answer choice] different values in the column including nulls.

There are [answer choice] non-null values that occur only once in the column.

2
11
12
23

Correct Answer:

There are [answer choice] different values in the column including nulls.

2
11
12
23

Make one or more selections for the statement: There are [answer choice] different values in the column including nulls.

There are [answer choice] non-null values that occur only once in the column.

2
11
12
23

**QUESTION 10**

You plan to create a dashboard in the Power BI service that retrieves data from a Microsoft SQL Server database. The dashboard will be shared between the users in your organization.

You need to ensure that the users will see the current data when they view the dashboard.

How should you configure the connection to the data source?

- A. Deploy an on-premises data gateway (personal mode). Import the data by using the Import Data Connectivity mode.
- B. Deploy an on-premises data gateway. Import the data by using the Import Data Connectivity mode.

C. Deploy an on-premises data gateway. Import the data by using the DirectQuery Data Connectivity mode.

D. Deploy an on-premises data gateway (personal mode). Import the data by using the DirectQuery Data Connectivity mode.

Correct Answer: D

References: <https://docs.microsoft.com/en-us/power-bi/desktop-directquery-about#power-bi-connectivity-modes>

---

### QUESTION 11

You have a PBiX file that imports several tables from an Azure SQL database.

The data will be migrated to another Azure SQL database.

You need to change the connections in the PBIX file. The solution must minimize administrative effort.

What should you do?

- A. From Power Query Editor, modify the source of each query.
- B. Create a PBiT file, open the file, and change the data sources when prompted
- C. From Power Query Editor, create new queries.
- D. Modify the Data source settings.

Correct Answer: D

---

### QUESTION 12

#### HOTSPOT

You need to create a solution to meet the notification requirements of the warehouse shipping department.

What should you do? To answer, select the appropriate options in the answer area.

NOTE: Each correct select is worth one point:

Hot Area:

**Answer Area**

Populate a

report
bookmark
dashboard

by using a card visualization that shows the percentage of late

orders in the current month, and then configure a

data alert.
phone view.
subscription.

Correct Answer:

**Answer Area**

Populate a

report
bookmark
dashboard

by using a card visualization that shows the percentage of late

orders in the current month, and then configure a

data alert.
phone view.
subscription.

Box 1: dashboard

The warehouse shipping department must be notified if the percentage of late orders within the current month exceeds 5%.

You can set alerts to notify you when data in your dashboards changes beyond limits you set.

Box 2: data alert

Reference:

<https://docs.microsoft.com/en-us/power-bi/create-reports/service-set-data-alerts>

**QUESTION 13**

DRAG DROP

You create a data model in Power BI.

Report developers and users provide feedback that the data model is too complex.

The model contains the following tables.

Table name	Column name	Data type
Sales_Region	region_id	Integer
	name	Varchar
Region_Manager	region_id	Integer
	manager_id	Integer
Sales_Manager	sales_manager_id	Integer
	name	Varchar
	region_id	Integer
Manager	manager_id	Integer
	name	Varchar

The model has the following relationships:

\*There is a one-to-one relationship between Sales\_Region and Region\_Manager.

\*There are more records in Manager than in Region\_Manager, but every record in Region\_Manager has a corresponding record in Manager.

\*There are more records in Sales\_Manager than in Sales\_Region, but every record in Sales\_Region has a corresponding record in Sales\_Manager.

You need to denormalize the model into a single table. Only managers who are associated to a sales region must be included in the reports.

Which three actions should you perform in sequence? To answer, move the appropriate actions from the list of actions to the answer area and arrange them in the correct order.

NOTE: More than one order of answer choices is correct. You will receive credit for any of the correct orders you select.

Select and Place:

### Actions

Merge [Region\_Manager] and [Manager] by using an inner join.

Merge [Sales\_Manager] and [Sales\_Region] by using a left join.

Merge [Sales\_Region] and [Sales\_Manager] by using an inner join.

Merge [Sales\_Region] and [Sales\_Manager] by using an inner join as a new query named [Sales\_Region\_and\_Manager].

Merge [Sales\_Region] and [Region\_Manager] by using a right join as a new query named [Sales\_Region\_and\_Region\_Manager].

Merge [Sales\_Region] and [Region\_Manager] by using an inner join.

### Answer Area

Correct Answer:

### Actions

Merge [Region\_Manager] and [Manager] by using an inner join.

Merge [Sales\_Manager] and [Sales\_Region] by using a left join.

Merge [Sales\_Region] and [Sales\_Manager] by using an inner join.

Merge [Sales\_Region] and [Sales\_Manager] by using an inner join as a new query named [Sales\_Region\_and\_Manager].

Merge [Sales\_Region] and [Region\_Manager] by using a right join as a new query named [Sales\_Region\_and\_Region\_Manager].

Merge [Sales\_Region] and [Region\_Manager] by using an inner join.

### Answer Area

Merge [Region\_Manager] and [Manager] by using an inner join.

Merge [Sales\_Region] and [Sales\_Manager] by using an inner join.

Merge [Sales\_Region] and [Region\_Manager] by using an inner join.

1.Merge [Region\_Manager] and [Manager] by using an inner join. 3.Merge [Sales\_Region] and [Sales\_Manager] by using an inner join. 6.Merge [Sales\_Region] and [Region\_Manager] by using an inner join.

### QUESTION 14

For the sales department at your company, you publish a Power BI report that imports data from a Microsoft Excel Workbook located in a Microsoft SharePoint folder. The data model contains several measures. You need to create a Power BI report from the existing data. The solution must minimize development effort. Which type of data source should you



use?

- A. a SharePoint folder
- B. Power BI dataflows
- C. an Excel workbook
- D. Power BI dataset

Correct Answer: D

case states there is already a report published and the datamodel contains measures. therefore and to be able to use the measures in the datamodel you should connect to the existing dataset (which was created when you published the report) instead of starting from scratch with the files in the SharePoint folder.

---

### QUESTION 15

Note: This question is part of a series of questions that present the same scenario. Each question in the series contains a unique solution that might meet the stated goals. Some question sets might have more than one correct solution, while

others might not have a correct solution.

After you answer a question in this scenario, you will NOT be able to return to it. As a result, these questions will not appear in the review screen.

You have several reports and dashboards in a workspace.

You need to grant all organizational users read access to a dashboard and several reports.

Solution: You assign all the users the Viewer role to the workspace.

Does this meet the goal?

- A. Yes
- B. No

Correct Answer: B

"You have five reports and two dashboards in a workspace. You need to grant all organizational users read access to one dashboard and three reports"

[Latest PL-300 Dumps](#)

[PL-300 Practice Test](#)

[PL-300 Study Guide](#)